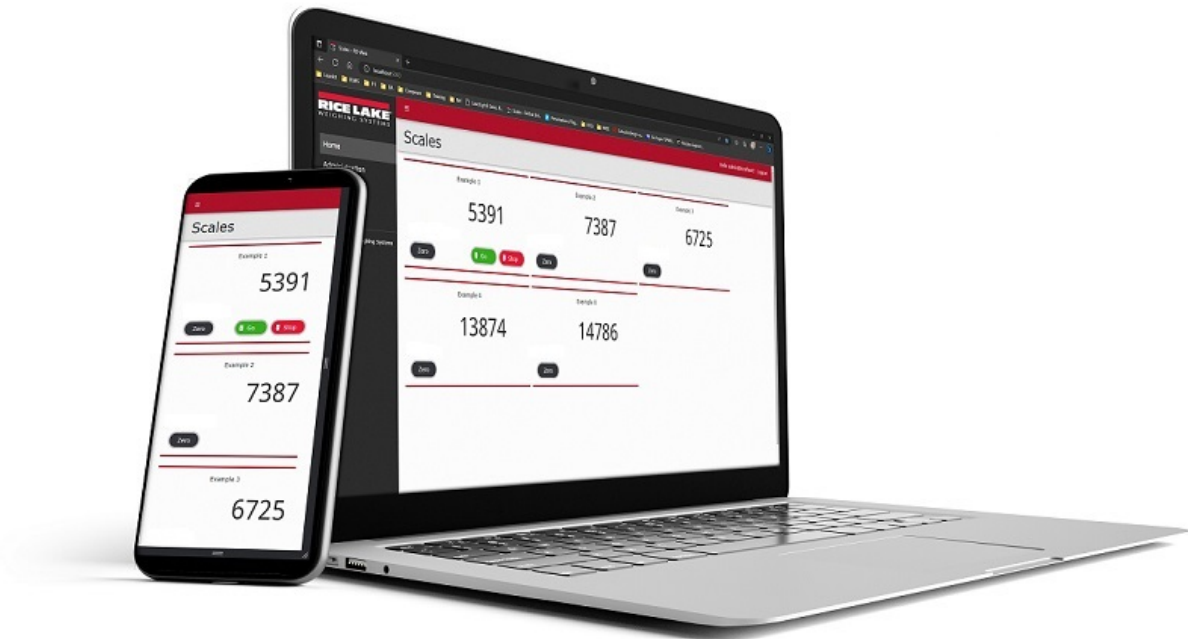


# RL Web Display

---

Software

## Operator Manual



© Rice Lake Weighing Systems. All rights reserved.

Rice Lake Weighing Systems® is a registered trademark of  
Rice Lake Weighing Systems.

All other brand or product names within this publication are trademarks or  
registered trademarks of their respective companies.

All information contained within this publication is, to the best of our knowledge, complete and  
accurate at the time of publication. Rice Lake Weighing Systems reserves the right to make  
changes to the technology, features, specifications and design of the equipment without notice.

The most current version of this publication, software, firmware and all other product  
updates can be found on our website:

[www.ricelake.com](http://www.ricelake.com)

# Revision History

---

This section tracks and describes manual revisions for awareness of major updates.

Revision	Date	Description
A	June 12, 2023	Initial manual release with product launch; Software version 1.0.0.0

*Table i. Revision Letter History*



*Technical training seminars are available through Rice Lake Weighing Systems. Course descriptions and dates can be viewed at [www.ricelake.com/training](http://www.ricelake.com/training) or obtained by calling 715-234-9171 and asking for the training department.*

# Contents

<b>1.0</b>	<b>Introduction</b>	<b>5</b>
<b>2.0</b>	<b>Installation</b>	<b>6</b>
2.1	Software Installation	6
2.2	Configuring RL Web Display with ISS Webhost	7
2.3	Configuring RL Web Display with an Existing Website Hosted at Localhost	11
2.4	Email Server Parameters	14
2.5	Licensing	15
<b>3.0</b>	<b>Login and Page Elements</b>	<b>16</b>
3.1	Access RL Web Display	16
3.2	RL Web Display Initial Administrator Password	16
3.3	Login and Logout	17
3.4	Reset Password	18
3.5	Menus	19
3.5.1	Menus and Options	19
3.5.2	Hiding and Displaying Menus	20
3.6	RL Web Display Home and About Pages	20
3.6.1	Home Page	20
3.6.2	About Page	22
<b>4.0</b>	<b>Account Management</b>	<b>23</b>
4.1	Access Manage Your Account Page	23
4.1.1	Changing Password	24
4.1.2	Personal Data	25
<b>5.0</b>	<b>Administration</b>	<b>27</b>
5.1	Users Page	28
5.1.1	About User Roles	28
5.1.2	User Account Creation	29
5.1.3	Edit Users	30
5.1.4	Delete Users	31
5.2	Application Logs Page	32
<b>6.0</b>	<b>Application Configuration</b>	<b>33</b>
6.1	Indicator Configuration	33
6.1.1	Indicator Configuration	34
6.2	Scales Configuration	35
6.3	Remote Display Configuration	36
6.4	Restart All Indicator Connections	37
6.5	View Indicator Details	38
6.6	Edit Indicators, Scales, and Remote Displays	39
6.6.1	Edit Indicators	39
6.6.2	Edit Scales	40
6.6.3	Edit Remote Displays	41
6.7	Delete Indicators, Scales and Remote Displays	42
6.7.1	Delete Indicators	42
6.7.2	Delete Scales	43
6.7.3	Delete Remote Displays	44



Rice Lake continually offers web-based video training on a growing selection of product-related topics at no cost. Visit [www.ricelake.com/webinars](http://www.ricelake.com/webinars)

# 1.0 Introduction

This manual provides an overview of RL Web Display Software installation and configuration procedures. The RL Web Display application replicates the weight display for one or more indicators using an Ethernet TCP/IP connection. Through an internet browser, RL Web Display allows basic access to the scale indicator, including Zero a scale and Stop/Go commands to a connected remote display.

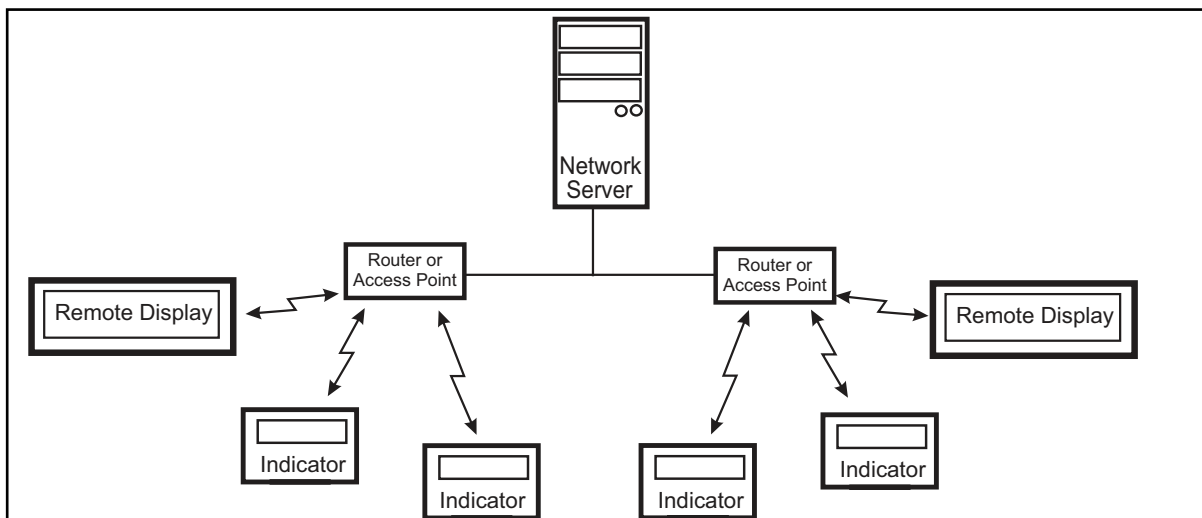


Figure 1-1. Indicator, Remote Display, Server TCP IP Connections

RL Web Display is compatible with multiple manufacturer's digital-weight displays that use a stream command format:

- 1280 Enterprise Series Programmable Weight Indicator and Controller
- 920i<sup>®</sup> Series Programmable Weight Indicator and Controller
- 880/880 Plus Performance<sup>™</sup> Series Programmable Weight Indicator/Controller
- 820i<sup>™</sup> Series Programmable Weight Indicator and Controller
- 720i<sup>™</sup> Programmable Weight Indicator and Controller
- IQ Plus<sup>®</sup> 710 Configurable Weight Indicator
- 680 Synergy Series Digital Weight Indicator
- 682 Synergy Series Weight Indicator
- 480 Legend<sup>™</sup> Series Digital Weight Indicator
- 420 Plus Digital Weight Indicator
- IQ Plus<sup>®</sup> 355 Digital Weight Indicator
- VIRTU<sup>i</sup>2<sup>®</sup> PC-based HMI for iQUBE<sup>2</sup>
- Avery Weigh-Tronix<sup>®</sup> E1105
- Avery Weigh-Tronix<sup>®</sup> WI127
- Cardinal<sup>®</sup> 738
- Mettler Toledo<sup>®</sup> 8530



**NOTE:** Indicators must be connected Ethernet TCP/IP.



Manuals are available from Rice Lake Weighing Systems at [www.ricelake.com/manuals](http://www.ricelake.com/manuals)

Warranty information is available at [www.ricelake.com/warranties](http://www.ricelake.com/warranties)

### System Requirements

- Windows 10<sup>®</sup> build 1607 or newer (64 bit only) or equivalent Windows<sup>®</sup> Server OS
- 2.0 GHz processor or faster
- 250 MB drive space needed for install
- 8 GB ram or greater
- Ethernet TCP/IP connection
- A supported internet browser (Google<sup>®</sup> Chrome<sup>®</sup>, Microsoft<sup>®</sup> Edge<sup>®</sup>, Mozilla<sup>®</sup> Firefox<sup>®</sup> or Apple<sup>®</sup> Safari<sup>®</sup>)

## 2.0 Installation

### 2.1 Software Installation

1. Download RL Web Display software and unzip the file if necessary.



**NOTE:** Typically a download link is supplied with the purchase of software.

2. Launch **RLWebDisplay.Installer.exe**.
3. Read the Rice Lake Weighing Systems License Agreement. Enable the check box below the agreement if the terms are acceptable.

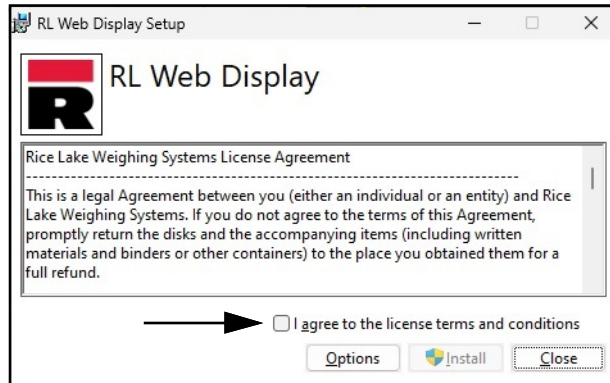


Figure 2-1. RL Web Display Installation Window

4. (Optional) Perform the following to change the installation location:
  - Select **Options**, then **Browse** to install RL Web Display in a user specified file location.
  - Select **OK** to return to the previous window.

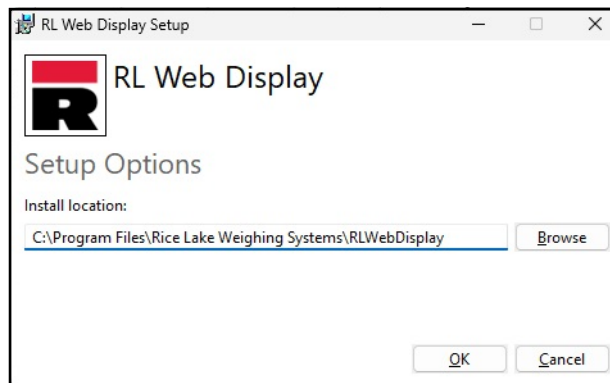


Figure 2-2. RL Web Display Installation Options



**NOTE:** After activation, the executable file distributes the application and all required prerequisites on the system. If an error occurs during the installation or database setup, the information is written to the `installlog.txt` file located in the root folder of the `C:\` drive.

- The Installation Successfully Completed window displays, select **Close**. RL Web Display is successfully installed.

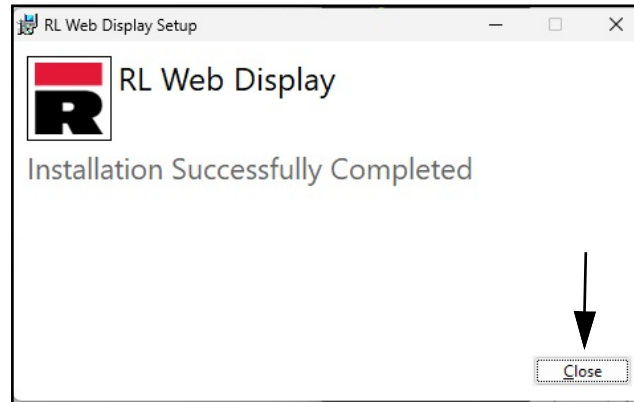


Figure 2-3. RL Web Display Installation Window

## 2.2 Configuring RL Web Display with IIS Webhost

After RL Web Display software is installed, Microsoft Internet Information Services (IIS) can be optionally installed to act as a web host for RL Web Display. For information on installing Windows features and software, consult Windows help.

**IMPORTANT:** Installation of IIS and the Reverse Proxy is optional and only required if the instance of RL Web Display will be accessible from the internet.

**NOTE:** An SSL certificate to enable HTTPS is not provided. The customer must supply a SSL certificate if it is intended to make RL Web Display public or if their IT policy requires support for HTTPS.

- To install required Windows system components, perform one of the following:

**NOTE:** Step A uses an optional shortcut to add the Windows system components opposed to the manual process outlined in Step B.

- Run the `rlwebdisplay-dism-win10.cmd` script (from the installation package) as an Administrator.
- In Windows Search enter "Turn Windows features on or off" and select the **Option** that displays.

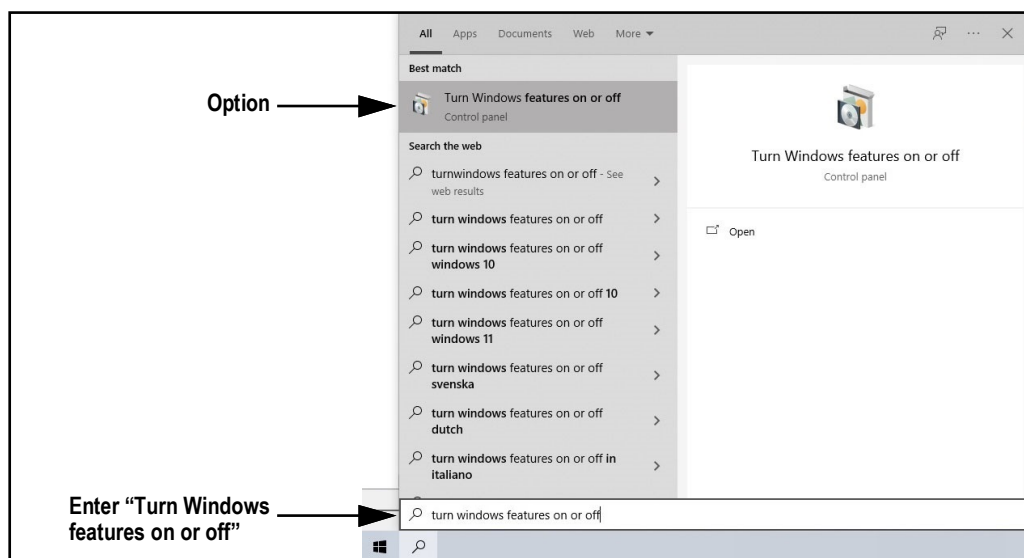


Figure 2-4. Search for Turn Windows Features On or Off

- B.1 Windows Features window displays.
- B.2 Expand **Internet Information Services** tree and enable check boxes as displayed in [Figure 2-5](#).
- B.3 Select **OK**.

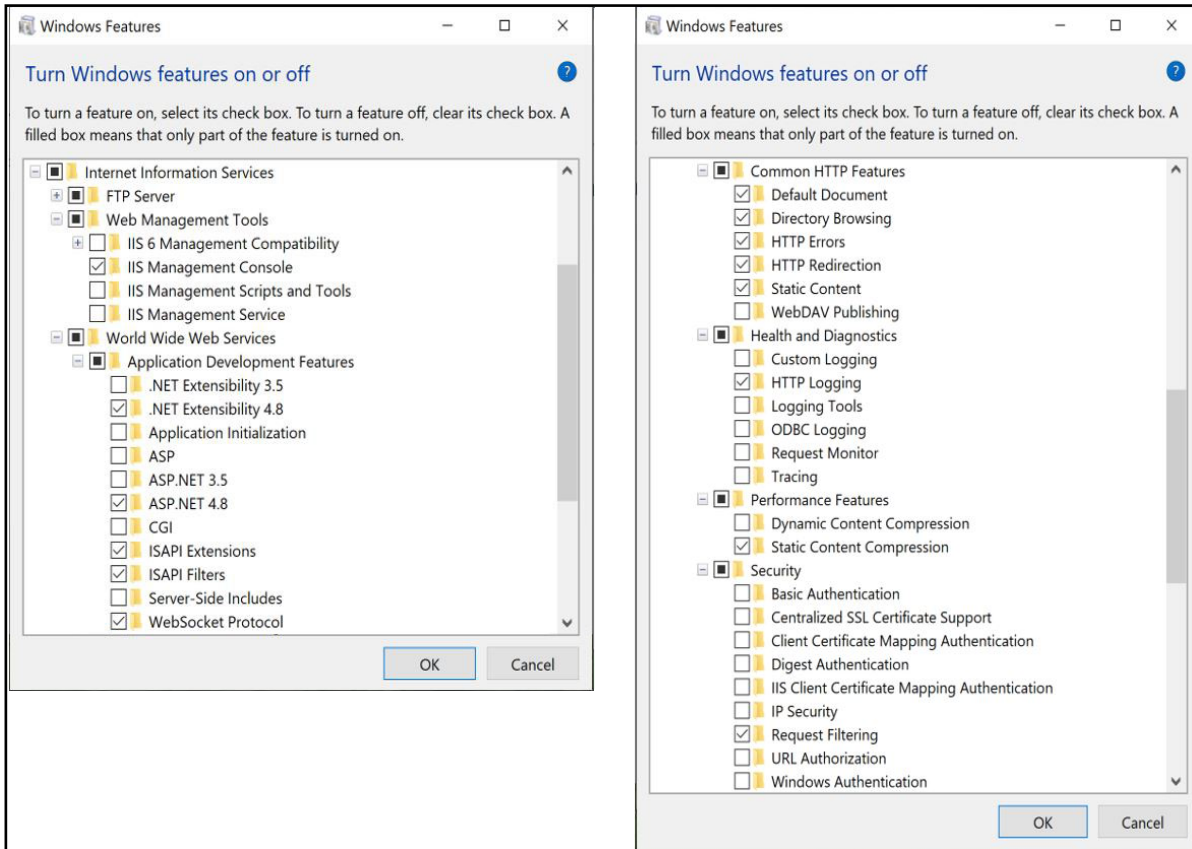


Figure 2-5. Windows Features Configured

- 3. Download and install the following software from <https://www.iis.net>:
  - IIS URL Rewrite Extension: <https://www.iis.net/downloads/microsoft/url-rewrite>
  - IIS Request Routing Extension: <https://www.iis.net/downloads/microsoft/application-request-routing>
- 4. Configure IIS as a Reverse Proxy for RL Web Display:
  - 4.1 Launch the **Internet Information Services (IIS) Manager** from the Start menu.
  - 4.2 Select **Default Web Site** in the left column then double-click **URL Rewrite**.

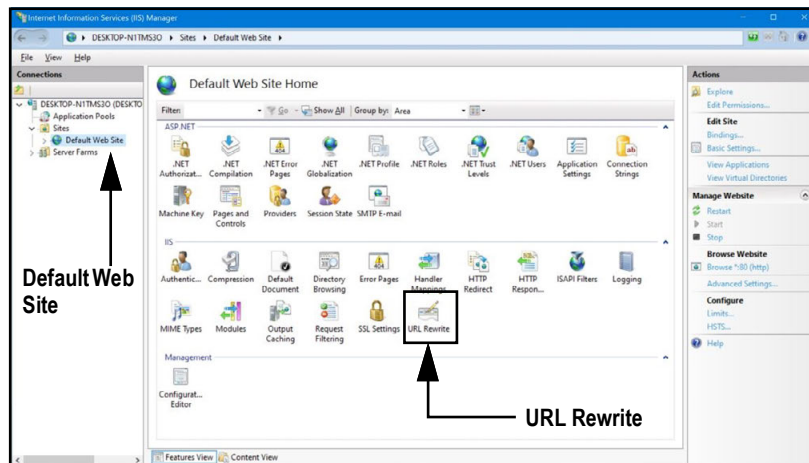


Figure 2-6. Internet Information Services Manager



4.3 Select the **Add Rule(s)** in the right column.

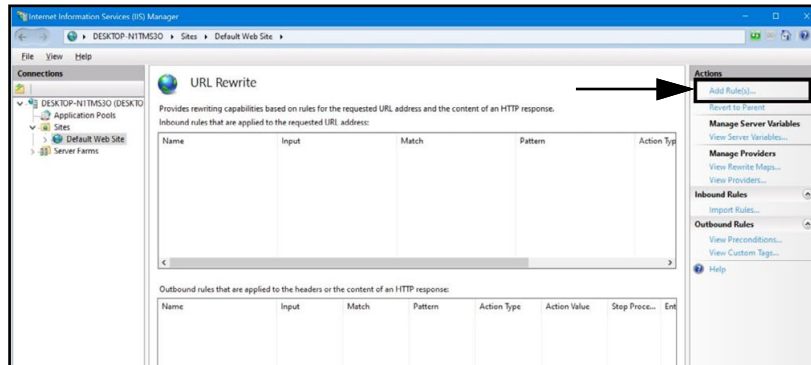


Figure 2-7. Internet Information Services Manager with Add Rule(s) Identified

4.4 The Add Rule(s) window displays.

4.5 Select **Reverse Proxy** in the Inbound and Outbound Rules section and then select **OK**.

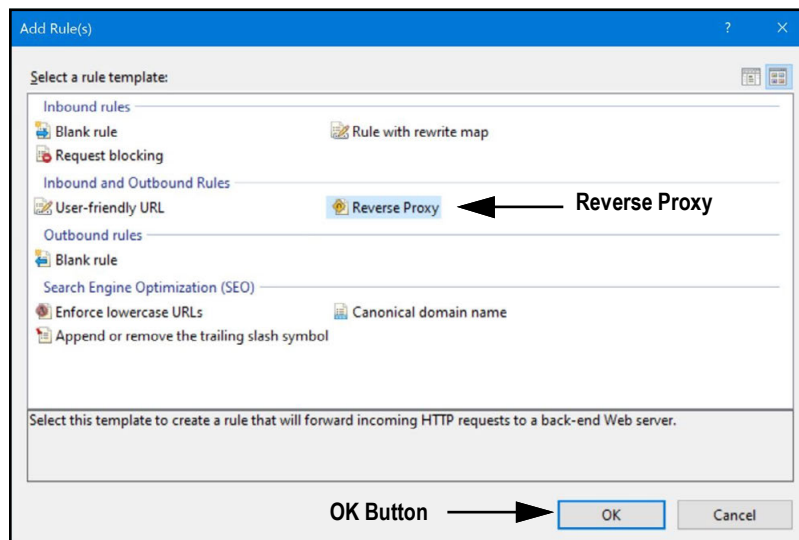


Figure 2-8. Add Rules Window with Reverse Proxy Identified

4.6 A warning may appear requesting to Enable Proxy Functionality.

4.7 Select **OK**.

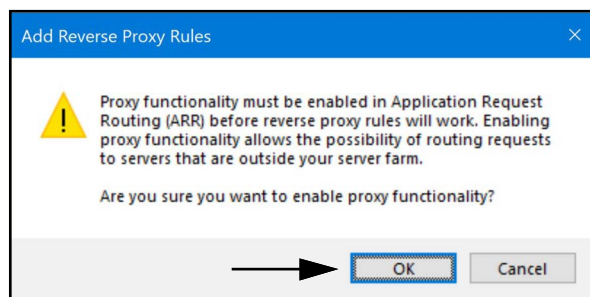


Figure 2-9. Add Reverse Proxy Rules Confirmation Window

- 4.8 The Add Reverse Proxy Rule Window displays.
- 4.9 Enter **127.0.0.1:5000** as the IP address to configure IIS to forward requests to RL Web Display.
- 4.10 Activate **Enable SSL Offloading** to process HTTPS traffic.
- 4.11 Ensure the **Outbound Rules** is not configured.
- 4.12 Select **OK** to apply the rule.

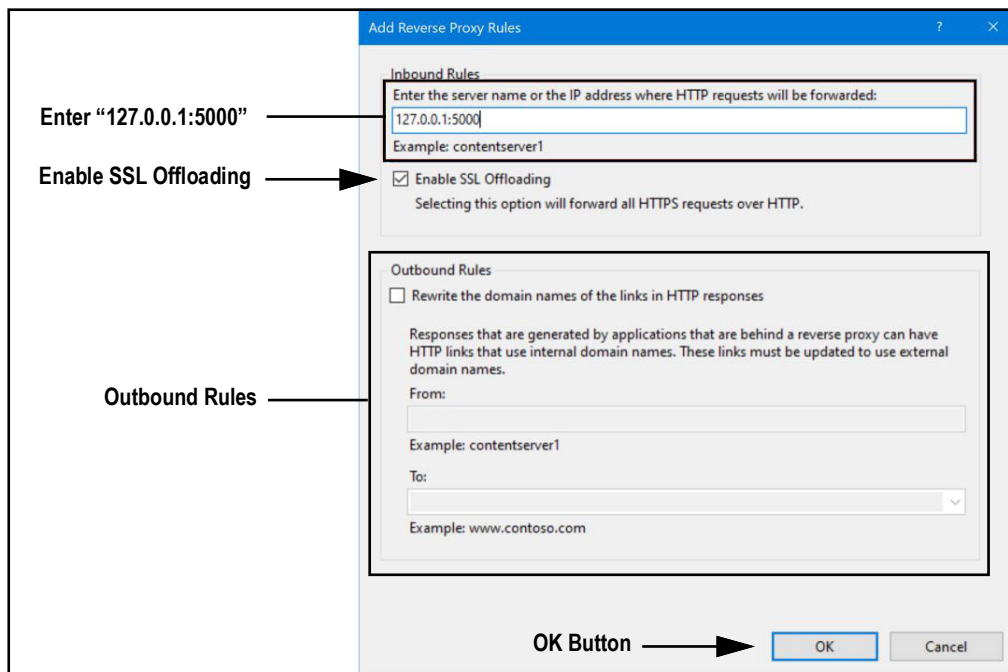


Figure 2-10. Add Reverse Proxy Rules Window with Elements Identified

- 4.13 Once complete, navigate to **rlwebdisplay.localhost** (with a supported internet browser) to open RL Web Display. See [Section 3.2 on page 16](#) for information about logging in the time first as an administrator.

## 2.3 Configuring RL Web Display with an Existing Website Hosted at Localhost

If a website is currently installed on the computer (hosted at localhost), the following steps can be followed to configure IIS to create a different URL:

**IMPORTANT:** Installation of IIS and the Reverse Proxy is optional and only required if the instance of RL Web Display will be accessible from the internet.

**NOTE:** An SSL certificate to enable HTTPS is not provided. The customer must supply a SSL certificate if it is intended to make RL Web Display public or if their IT policy requires support for HTTPS.

1. Launch Internet Information Services (IIS) Manager from the Start menu.
2. Remove the reverse proxy rule if added to the default website.
3. Add the desired proxy site address.

**NOTE:** In this procedure the proxy name `rlwebdisplay.localhost` is used.

- 3.1 Right-click the **Sites** folder in the left panel and select **Add Website**.

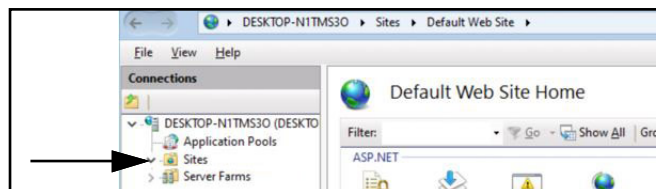


Figure 2-11. Internet Information Services Manager with Sites Folder Identified

- 3.2 The Add Website window displays.
- 3.3 Enter the proxy name as the Site and Host names (in this example `rlwebdisplay.localhost`).
- 3.4 Set the Physical path to a folder called RL Web Display located in the following directory:  
**C:\inetpub\wwwroot\rlwebdisplay**
- 3.5 Select **OK**.

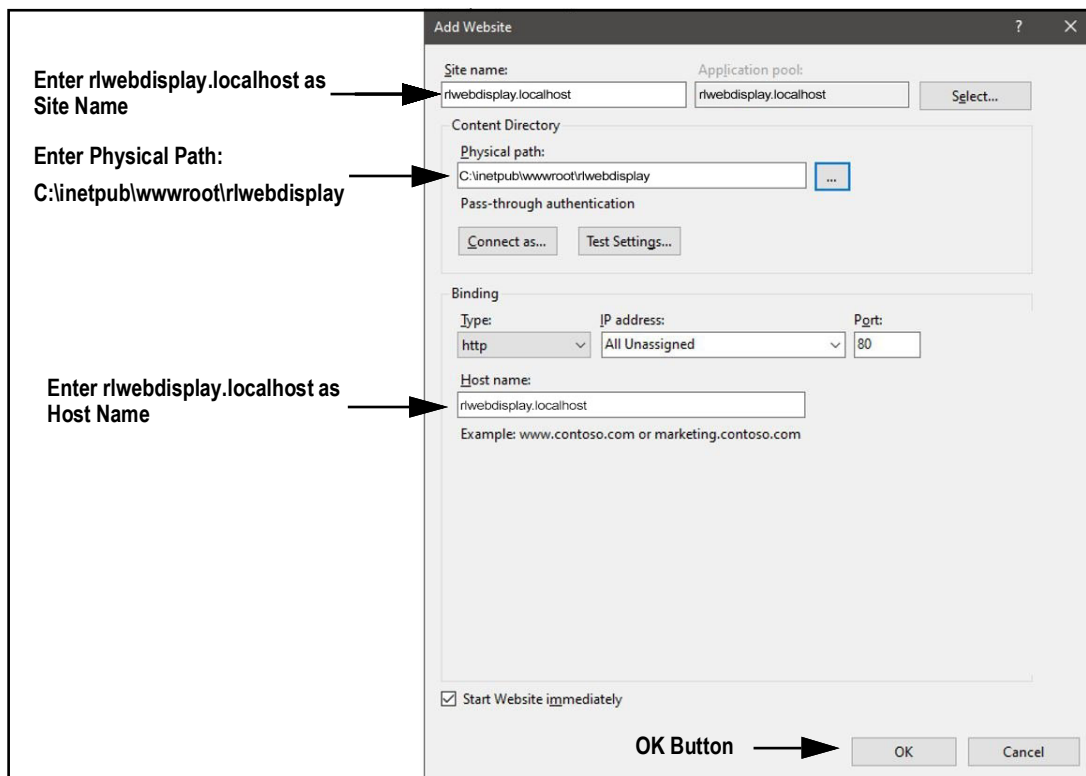


Figure 2-12. Add Website Window with Elements Identified

4. Configure IIS as a Reverse Proxy for the configured proxy address (in this example rlwebdisplay.localhost:).

4.1 Select **Default Web Site** in the left column then double-click **URL Rewrite**.

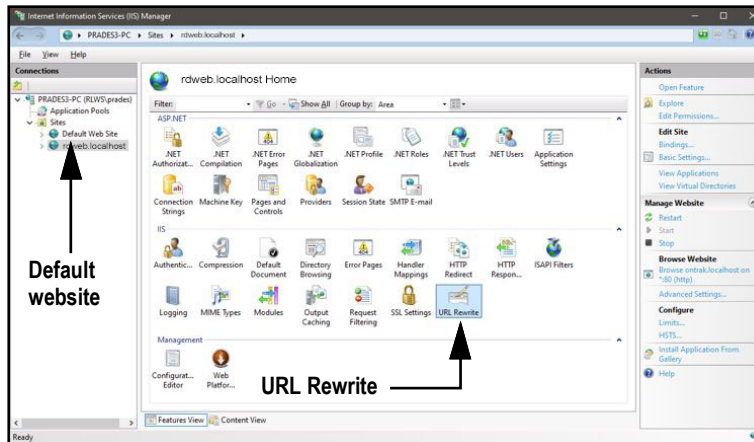


Figure 2-13. Internet Information Services Manager with URL Rewrite Identified

4.2 Select **Add Rule(s)** from the right column.

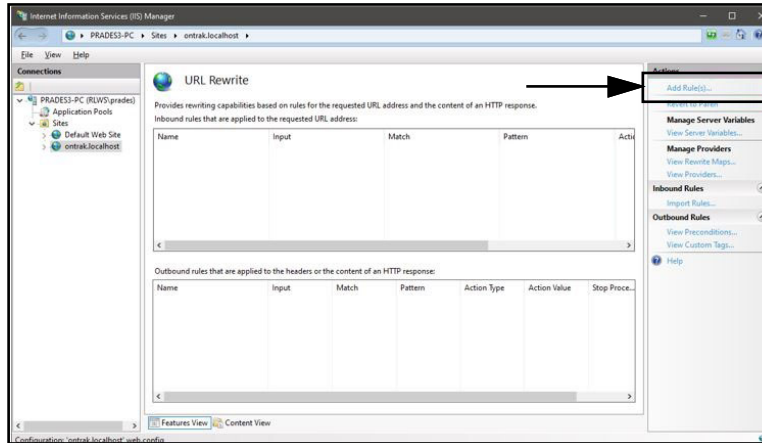


Figure 2-14. Internet Information Services Manager with Add Rule(s) Identified

4.3 Select **Reverse Proxy** in the Inbound and Outbound Rules section.

4.4 Select **OK**.

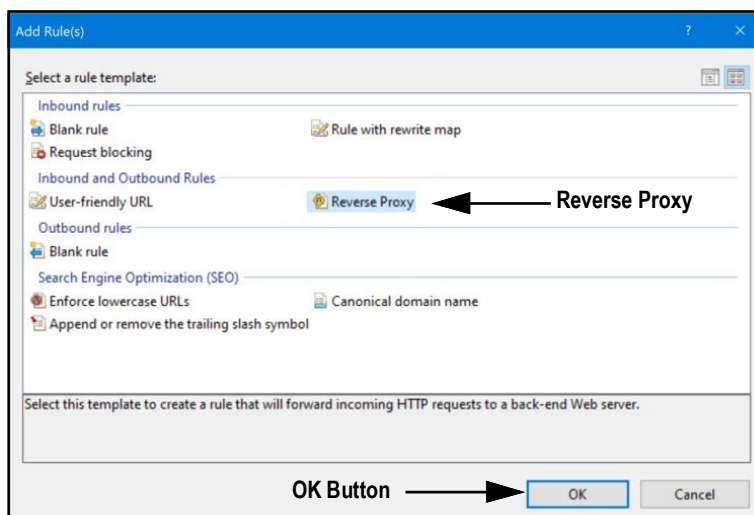


Figure 2-15. Add Rule(s) Window with Reverse Proxy Identified

- 4.5 A warning may appear requesting to Enable Proxy Functionality.
- 4.6 Select **OK**.

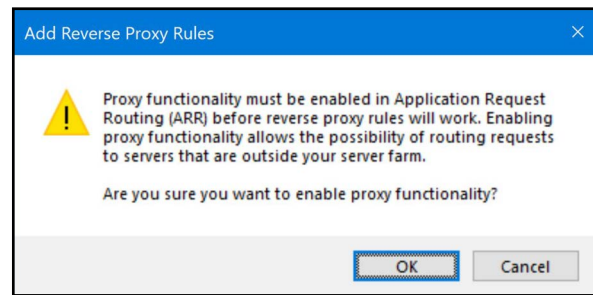


Figure 2-16. Add Reverse Proxy Rules Confirmation Window

- 4.7 The Add Reverse Proxy Rules window displays permitting configuration of the new rule.
- 4.8 Enter **127.0.0.1:5000** as the IP address to configure IIS to forward requests to RL Web Display.
- 4.9 Activate **Enable SSL Offloading** to process HTTPS traffic.
- 4.10 Ensure the **Outbound Rules** is not configured.
- 4.11 Select **OK** to apply the rule.

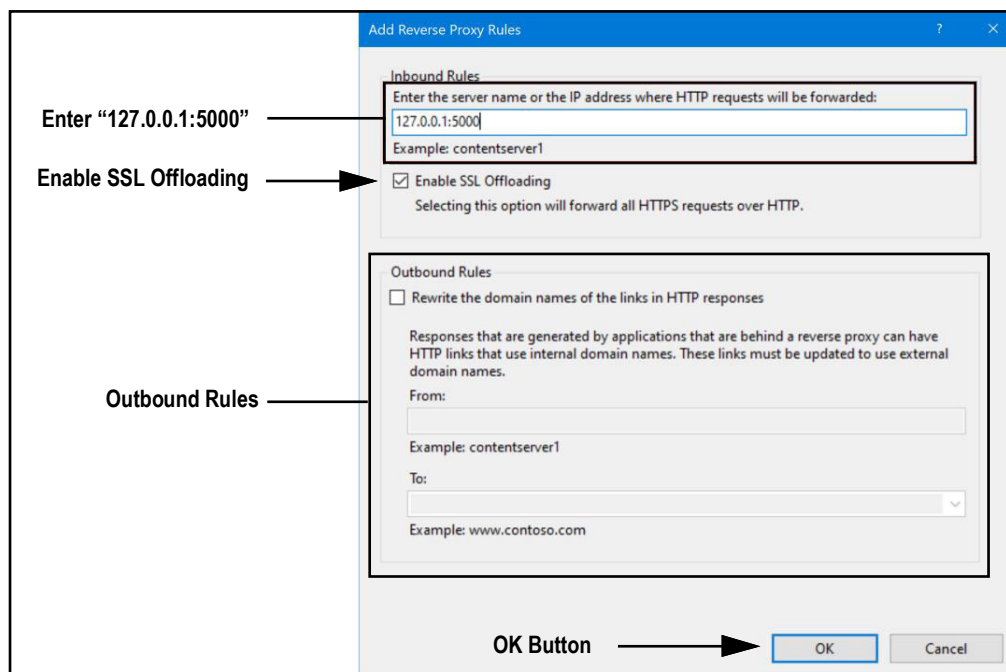


Figure 2-17. Add Reverse Proxy Rules Window with Elements Identified

- 4.12 Once complete, navigate top the configured proxy address (in this example rlwebdisplay.localhost) to open RL Web Display. See [Section 3.2 on page 16](#) for information about logging in the time first as an administrator.

## 2.4 Email Server Parameters

Email Server parameters are typically completed after installation. These parameters are configured by editing the **appsettings.json** file using a text editor. Unless changed during installation, the file is located in the application installation folder:

**C:\Program Files\Rice Lake Weighing Systems\RLWebDisplay**

Open **appsettings.json** with a text editor such as Notepad with administrator privileges. Make required changes and save the file. Restart the computer for the changes to take effect.

Configure the email server parameters to enable account confirmation, account recovery and other email related features. [Figure 2-18](#) displays an example of email parameters.

```
"EmailOptions": {
  "Enabled": false,
  "MailServer": "",
  "MailPort": 587,
  "SenderName": "RL Web Display",
  "FromAddress": "",
  "Sender": "",
  "Password": "",
  "EnableSsl": true
}
```

Figure 2-18. Email Server Parameters

Parameter	Description
Enabled	Set to True to enable, or False to disable
MailServer	The name or IP Address of the SMTP email server. Obtain this information from email provider or the local IT department. Leave blank to disable email functionality
MailPort	Configures the TCP port used by the mail server. Obtain this information from the mail provider or the IT department
SenderName	The display name of the sender
FromAddress	The email address of the sender
Sender	The account name used for authentication on the email server. This is typically an email address
Password	The account password
EnableSsl	Set to true or false to configure secure sockets layer encryption when authenticating and sending email messages. This information can be obtained from the email provider or IT department. The default value is true

Table 2-1. Email Parameters Descriptions

## 2.5 Licensing

RL Web Display installs in a demo mode and it must be licensed to unlock the program. When requesting a license from Rice Lake Weighing Systems the Device Id number (in the About page) must be provided. Once licensed, the application is unlocked.

1. Access RL Web Display (see [Section 3.1 on page 16](#)).
2. Select **About** option.

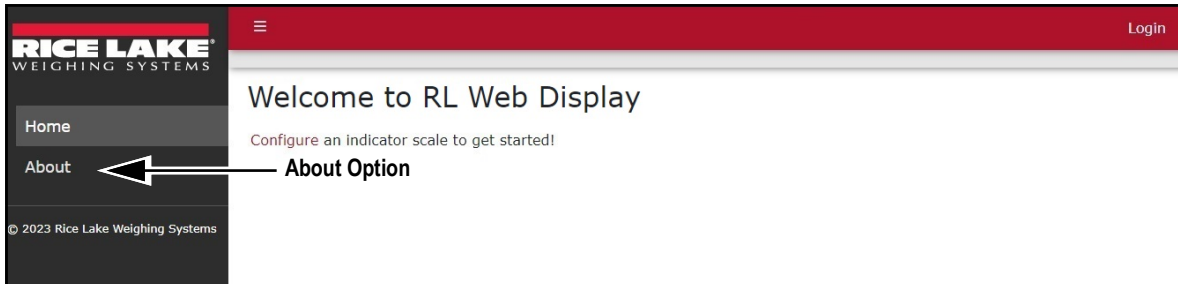


Figure 2-19. RL Web Display Opened In Microsoft Edge

3. About RL Web Display displays. Record the Device Id.
4. Contact Rice Lake Weighing Systems' sales or technical support (US 800-472-6703 or International +1 715-234-9171) to purchase the full version of RL Web Display.
5. A file titled **license.lic** will be provided, place the file into the following directory:  
**C:\ProgramData\Rice Lake Weighing Systems\RL Web Display**



**IMPORTANT: Features will not be available unless license.lic file is placed in the correct folder:**

6. Reopen RL Web Display. Once the license is activated, RL Web Display unlocks.

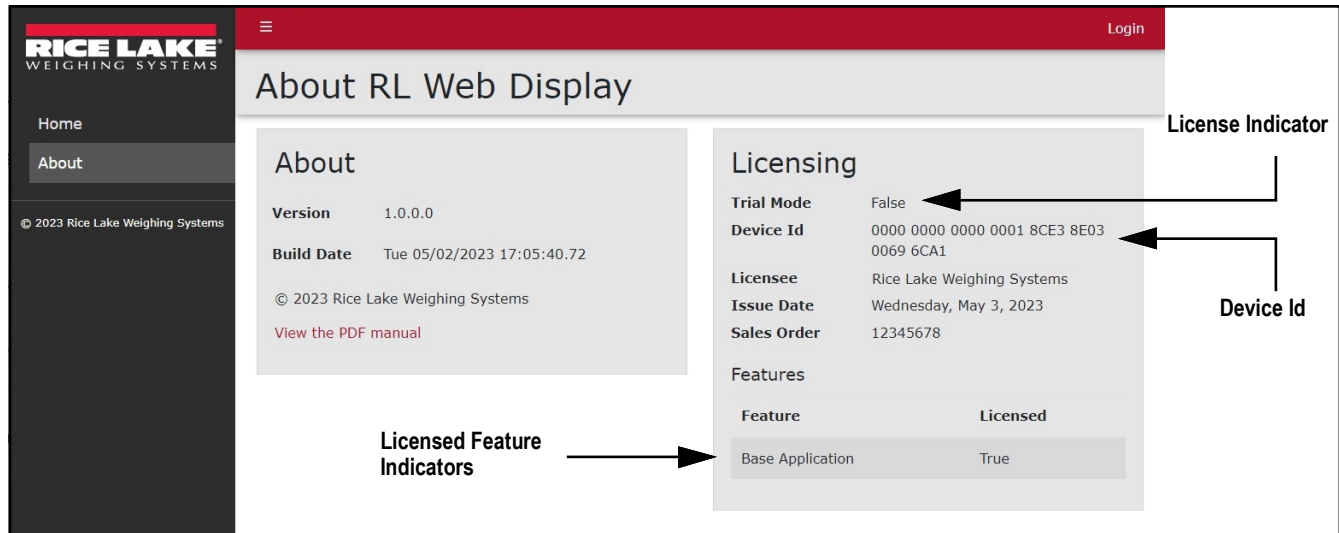


Figure 2-20. About Page Elements with Licensed Features

## 3.0 Login and Page Elements

This section discusses application navigation, pages and page elements that may display during normal use.

Topics in this section include:

- Access RL Web Display ([Section 3.1](#))
- RL Web Display Initial Administrator Password ([Section 3.2 on page 16](#))
- Login and Logout ([Section 3.3 on page 17](#))
- Reset Password ([Section 3.4 on page 18](#))
- RL Web Display Menus ([Section 3.5 on page 19](#))
- RL Web Display Pages ([Section 3.6 on page 20](#))

### 3.1 Access RL Web Display

RL Web Display may be accessed from a supported internet browser (see [Section on page 5](#)).

1. There are two options for accessing RL Web Display, depending on configuration navigate to:
  - [localhost:5000](#) or [{host ip address}:5000](#), if using the computer where the RL Web Display was installed (see [Section 2.2 on page 7](#)).
  - Configured web address (in this example [rlwebdisplay.localhost](#)), if the RL Web Display is configured to work with an existing default website (see [Section 2.3 on page 11](#)).

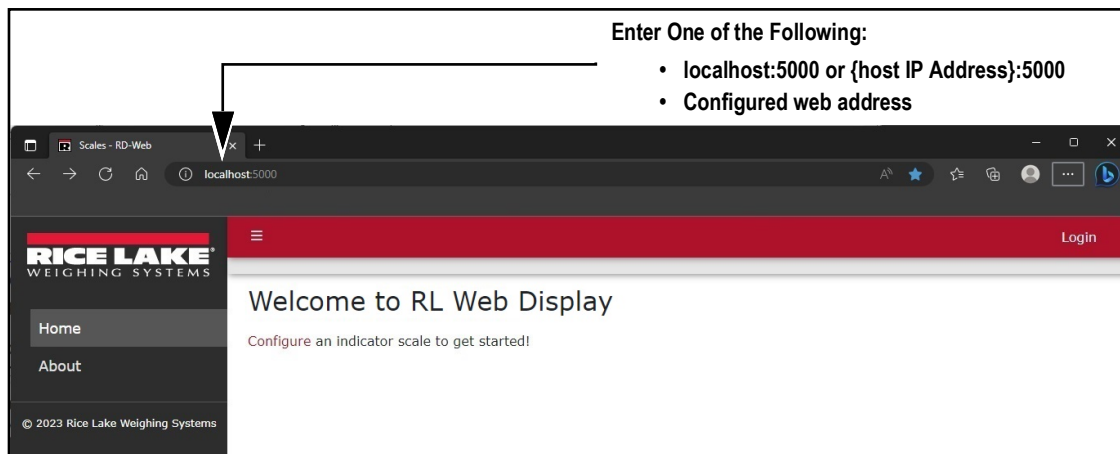


Figure 3-1. RL Web Display Opened In Microsoft Edge

### 3.2 RL Web Display Initial Administrator Password

To perform all site operations, the system creates an administrator account titled **admin@localhost**.

The default password for the account is randomly generated. The password is stored in the initialAdminPassword.txt file located in the following installation folder:

**C:\Program Files\Rice Lake Weighing Systems\RLWebDisplay\secrets**

Open this file to view the current password. After the first login, RL Web Display redirects to the Change Password page to configure the preferred administrator password.



### 3.3 Login and Logout

Upon launching the website a welcome page displays. Select Login and enter the required credentials to access RL Web Display.

1. Access RL Web Display (see [Section 3.1 on page 16](#)).
2. Click **Login**.

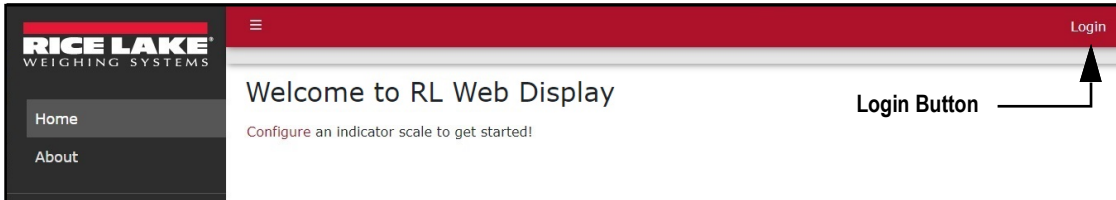


Figure 3-2. Login Button

3. Enter username and password in the text fields.
4. Select **Log In**.

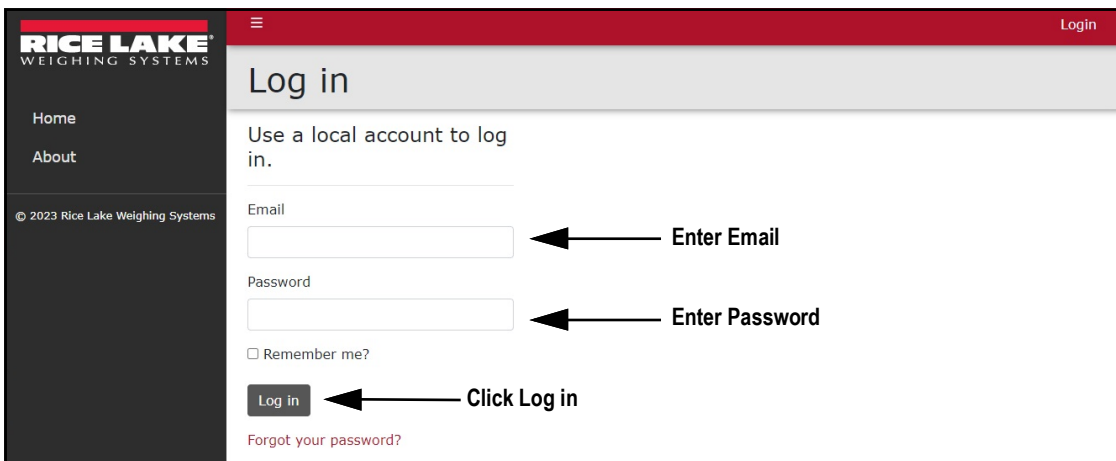


Figure 3-3. Login Prompt

5. When logged in RL Web Display, the user account email address displays adjacent to the Logout button.
6. Select **Logout**.

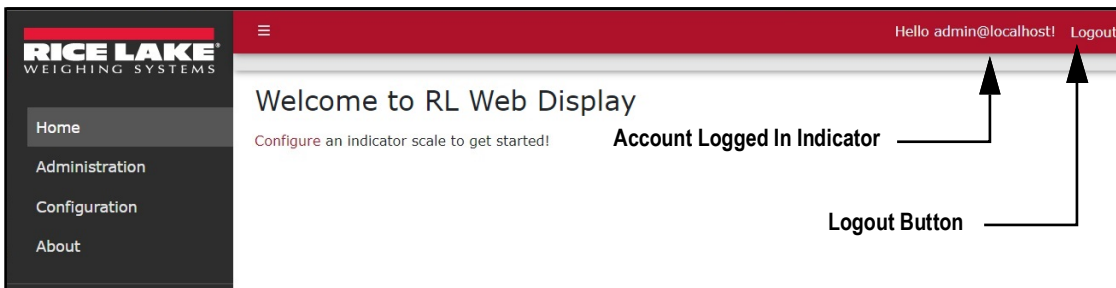


Figure 3-4. Logout Button

7. RL Web Display logs out and returns to the Home page.

## 3.4 Reset Password



**IMPORTANT:** In order to reset, a password an email server must be configured (see [Section 2.4 on page 14](#)). If an email server is not configured, reset password emails are not generated and consequently forgotten passwords are not reset.

1. Access RL Web Display (see [Section 3.1 on page 16](#)).
2. Select **Login** then **Forgot your password?**.

Figure 3-5. Login Prompt with Forgot your password Option Identified

3. Enter email address associated with the account.
4. Click **Submit**.

Figure 3-6. Forgot Your Password Page

5. After activating Submit, RL Web Display indicates the password reset information is sent to the specified email address.

Figure 3-7. Forgot Password Confirmation Page

6. Open email and follow instructions to complete password reset process.

## 3.5 Menus

### 3.5.1 Menus and Options

RL Web Display has several elements available on every page that facilitate operation. Each element is identified in Figure 3-8.



**NOTE:** If the Main menu (left column) is not currently available, verify if it is hidden (see [Section 3.5.2 on page 20](#)).

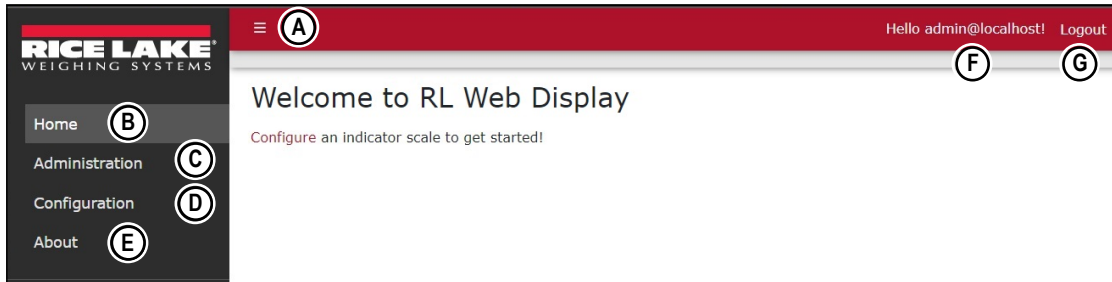


Figure 3-8. RL Web Display Elements

Item	Function	Description
A	Menu Button	Collapses or expands the Main menu (see <a href="#">Section 3.5.2 on page 20</a> )
B	Home Option	Opens Home page (see <a href="#">Section 7.0</a> )
C	Administration Option	Opens Administration page which provides access to user configuration and viewing log files (see <a href="#">Section 5.0 on page 27</a> ) <b>NOTE: Only available to Administrator accounts</b>
D	Configuration	Opens Configuration page which provides access to system configuration (see <a href="#">Section 6.0 on page 33</a> ) <b>NOTE: Only available to Administrator accounts</b>
E	About Option	Opens About page which provides software version, build version and licensing information (see <a href="#">Section 3.6.2 on page 22</a> )
F	Account Option	Opens Account Management page which provides the functionality to change information for the active account (see <a href="#">Section 4.0 on page 23</a> )
G	Logout Option	Logs out of RL Web Display (see <a href="#">Section 3.3 on page 17</a> )

Table 3-1. RL Web Display Element Descriptions

## 3.5.2 Hiding and Displaying Menus



**NOTE:** The Menu is hidden by default with small screen devices, such as a mobile phone. In this case the procedure is reversed.

It is possible to hide and display the Main menu (left column in RL Web Display). Perform the following to hide the Main Menu.

1. While the Main menu is open, select the **Menu** button to hide it.

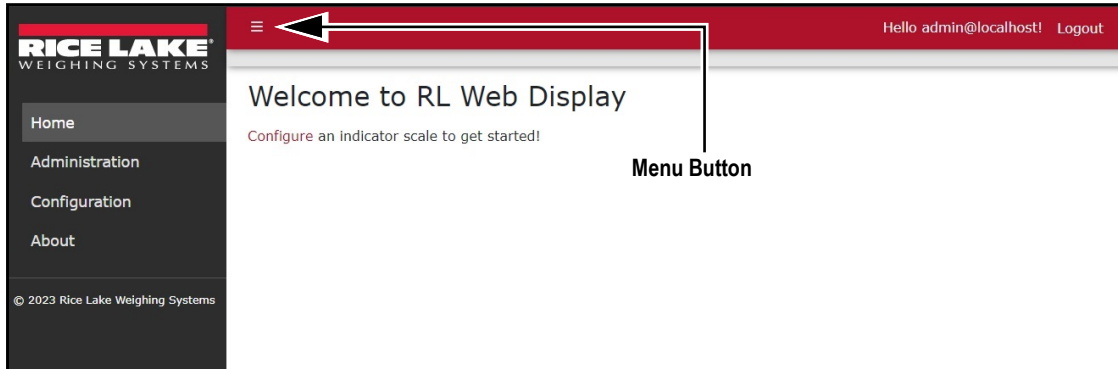


Figure 3-9. Home Page with Menu Button Identified

2. The Main menu hides.

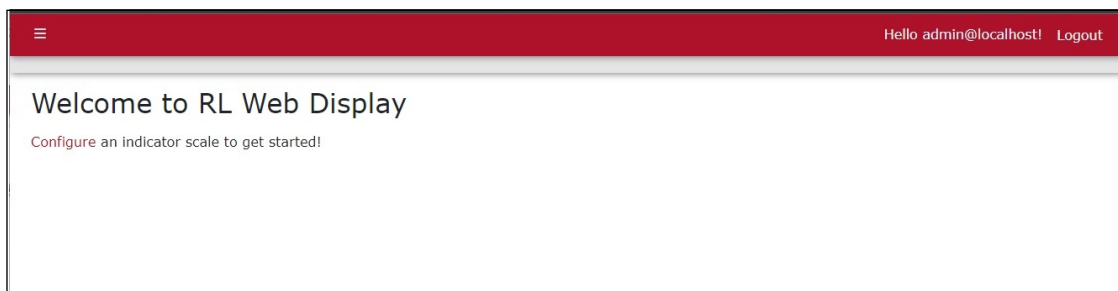



Figure 3-10. Home Page with Menu Collapsed

3. Select  (menu button) again to display the Main menu.

## 3.6 RL Web Display Home and About Pages

### 3.6.1 Home Page

When logging to RL Web Display the Home page automatically displays. To return to the Home page at anytime, select **Home** from the menu.

#### 3.6.1.1 Home Page Prior to Configuration

Prior to system configuration, the contents of the Home page only contains a link to configure indicators.



**NOTE:** An indicator and scale must be configured (see [Section 6.0 on page 33](#)), otherwise the Home page displays a message about configuration.

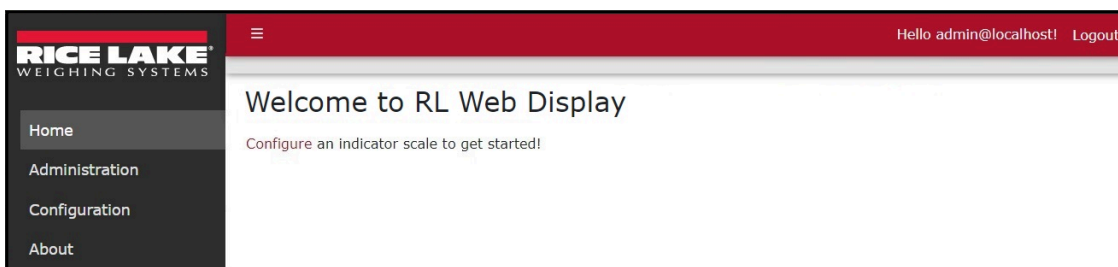


Figure 3-11. Home Page without Scales Configured

### 3.6.1.2 Home Page After Configuration

After configuration, the Home page provides a representation of each scale's display. Representations mirror displayed information from the indicator. In addition each representation provides Zero, Go (if Laser/Light2/3 is configured) and Stop (if Laser/Light2/3 is configured) buttons.



**NOTE:** Scale quantity and names vary depending on configuration (see [Section 6.0 on page 33](#)). Scales are displayed in configuration order. Scale names are derived from the Scale Name parameter (see [Section 6.2 on page 35](#)).

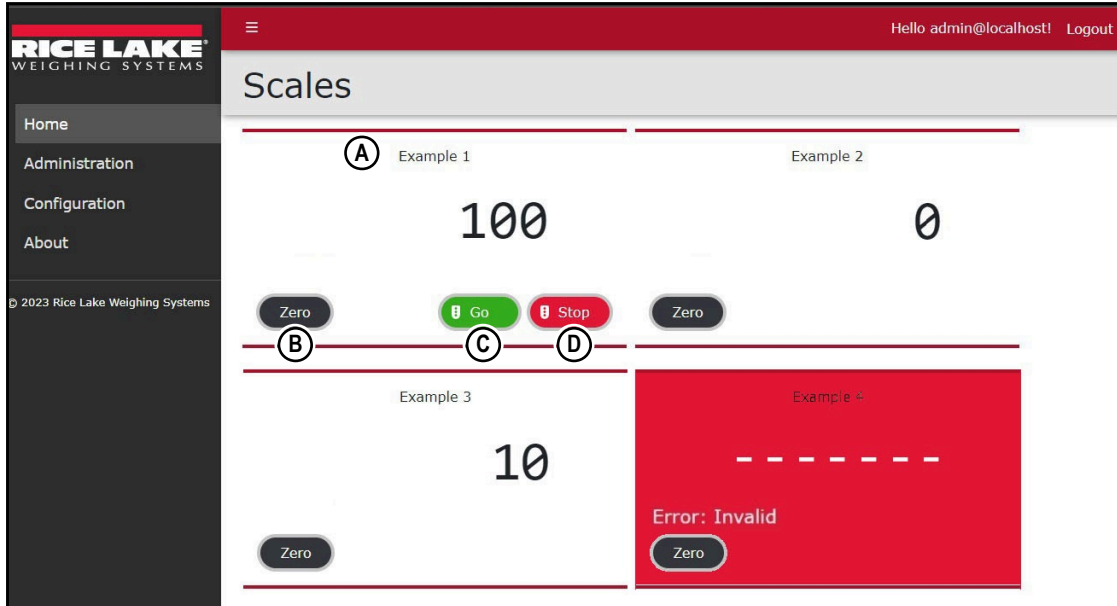


Figure 3-12. Home Page with Scales Displayed

Elements identified in [Figure 3-12](#) are described in the [Table 3-2](#):

Item	Function	Description
A	Virtual Scale Display	Displays weight received from the scale <b>NOTE: The background color indicates the state of the scale:</b> <ul style="list-style-type: none"> <li>• White shading indicates the scale is ready to weigh</li> <li>• Red indicates there is an error with the scale</li> </ul>
B	Zero	Zeros the scale
C	Go	Sends a command to turn on the Go symbol to a LaserLight2/3 remote display. <b>NOTE: This button only appears if a LaserLight2/3 is configured with a scale (see <a href="#">Section 6.3 on page 36</a>).</b>
D	Stop	Sends a command to turn on the Stop symbol to a LaserLight2/3 remote display. <b>NOTE: This button only appears if a LaserLight2/3 is configured with a scale (see <a href="#">Section 6.3 on page 36</a>).</b>

Table 3-2. Scale Page Element Descriptions

### 3.6.2 About Page

The About page is selected from the Main menu and provides various information about RL Web Display.

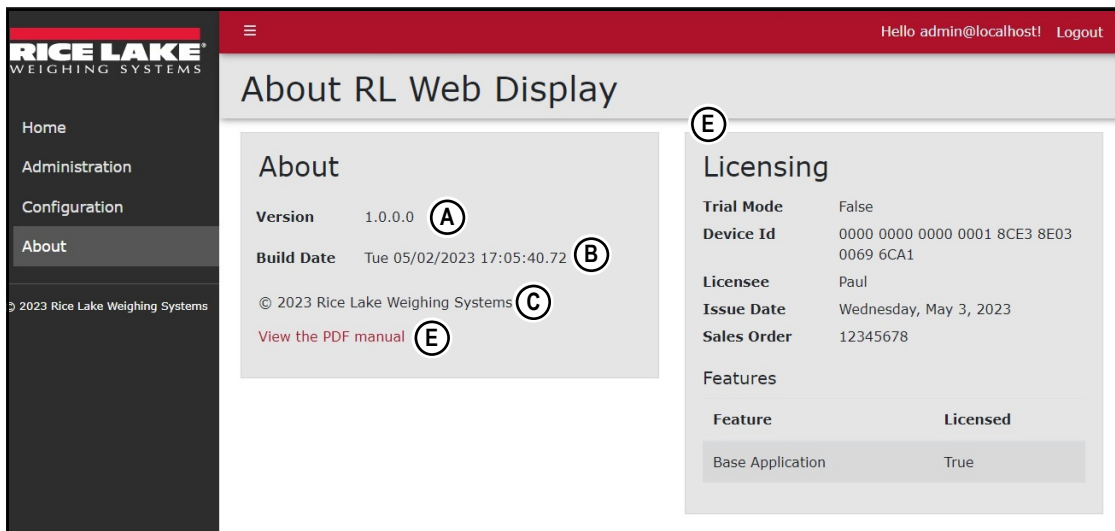


Figure 3-13. About Page Elements

Item	Feature	Description
A	Version Display	Lists software version number
B	Build Date Display	Lists software version build date
C	Copyright	Provides copyright information
D	View the PDF manual	Opens a PDF of the manual in the default internet browser
E	Licensing Information	Displays licensing status

Table 3-3. About Page Elements Described

## 4.0 Account Management

This section discusses RL Web Display navigation, pages and page elements that may display during normal use. Account management provides the following functions:

- Access Manage Your Account Page (see [Section 4.1](#))
- Change Password (see [Section 4.1.1 on page 24](#))
- Download Personal Data (see [Section 4.1.2 on page 25](#))
- Delete Personal Data and Account (see [Section 4.1.2 on page 25](#))

### 4.1 Access Manage Your Account Page

1. Select the account email address (upper right corner).

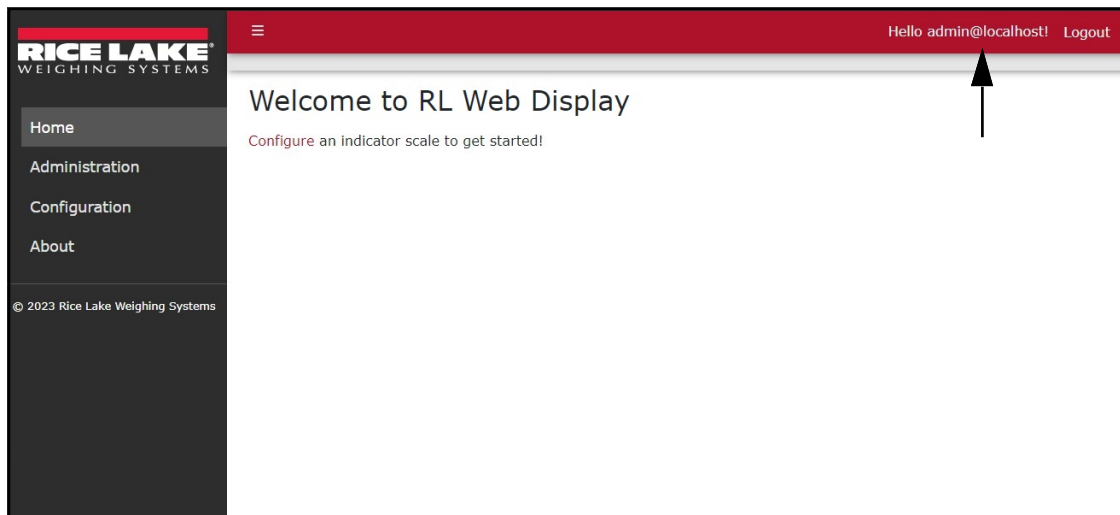


Figure 4-1. Account Settings Button

2. The Manage your account page displays.

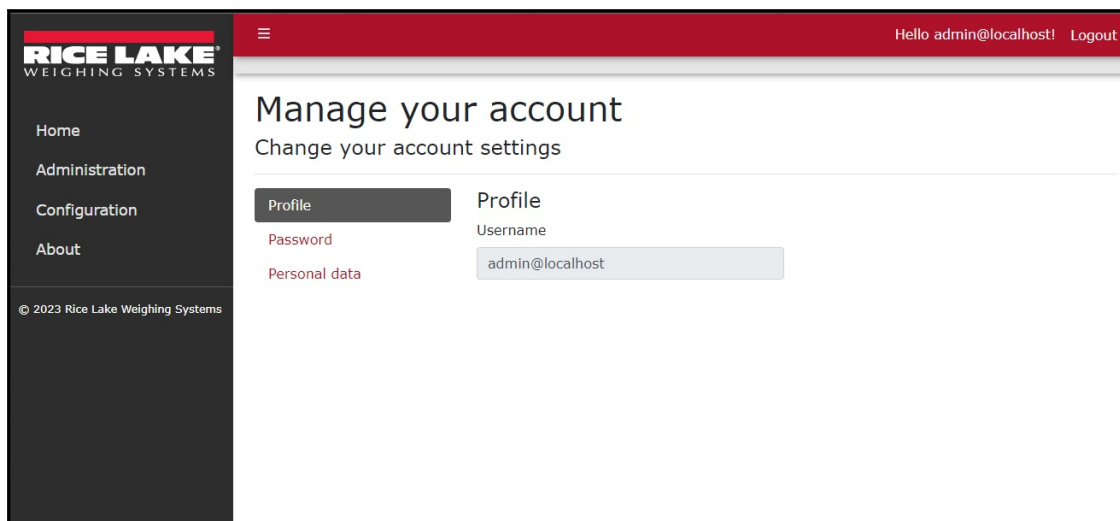


Figure 4-2. Manage Your Account Page

### 4.1.1 Changing Password

A password may be changed for the active account. Perform the following to change the password:



**NOTE: Passwords must have at least six characters, one non alphanumeric character (!@#\$\$%^&\*), one lowercase (a-z) character, one uppercase character (A-Z) and one number (0-9).**

1. Access Manage your account page (see [Section 4.1 on page 23](#)).
2. Select **Password**.

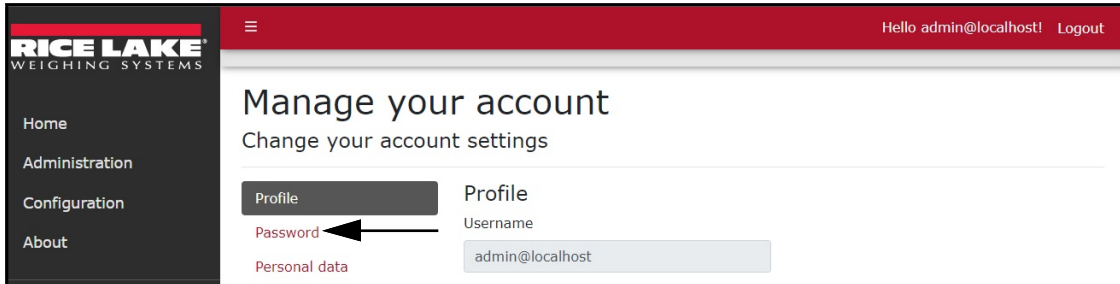


Figure 4-3. Manage Your Account Page

3. The Change Password page displays.
4. Enter current password.
5. Enter new password twice.
6. Select **Update password** to save the changes.

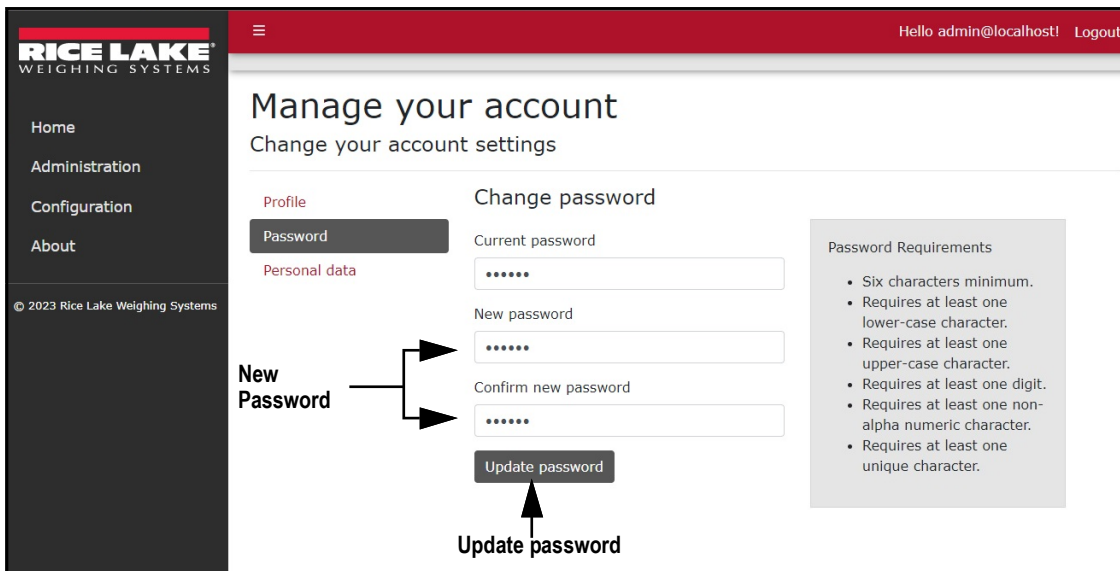


Figure 4-4. Change Password Fields with Data

7. If the password was updated, the Manage your account page confirms the change.

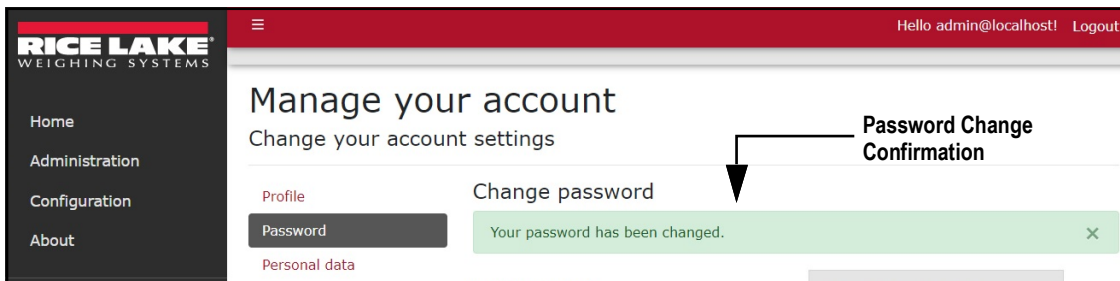


Figure 4-5. Password Changed Indicator



## 4.1.2 Personal Data

Each account contains information provided by the user including name and email address. The Personal Data page allows the user to download personal data or to delete personal data and account.

### 4.1.2.1 Download Personal Data

1. Access Manage your account page (see [Section 4.1 on page 23](#)).
2. Select **Personal Data**.

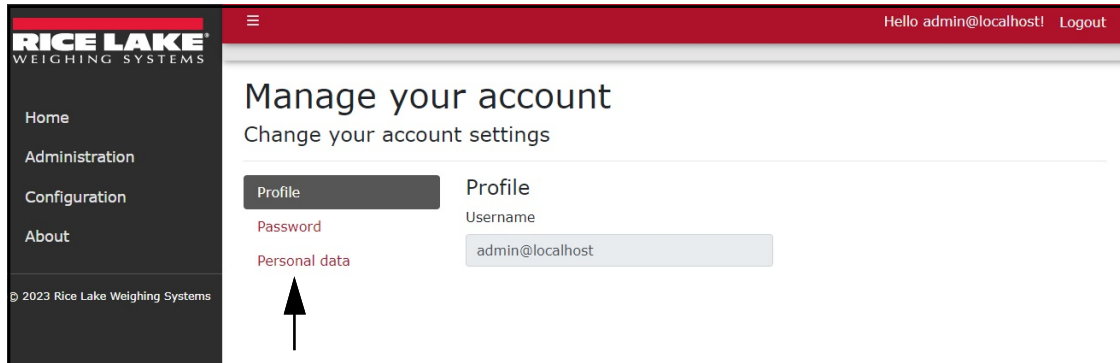


Figure 4-6. Manage Your Account Page

3. The Personal Data page displays.
4. To download data, select **Download** and follow internet browser prompts to save the data.



**NOTE:** The installed internet browser and its configuration determines the behavior when downloading the file. The internet browser may automatically download the file, open the Save As window, or request if the file should be downloaded.

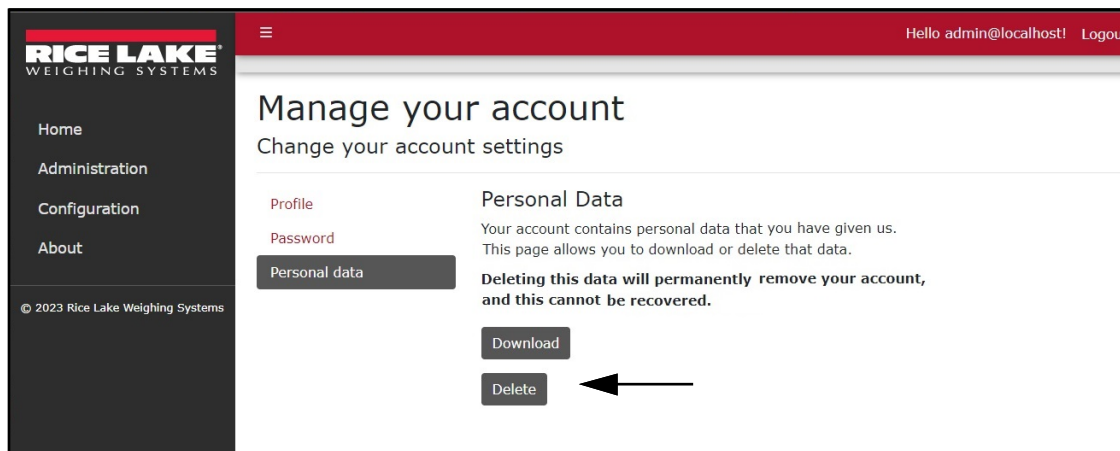


Figure 4-7. Personal Data Page

### 4.1.2.2 Delete Personal Data and Account

**!** **IMPORTANT:** Deleting personal data permanently deletes data associated with account and closes the account.

1. Access Account management page (see Section 4.1 on page 23).
2. Select **Personal Data**.

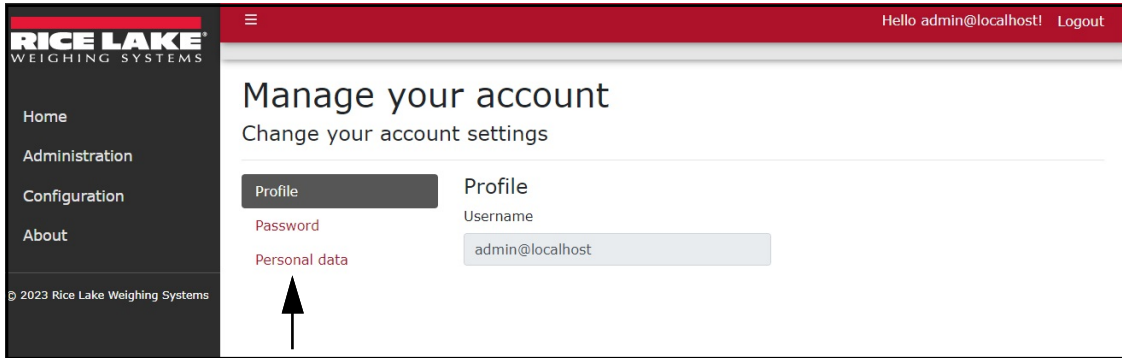


Figure 4-8. Manage Your Account Page

3. The Personal Data page displays.
4. Select **Delete**.

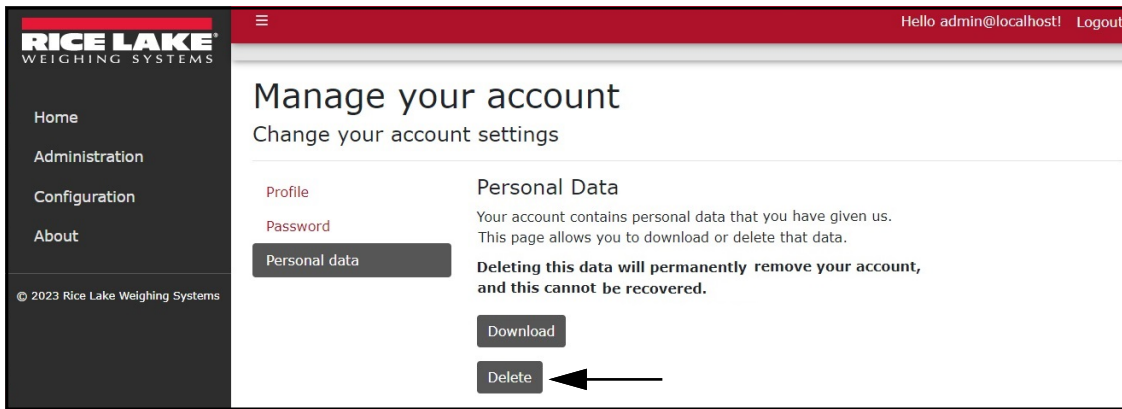


Figure 4-9. Personal Data Page

5. A delete confirmation displays.
6. Enter the account's password then select **Delete data and close my account** to confirm or select the internet browser **Back** button to return to the previous page.

**!** **IMPORTANT:** Account data can not be recovered after deletion.

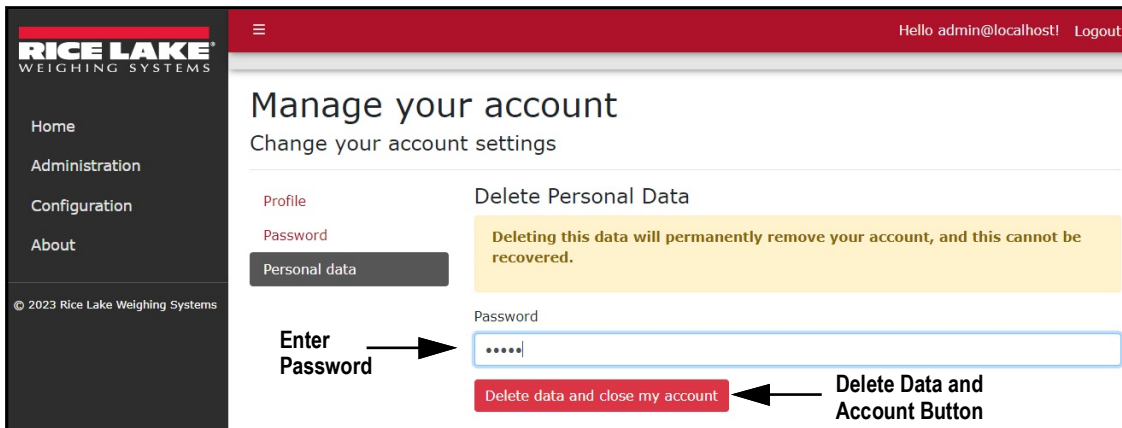


Figure 4-10. Delete Personal Data Page

## 5.0 Administration

Select the Administration menu option to access the administrator page. The Administration page provides the basic functionality to manage users and download log files.



**NOTE:** The Administration page and its functions are only available to RL Web Display administrators.

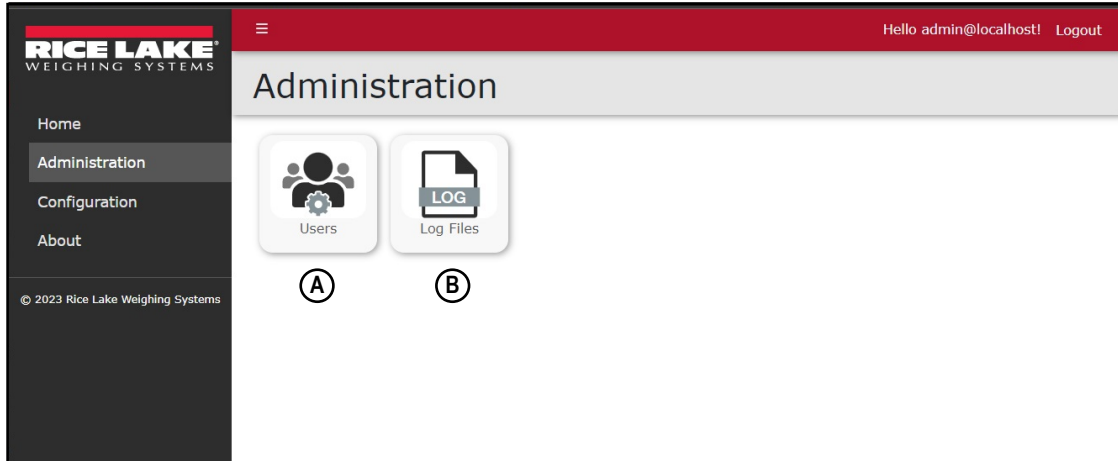


Figure 5-1. Administration Page Elements

Item	Feature	Description
A	Users	Allows an administrator to add ( <a href="#">Section 5.1.2 on page 29</a> ), edit ( <a href="#">Section 5.1.3 on page 30</a> ) or delete users ( <a href="#">Section 5.1.4 on page 31</a> ).
B	Log Files	Opens the Application Logs page. Allows viewing and downloading of log files (see <a href="#">Section 5.2 on page 32</a> )

Table 5-1. Administration Page Elements Described

## 5.1 Users Page

The Users page is accessed by selecting **Users** in the Administration page. The page lists the current users and provides the administrator the functionality to add, edit and delete users.



**NOTE:** The Administration page, sub-pages and functions are only available to RL Web Display administrators.

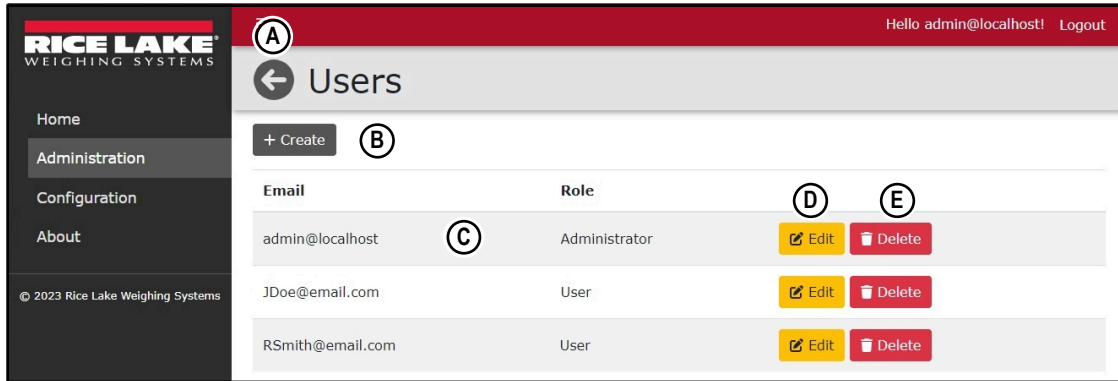


Figure 5-2. Users Page Elements

Item	Feature	Description
A	Back Button	Returns to previous page
B	+ Create Button	Opens the Create User page (see <a href="#">Section 5.1.2 on page 29</a> )
C	Email and Role	Displays the email address and user role
D	Edit Button	Opens the Edit User page (see <a href="#">Section 5.1.3 on page 30</a> )
E	Delete Button	Deletes the user (see <a href="#">Section 5.1.4 on page 31</a> )

Table 5-2. Users Page Elements Described

### 5.1.1 About User Roles

Administrator and User roles are available in RL Web Display. User roles determine permissions granted to each user. [Table 5-3](#) lists Menu access rights granted to each user role.

Category	Administrator	User
Home	X	X
Administration	X	
Configuration	X	
About	X	X

Table 5-3. Role Access Rights

### 5.1.2 User Account Creation

A user account is required to access and use RL Web Display. Perform the following to create a user account:

1. Open Administration page then select **Users**.
2. Select **+ Create**.

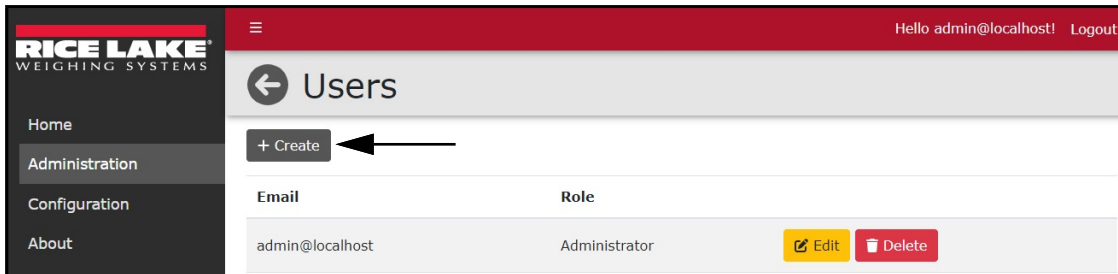


Figure 5-3. Users Page with + Create Function Identified

3. Add Email address, Password and Role.



**NOTE:** Passwords must have at least six characters, one non alphanumeric character (!@#\$%^&\*), one lowercase (a-z) character, one uppercase character (A-Z) and one number (0-9).

4. Select **+ Create**.



**NOTE:** When creating the account, the Administrator must set a user role otherwise access to features is denied (see Section 5.1.3 on page 30).

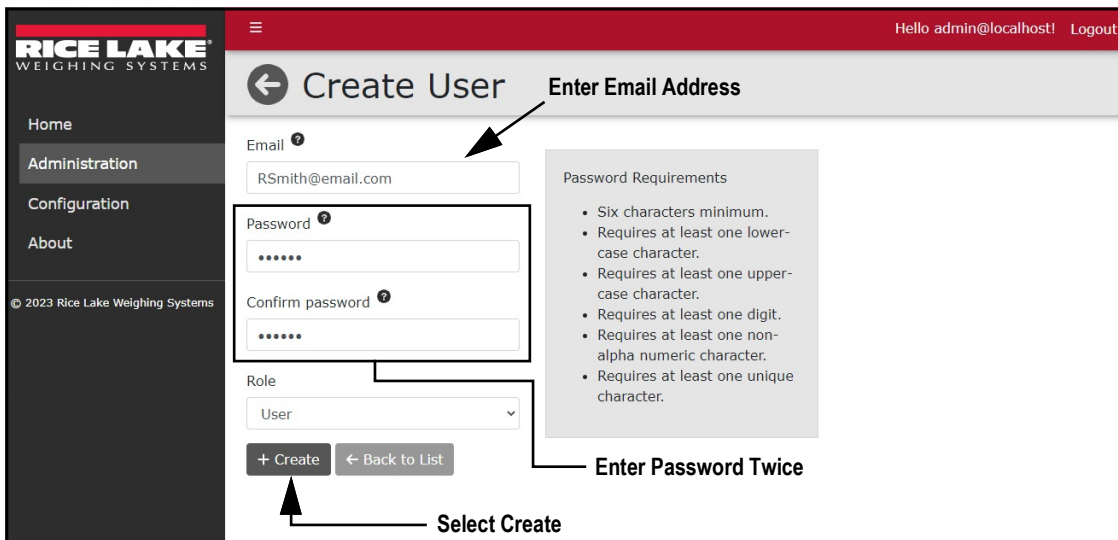


Figure 5-4. Create User Page

5. RL Web Display returns to the Users Page with new user account included in the user list.

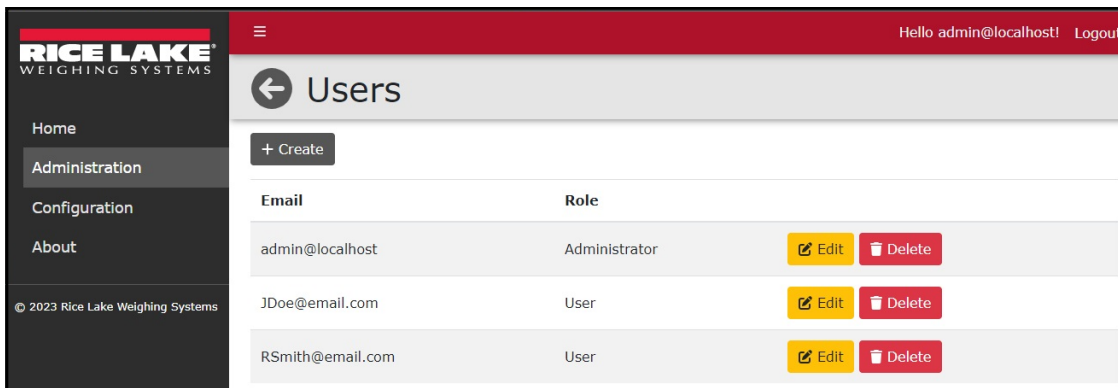


Figure 5-5. Users Page with New User Added

### 5.1.3 Edit Users

To edit a user, perform the following:

1. Open Administration page then select **Users**.
2. Identify the user with a role that requires change then select the associated **Edit** button.

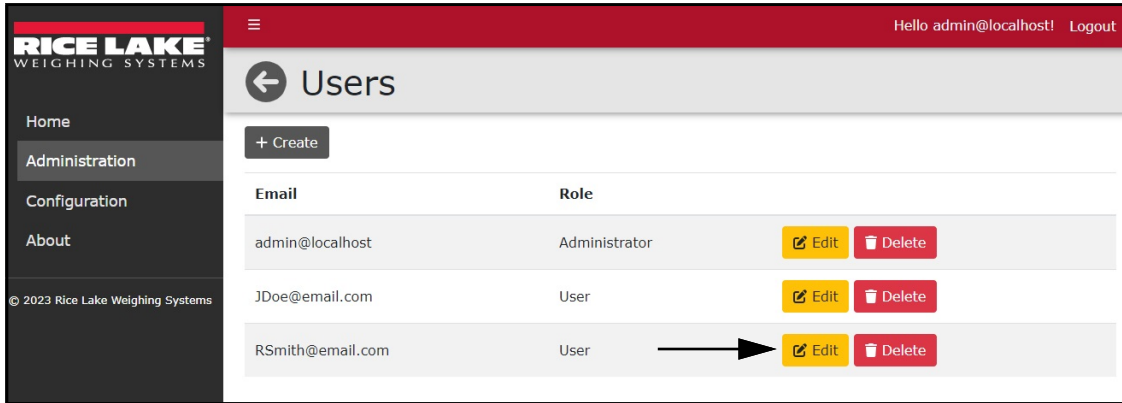


Figure 5-6. Users Page with Edit Function Identified

3. The Edit User page displays.
4. Select the **Role** drop-down menu and then the required option.
5. Select the **Save** button to save changes or **Back to List** button to return to the previous page.



**NOTE:** Users are assigned User roles. See [Section 5.1.1 on page 28](#) for a list of user role permissions.

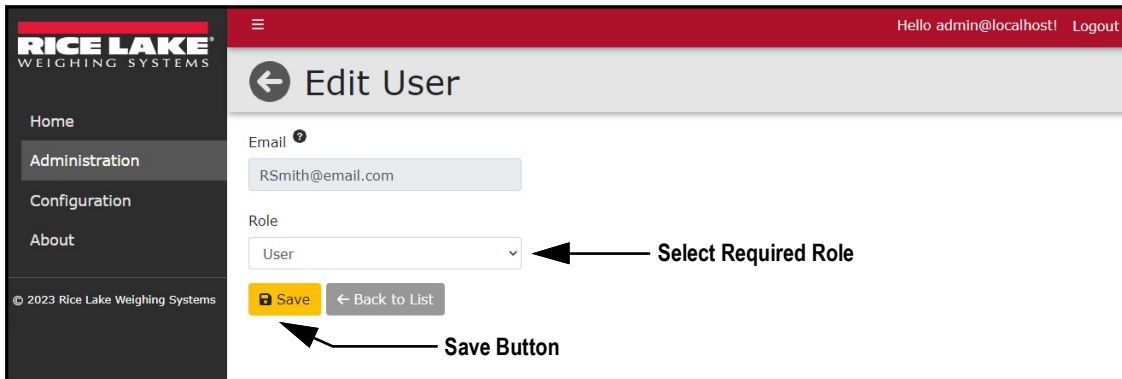


Figure 5-7. Edit User Page

6. If saved, the user role updates to the new configuration.

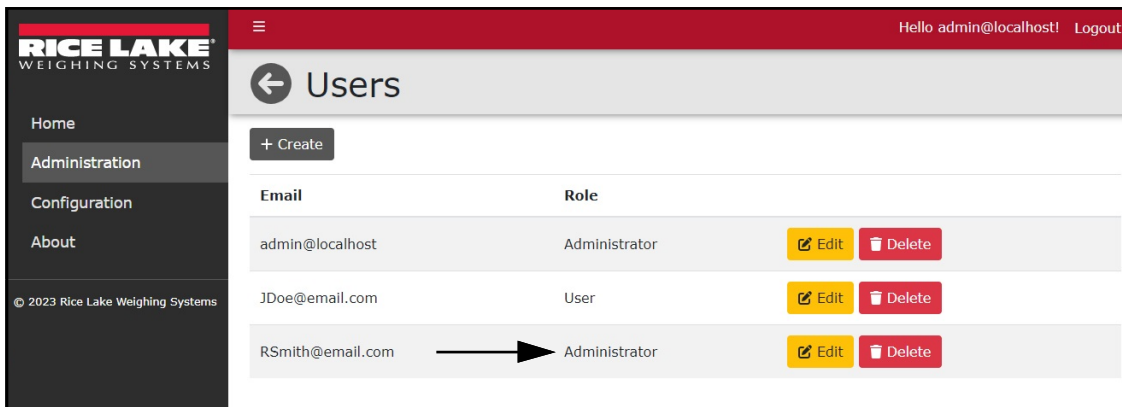


Figure 5-8. User Role Updated

### 5.1.4 Delete Users

Perform the following to delete a user:

1. Open Administration page then select **Users**.
2. Identify the user that requires removal then select the associated **Delete** button.

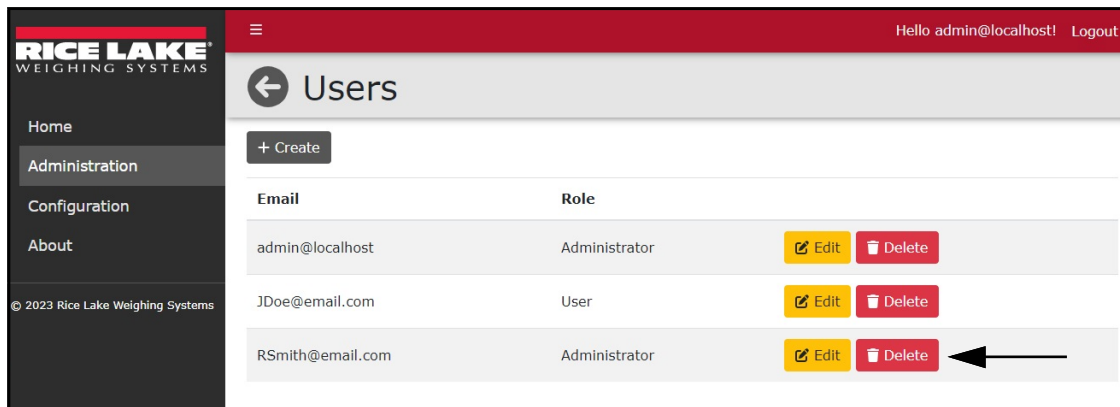


Figure 5-9. Users Page with Delete Identified

3. The system requests confirmation prior to deleting the user.
4. Select the **Delete** button to remove the user.

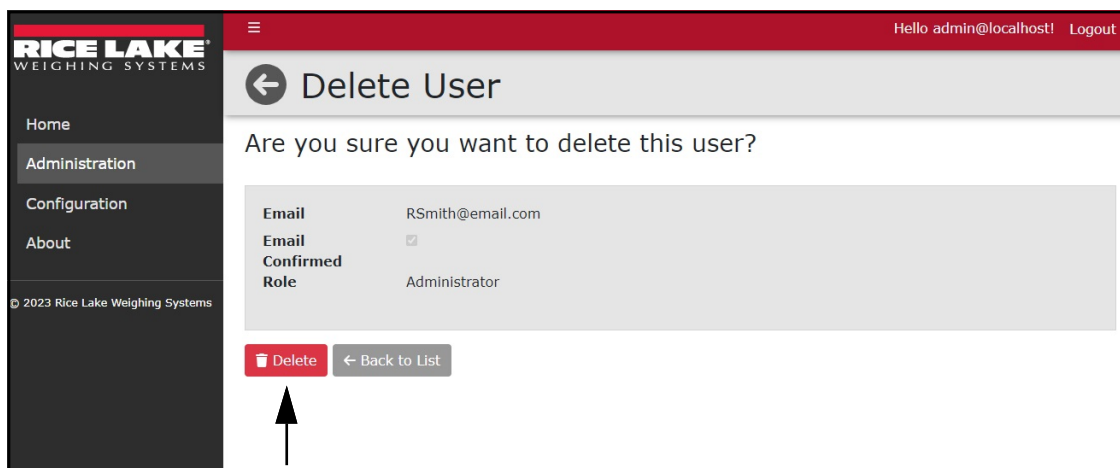


Figure 5-10. Delete User Confirmation Page

5. The Users page displays with the user removed.

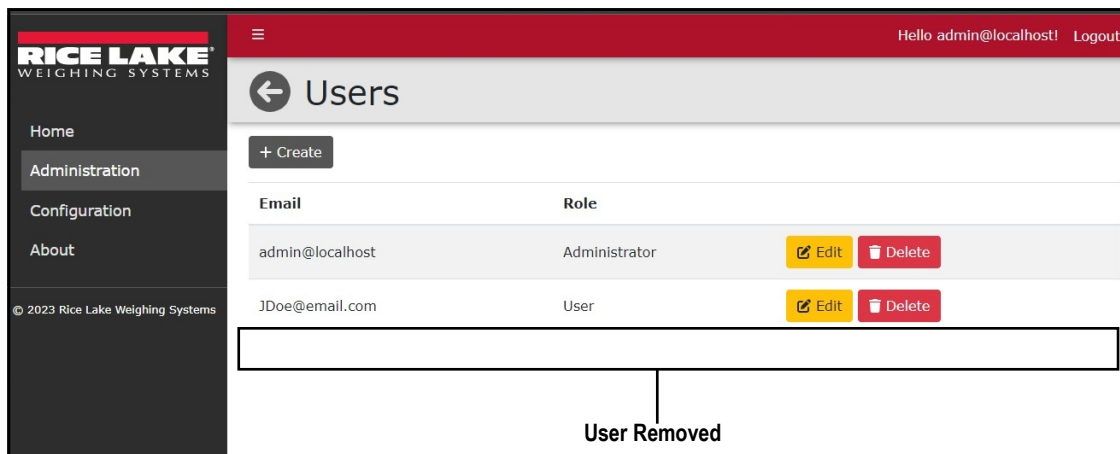


Figure 5-11. User Removed from Users Page

## 5.2 Application Logs Page

The Application Logs page is accessed by selecting **Log Files** in the Administration page. The Application Logs page lists available logs with dates as file names.



**NOTE:** Administration page, sub-pages and functions are only available to RL Web Display administrators.

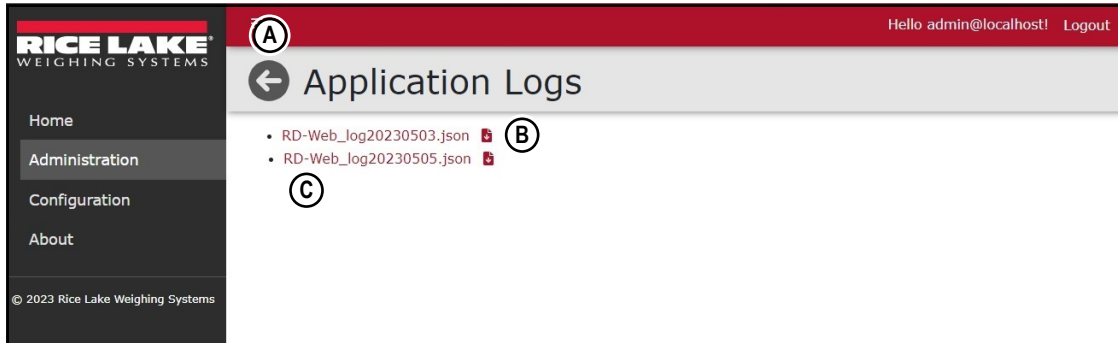


Figure 5-12. Application Logs Page Elements

Item	Feature	Description
A	Back Button	Returns to previous page
B	Download Button	Downloads log file
C	Log File Link	Opens log file in internet browser

Table 5-4. Application Logs Page Elements Described

Application logs are recordings of system interactions typically used by technical support to troubleshoot system issues. Perform the following to view or download log files:



**NOTE:** The log files are in JavaScript Object Notation (\*.json) file format.

1. Open the Administration page then select **Application Logs**.
2. The Application Logs page displays.
3. Select the log link to display it in the internet browser or the download button to save to local storage.



**NOTE:** The installed internet browser and its configuration determines the behavior when downloading the application log. The internet browser may automatically download the log, open the Save As window, or request if the file should be downloaded.

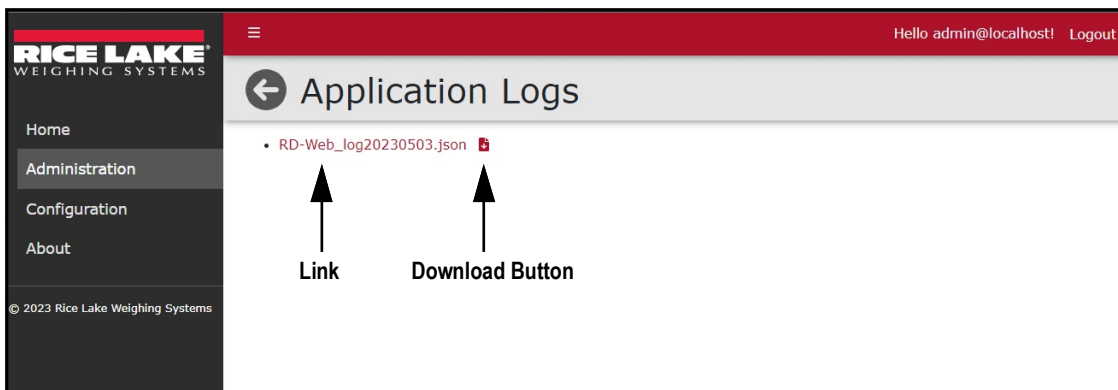


Figure 5-13. Application Logs Page



## 6.0 Application Configuration

Select the Configuration menu option to access the Configuration page. The Configuration page provides access to the Indicators page. The Indicators page provide configuration functions for Indicators, Scales and Remote Displays.



**NOTE:** The Configuration menu is only available when logged in as an Administrator.

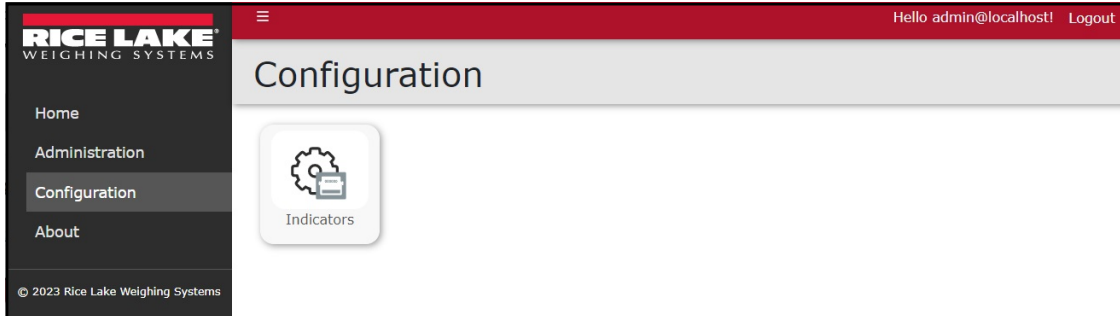


Figure 6-1. Configuration Page Elements

### 6.1 Indicator Configuration

The Indicators page is accessed by selecting **Indicators** in the Configuration page. The Indicators page lists indicators connected to RL Web Display and provides functionality to add, delete, or configure indicators.



**NOTE:** Configuration page, sub-pages and functions are only available to RL Web Display administrators.

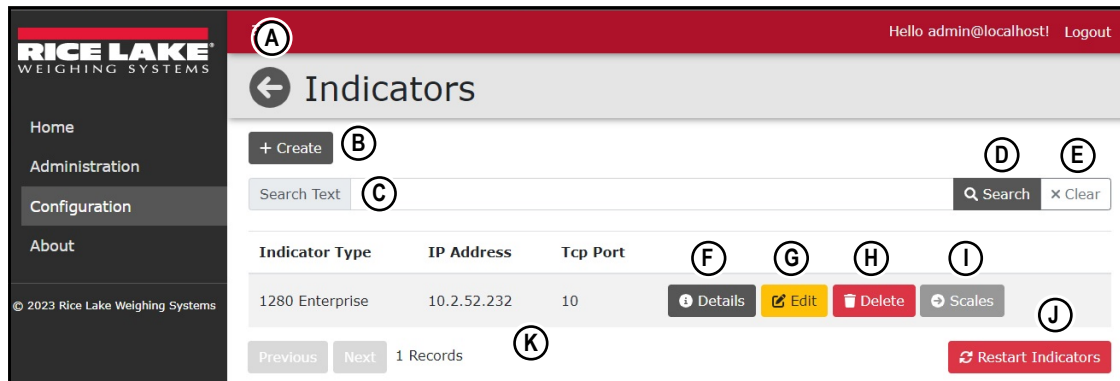


Figure 6-2. Indicators Page Elements

Item	Feature	Description
A	Back Button	Returns to previous page
B	+ Create Button	Opens Create Indicator page (see <a href="#">Section 6.1 on page 33</a> )
C	Search Text Field	Provides text field to enter search terms
D	Search Button	Executes search function
E	Clear Button	Clears Search field
F	Details Button	Opens Indicator Details page (see <a href="#">Section 6.5 on page 38</a> )
G	Edit Button	Opens Edit Indicator page (see <a href="#">Section 6.6 on page 39</a> )
H	Delete Button	Opens Delete Indicator page (see <a href="#">Section 6.7 on page 42</a> )
I	Scales Button	Opens Indicator Scales page (see <a href="#">Section 6.2 on page 35</a> )
J	Restart Indicators Button	Opens Restart Indicators page (see <a href="#">Section 6.4 on page 37</a> )
K	Configured Indicator Information	Displays indicator and connection information

Table 6-1. Indicators Page Elements Described

### 6.1.1 Indicator Configuration

1. Select **Indicators** from the Configuration page. The Indicators page displays.
2. Select the **+ Create** button.

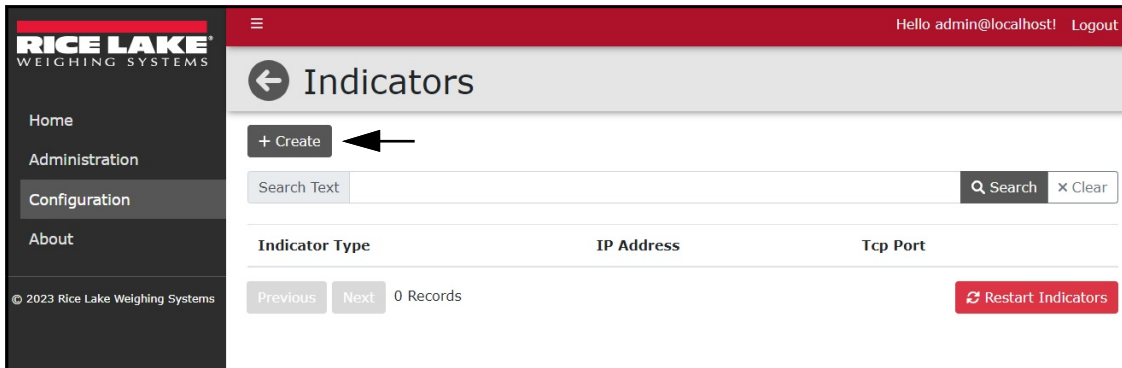


Figure 6-3. Indicators Page + Create Button

3. The Create Indicator page displays.
4. Configure the following parameters:
  - **Indicator Type:** Select the indicator type from the drop-down menu.
  - **IP Address:** Enter the IP address assigned to assigned to the indicator.
  - **TCP Port:** Enter the TCP Port assigned to the indicator.
5. Select **+ Create**.

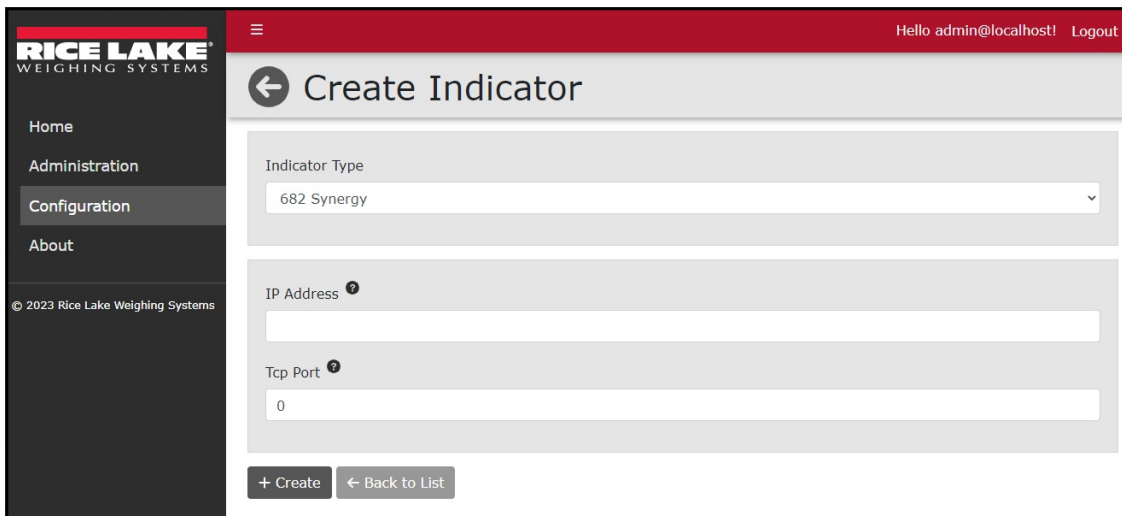


Figure 6-4. Create Indicator Page

6. The Indicators page displays with the new Indicator listed.

## 6.2 Scales Configuration

After an indicator is configured, a scale must be added to it:

1. Select **Indicators** from the Configuration page. The Indicators page displays.
2. Select **Scales** associated with the indicator that will be assigned a scale.

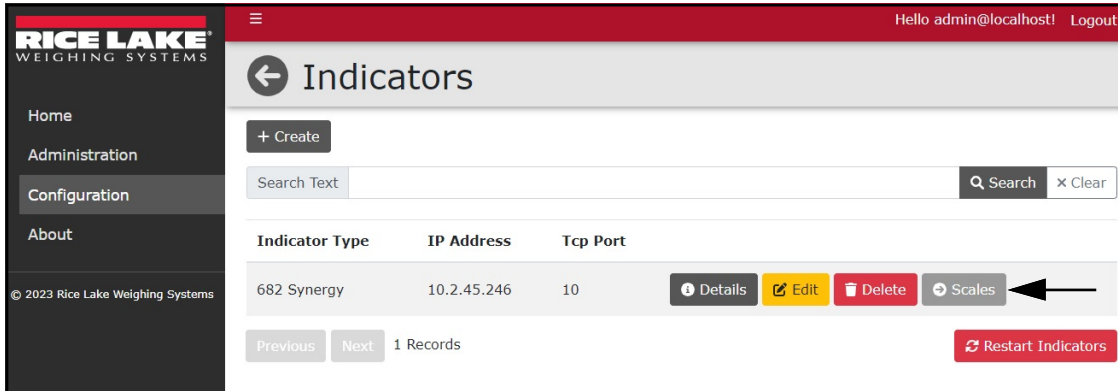


Figure 6-5. Indicators Page Scales Button

3. The Indicator Scales page appears.
4. Select **+ Create**.

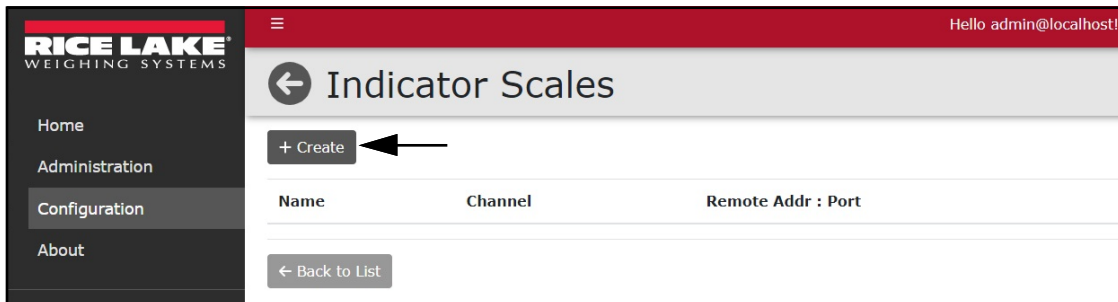


Figure 6-6. Indicator Scales + Create Button

5. The Add Scale to Indicator pop-up window appears.
6. Configure the following parameters:
  - **Scale Name**: Enter the desired name for scale.
  - **Channel**: Enter the indicator channel number.
7. Select **Add**.

Add Scale to Indicator ✕

Scale Name

Channel

Figure 6-7. Add Scale to Indicator Pop-Up Window

- The pop-up window closes and the new scale is displayed in the Indicator Scales page.

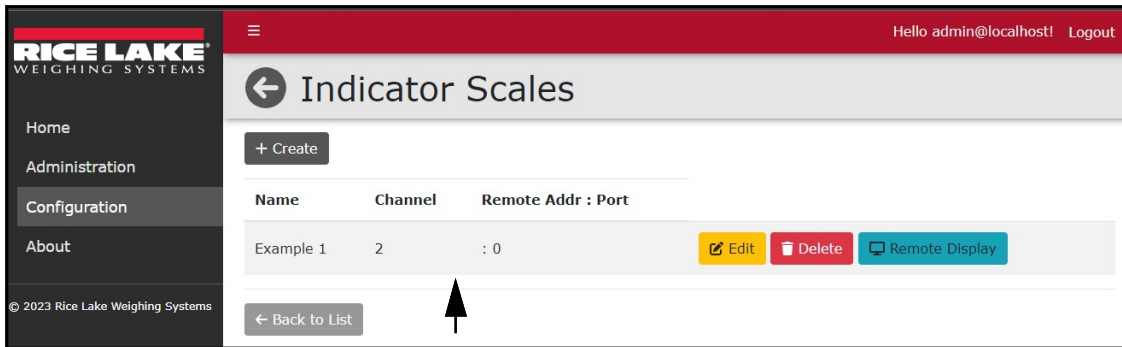


Figure 6-8. Indicator Scales Page

### 6.3 Remote Display Configuration

If a remote display is available it may be added to a scale it is connected to:

- Select **Indicators** from the Configuration page. The Indicators page displays.
- Select **Scales** associated with the indicator that will be assigned a remote display. The Indicator Scales page displays.
- Select **Remote Display** from the scale.

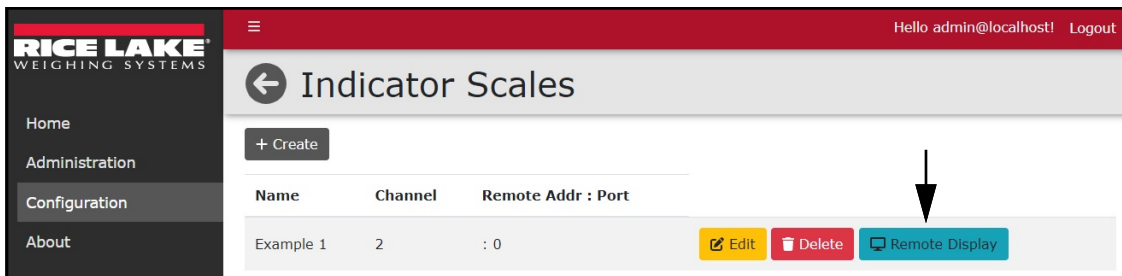


Figure 6-9. Scales Remote Display Button

- The Edit Remote Display window opens.
- Configure the following parameters:
  - IP Address:** Enter the IP address assigned to the remote display.
  - TCP Port:** Enter the TCP Port assigned to the remote display.
  - Remote Display Kind:** Select the type of remote display from the drop-down menu.



**NOTE:** The Remote Display Kind parameter configures the remote display protocol. LaserLight3 supports LaserLight2 and LaserLight3 protocols, while LaserLight2 supports LaserLight2 protocol.

- Select **Save** (see Figure 6-10 on page 36).

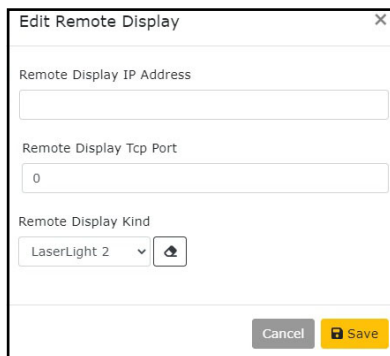


Figure 6-10. Edit Remote Display Window

- The remote display IP address and TCP port appears in the line item.

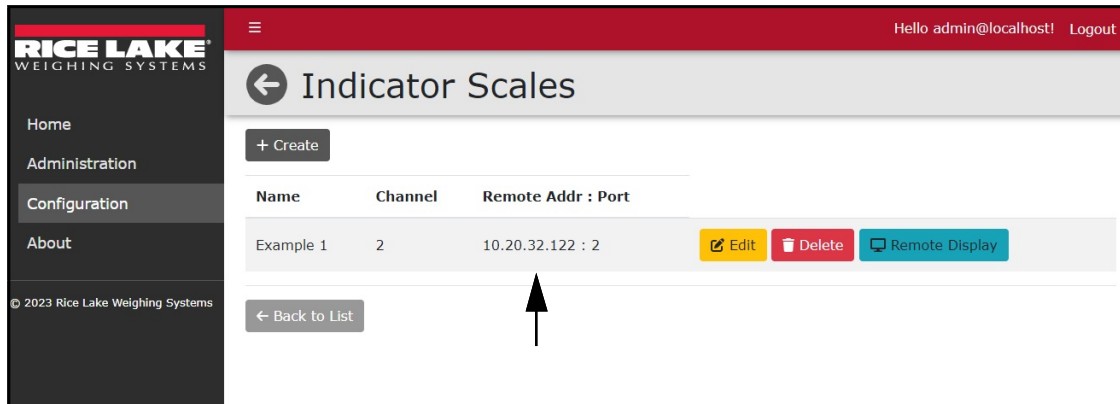


Figure 6-11. Indicator Scales Page with Remote Display Information

## 6.4 Restart All Indicator Connections

- Select **Indicators** or **Units** in the Configuration menu.

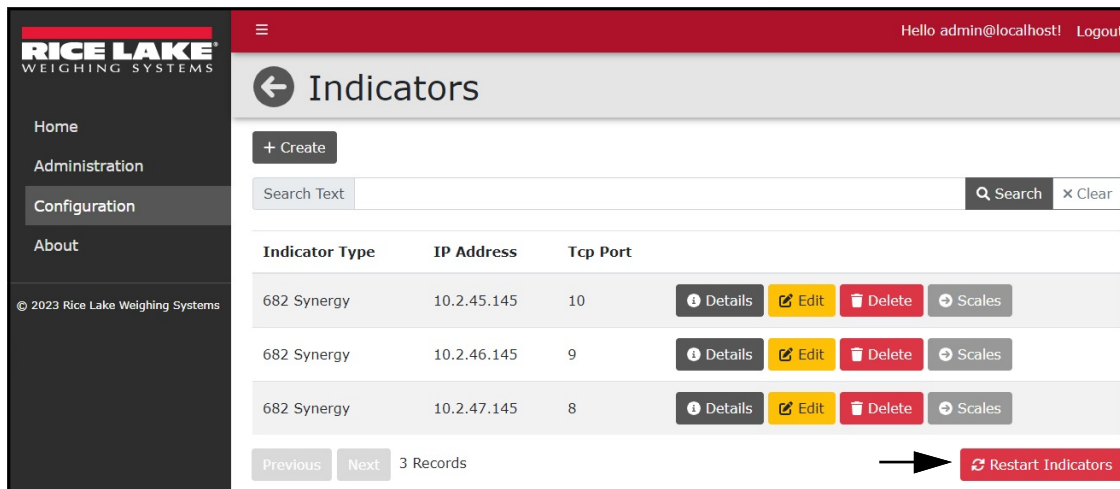


Figure 6-12. Indicators Page Restart Indicators Button

- Select **Restart Indicators**.
- The Restart Indicators page displays.
- Select **Restart** to continue.



**NOTE:** When restarting indicators, weighing operations will be inhibited for a short period of time.

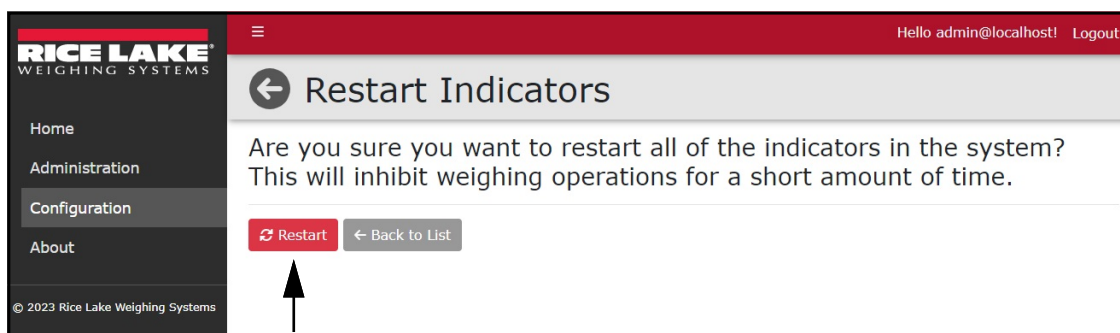


Figure 6-13. Restart Indicators Page

## 6.5 View Indicator Details

The Details function opens a new page that lists additional details about the Indicator.

1. Select the **Indicators** page from the Configuration menu.
2. Select the **Details** button for the Indicator that will be viewed.

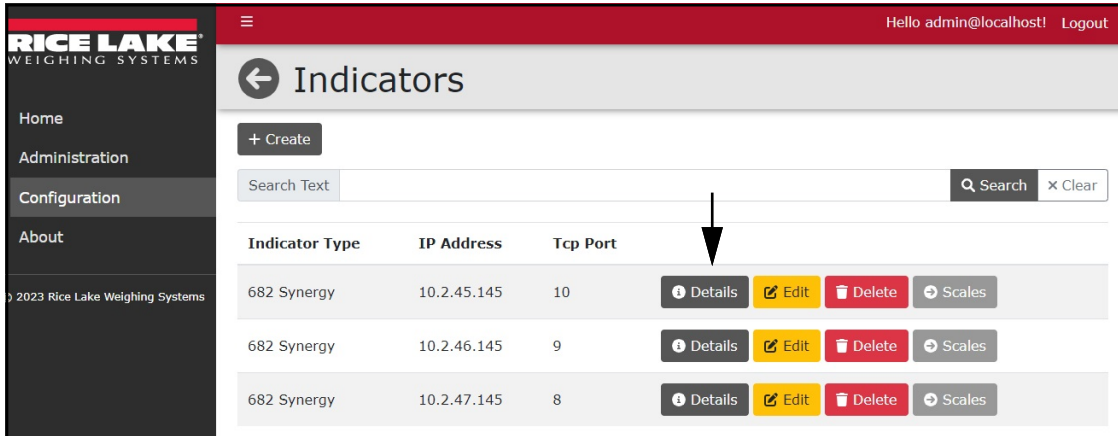


Figure 6-14. Details Button

3. (Optional) Select **Edit** to open a edit page and edit parameters as required (see [Section 6.6.1 on page 39](#)).

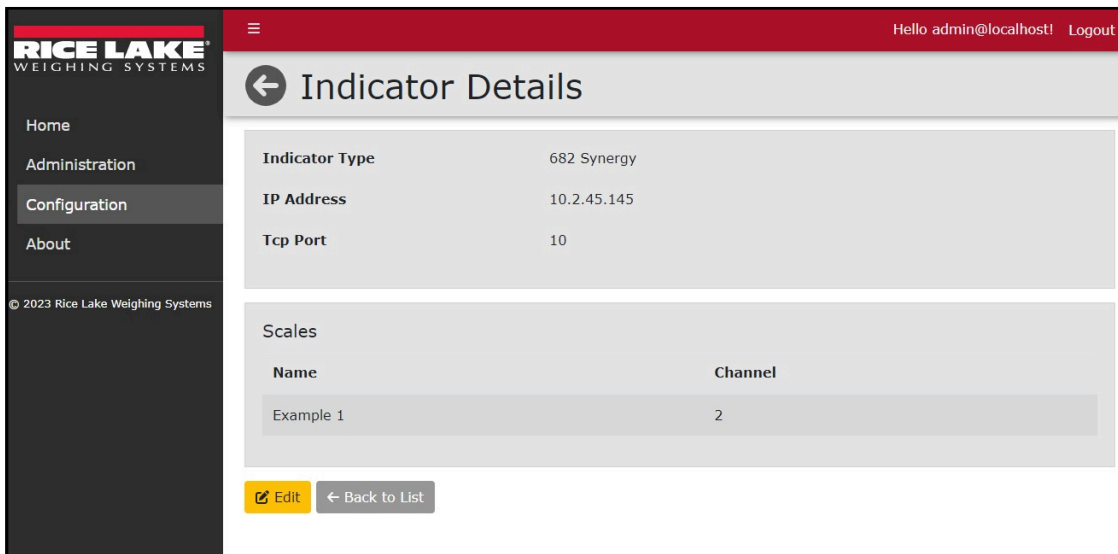


Figure 6-15. Details Page

4. Select **Back to List** to return to the previous page.

## 6.6 Edit Indicators, Scales, and Remote Displays

The edit function allows to update parameters for indicators, scales and remote displays.

### 6.6.1 Edit Indicators

1. Select Indicators from the Configuration menu. The Indicators page displays.
2. Select the **Edit** button for the Indicator that requires change.

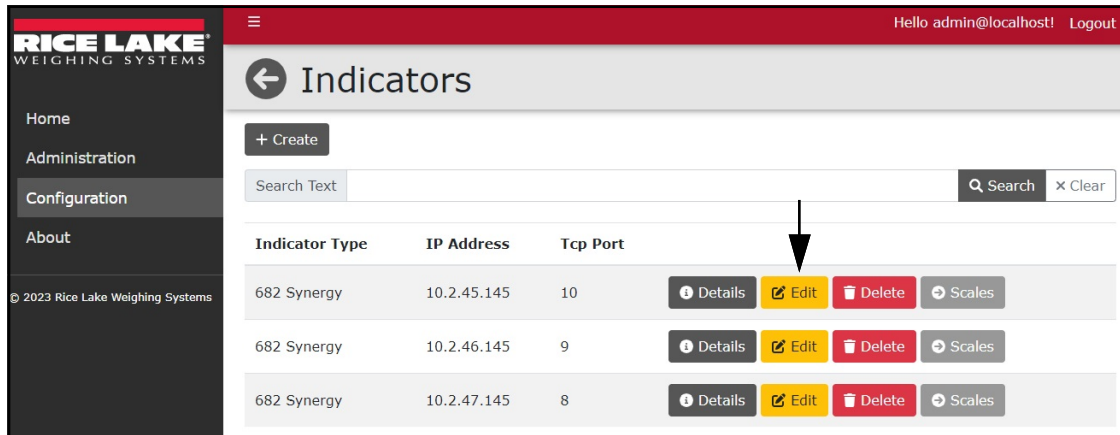


Figure 6-16. Edit Button

3. The Edit Indicator page appears.
4. Edit parameters as required.
5. Select **Save** to apply changes.

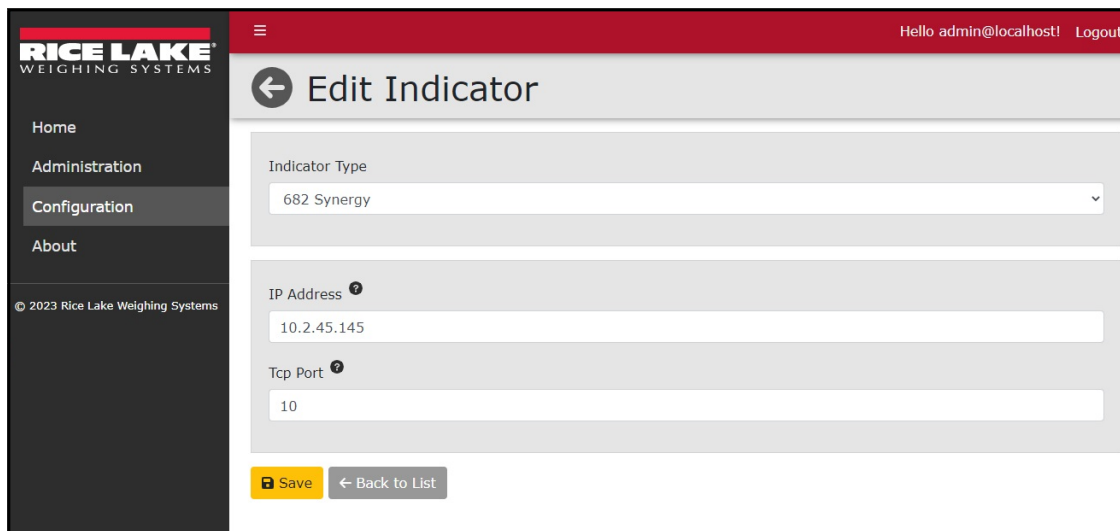


Figure 6-17. Edit Page

6. The previous page displays.

### 6.6.2 Edit Scales

1. Select Indicators from the Configuration menu. The Indicators page displays.
2. Select **Scales** for the indicator that contains the scale requiring change.

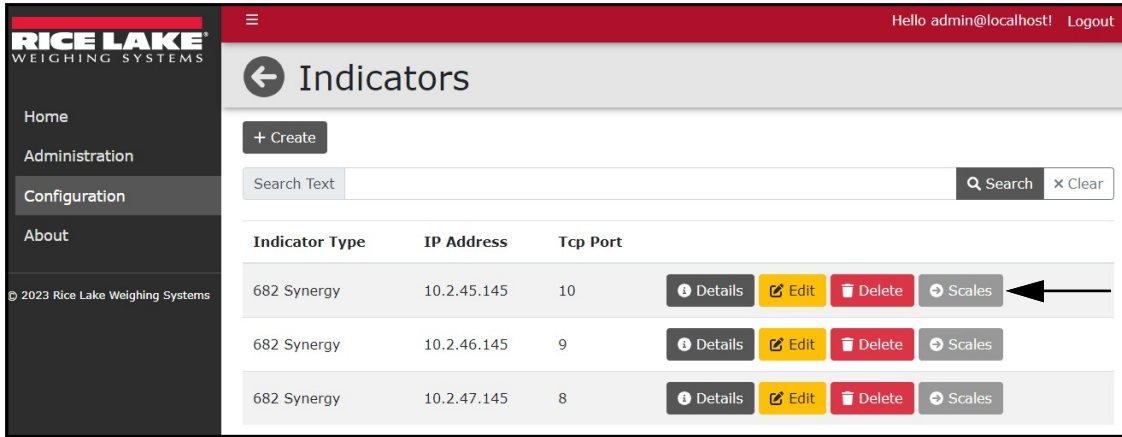


Figure 6-18. Scales Button

3. The Indicator Scales page displays.
4. Select the **Edit** button for the scale that requires change.

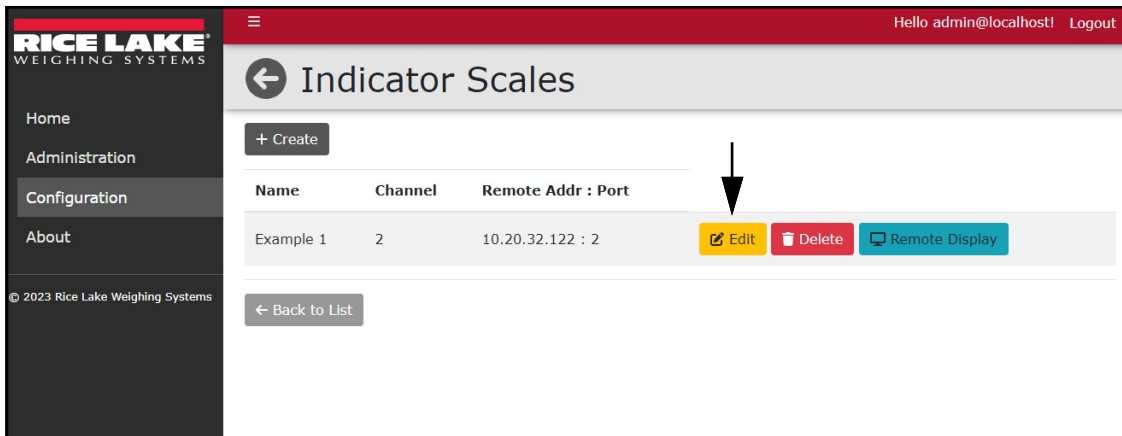


Figure 6-19. Edit Button

5. The Edit Scale pop-up window displays.
6. Edit parameters as required.
7. Select **Save** to apply changes.

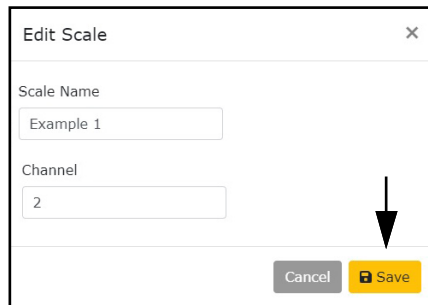


Figure 6-20. Edit Page

8. The previous page displays.



6.6.3 Edit Remote Displays

- 1. Select **Indicators** from the Configuration menu. The Indicators pages displays.
- 2. Select **Scales** for the indicator that contains a remote display requiring change.

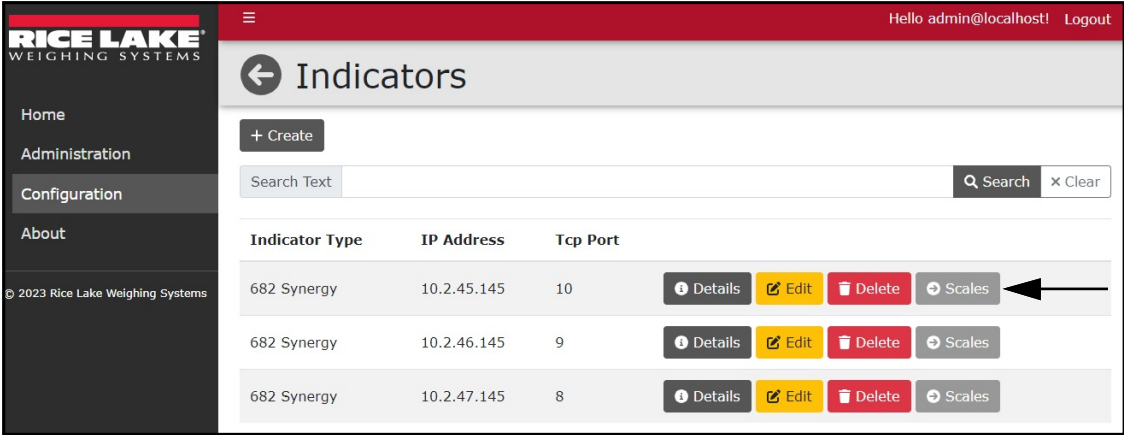


Figure 6-21. Scales Button

- 3. The Indicator Scales pages displays.
- 4. Select the **Edit** button for the remote display that requires change.

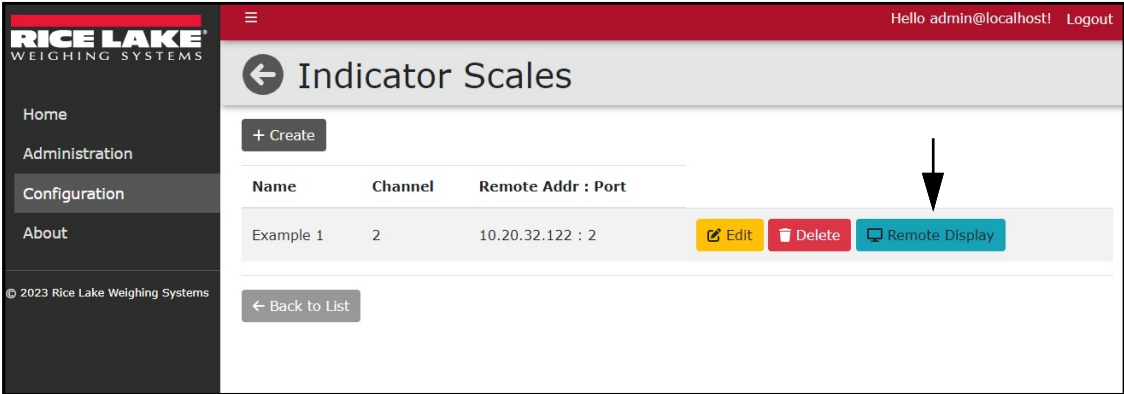


Figure 6-22. Edit Button

- 5. The Edit Remote Display pop-up window appears.
- 6. Edit parameters as required.
- 7. Select **Save** to apply changes.

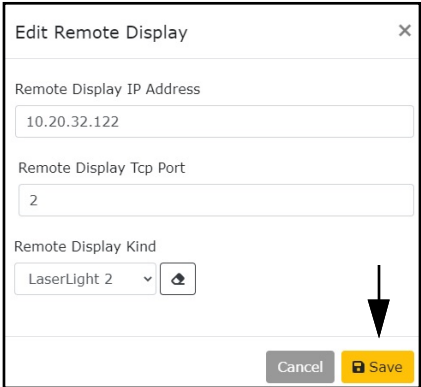


Figure 6-23. Edit Page

- 8. The previous page displays.

## 6.7 Delete Indicators, Scales and Remote Displays

The Delete function removes an Indicator or a Scale from the system. An erase function is provided for remote displays, this provides an end result similar to a delete function.

### 6.7.1 Delete Indicators

1. Select Indicators from the Configuration menu. The Indicators page displays.
2. Select the **Delete** button associated with the Indicator that requires deletion.

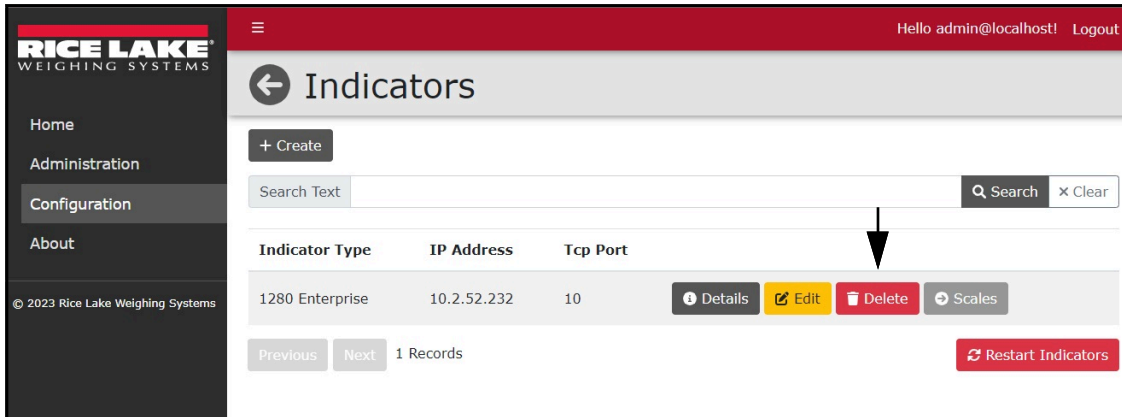


Figure 6-24. Delete Button

3. The Delete Indicator page displays.
4. Select **Delete** to confirm.

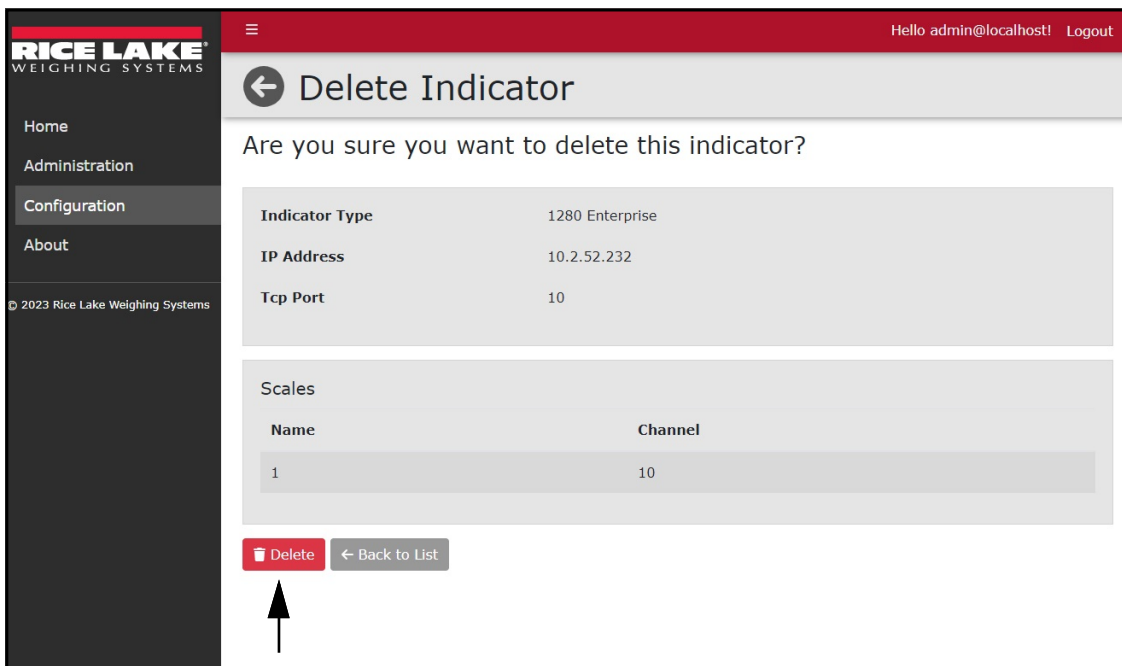


Figure 6-25. Delete Page

5. The Indicators page displays with the indicator removed.

## 6.7.2 Delete Scales

1. Select Indicators from the Configuration menu. The Indicators page displays.
2. Select **Scales** for the indicator that contains a scale requiring deletion.

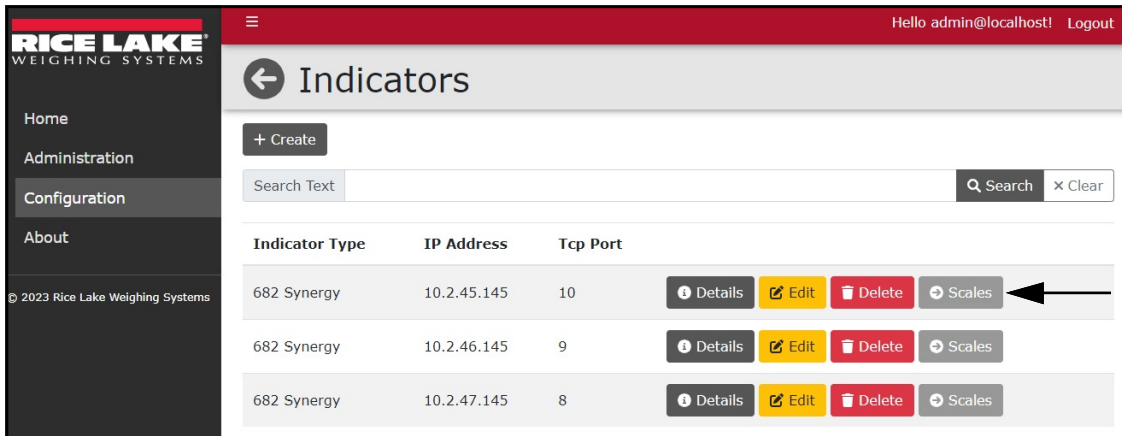


Figure 6-26. Scales Button

3. The Indicator Scale page displays.
4. Select the **Delete** button for scale that requires removal.

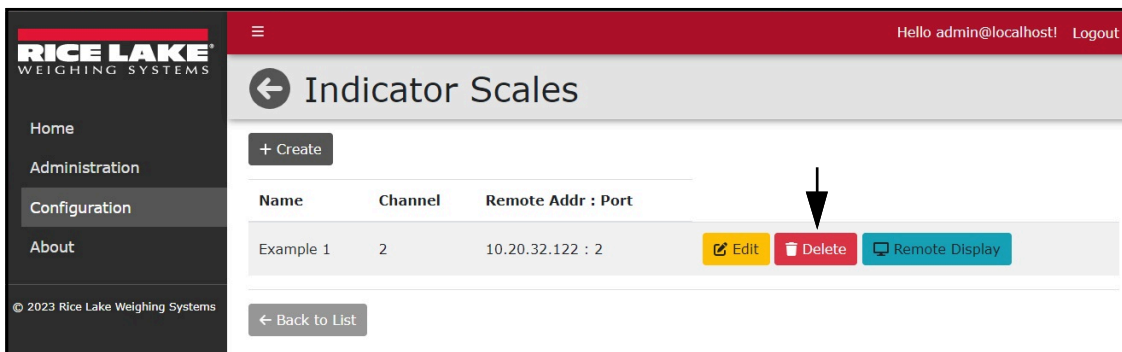


Figure 6-27. Delete Button

5. The Remove Scale page displays.
6. Select **Delete** to confirm.

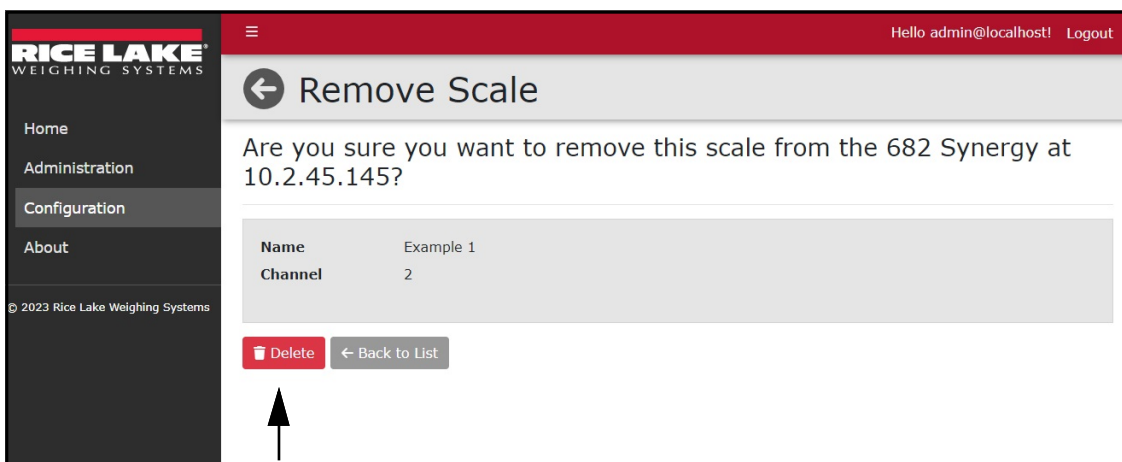


Figure 6-28. Remove Scale Page

7. The Indicator Scales page displays with the scale removed.

### 6.7.3 Delete Remote Displays

The Edit Remote Displays pop-up windows provides an erase function that removes all parameters values from a configured remote display. If save is selected after the erase button, the remote display configuration is removed from a scale.

1. Select Indicators from the Configuration menu. The Indicators page displays.
2. Select **Scales** for the indicator that contains a remote display requiring removal. The Indicator Scales page displays.
3. Select **Remote Display** from the scale that requires it removal.

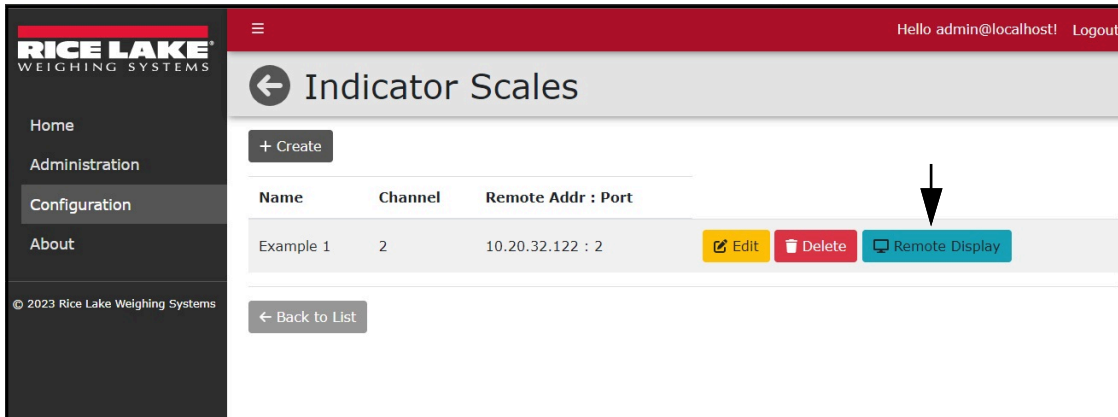


Figure 6-29. Delete Button

4. The Edit Remote Display page displays.
5. Select the **Erase** button to remove the IP Address and change the Tcp Port value to 0.
6. Select **Save** to apply the changes.

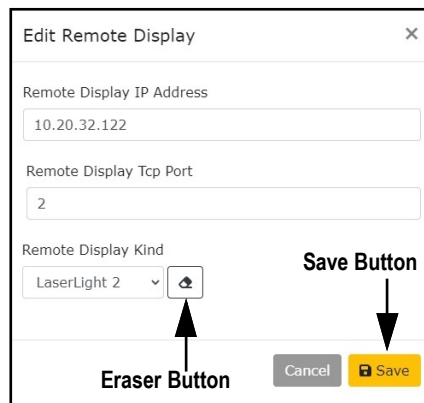


Figure 6-30. Delete Page

7. The Indicator Scales page displays with the remote display configuration removed.





© Rice Lake Weighing Systems Content subject to change without notice.

230 W. Coleman St. • Rice Lake, WI 54868 • USA  
U.S. 800-472-6703 • International +1 715-234-9171