

RL75016

Alloy Steel, Environmentally Sealed, IP67



Picture is a representation of actual product.

Approvals



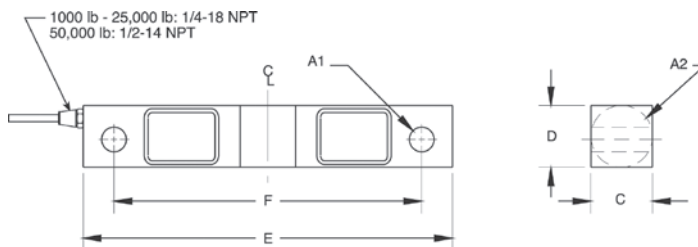
Order Information

Load Rating	Part #	Est. Weight	Price
1,000 lb	17300	4 lb	Consult
1,500 lb	17302	4 lb	Consult
2,000 lb	17304	4 lb	Consult
2,500 lb	17306	4 lb	Consult
3,000 lb	17308	4 lb	Consult
5,000 lb	17309	4 lb	Consult
10,000 lb	17311	7 lb	Consult
15,000 lb	17313	7 lb	Consult
20,000 lb	17315	7 lb	Consult
25,000 lb	17317	7 lb	Consult
50,000 lb	17319	25 lb	Consult
75,000 lb*	25357	25 lb	Consult

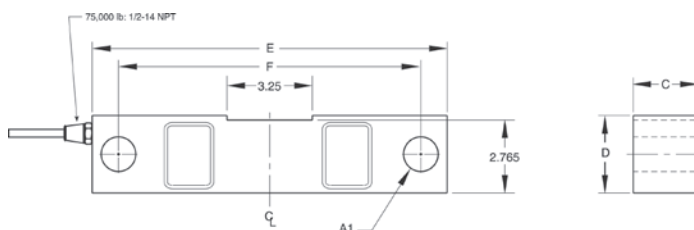
*75,000lb capacity has a square center

Dimensions

Rated Capacity	A1	A2	C	D	E	F
lb/in						
1,000 to 5,000	0.50	1.25	1.25	1.25	7.50	6.25
10,000 to 25,000	0.81	1.99	1.44	1.94	8.75	7.50
50,000	1.31	3.00	2.44	2.94	13.50	11.50
75,000	1.31	—	2.44	2.94	13.50	11.50



1000-50,000lb



75,000lb

Interchangeable Products

VPG® CELTRON

DSR.....page 209

VPG® SENSORTRONICS®

65016.....page 306

VPG® REVERE

5203

Weigh Module Available

RICE LAKE WEIGHING SYSTEMS

RL1600 Series .page 79 and page 81

Specifications

Full Scale Output:

3.0 mV/V

Output Resistance:

700 (± 5) ohm

Input Resistance:

770 (± 10) ohm

Material/Finish:

High-alloy steel, nickel plated

Temperature:

Operating range
0 °F to 150 °F (-18 °C to 65 °C)

Seal Type:

Environmentally sealed, IP67

Safe Overload:

150% full scale

Safe Sideload:

100% full scale

Rated Excitation:

5 to 10 VDC (15 V maximum)

Nonlinearity:

0.03% full scale

Hysteresis:

0.02% full scale

Deflection at Capacity:

1,000 to 3,000 lb: 0.01 in
5,000 lb: 0.015 in
10,000 to 20,000 lb: 0.022 in
25,000 lb: 0.036 in
50,000 lb: 0.052 in
75,000 lb: 0.07 in

Insulation Resistance:

5,000 megohm

Cable Length:

25 ft

Cable Diameter:

1,000 to 25,000 lb: 0.200 in
50,000 to 75,000 lb: 0.305 in Polyurethane jacket

Cable Color Code:

Red +Excitation
Black -Excitation
Green +Signal
White -Signal

Warranty:

Two-year limited