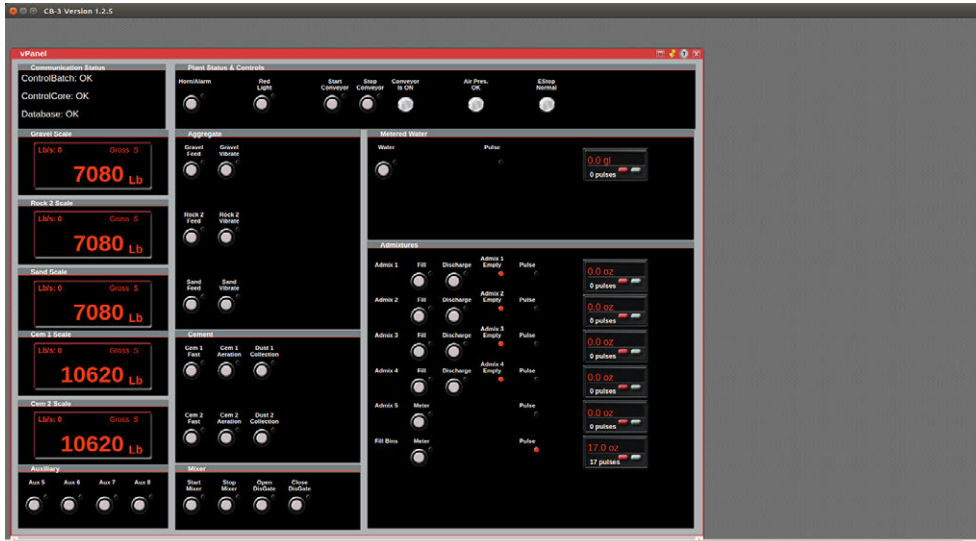


CB-3 Concrete Batch Controller

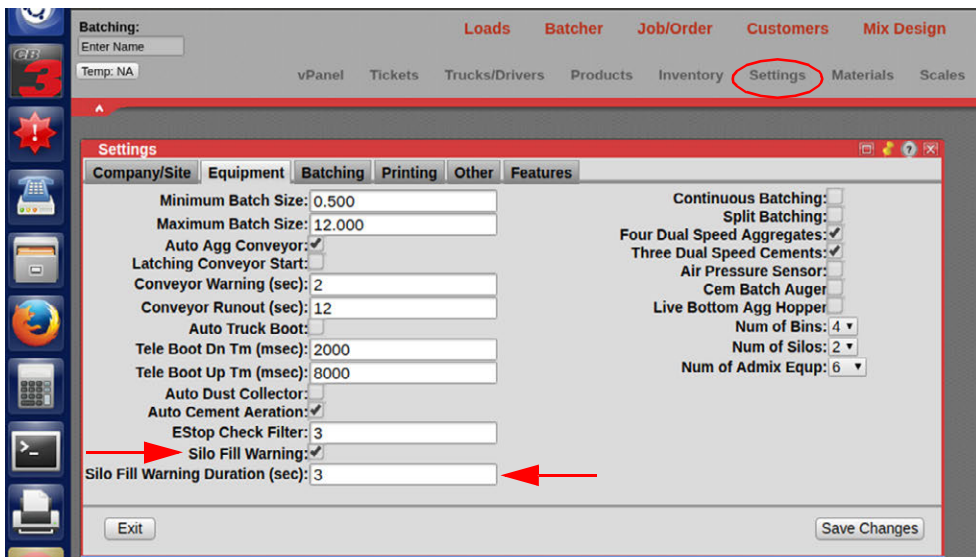
Decumulative Cement Silo Scale High Level Alarm

This document describes enabling and configuring the automatic decumulative silo scale alarm on the CB3. The vPanel displays as follows when the **Silo Fill Warning** is not enabled.



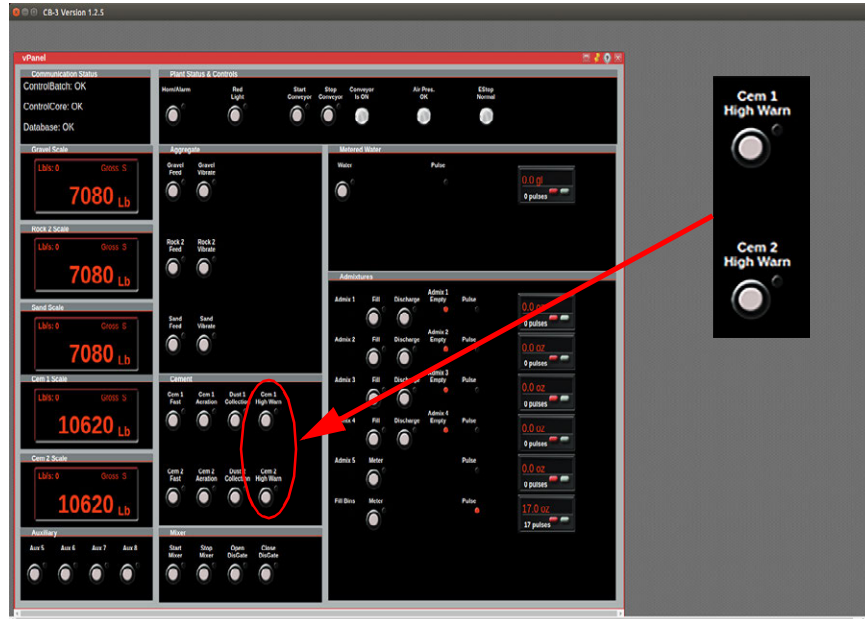
To enable the **Silo Fill Warning**:

1. Click on **Settings**.
2. Click on the **Equipment** tab, then click to check the box next to **Silo Fill Warning**.
3. Enter the desired warning time (default 3 seconds) in the **Silo Fill Warning Duration** field.
4. Click on **Save Changes** and then click on **Exit**.



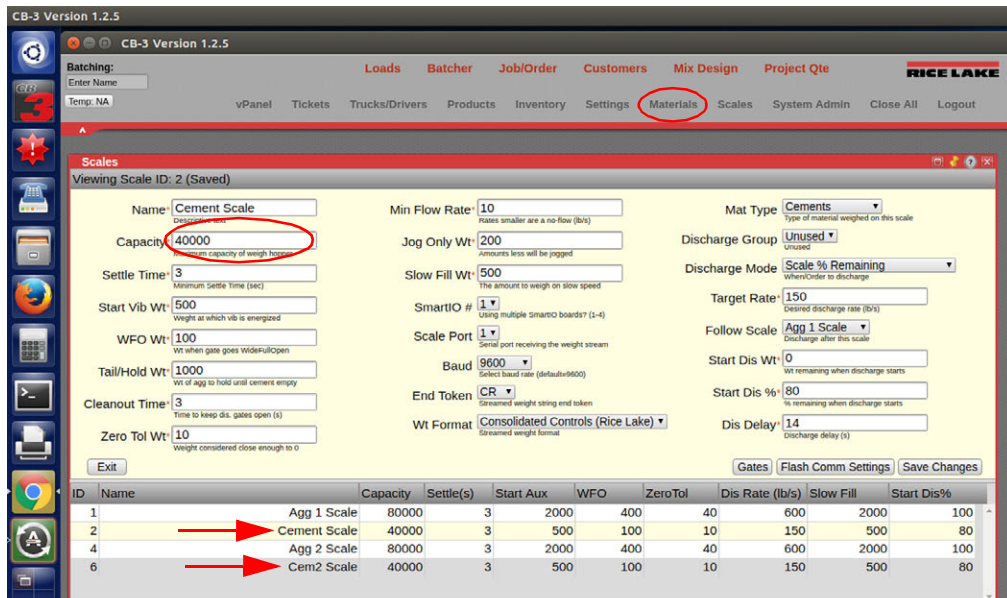


Reopening the vPanel now displays the Cem 1 High Warn and Cem 2 High Warn.

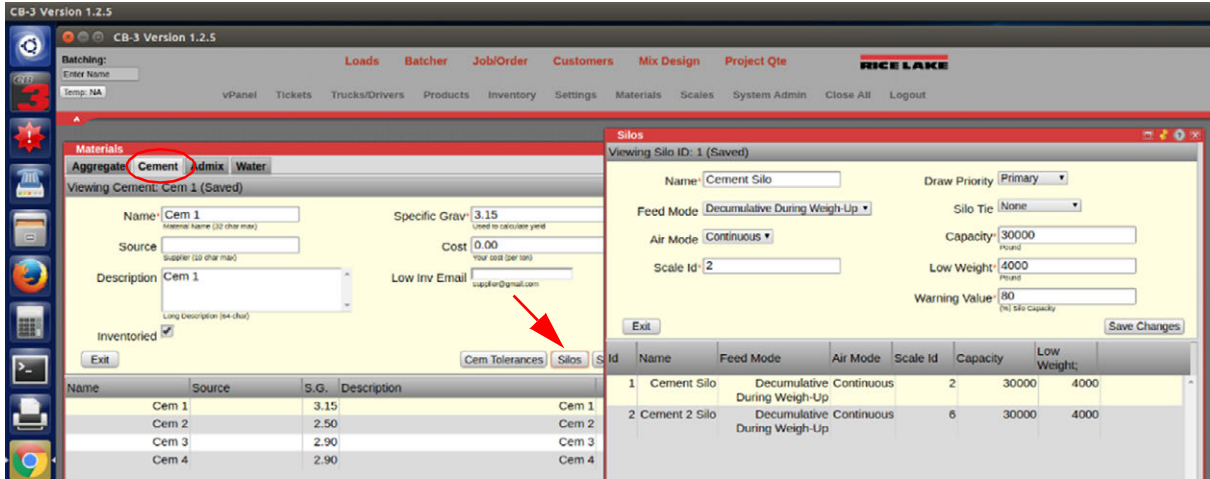


The warning is activated according to percentage of the scale capacity. The scale capacity is located in the Scales menu and should match the maximum capacity the scale has been calibrated for.

5. Open the scales menu.
6. Record the capacity for each cement scale.
7. Click on **Materials**.



- Click on the **Cement** tab and then click on **Silos**.



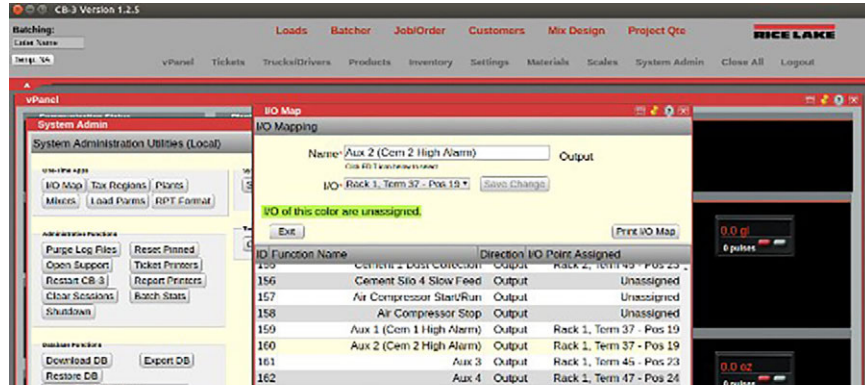
- For each silo, set the capacity to match its scale capacity. Enter desired percent value for when the warning turns on.
For example: if the scale capacity is 40,000 lb and the warning value is set for 80%, the warning activates when the cement level reaches 32,000 lb.
- Click on **Save Changes** and close the **Silo** and **Materials** menus.

The following example displays an active alarm on the vPanel with a 40,000 lb scale capacity and an 80% warning value for each silo.



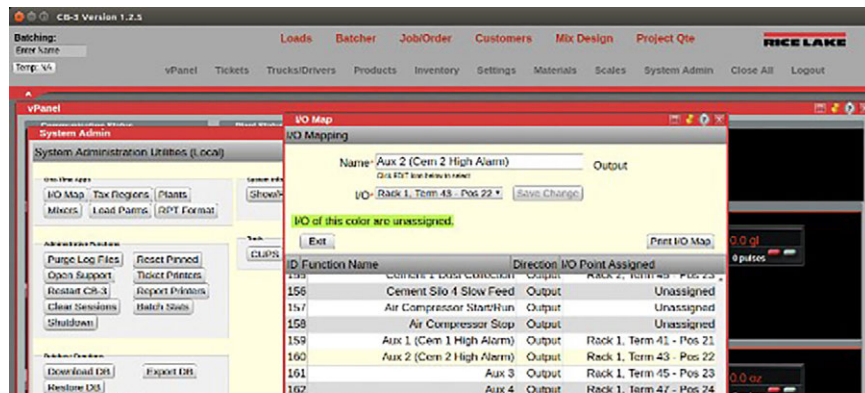
To configure existing horn as silo high alarm:

1. Click on **System Admin**.
2. Click on **I/O Map**.
3. Scroll down and change **Aux 1** and **Aux 2** to **Rack 1, Term 37, Pos 19** for the IO assignment.
4. Click **Save Changes** after each one is changed.



To configure corresponding relay outputs for individual alarms:

1. Click on **System Admin**.
2. Click on **I/O Map**.
3. Scroll down and change the **IO** point assignment of **Aux1** to **Rack 1, term 41, Pos 21**.
4. Click **Save Changes**.
5. Change the **IO** point assignment of **Aux 2** to **Rack 1, Term 43, Pos 22**.
6. Click **Save Changes**.



© Rice Lake Weighing Systems Specifications subject to change without notice.
Rice Lake Weighing Systems is an ISO 9001 registered company.

230 W. Coleman St. • Rice Lake, WI 54868 • USA
U.S. 800-472-6703 • Canada/Mexico 800-321-6703 • International 715-234-9171 • Europe +31 (0)26 472 1319