

ELS Series

ELEVATED LOAD CELL STANDS



RICE LAKE[®]
WEIGHING SYSTEMS

800-472-6703

www.ricelake.com

ELS Series

ELEVATED LOAD CELL STANDS

Rice Lake Weighing Systems' ELS Series elevated load cell stands are made to replace existing supports on a conveyor to convert it into a scale.

Infinite Possibilities

ELS Series elevated load cell stands are a low-cost, flexible solution for all your conveyor weighing needs. The weigh stands can be integrated into any pre-existing system to fit the exact height and width of your conveyor. This simple design is adaptable to a wide range of conveyor manufacturers.

ELS Series Size Options

Height Range	Width Range
23 - 28 INCHES	18 - 24 INCHES
	25 - 36 INCHES
	37 - 54 INCHES
29 - 36 INCHES	18 - 24 INCHES
	25 - 36 INCHES
	37 - 54 INCHES

Built Tough

Rice Lake's ELS Series can be made of a powder-coated mild steel or stainless steel to accommodate a variety of weighing needs. The two-part ELS Series weigh stands are available in 250-, 500- and 1,000-pound capacities per stand.

Ease of Installation

The ELS Series is designed for easy installation and flexibility. The height and width are fully adjustable to fit your facility. With jack bolts and shims on the leveling feet, you can easily match existing conveyor height.

STANDARD FEATURES

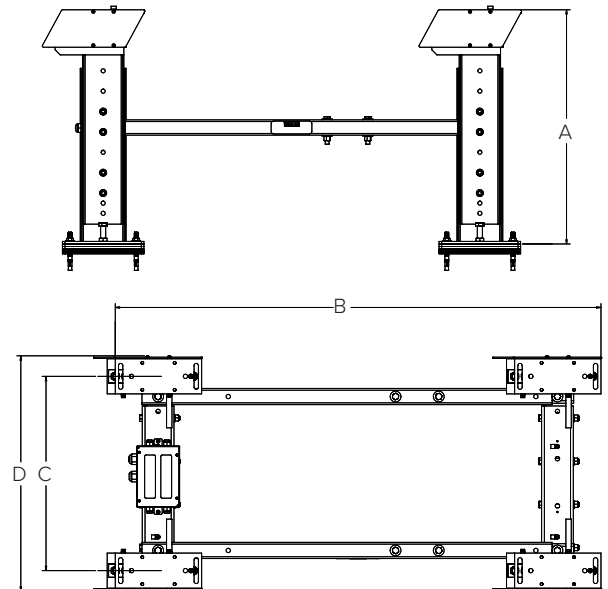
- Adjustable height and width in 1-inch increments
- Stand spacing is to not exceed 5 ft 6 in
- Mild or stainless steel
- Available in capacities of 250, 500 or 1,000 lb (per stand)
- Individual load cell overload protection
- Jack bolts in leveling feet for conveyor alignment
- Includes two stands, load cells, junction box, two adjustable stabilizing braces, leveling shims and hardware

OPTIONS

- Indicator stand in mild or stainless steel
- Additional weigh stand (longer conveyors may require additional stands for support)
- Additional stabilizing brace kit (required if weigh stands are not bolted to the floor)

Dimensions

	Kit Variation	Minimum Dimension	Maximum Dimension
A	Small	22 in (55.88 cm)	28 in (71.12 cm)
	Large	29 in (73.66 cm)	36 in (91.44 cm)
B	All	30 in (76.20 cm)	66 in (167.64 cm)
C	Small	17 in (43.18 cm)	24 in (60.96 cm)
	Medium	25 in (63.50 cm)	36 in (91.44 cm)
	Large	37 in (93.98 cm)	54 in (137.16 cm)
D	Small	22 in (55.88 cm)	28 in (71.12 cm)
	Medium	29 in (73.66 cm)	40 in (101.60 cm)
	Large	41 in (104.14 cm)	58 in (147.32 cm)



SALES AND TECHNICAL ASSISTANCE

RICE LAKE
WEIGHING SYSTEMS

HEADQUARTERS
230 West Coleman Street
Rice Lake, Wisconsin 54868 - USA
Tel: (715) 234 9171 | Fax: (715) 234 6967
www.ricelake.com