

November 21, 2014
Revised: April 3, 2020

Products: Ishida Uni-9 and SLP-5

Contents: Configuring SLP-5 to Automatically Populate Uni-9 Presets



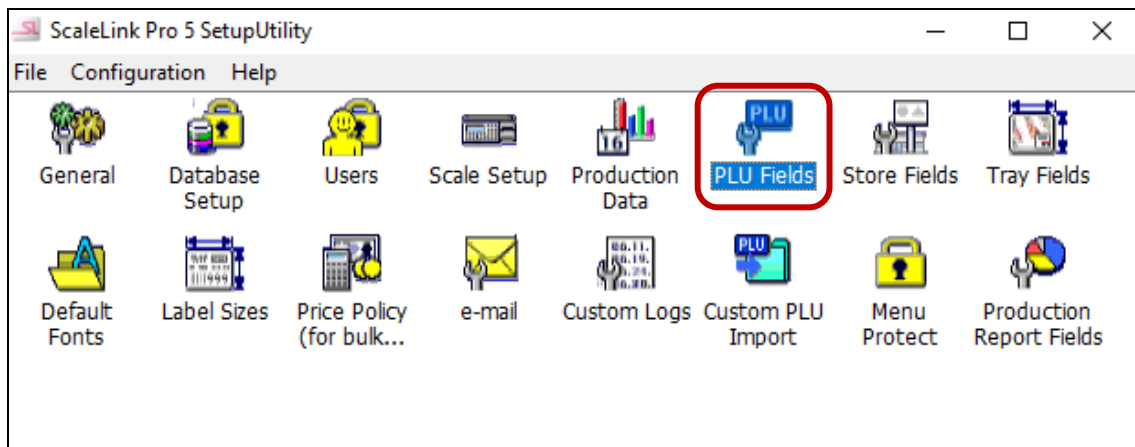
Authorized distributors and their employees can view or download this document from the Rice Lake Retail Solutions distributor site at www.ricelake.com/retail.

Background

When working with Uni-9 preset keyboards, it is possible to create a preset keyboard template in SLP-5. Then, every time PLUs are added/edited/deleted, the preset keyboard updates automatically.

Procedure

1. Before beginning this procedure, determine the categories to be used. Assign a numeric value to each category starting with 2. The list and numbering will be used later to create the preset keyboard template.
2. Open the SLP-5 Setup Utility and login as an Administrator.
3. Go to **PLU Fields**. See [Figure 1](#).



[Figure 1](#). Select "PLU Fields".

4. Click on the **Advanced Settings** icon. See [Figure 2](#).

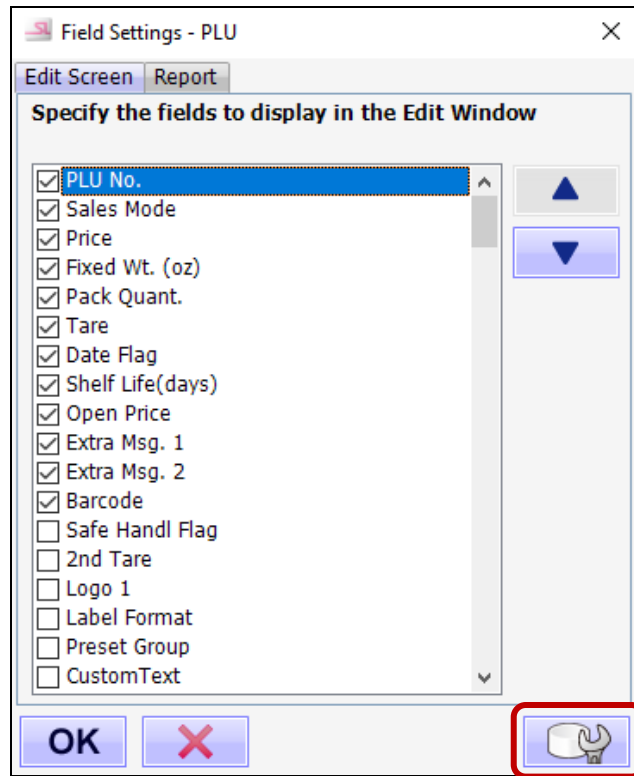


Figure 2. Select "Advanced Settings".

5. Select **Preset Group** and then click the **Edit** icon. See Figure 3.

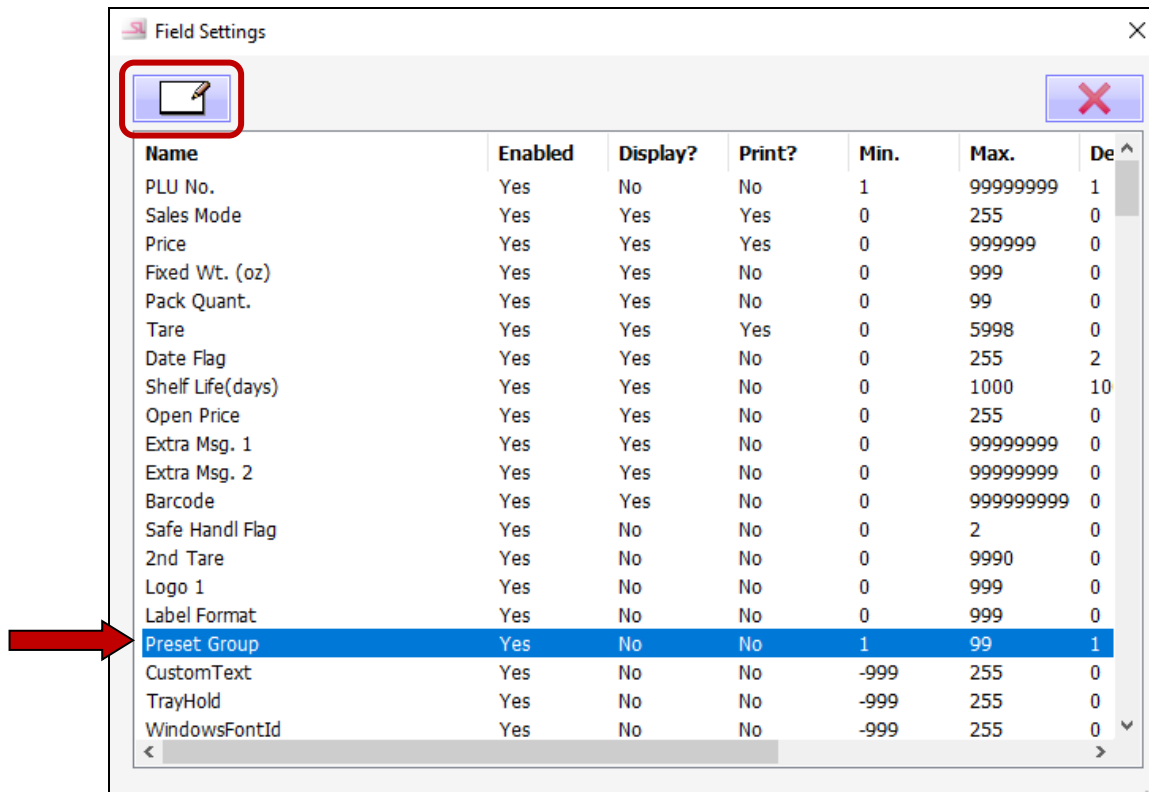
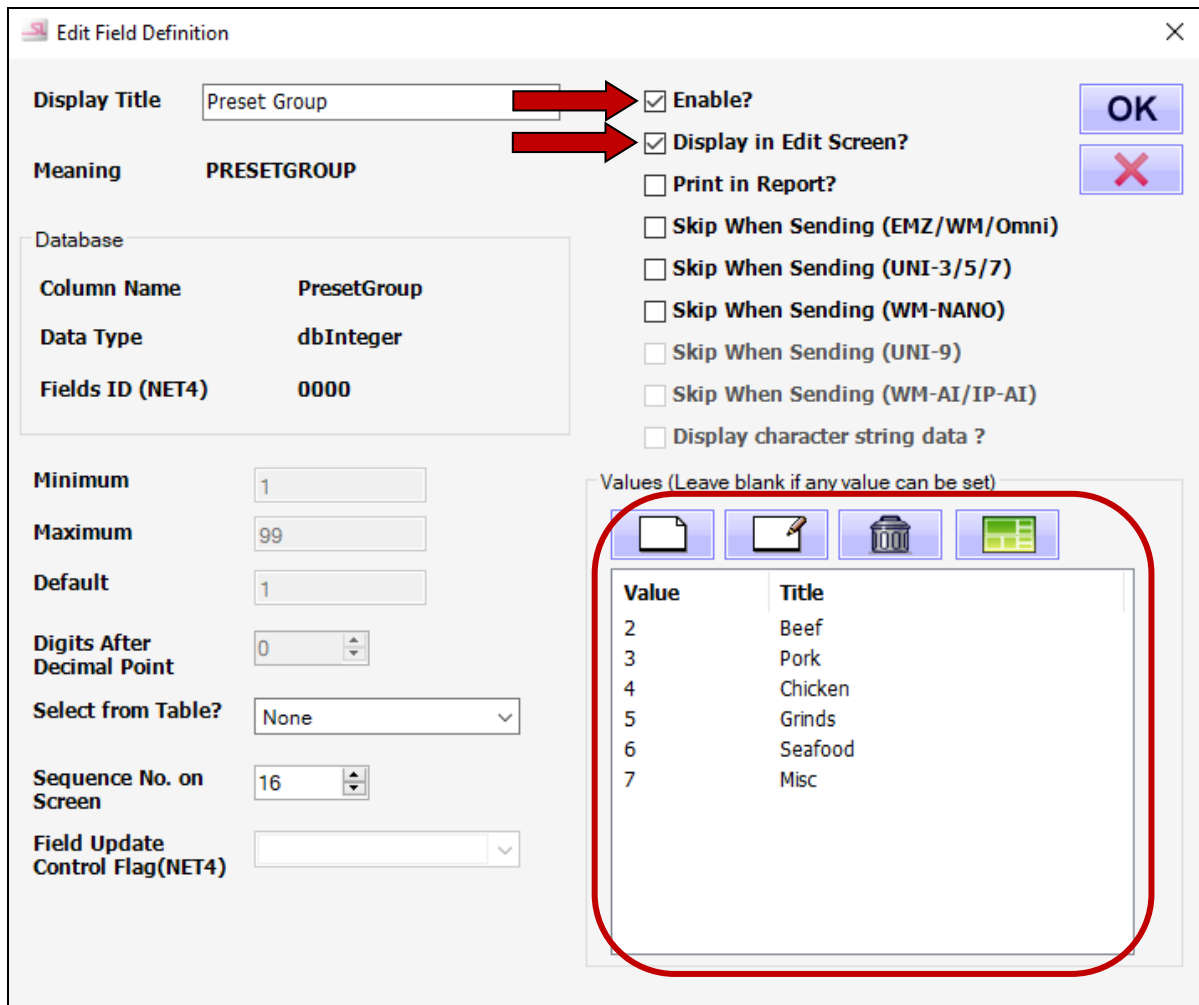


Figure 3. Select and Edit "Preset Group".

6. Confirm "Enable?" and "Display in Edit Screen?" are checked. See [Figure 4](#).
7. Add the groups based on the category list created in step 1.



[Figure 4](#). Add the Preset Groups Created in Step 1.

8. Click **OK** and close the Setup Utility.
9. Open SLP-5 and login as an Administrator.
10. Go to **UNI-9/WM-AI Presets** and create a new Uni-9 preset keyboard.
11. Click the **Default Key Layout** icon. See [Figure 5](#).

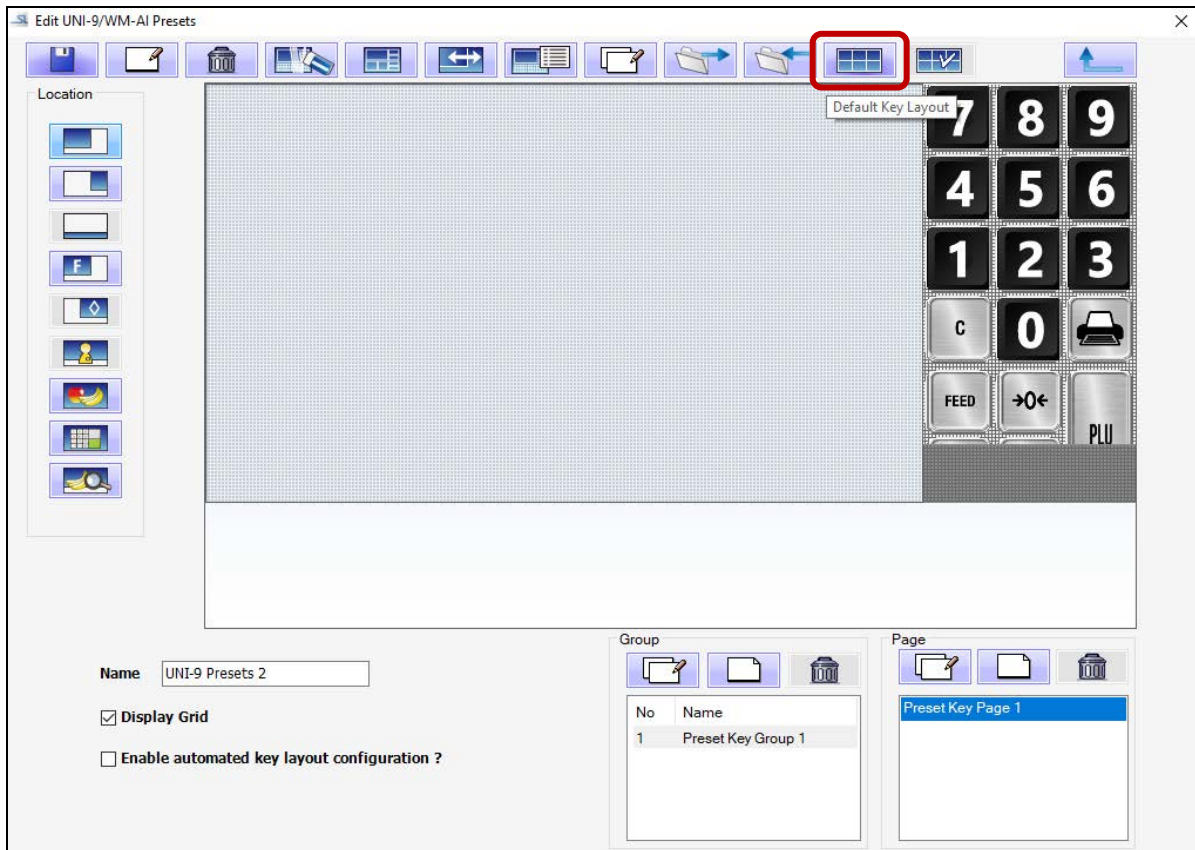


Figure 5. Select "Default Key Layout".

12. Create a new key for a category. Set the Key Data value and Key Text to match the category list created in step 1. See [Figure 6](#).
 - a. Uncheck the "Available to automated key layout configuration?" option. This is required to add a Jump Group (category) key.
 - b. Key Type = Jump Group
 - c. Key Data = 2 (this is for the first category only)
13. Repeat step 12 to create Jump Group keys for all categories 3, 4, 5, etc. created in step 1.

Edit Preset Layout

Key Type: JUMP GROUP

Key Data: 2

Sub Key Data: 0

Font Size: 20

Sub Key Font Size: 0

Key Text: BEEF

Max. Lines: 2

Key Position: X 1 Y 1

Key Width: 67 grid Key Height: 58 grid

Title Height: 50 grid

Key Shape: Thick Corner Round

Image: 59:Image59.png

Upper Background Color: [Color Picker]

Lower Background Color: [Color Picker]

Upper Text Color: [Color Picker]

Lower Text Color: [Color Picker]

Available to automated key layout configuration ?

Key ID: 0

Figure 6. Enter the Properties for Each Jump Group (Category).

14. In the Group list in the lower right corner, add the first group from the list of categories created in step 1. Do not add the remaining groups at this time. See Figure 7.

- Notes:**
- The first group "Preset Key Group 1" is the main page where the category keys reside. Rename that group page as "Main".
 - If a group is added but no PLU preset keys are created, the group will not be saved.

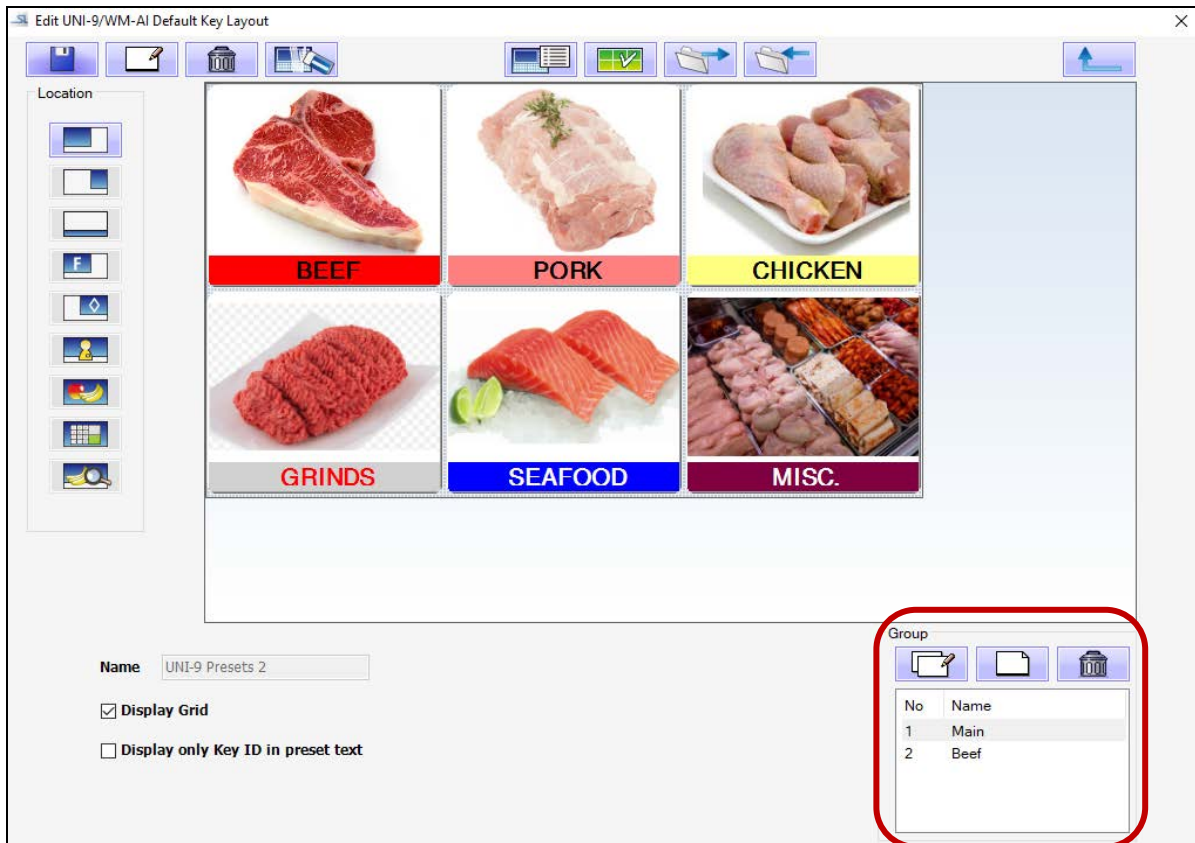


Figure 7. Add to the Group List.

15. Next, select the group added in the Group box and design the PLU preset key layout for that group. See [Figure 8](#).
16. Add as many preset PLU keys as desired.
 - a. Make sure "Available to Automated Key Layout Configuration" is checked. See the lower left of [Figure 6](#).
 - b. Key Type = PLU. Only PLU keys are available on this page.
 - c. Select the font size. Font sizes 10 or 11 generally work well depending on the key size.
 - d. Select the Upper Background and Upper Text colors for the key.
 - e. To add keys, right the last key added and choose Copy. Then right click and Paste. Ctrl+C (copy) and Ctrl+V (paste) are also available.

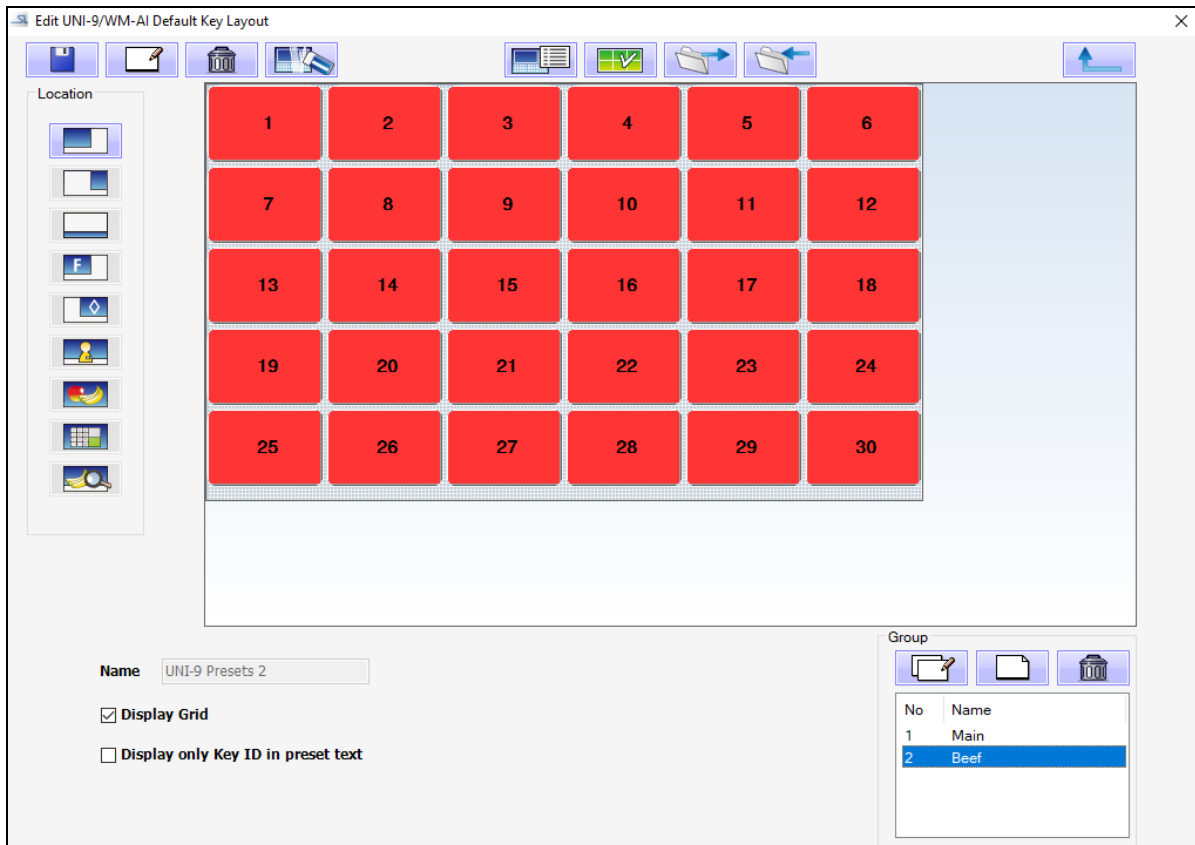


Figure 8. Preset PLU Keys to Be Populated Automatically.

17. Click the **Return Arrow** to save the changes. **DO NOT** click the "X" at the upper right to exit. SLP-5 will abandon the changes if the "X" is clicked – even if the **Save** icon had been clicked.
18. Go to **Add/Modify/Delete PLUs**.
19. Add PLUs and then select which group they belong to in the **Preset Group** field. For existing PLUs select the appropriate **Preset Group**. See [Figure 9](#).

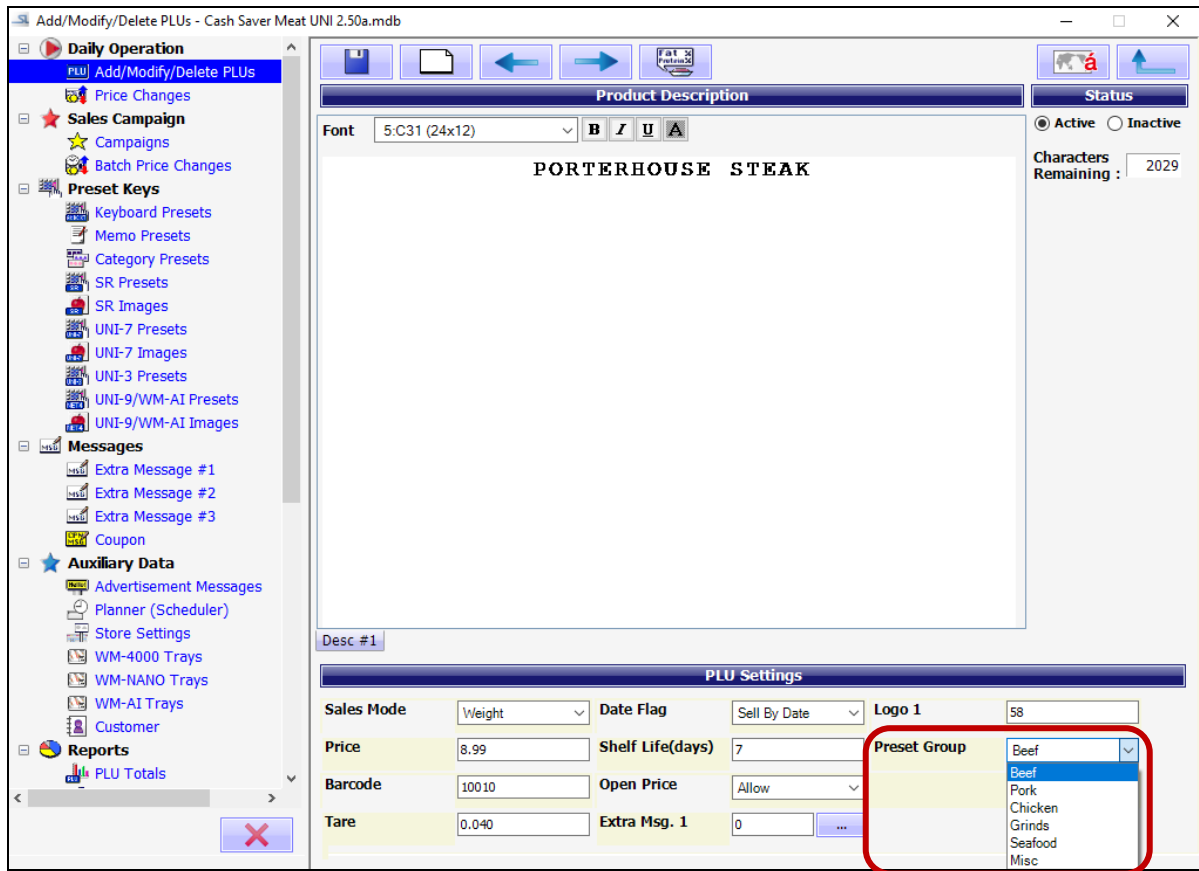


Figure 9. Assign PLUs to a Preset Group.

20. Return to the **UNI-9/WM-AI Presets** and select the keyboard that was created.
21. Check the "Enable Automated Key Layout Configuration" option. See [Figure 10](#).
22. PLUs will be assigned to the preset keys starting with the lowest PLU number.

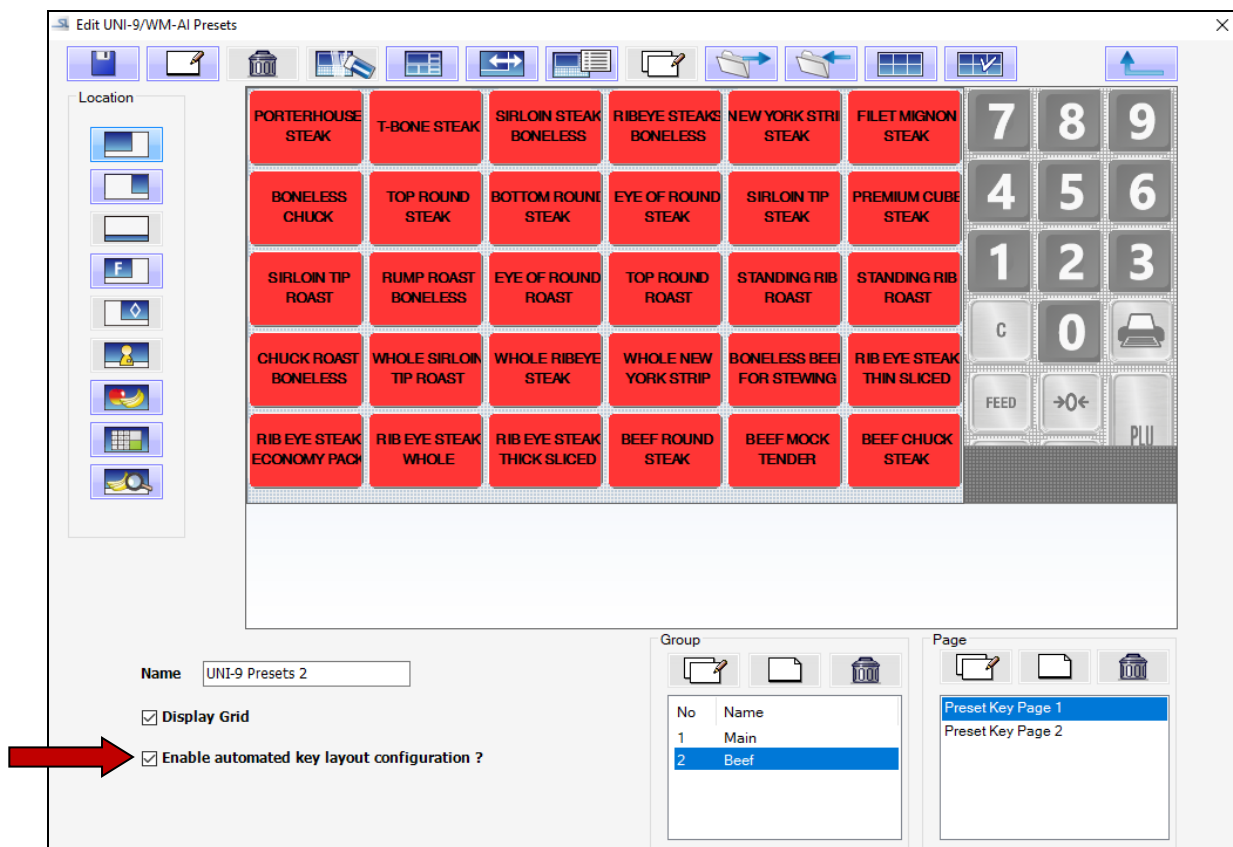


Figure 10. PLUs Automatically Assigned to the Preset Keys.

23. Verify the PLU presets populate as expected. If not, return to the Default Key Layout and edit the key sizes, fonts, etc. as needed.
24. If changes are made to the Default Key Layout, check and uncheck the "Enable Automated Key Layout Configuration" option to repopulate the preset keys.
25. After the first category "2" is complete repeat from step 14 for the remaining categories one at a time.
26. To stop automatically populating the PLU preset keys and edit as usual, uncheck the "Enable Automated Key Layout Configuration" option. Be aware that reenabling the automated keys will overwrite all manual edits.



© Rice Lake Weighing Systems Specifications subject to change without notice.
Rice Lake Weighing Systems is an ISO 9001 registered company.

230 W. Coleman St. • Rice Lake, WI 54868 • USA
U.S. 800-472-6703 • Canada/Mexico 800-321-6703 • International 715-234-9171 • Europe +31 (0)26 472 1319

www.ricelake.com/retail

www.ricelake.mx

www.ricelake.eu

www.ricelake.co.in