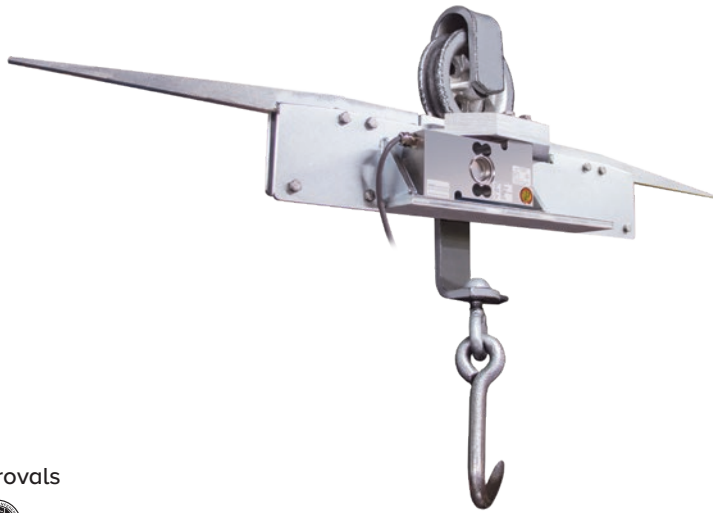


# MS200

Portable Monorail Scale

MONORAIL SCALES



Approvals



## Part Number/Price

Part #	Description	Est. Weight	Price
19743	MS200HB, NTEP Certified portable	38 lb	Consult

## Options/Accessories

Part #	Description	Price
16984	Additional operating manual	Consult
167585	Replacement load cell, 500 kg 2 mV/V 350 ohm SST construction, with 25 ft of cable	Consult
216728	Configuration and Monorail calibration	Consult

## Standard Features

- 8-inch live-rail designed to weigh one trolley
- 750 × 0.5 lb resolution
- Compatible with both 3/8 in and 1/2 in rails
- Requires less than 41 in of straight rail to install
- Electroless nickel plated, steel construction
- 25 ft of load cell cable for flexible installation
- Slightly recessed live-rail for the trolley roller provides stable weighments

## Specifications

### Construction:

Electroless nickel plated steel construction, stainless steel hardware

### Load Cell Construction:

Stainless steel

### Bridge Resistance:

350 ohm nominal

### Rated Output:

2 mV/V

### Nonlinearity:

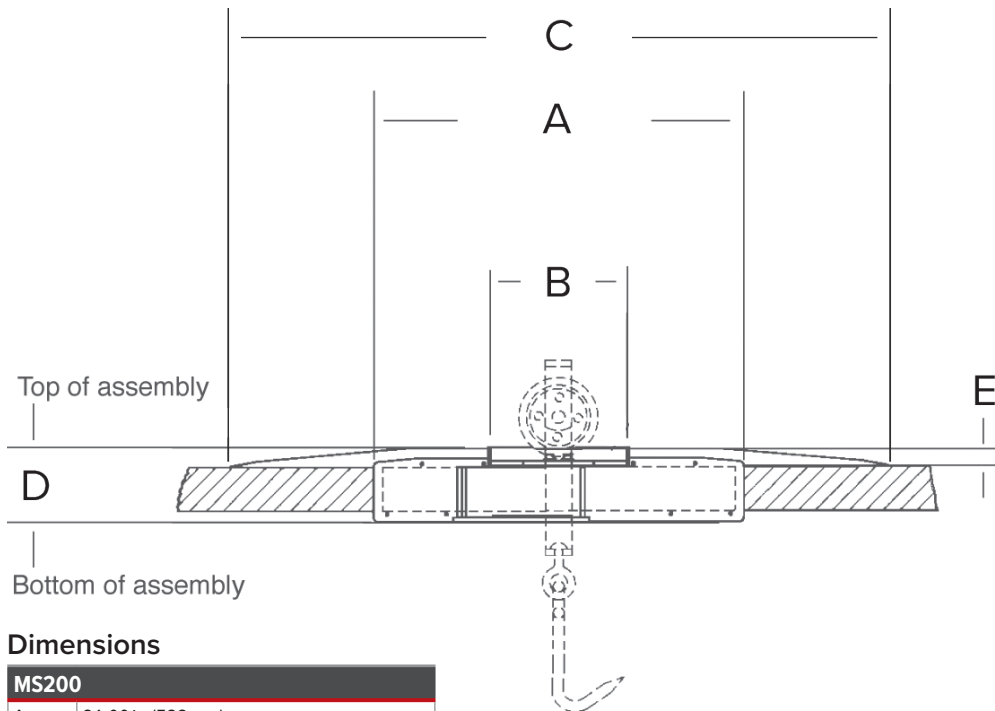
0.03% full scale

### Warranty:

One-year limited

### Approvals:

NTEP 90-003, Class III, 1,500 d



## Dimensions

MS200	
A	21.00 in (533 mm)
B	8.00 in live rail (203 mm)
C	40.32 in (1,024 mm)
D	4.50 in (114 mm)
E	1.13 in (29 mm)