

# 6 Step

## Integrated Crane Weighing Component Selector Guide

01

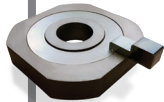
### Sensor



**Load Pin**  
Accuracy: 1-3% of Rated Capacity



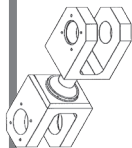
**Load Link**  
Accuracy: .5% of Rated Capacity



**Shear Web**  
Accuracy: .5% of Rated Capacity



**Clamp-on**  
Accuracy: .5% of Rated Capacity



**Custom**

02

### \*Cable Ft

5  
10  
15  
20  
25  
30

\* Rice Lake recommends a bulkhead connector with mating cable.

03

### RF Transmitter or Signal Conditioner



100 - 300 ft  
MSI-7000/1  
Transend™



500 - 1,000 ft  
MSI-9000  
CellScale™

SCT-2200



04

### Remote Display/Controller



Handheld  
(1) MSI-8000



Desktop LCD  
(2) MSI-8004HD



Tablet



Handheld  
MSI-9750A



Desktop  
MSI-9850

05

### \*Relays

2, 3, 4, 8

2, 3, 4, 6

2

\* Inquire about other available I/O and fieldbus options.

06

### Scoreboard

Hardwired or Wireless  
4 or 6 inch  
Remote Display

4 in LaserLight2®,  
6 in LaserLight2®,  
pictured below

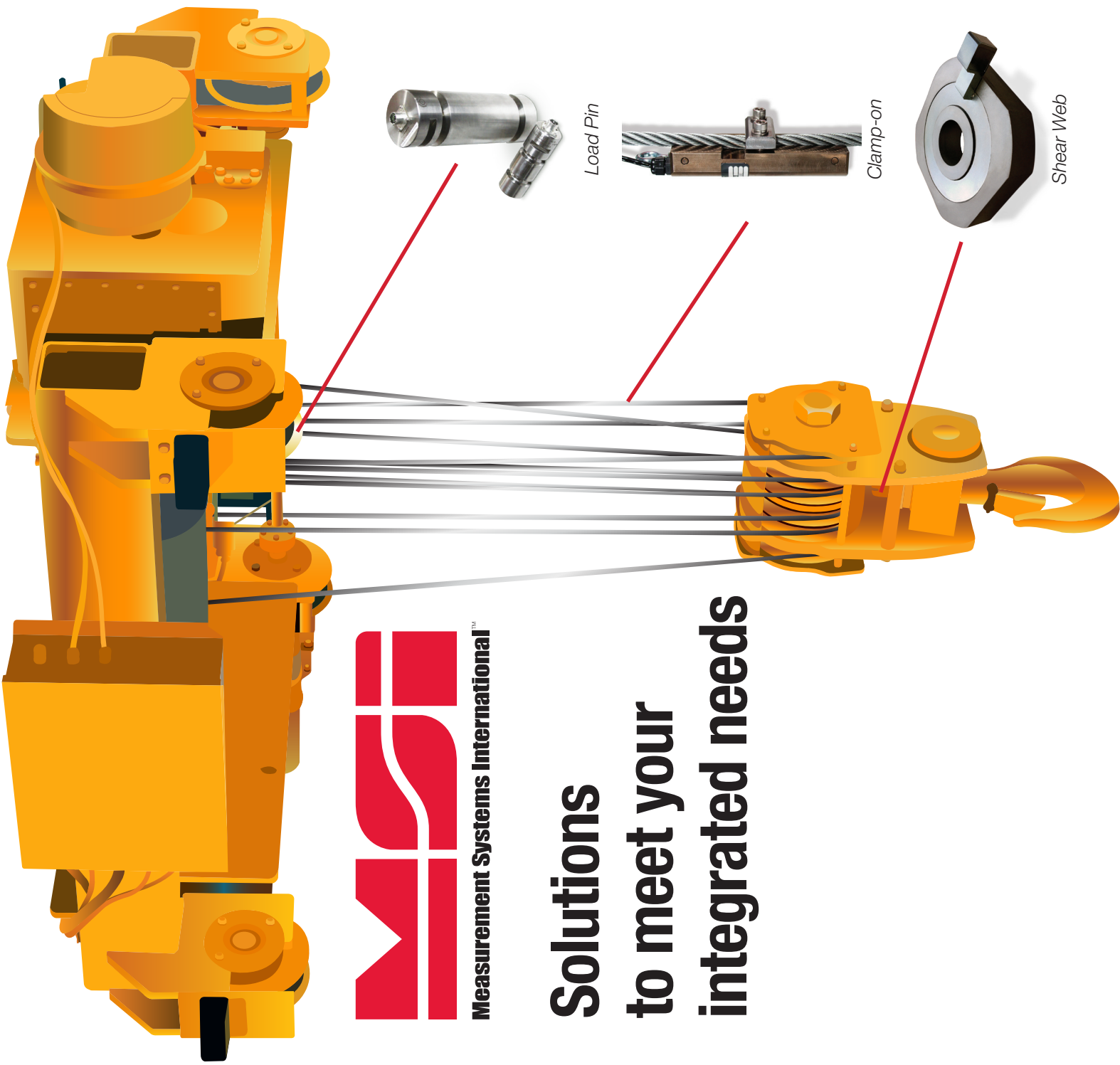


**RICE LAKE**  
WEIGHING SYSTEMS

**MSI**  
Measurement Systems International

230 W. Coleman St. • Rice Lake, WI 54868 • USA  
TEL: 715-234-9171 • FAX: 715-234-6967 • [www.ricelake.com](http://www.ricelake.com)

An ISO 9001 registered company © 2017 Rice Lake Weighing Systems PN 178046 02/18  
Specifications subject to change without notice.



Measurement Systems International™

**Solutions  
to meet your  
integrated needs**



[www.ricelake.com](http://www.ricelake.com)