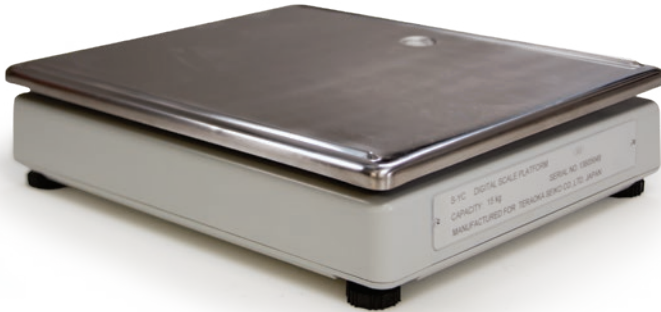


DIGI® S-YC Series

Remote Scale Base Platforms



Standard Features

- Stainless steel platter
- ABS injection-molded plastic base
- Single-point strain gauge load cell
- Adjustable legs
- Leveling bubble
- 14-pin connector on three-meter cable

Specifications

Output Impedance:

350 ± 5 ohm

Insulation Resistance:

> 500 megohm

Rated Output:

1.0016 mV/V

Color Code:

Green +Output
Yellow -Output
Black Shield
White -Input
Red +Input

Load Cell Type:

K-Type DIGI cell

Load Cell Cable Length:

118 in (3 m)

Operating Temperature:

14 °F to 104 °F (-10 °C to 40 °C)

Warranty:

Two-year limited

Part Number/Price

Part #	Description	Platter Dimensions	Overall Dimensions	Est. Weight	Price
154835	500 g (1 lb)	7.9 × 5.6 in (201 × 143 mm)	13.4 × 11.1 × 3.5 in (341 × 284 × 90 mm)	7.7 lb (3.5 kg)	Consult
154836	1 kg (2 lb)	9.6 × 6.9 in (244 × 177 mm)	13.4 × 11.1 × 3.5 in (341 × 284 × 90 mm)	7.7 lb (3.5 kg)	Consult
154838	2.5 kg (5 lb)	13.4 × 11.1 in (341 × 284 mm)	13.4 × 11.1 × 4.75 in (341 × 284 × 120 mm)	11 lb (5 kg)	Consult
154839	5 kg (10 lb)	13.4 × 11.1 in (341 × 284 mm)	13.4 × 11.1 × 4.75 in (341 × 284 × 120 mm)	11 lb (5 kg)	Consult
154840	10 kg (20 lb)	13.4 × 11.1 in (341 × 284 mm)	13.4 × 11.1 × 4.75 in (341 × 284 × 120 mm)	11 lb (5 kg)	Consult
154841	25 kg (50 lb)	13.4 × 11.1 in (341 × 284 mm)	13.4 × 11.1 × 4.75 in (341 × 284 × 120 mm)	11 lb (5 kg)	Consult