



Picture is a representation of actual product.

### Specifications

- Full Scale Output:**  
3.0 (± 0.1%) mV/V
- Bridge Resistance:**  
350 ohm, nominal
- Material/Finish:**  
Stainless steel
- Temperature:**  
Operating range  
0 °F to 150 °F (-18 °C to 65 °C)
- Seal Type:**  
Environmentally sealed, IP67
- Safe Overload:**  
150% full scale
- Rated Excitation:**  
5 to 10 VDC (15 V maximum)
- Linearity:**  
0.05% full scale
- Repeatability:**  
0.03% full scale
- Insulation Resistance:**  
5,000 megohm
- Cable Length:**  
40 ft
- Cable Diameter:**  
0.25 in  
Polyurethane jacket with connector
- Cable Color Code:**  
Green +Excitation  
Black -Excitation  
White +Signal  
Red -Signal
- Warranty:**  
Two-year limited

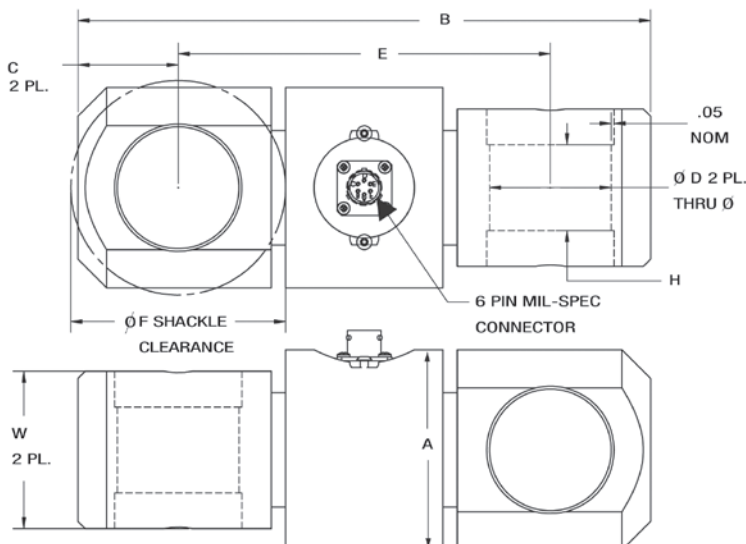
### Order Information

Load Rating	Part #	Est. Weight	Price
5,000 lb	117731	5 lb	Consult
10,000 lb	117732	5 lb	Consult
25,000 lb	117733	8 lb	Consult
50,000 lb	117735	34 lb	Consult
75,000 lb	117736	34 lb	Consult
100,000 lb	117737	56 lb	Consult
150,000 lb	117738	56 lb	Consult
200,000 lb	117739	95 lb	Consult
250,000 lb	117740	117 lb	Consult
300,000 lb	117741	191 lb	Consult
500,000 lb	117742	191 lb	Consult
<b>Replacement Parts</b>			
40 ft load cell cable	187132		Consult

NOTE: Consult factory for shackles

### Dimensions

Rated Capacity	A	B	C	ØD	E	ØF	W	H
5,000 to 10,000	2.00	6.50	1.00	1.05	4.50	2.38	1.37	0.75
25,000	2.75	8.00	1.38	1.55	5.25	2.88	2.00	1.00
50,000 to 75,000	3.25	14.00	2.50	2.31	9.00	5.00	3.00	1.75
100,000 to 150,000	4.00	16.00	2.88	2.88	10.25	6.25	4.00	2.00
200,000	6.00	18.00	3.25	3.38	11.50	6.50	4.75	2.38
250,000	6.50	20.00	3.75	3.88	12.50	7.50	5.00	2.75
300,000 to 500,000	7.50	24.00	4.50	4.31	15.00	9.50	5.40	3.00



RICE LAKE  
LOAD CELLS