

Healthweigh 350 Series Wheelchair Scales

Trimming Corner Load Cell Alignment

Issue: Different weight reading at different locations on the scale platform

Solution: Perform load cell corner adjustment

This trimming procedure of a scale ensures the same weight value is displayed regardless of weight placement or location.



Manuals are available from Rice Lake Weighing Systems at www.ricelake.com/manuals

Warranty information is available at www.ricelake.com/warranties

Tools List

- 2 calibration weights (50 lb or 20 kg)
- 5 mm hex allen wrench
- 10 mm open end wrench
- 8 mm socket wrench
- Phillips screwdriver
- Bubble level
- Replacement tape (PN 217408)
- Flexible screwdriver extension (optional)

Scale Preparation

1. Ensure the scale is powered off.
2. Lay scale back to expose the fasteners under the base.
3. Remove the ramp screws with a Phillips screwdriver (see [Figure 1](#)).



NOTE: Use the flexible screwdriver extension for ease of removal.



Figure 1. Ramp Screw Locations

4. Remove the ramp(s) from the black plastic cover and set aside (see [Figure 2](#)).



NOTE: The ramps are secured to the cover with double sided foam tape. There may be resistance during removal.



Figure 2. Ramp Removal

5. Remove handle hex bolts and nuts with a 5 mm hex allen wrench and 10 mm open end wrench (see [Figure 3](#)).

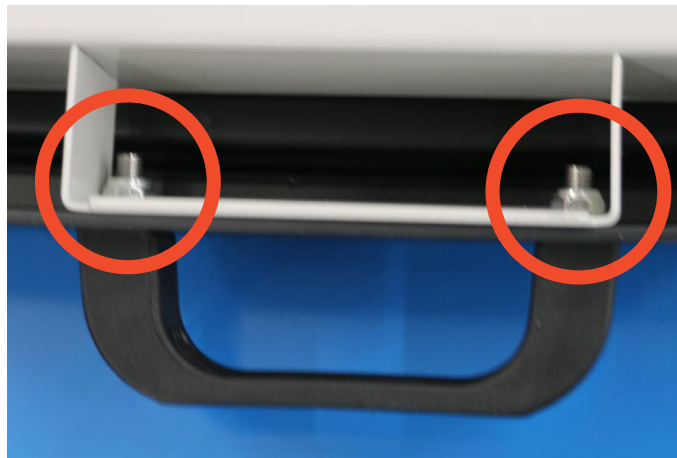


Figure 3. Handle Nut Locations

6. Remove the nuts and washers with an 8mm socket wrench from the base (see [Figure 4](#)).

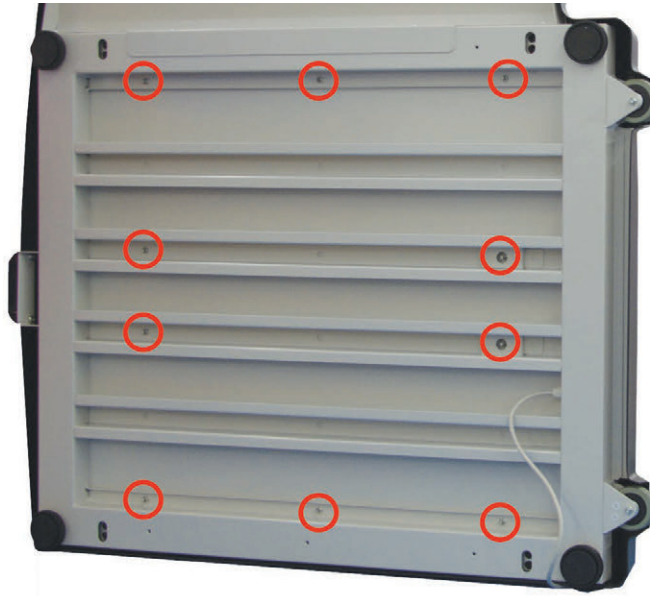


Figure 4. Base Nut Locations

7. Lift the black plastic cover off the base of the scale (see [Figure 5](#)).



Figure 5. Black Plastic Cover Removal

8. Reinstall the ramp(s) to the base (see [Figure 6](#)).

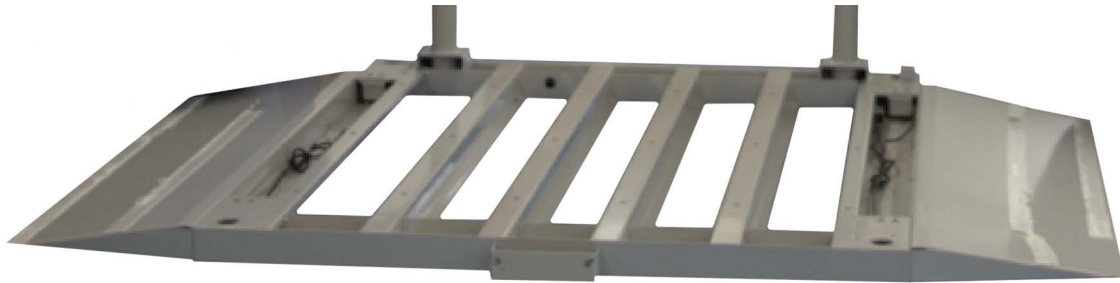


Figure 6. Prepared Scale for Trimming

Trimming Procedure

1. Place the base feet down on a flat work surface.
2. Use a bubble level to ensure the base is level side-to-side and front-to-back. Adjust the feet as needed.
3. On the medical indicator, press and hold the **Power** button and **Enter** button until *ID* flashes on the display.
4. Press the **Enter** button twice then press the **BMI** button twice to access the A/D raw counts.
5. Place calibration weight on corner 1 (see [Figure 7](#)). Record the A/D value.



IMPORTANT: Ensure that the calibration weight is placed on the scale base and extends to the outer rail. Never place more than one calibration weight on the base.

6. Move the calibration weight to corner 2. Record the A/D value.

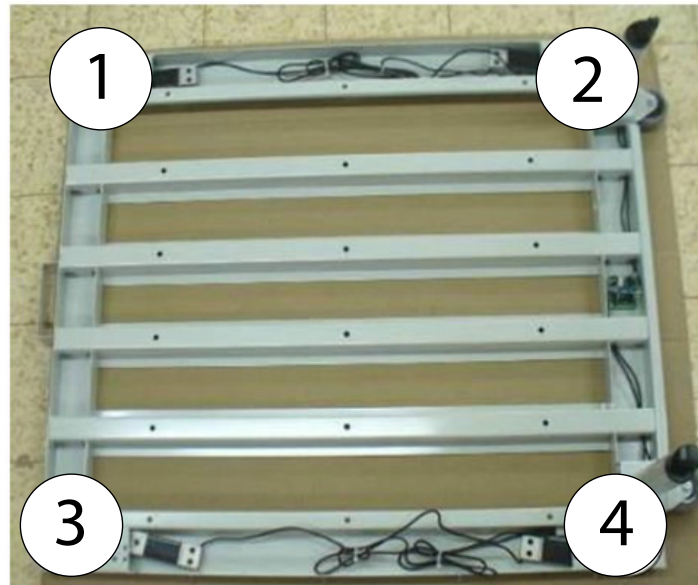


Figure 7. Weight Placement Locations on Scale Base

- Adjust the potentiometer in between the connectors for load cell corners 1 and 2 (see [Figure 8](#)).

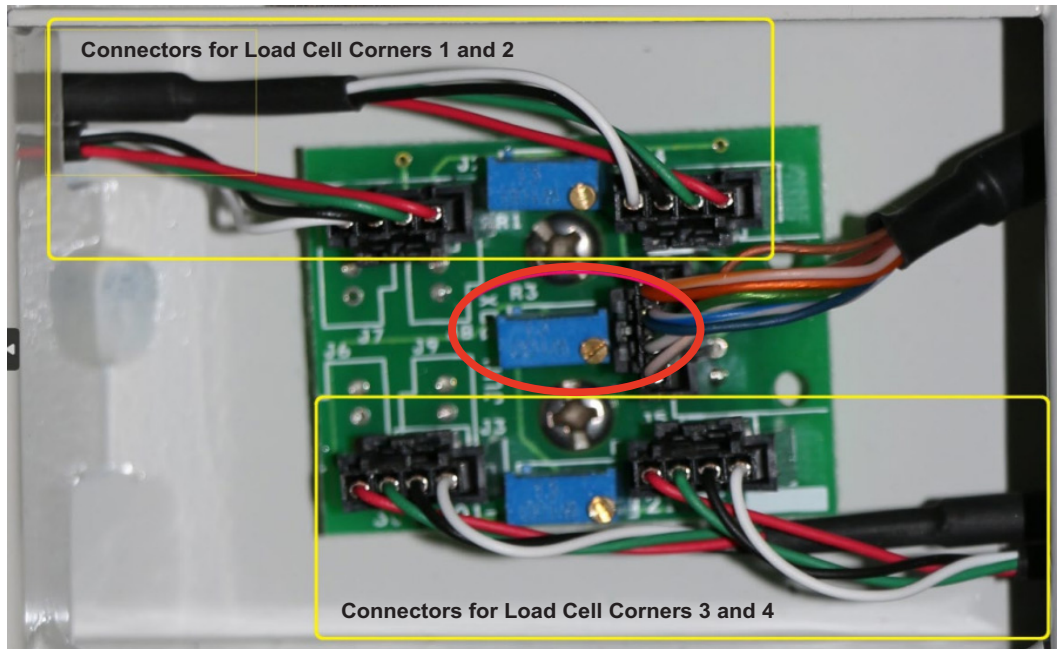


Figure 8. Potentiometer Locations

- Repeat Steps 5 through 7 with corners 3 and 4 adjusting with the applicable potentiometer.
- To align the scale from side-to side, place a weight between corners 1 and 2 (see [Figure 7 on page 4](#)). Record the A/D value.
- Repeat Step 9 with corners 3 and 4.
- Adjust the center potentiometer until an equal value is reached between the sides with a margin of 2 units of A/D (see [Figure 8](#)).


Scale Reassembly

1. To exit the menu, press the **BMI** button 4 times. *DONE* displays.
2. Press the **Enter** button and turn off the scale indicator.
3. Place a 31 in (790 mm) strip of replacement tape (PN 217408) lengthwise on each metal ramp (see [Figure 9](#)). Remove the backing paper.




Figure 9. Double Sided Foam Tape Placement

4. Place the black plastic cover onto the base and ramps.

 **IMPORTANT:** Be sure to press firmly on the leading edges of the ramp(s) to ensure they're firmly affixed to the double-sided tape.

5. Lay scale back to expose the screws under the base and reinstall the previously removed washers and nuts.

 **IMPORTANT:** After trimming procedure is complete and scale is reassembled, recalibrate the scale using a minimum of 50 kg or 100 lb of certified test weights.



© Rice Lake Weighing Systems Content subject to change without notice.

230 W. Coleman St. • Rice Lake, WI 54868 • USA USA: 800-472-6703 • International: +1-715-234-9171