

ScaleLink Pro 5 Lite Installation

Read the following information carefully before starting installation.

System Requirements

Parameter	Requirements
Operating System	ScaleLink Pro 5 Lite requires a PC running Windows 7, Windows 8, Windows 8.1 or Windows 10. The operating system must be capable of installing the Microsoft Windows.NET Framework. Note: ScaleLink Pro 5 Lite is a 32-bit application. It runs on 64-bit versions of Windows using the standard 32-bit support built into 64-bit Windows (called WOW64 or "Windows 32-bit On Windows 64-bit").
CPU and memory	1 GHz or faster processor with 2 GB or more RAM is recommended. More memory is strongly recommended if using a large database.
Screen Resolution	The minimum screen resolution is 1024 x 768 pixels.
Database	Microsoft Jet database engine (installed as part of Microsoft Data Access Components)

Table 1. System Requirements

Installation Checklist

- Before installation it is necessary to define all scales in the network. The Astra II is an ethernet scale, the IP address of each scale is needed. Contact a local dealer or Rice Lake Weighing Systems to obtain this information if needed.
- Uninstall existing copies of ScaleLink Pro 5 Lite.
- Once started, simply follow the instructions on the computer. See below for step by step instructions.
- Reboot the PC after completing the installation process.

Installation Procedure

1. Install CD-ROM. Use Windows File Explorer to open the installation CD-ROM and double click on the *SLP5Lite_240d.exe* program file. The InstallShield Wizard displays.

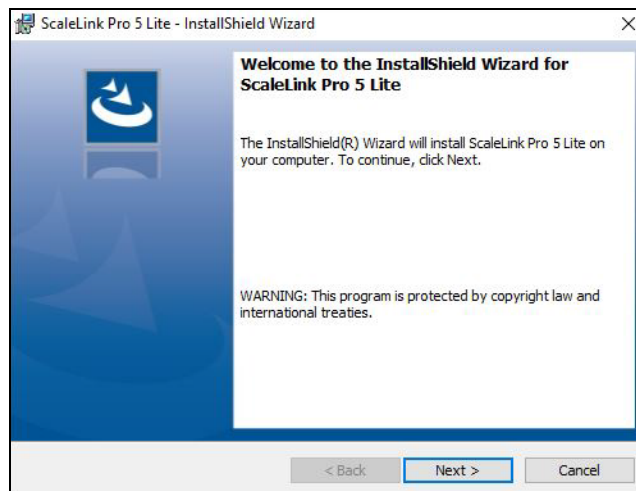


Figure 1. Welcome to the InstallShield Wizard

2. Click *Next* to proceed.

3. Accept the default folder and click **Next** to proceed.

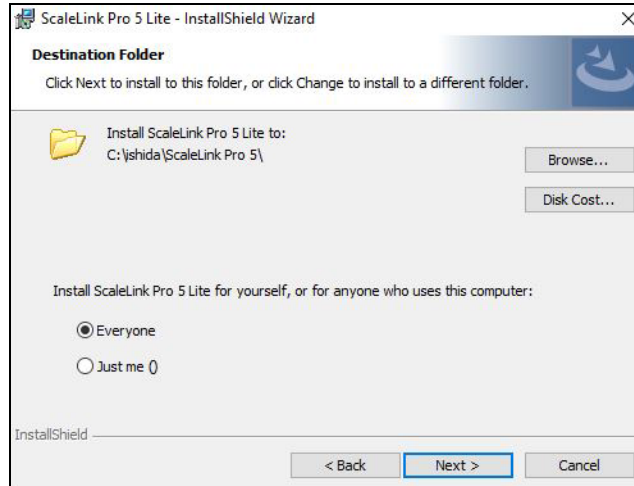


Figure 2. Destination Folder



Note If the option to install ScaleLink Pro 5 Lite for all users is available, make that selection.

4. A progress window is displayed while the installer copies the ScaleLink Pro 5 Lite files to the hard disk.
5. When the files are copied a final window is displayed to verify the installation was successful, click **Finish**.

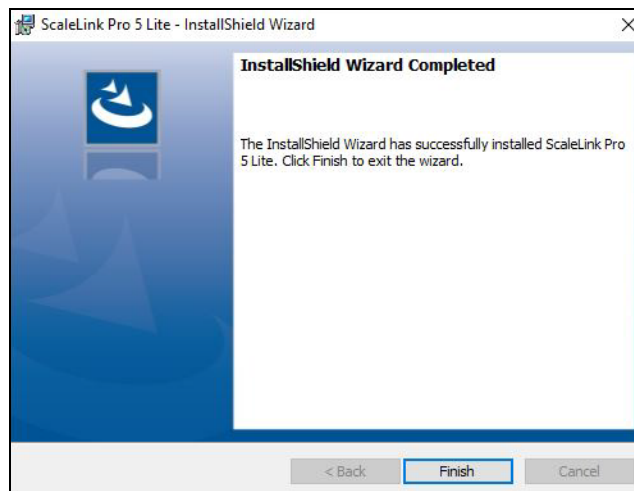


Figure 3. Installation Finished

Open ScaleLink Pro 5 Lite

1. Double click the ScaleLink Pro 5 Lite icon  on your desktop.
2. Select language, check box to prevent window from reappearing and click **OK** to proceed.

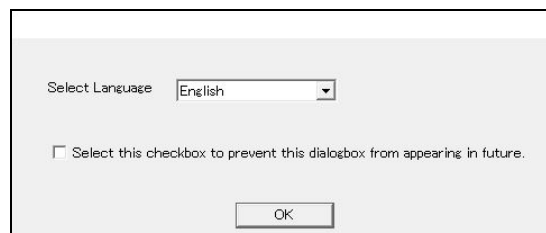


Figure 4. Select Language

- Enter license verification code and click **Verify** to proceed. Use the Product Key at www.ricelake.com/softwarelicense to request a license verification code. A 14 day trial is available by clicking **Verify Later**.

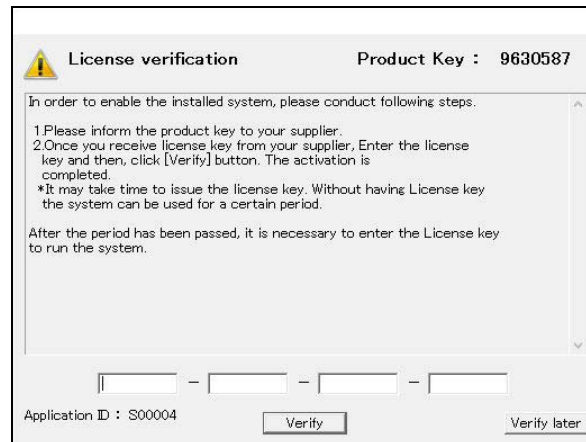


Figure 5. License Verification

- The ScaleLink Pro 5 Lite welcome/setup screen displays. Click the **Database Setup** link. The **Scale Setup** link is not enabled until after database setup is complete.

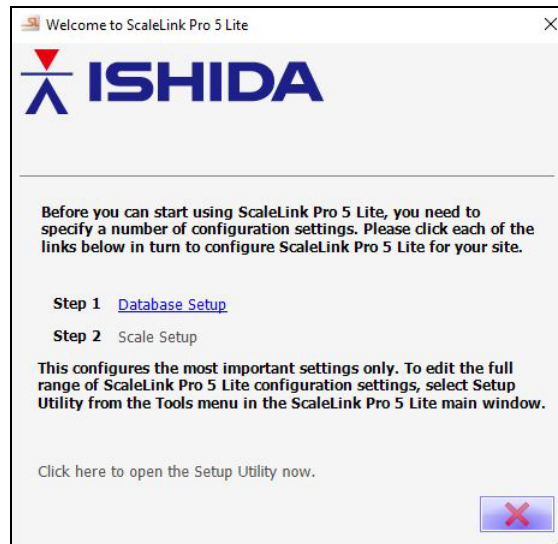


Figure 6. Welcome to ScaleLink Pro 5 Lite

- The database setup screen displays. Accept the default or create a database in another folder (ex Documents) and click **OK** to proceed.

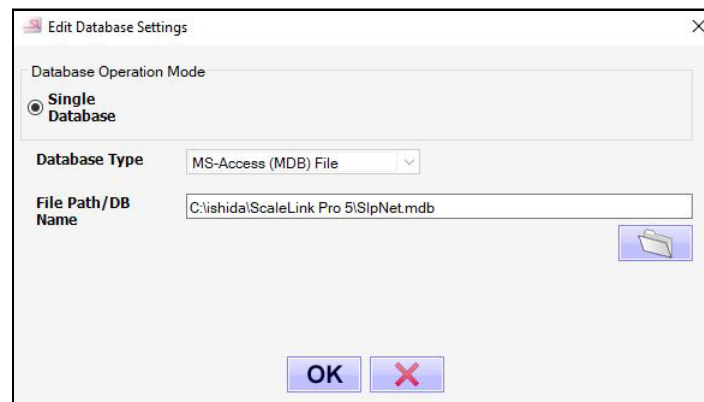


Figure 7. Edit Database Settings

- The ScaleLink Pro 5 Lite welcome/setup screen displays again. Click the **Scale Setup** link.

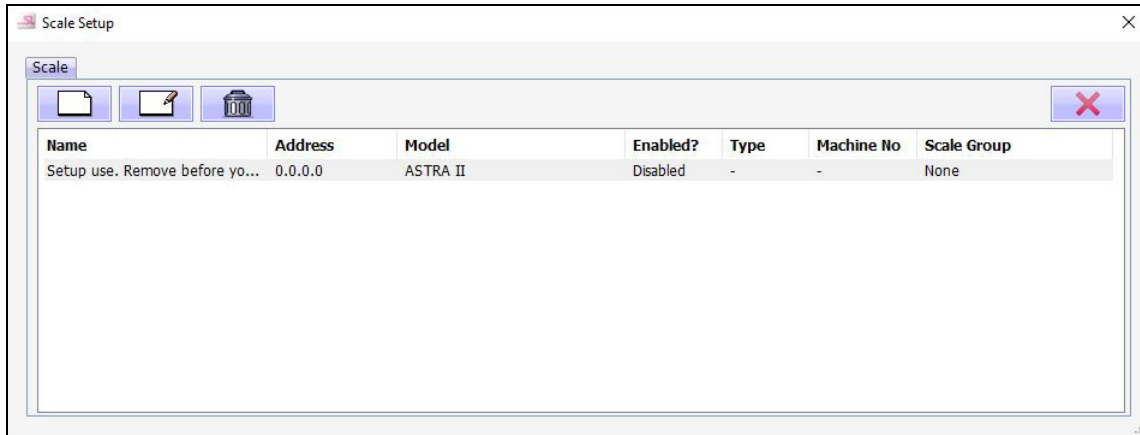




Figure 8. Scale Setup

- Highlight the default scale and click the **Delete** button icon  to remove it.
- Click the **New** button  to add each scale in the network. The add new scale window displays each time.

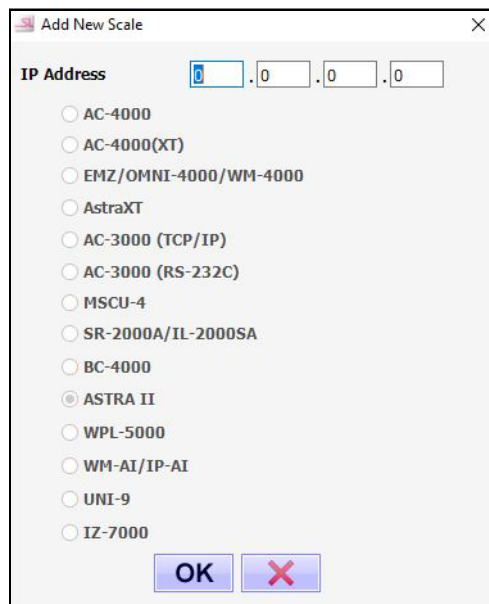


Figure 9. Add New Scale

- Enter the IP address of the scale and click the **OK** button.

10. The edit scale window displays for editing the scale settings.

Figure 10. Edit Scale



11. Rename the scale, if necessary, to help identify it (ex "Deli 1").
12. Click **OK** to accept the default settings. If changes are necessary, refer to the help file for details after completing setup.
13. When all necessary scales have been added, exit scale setup by clicking the **Close** button .
14. Exit the welcome window by clicking the **Close** button .
15. The main ScaleLink Pro 5 Lite application opens.



Figure 11. ScaleLink Pro 5 Lite Startup Screen



Note

If a firewall is installed on your PC, the firewall software may display popup windows when ScaleLink Pro 5 Lite is first run asking whether to allow ScaleLink Pro 5 Lite to have access to the network; always permit access.

Refer to the SLP-5 Lite Help file for additional information once in the application.

Help File Location

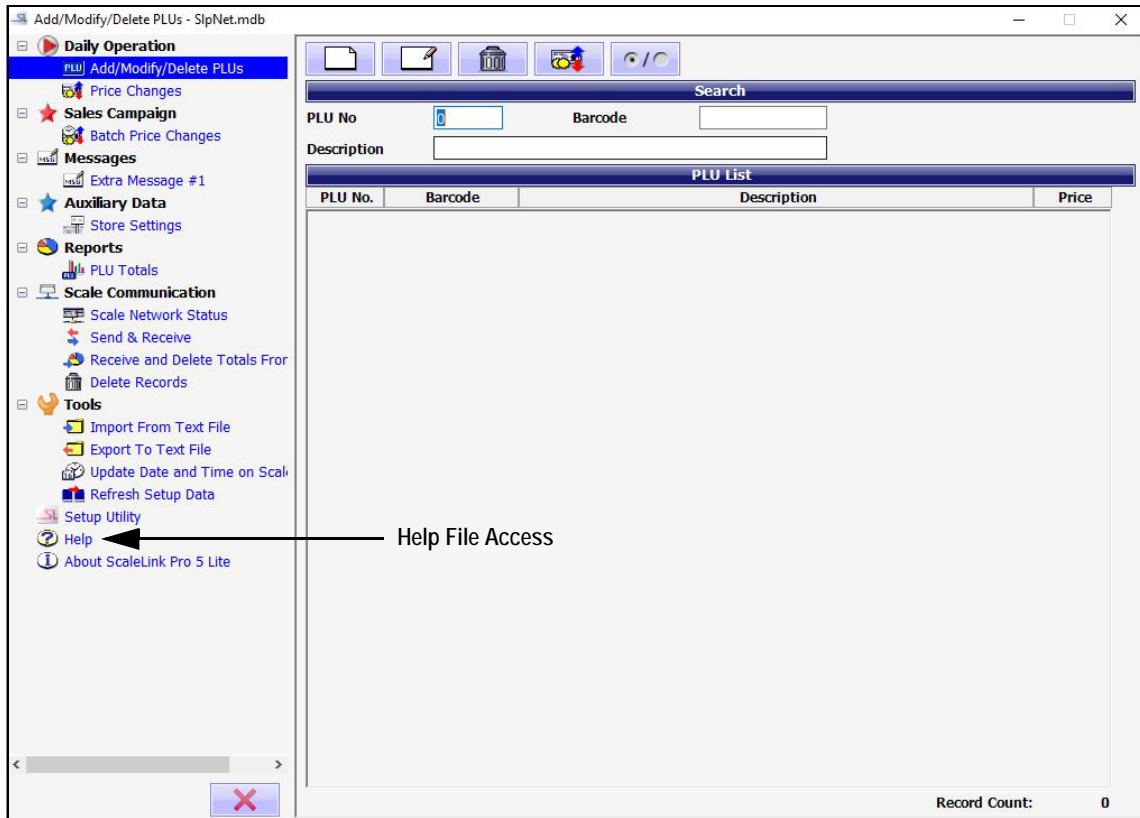


Figure 12. ScaleLink Pro 5 Lite Application

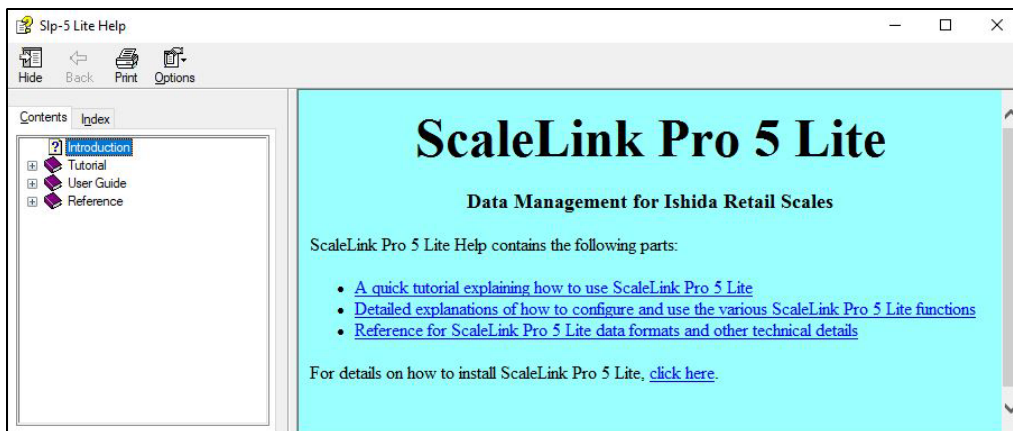


Figure 13. ScaleLink Pro 5 Lite Help File



© Rice Lake Weighing Systems Specifications subject to change without notice.
Rice Lake Weighing Systems is an ISO 9001 registered company.

230 W. Coleman St. • Rice Lake, WI 54868 • USA
U.S. 800-472-6703 • Canada/Mexico 800-321-6703 • International 715-234-9171 • Europe +31 (0)26 472 1319