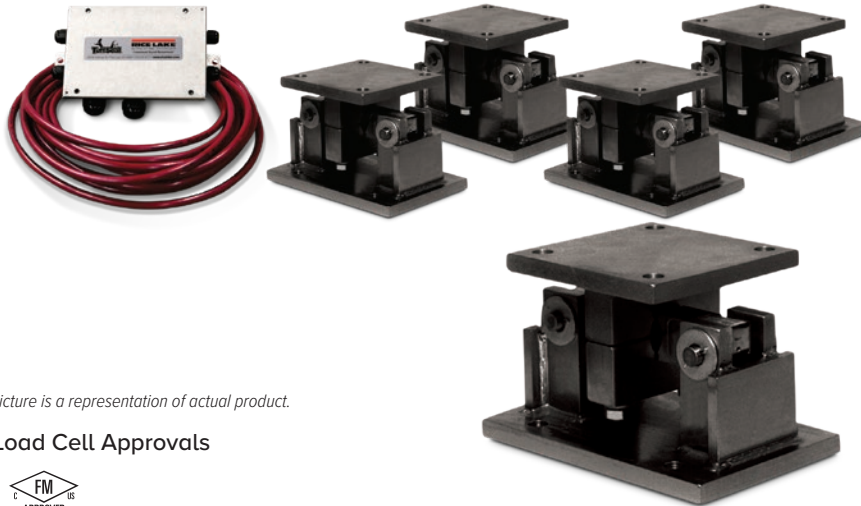


RL1600 Series

Mild Steel Weigh Modules, Rice Lake Weighing Systems



Picture is a representation of actual product.

Load Cell Approvals



Order Information

Load Rating (Per Module)	Part #	Price
Single Module (Does NOT Include Load Cell)		
1,000 lb to 5,000 lb	17812	Consult
10,000 to 25,000 lb	17814	Consult
50,000 lb	17816	Consult
75,000 lb	25346	Consult
3-Module Kit		
1,000 lb	18117	Consult
1,500 lb	18118	Consult
2,000 lb	18119	Consult
2,500 lb	18120	Consult
3,000 lb	18121	Consult
5,000 lb	18122	Consult
10,000 lb	18123	Consult
15,000 lb	18124	Consult
20,000 lb	18125	Consult
25,000 lb	18126	Consult
50,000 lb	18127	Consult
75,000 lb	25348	Consult
4-Module Kit		
1,000 lb	18129	Consult
1,500 lb	18130	Consult
2,000 lb	18131	Consult
2,500 lb	18132	Consult
3,000 lb	18133	Consult
5,000 lb	18134	Consult
10,000 lb	18135	Consult
15,000 lb	18136	Consult
20,000 lb	18137	Consult
25,000 lb	18138	Consult
50,000 lb	18139	Consult
75,000 lb	25349	Consult

VPG Sensortronics 65016 Order Information

Load Rating (Per Module)	Part #	Price
3-Module Kit		
1,000 lb	18189	Consult
1,500 lb	18190	Consult
2,500 lb	18192	Consult
5,000 lb	18194	Consult
10,000 lb	18195	Consult
15,000 lb	18196	Consult
20,000 lb	18197	Consult
25,000 lb	18198	Consult
50,000 lb	18199	Consult
75,000 lb	25350	Consult
4-Module Kit		
1,000 lb	18201	Consult
1,500 lb	18202	Consult
2,500 lb	18204	Consult
5,000 lb	18206	Consult
10,000 lb	18207	Consult
15,000 lb	18208	Consult
20,000 lb	18209	Consult
25,000 lb	18210	Consult
50,000 lb	18211	Consult
75,000 lb	25351	Consult
Dummy Load Cells		
1,000 lb to 5,000 lb	18236	Consult
10,000 lb to 25,000 lb	18237	Consult
50,000 lb	18238	Consult

Complete Kit Includes

- Three or four RL1600 mild steel compression mounts with RL75016 environmentally protected double-ended shear beam load cells
- One JB4SS NEMA Type 4X stainless steel signal trim junction box
- 25 ft of our hostile environment EL147HE SURVIVOR® load cell cable

Standard Features

- Capacities (per module): 1,000 to 75,000 lb
- Coated mild steel construction
- Self-checking, easy-to-use design allows module to be bolted directly to tank leg without requiring additional mounting plates or load buttons
- Double-ended shear beam design, center loaded
- Compatible with VPG® Sensortronics 65016 load cells

Applications

- Medium- to heavy-capacity tanks, bins and hoppers
- Bulk material management

WEIGH MODULES

Shims, Mild Steel

	Part #	Price
1,000 lb to 5,000 lb		
0.0625 in	150844	Consult
0.125 in	150845	Consult
0.250 in	150846	Consult
10,000 lb to 25,000 lb		
0.0625 in	150847	Consult
0.125 in	150848	Consult
0.250 in	150849	Consult
50,000 lb to 75,000 lb		
0.0625 in	150850	Consult
0.125 in	150851	Consult
0.250 in	150866	Consult

RL1600 Series

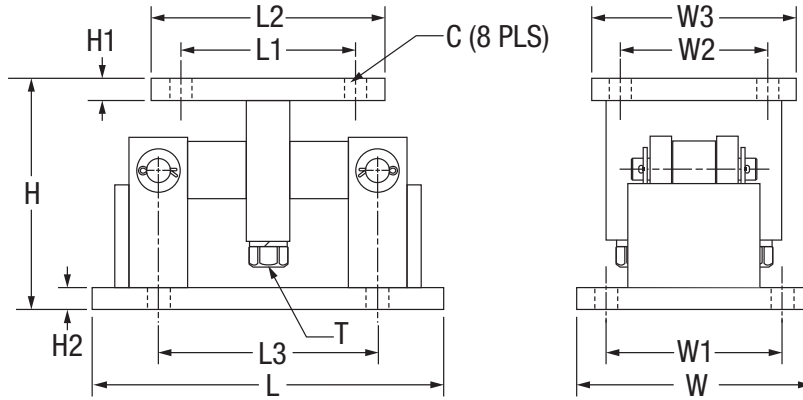
Mild Steel Weigh Modules, Rice Lake Weighing Systems

Load Cell Upgrade

RL75016SS Stainless Steel Load Cells
Three mount kits, 1,000 lb to 25,000 lb added to list price
Four mount kits, 1,000 lb 25,000 lb added to list price
RL75016WHE Stainless Steel Hermetic Load Cells
Three mount kits 1,000 lb to 5,000 lb, 10 k-25 k added to list price
Four mount kits 1,000 lb to 5,000 lb, 10 k-25 k added to list price
<i>Contact factory for a 50,000 lb to 75,000 lb adder for stainless only</i>

Dimensions

Rated Capacity	C	H	H1	H2	L	L1	L2	L3	T	W	W1	W2	W3
1,000 to 5,000	0.56	5.00	0.50	0.50	9.25	2.75	4.00	6.25	1/2-13 UNC	5.00	3.75	2.75	4.00
10,000 to 25,000	0.78	7.87	0.75	0.75	12.00	6.00	8.00	7.50	3/4-10 UNC	8.00	6.00	6.00	8.00
50,000 to 75,000	0.78	9.25	1.00	1.00	16.25	6.50	9.00	11.50	1 1/4-7 UNC	12.00	9.50	6.50	9.00



WEIGH MODULES