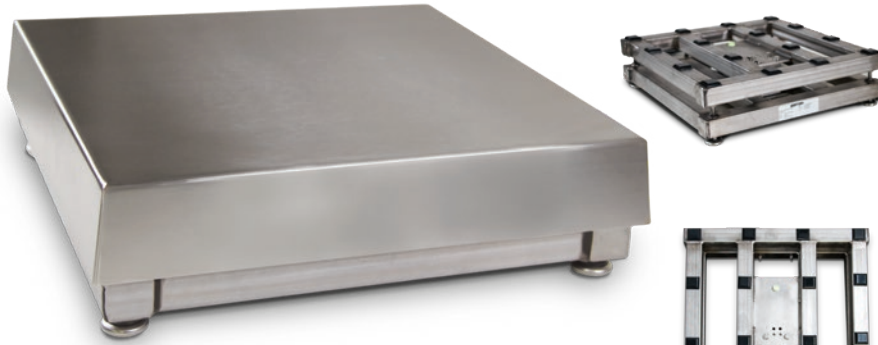


# BenchMark® SS

Stainless Steel Bench Scale

BENCH SCALES



## Approvals



Measurement  
Canada  
Approved

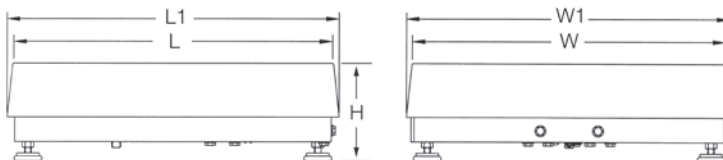


## Part Number/Price

Part #	Capacity	Platform Dimensions (L x W x H)	Est. Weight	Price
186222 †	50 lb (25 kg)	12 x 18 x 4.00 in	37 lb	Consult
186223 †	100 lb (50 kg)	12 x 18 x 4.00 in	37 lb	Consult
18591 †	50 lb (25 kg)	18 x 18 x 5.25 in	68 lb	Consult
18593 †	100 lb (50 kg)	18 x 18 x 5.25 in	68 lb	Consult
18595 †	150 lb (75 kg)	18 x 18 x 5.25 in	68 lb	Consult
18597 †	200 lb (100 kg)	18 x 18 x 5.25 in	68 lb	Consult
18599 †	250 lb (125 kg)	18 x 18 x 5.25 in	68 lb	Consult
18601 †	300 lb (150 kg)	18 x 18 x 5.25 in	68 lb	Consult
18603 †	500 lb (250 kg)	18 x 18 x 5.25 in	68 lb	Consult
18605 ††	1,000 lb (500 kg)	18 x 18 x 5.25 in	68 lb	Consult
18607 †	50 lb (25 kg)	24 x 18 x 5.25 in	78 lb	Consult
18609 †	100 lb (50 kg)	24 x 18 x 5.25 in	78 lb	Consult
18611 †	150 lb (75 kg)	24 x 18 x 5.25 in	78 lb	Consult
18613 †	200 lb (100 kg)	24 x 18 x 5.25 in	78 lb	Consult
18615 †	250 lb (125 kg)	24 x 18 x 5.25 in	78 lb	Consult
18617 †	300 lb (150 kg)	24 x 18 x 5.25 in	78 lb	Consult
18619 †	500 lb (250 kg)	24 x 18 x 5.25 in	78 lb	Consult
18621 ††	1,000 lb (500 kg)	24 x 18 x 5.25 in	78 lb	Consult
18623 †	100 lb (50 kg)	24 x 24 x 5.25 in	84 lb	Consult
18625 †	150 lb (75 kg)	24 x 24 x 5.25 in	84 lb	Consult
18627 †	200 lb (100 kg)	24 x 24 x 5.25 in	84 lb	Consult
18629 †	250 lb (125 kg)	24 x 24 x 5.25 in	84 lb	Consult
18631 †	300 lb (150 kg)	24 x 24 x 5.25 in	84 lb	Consult
18633 †	500 lb (250 kg)	24 x 24 x 5.25 in	84 lb	Consult
18635 ††	1,000 lb (500 kg)	24 x 24 x 5.25 in	84 lb	Consult

## Options/Accessories

Part #	Description	Catalog Page #
Consult	Scale columns	See page 204
Consult	Ball transfer and roller conveyor scale tops	See page 203
Consult	Mobile scale carts	See page 199 to page 202



## Standard Features

- 304 stainless steel frame and cover
- Base design isolates load cell from overloads and shock loads for added durability
- Specially designed adjustable support feet provide exceptional traction and will not scratch surfaces

## Specifications

### Load Cell, NTEP Certified:

IP66 aluminum, environmentally sealed

### Output Impedance:

350 ohm

### Maximum Overload:

150% to 200% depending on capacity

### Overload Protection:

Five-point, independently adjusted

### Scale Frame:

AISI304L, glass bead blasted for even appearance

### Scale Cover:

AISI304L, straight line finish, Ra= 45 +/- 10

### Cable Length:

10 ft (3 m)

### Compensated Temperature Range:

14 °F to 104 °F (-10 °C to 40 °C)

### Warranty:

Two-year limited

### Approvals:

NTEP CC 95-072, Class III, 5,000 d  
Measurement Canada AM-5082

## Dimensions

BenchMark SS			
<b>12 x 18 in</b>			
H	4.00 in	W	18.00 in
L	12.00 in	W1	18.50 in
L1	12.50 in		
<b>18 x 18 in</b>			
H	5.25 in	W	18.00 in
L	18.00 in	W1	18.75 in
L1	18.75 in		
<b>18 x 24 in</b>			
H	5.25 in	W	18.00 in
L	24.00 in	W1	18.75 in
L1	24.75 in		
<b>24 x 24 in</b>			
H	5.25 in	W	24.00 in
L	24.00 in	W1	24.75 in
L1	24.75 in		

Note: 1 in = 25.4 mm