

# Seal Heater Unit

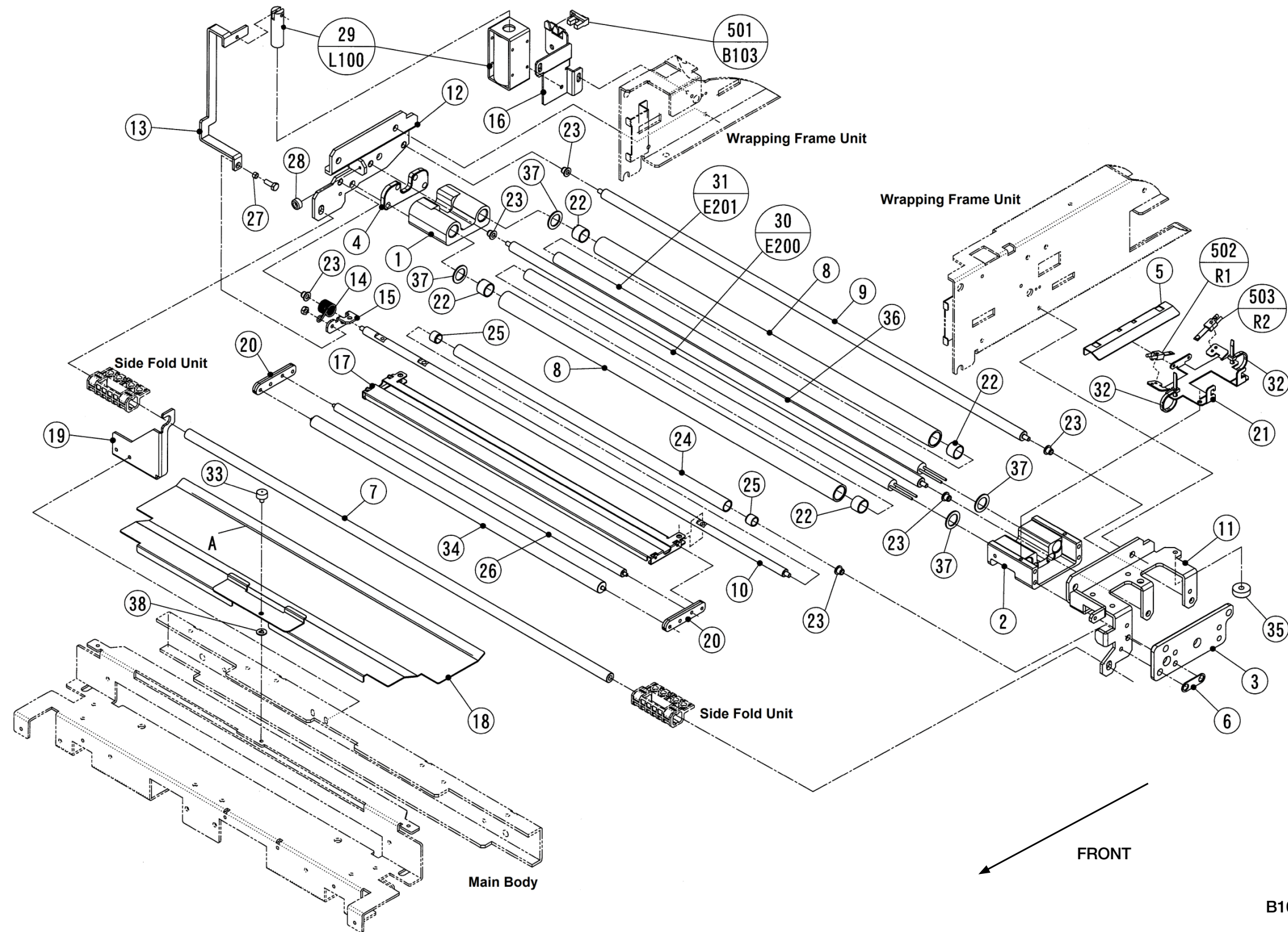
## Part Number/Price

REF #	PART #	DESCRIPTION	QTY	SYNONYM	PRICE
1	<b>209019</b>	Block B, base heater left	1	000-135-7300-01	Consult
2	<b>209020</b>	Block B, base heater right	1	100-006-4810-00	Consult
3	<b>Consult</b>	Plate B, heater	1	000-135-7078-03	Consult
4	<b>Consult</b>	Plate B, heater	1	000-135-7079-07	Consult
5	<b>Consult</b>	Cover, thermistor	1	000-134-8154-00	Consult
6	<b>Consult</b>	Plate A, ground	1	000-134-8331-02	Consult
7	<b>193548</b>	Shaft, slide, side fold front	1	000-130-6847-10	Consult
8	<b>172527</b>	Roller, seal heater, orange, includes 153654	2	000-131-1661-31	Consult
9	<b>172522</b>	Shaft, step type	1	000-130-6848-22	Consult
10	<b>Consult</b>	Shaft, discharge, fulcrum	1	000-130-6849-35	Consult
11	<b>Consult</b>	Bracket, heater unit	1	000-134-8147-62	Consult
12	<b>Consult</b>	Bracket, heater unit	1	000-134-8144-51	Consult
13	<b>Consult</b>	Link, heater, guard	1	000-134-8141-20	Consult
14	<b>172523</b>	Spring, coil	1	000-137-8017-13	Consult
15	<b>208209</b>	Lever, heater guard	1	000-134-8152-49	Consult
16	<b>Consult</b>	Bracket, solenoid, heater guard	1	000-134-8150-24	Consult
17	<b>Consult</b>	Frame, heater guard	1	000-139-2828-30	Consult
18	<b>Consult</b>	Cover, roller, lower	1	000-139-2827-53	Consult
19	<b>Consult</b>	Bracket, linear, front	1	000-134-8918-26	Consult
20	<b>189205</b>	Holder, roller, discharge	2	000-135-7080-20	Consult
21	<b>189206</b>	Bracket, thermistor	1	000-134-8153-43	Consult
22	<b>153654</b>	Bush	4	000-070-5375-09	Consult
23	<b>153628</b>	Bush	6	000-028-1523-01	Consult
24	<b>189207</b>	Roller, discharge	1	000-131-1815-01	Consult
25	<b>189208</b>	Bush	2	000-076-1844-08	Consult
26	<b>188194</b>	Shaft, step, heater guard	1	000-139-2818-21	Consult
27	<b>189279</b>	Collar	1	000-094-0174-15	Consult
28	<b>189111</b>	Rubber pad	1	000-039-8056-01	Consult
29	<b>125701</b>	Solenoid assy, heater guard, L100	1	000-073-7078-01	Consult
30	<b>172524</b>	Heater, seal element, front, E200, 133 ohm	1	100-006-4604-00	Consult
31	<b>172525</b>	Heater, seal element, rear, E201, 133 ohm	1	100-006-4605-00	Consult
32	<b>172526</b>	Accessory, band, tie heat resist	4	000-059-8213-07	Consult
33	<b>200511</b>	Screw, knurled M4x8 mm SST	1	100-002-1760-00	Consult
34	<b>188195</b>	Shaft, step, heater guard	1	000-139-9018-24	Consult
35	<b>189197</b>	Collar, stopper	1	000-112-6600-04	Consult
36	<b>Consult</b>	Shaft, step type	1	000-141-6348-05	Consult
37	<b>153653</b>	Washer, thrust	4	000-073-7143-10	Consult
38	<b>186377</b>	Washer, lock, backing	1	000-015-0783-09	Consult
501	<b>171837</b>	Photo interrupter, trans, straight connector, heater guard up/down, B103	1	000-132-6468-07	Consult
502	<b>153657</b>	Thermistor assy, heater front, R1*, 3.1K ohm	1	000-072-2291-03	Consult
503	<b>157920</b>	Thermistor assy, heater rear, R2*, 3.1K ohm	1	000-072-2292-07	Consult

\* Controlled by A200, [Control Unit - Lift, Lower Right Side on page 66](#)

# Ishida WM-Ai

Seal Heater Unit



B103 - Heater guard up/down