

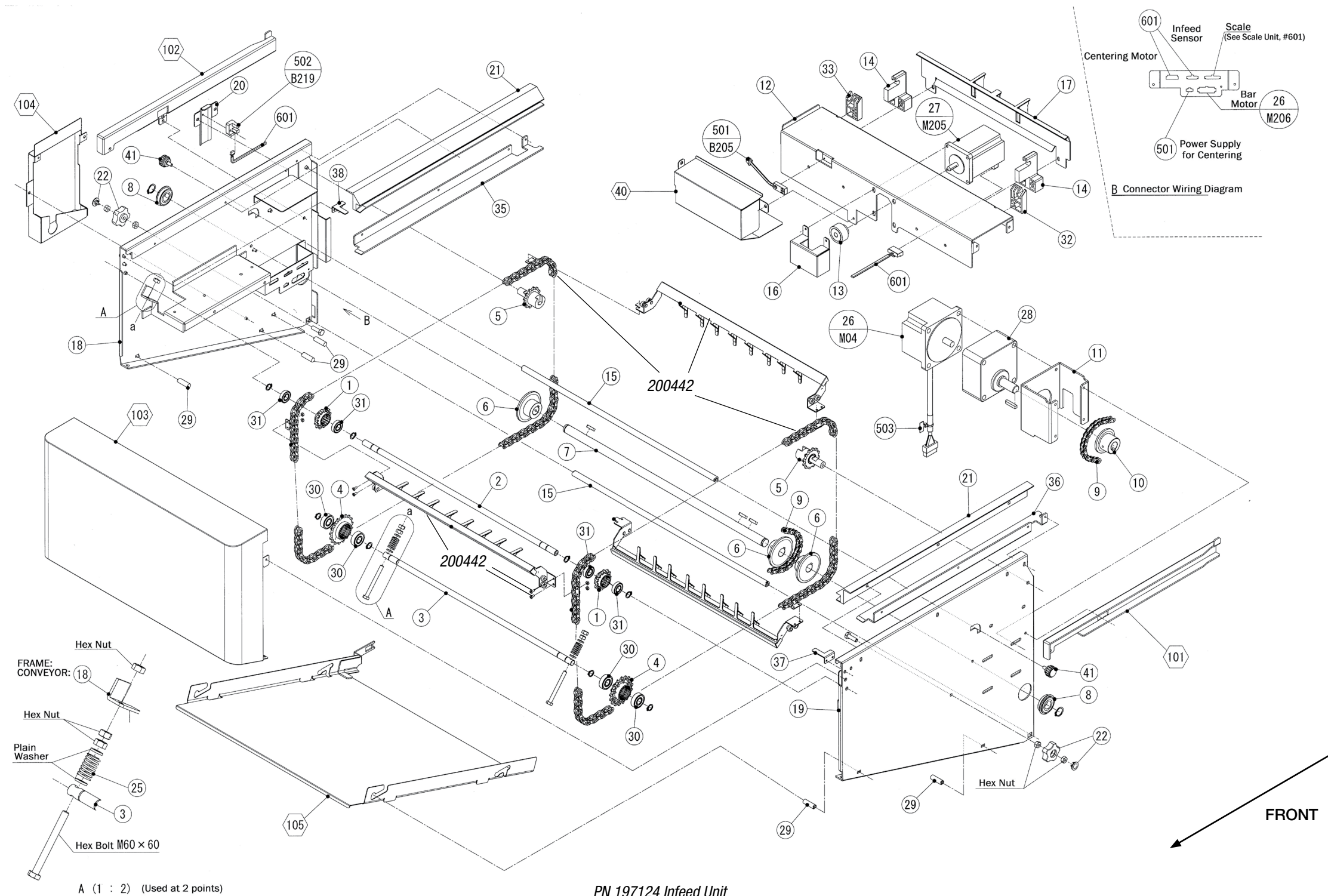
Infeed Unit

Part Number/Price

REF #	PART #	DESCRIPTION	QTY	SYNONYM	PRICE
1	172491	Sprocket, 35, C	2	000-111-8388-04	Consult
2	193544	Shaft, fixed	1	000-139-9177-05	Consult
3	189119	Shaft, tension	1	000-106-6974-25	Consult
4	172496	Sprocket, 35, C	2	000-111-8389-08	Consult
5	172499	Sprocket assy	2	000-076-9971-16	Consult
6	189120	Sprocket, T35, B	3	000-076-9805-11	Consult
7	193545	Shaft, drive	1	000-135-2527-29	Consult
8	106115	Bearing, radial, deep groove	2	000-030-6366-02	Consult
9	172503	Chain, drive, roller	1	100-002-2186-00	Consult
10	189121	Sprocket, T35, B	1	000-135-7309-12	Consult
11	Consult	Bracket, motor, conveyor	1	000-135-0473-42	Consult
12	Consult	Bracket, cover, motor	1	000-135-0135-16	Consult
13	193373	Gear, flat	1	000-076-1963-08	Consult
14	189122	Holder, shaft, lower	2	000-076-9797-05	Consult
15	204448	Threaded rod, round FF	2	000-135-0132-15	Consult
16	Consult	Cover, gear	1	000-072-2200-04	Consult
17	172504	Guide, transfer	1	000-149-6865-12	Consult
18	189123	Frame, conveyor L feed	1	000-135-0496-76	Consult
19	210880	Frame, conveyor R feed	1	000-135-0495-72	Consult
20	Consult	Bracket, sensor, power	1	000-135-0500-22	Consult
21	157850	Guide, pusher, LR	1	000-101-1852-01	Consult
22	47159	Knob w/nut, M6	2	000-000-1543-00	Consult
25	172505	Spring, coil, compressive	2	000-147-3202-08	Consult
26	172506	Motor, DC brushless, infeed drive, kit, M04	1	100-040-0146-00	Consult
27	172507	Motor, stepping, centering, M205	1	000-111-8044-12	Consult
28	172508	Gear head	1	000-140-7032-05	Consult
29	196739	Pin, fulcrum, infeed cleanout cover	5	000-090-0912-09	Consult
—	Consult	Bolt, M4 x 5 mm Hex/Philips head SST		—	Consult
30	84792	Bearing, radial, deep groove	4	000-051-4933-02	Consult
31	47168	Bearing, radial, deep groove	4	000-000-3659-05	Consult
32	189124	Guide, chain	1	000-111-8483-05	Consult
33	189125	Guide, chain	1	000-111-8484-09	Consult
35	Consult	Supporter, rail	1	100-001-6424-00	Consult
36	Consult	Supporter, rail	1	100-001-6425-00	Consult
37	201691	L plate, B rail	1	000-150-3202-06	Consult
38	201692	L plate, B rail	1	000-150-3201-02	Consult
40	Consult	Cover, connector, inside	1	000-135-0483-31	Consult
41	189126	Knob bolt	2	000-135-2530-02	Consult
101	189127	Rail, right	1	000-137-0951-42	Consult
102	189128	Rail, left	1	000-137-0952-45	Consult
103	185534	Cover, conveyor	1	000-137-0949-52	Consult
104	Consult	Cover, harness	1	000-137-0964-23	Consult
105	189129	Cover, lower	1	000-134-8222-38	Consult
501	172509	Sensor, centering, B205	1	000-135-0306-16	Consult
502	104239	Photo interrupter, infeed pusher, home, white conn., B219	1	000-070-5204-14	Consult
503	Consult	Accessory, band, marking tie	1	000-135-2738-00	Consult
601	196493	Harness, C4, centering motor, infeed sensor	1	000-135-0399-12	Consult
ASSY	200442	Pusher: Infeed: Maintenance Kit: qty-3 pushers-171836, qty-2 chains-171835, qty-12 M3x6-187604, qty-12 M3 nut-188649		100-033-6486-00	Consult
	—	171836 Pusher, infeed, SST	3	100-004-7481-00	Consult
	—	171835 Chain, roller, infeed pusher	2	100-004-7503-00	Consult
	—	187604 Hex socket bolt, low head, M3x6, SST	12	000-112-6796-01	Consult
	—	188649 Nut, M3, 1.8 mm thick 18-8, SST	12		Consult
ASSY	197124	Infeed assembly, complete		000-800-0559-78	Consult

Ishida WM-Ai

Infeed Unit



PN 197124 Infeed Unit

B205 - Centering Conveyor, Home Position
B219 - Infeed Pushers, Home Position