

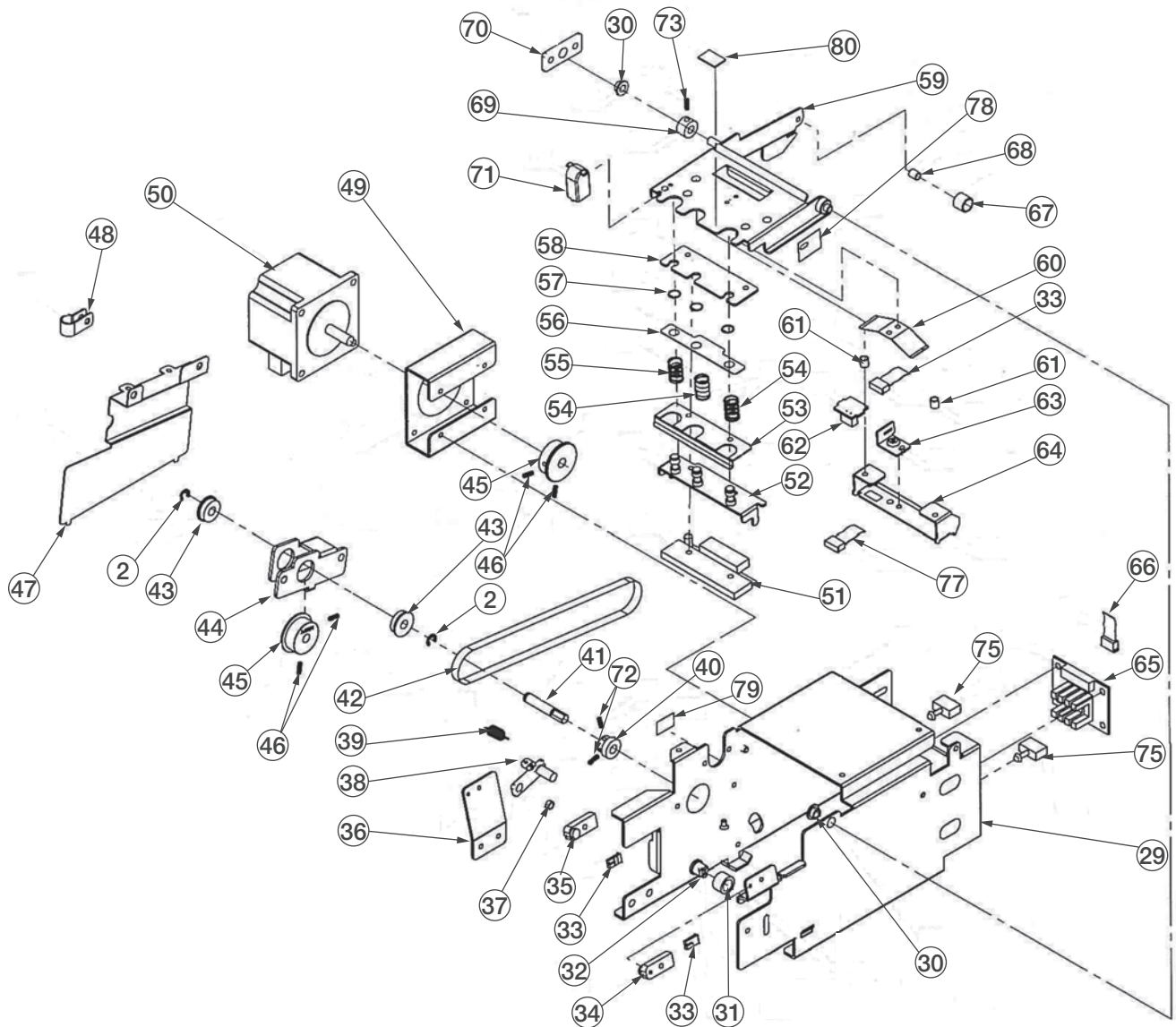
# Uni-7

Pole, Printer



## Part Number/Price

Ref #	Part #	Description	Synonym	Price
2	46986	E-ring, 3 mm M3	000-0287-02	Consult
29	Consult	Frame printer	089-5517-14	Consult
30	180542	Bush	031-9081-00	Consult
31	181100	Roller support cassette	089-5537-00	Consult
32	158806	Pin support cassette	089-5536-06	Consult
33	158582	Harness C4 sensor, orange	089-5629-18	Consult
	193673	Harness C4 sensor, white, from s/n 100237828	400-000-1803-00	Consult
34	87535	Peel sensor, receiver, black, right	066-4500-09	Consult
	193674	Peel sensor; receiver, black, right, from s/n 100237828	400-000-1761-00	Consult
35	87534	Peel sensor, transmitter, grey, left	064-5587-01	Consult
	193675	Peel sensor, transmitter, grey/white, left, from s/n 100237828	400-000-1762-00	Consult
—	195858	Peel sensor harness C2, left-side bypass, old-style orange connector	400-000-3770-00	Consult
—	195857	Peel sensor harness C2, left-side bypass, new-style white connector, from s/n 100237828	400-000-3769-00	Consult
36	Consult	Bracket sensor left	089-5531-08	Consult
37	181101	Collar spacer	089-5038-08	Consult
38	180554	Lever lock head	089-5539-07	Consult
39	181102	Spring coil tension	089-5540-01	Consult
40	167388	Gear flat	089-5523-08	Consult
41	167389	Shaft pulley	089-5530-04	Consult
42	158518	Timing belt pulley S2M	118-7567-01	Consult
43	181103	Bearing large circle	089-5668-04	Consult
44	Consult	Holder pulley	089-5528-06	Consult
45	186908	Timing pulley S2M	089-5524-01	Consult
46	Consult	Screw, set M3x3		Consult
47	Consult	Cover timing belt	089-5535-02	Consult
48	Consult	Cable clamp	089-5731-06	Consult
49	Consult	Bracket motor	089-5529-00	Consult
50	119168	Stepping motor	089-5513-01	Consult
51	119169	Thermal head, CHX56-8359, 1100 ohm	089-5669-08	Consult
—	41732	M4x6 SS w/flange (mounting screws)	000-0237-06	Consult
52	161974	Bracket head	089-5520-16	Consult
53	163391	Cover head	089-5534-09	Consult
	180998	Cutter, label, linerless	089-5078-07	Consult
—	180999	L Plate, B push cutter, linerless	089-6633-08	Consult
54	163392	Spring coil	089-5542-09	Consult
55	163393	Spring coil	089-5541-05	Consult
56	163394	Plate A spring support	089-5521-01	Consult
57	163396	C-ring	089-5836-03	Consult
58	163398	Stay head	089-5519-02	Consult
59	156853	Bracket printer	089-5518-09	Consult
60	180543	Spring plate	089-5533-05	Consult
61	165618	Collar spacer	089-5036-01	Consult
62	87533	Label gap sensor	105-5249-09	Consult
63	168935	Holder label sensor	089-5532-01	Consult
64	168936	Bracket label sensor	089-5522-04	Consult
65	87532	Sensor, cassette number	064-5586-08	Consult
66	199214	Harness C2 cassette	089-5628-05	Consult
67	47481	Stopper	000-9327-01	Consult
68	180544	Collar spacer	089-5037-04	Consult
69	180545	Collar	089-5527-02	Consult
70	Consult	Plate A	089-5526-09	Consult
71	159888	Block B support	089-5538-03	Consult
72	50160	Screw, set M3x6	002-1942-07	Consult
73	84066	Set screw	000-0469-03	Consult
75	Consult	Support	089-5729-08	Consult
77	167053	Harness C2, thermal head	089-5632-10	Consult
78	187229	Plate A	089-5919-00	Consult
79	Consult	Mount base	089-5732-00	Consult
80	Consult	Sheet cushion		Consult



**Printing Scales**