

SINGLE-ENDED BEAM  
**RL30000I**

Alloy Steel, Environmentally Sealed, NTEP Certified 1:5,000 IIIIL Class III Multiple Cell, IP67



Picture is a representation of actual product.

Approvals



Order Information

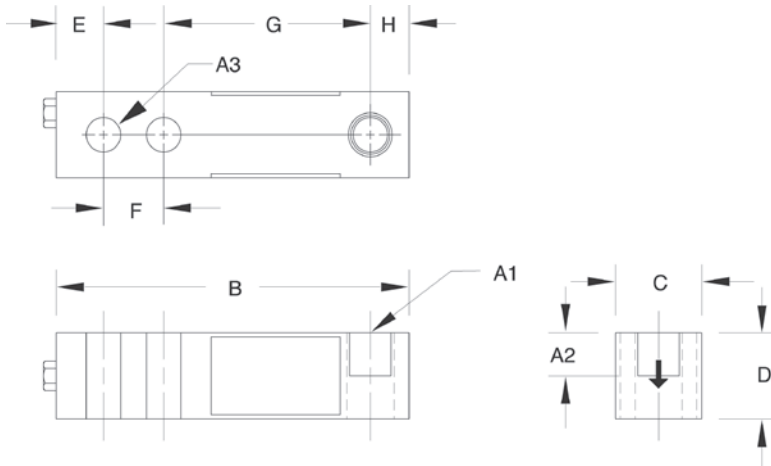
Load Rating	Part #	Est. Weight	Price
<b>NTEP Certified</b>			
1,000 lb	21491	3 lb	Consult
2,000 lb	21493	3 lb	Consult
2,500 lb	21495	3 lb	Consult
3,000 lb	21497	3 lb	Consult
4,000 lb	21498	3 lb	Consult
5,000 lb SE	21500	3 lb	Consult
5,000 lb LE	21501	5 lb	Consult
10,000 lb	21503	5 lb	Consult
<b>Non-NTEP Certified</b>			
250 lb	17341	3 lb	Consult
500 lb	17342	3 lb	Consult
20,000 lb	17109	10 lb	Consult
<b>Conduit Adapter Kit (must be factory installed to maintain warranty)</b>			
3/8-24 nipple	31533*	1 lb	Consult
3/8-24 to 1/4-18 NPT	31534*	1 lb	Consult

SE=small envelope; LE=large envelope

\* PN 31533 and PN 31534 must be installed together to form the Conduit Adapter Kit

Dimensions

Rated Capacity	A1	A2	A3	B	C	D	E	F	G	H
250 to 5,000 SE	1/2-20 UNF	0.60	0.53	5.12	1.25	1.25	0.62	1.00	3.00	0.50
5,000 LE to 10,000	3/4-16 UNF	0.75	0.78	6.75	1.50	1.50	0.75	1.50	3.75	0.75
20,000	1-14 UNF	1.00	1.03	8.75	2.00	2.00	1.00	2.00	4.75	1.00



Interchangeable Products

- VPG® REVERE  
**5123**..... page 262
- VPG® TEDEA-HUNTLEIGH  
**3411**..... page 322
- ARTECH®  
**30310**

Weigh Module Available

- RICE LAKE WEIGHING SYSTEMS  
**RL50210TA**.....page 43
- RICE LAKE WEIGHING SYSTEMS  
**RL1800 Series**..... page 54

Specifications

- Full Scale Output:**  
3.0 mV/V
- Bridge Resistance:**  
350 ohm, nominal
- Material/Finish:**  
High-alloy steel, nickel plated
- Temperature:**  
Compensated range  
14 °F to 104 °F (-10 °C to 40 °C)  
Operating range  
0 °F to 150 °F (-18 °C to 65 °C)
- Seal Type:**  
Environmentally sealed, IP67
- Safe Overload:**  
150% full scale
- Safe Sideload:**  
100% full scale
- Rated Excitation:**  
5 to 10 VAC/DC (15V maximum)
- Combined Error:**  
0.02% full scale
- Insulation Resistance:**  
5,000 megohm
- Deflection at Capacity:**  
250 to 1,000 lb: 0.013 in  
2,000 to 3,000 lb: 0.015 in  
4,000 to 5,000 lb: 0.025 in  
10,000 lb: 0.032 in  
20,000 lb: 0.038 in
- Cable Length:**  
20 ft
- Cable Diameter:**  
0.200 in polyurethane jacket
- Cable Color Code:**  
Red +Excitation  
Black -Excitation  
Green +Signal  
White -Signal
- Warranty:**  
Two-year limited
- Approvals:**  
cFMus  
NTEP 98-043

RICE LAKE  
LOAD CELLS