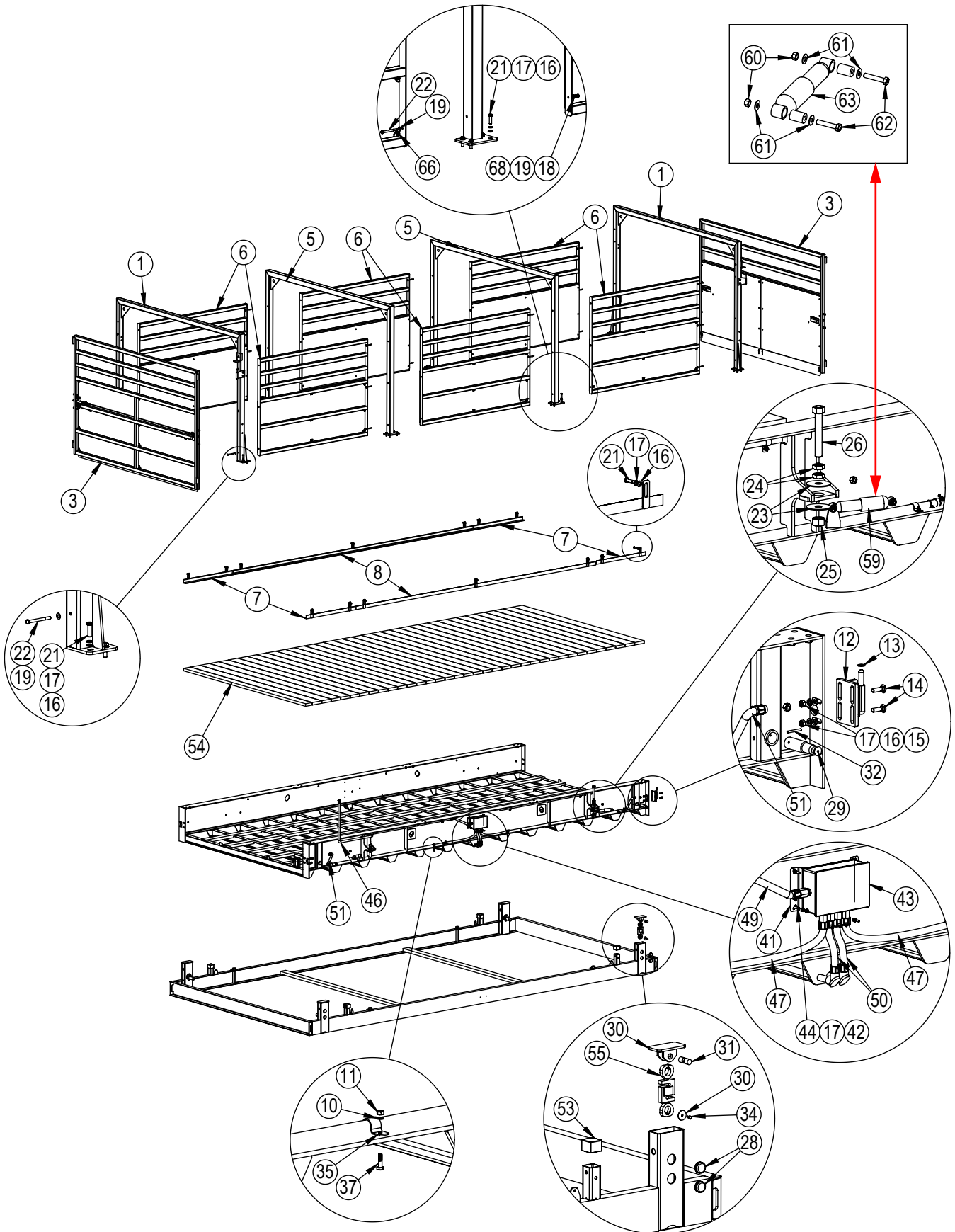


MAS-LC (2019 model)

Load Cell Animal Scale

LIVESTOCK
REPLACEMENT PARTS



MAS-LC (2019 model)

Load Cell Animal Scale



Part Number/Price

| Item # | Part # | Description |
|--------|----------------|--|
| 1 | 185923 | End overhead, 7 ft |
| | 192423 | End overhead, 10 ft |
| 3 | 185926 | Gate assembly, 7 ft |
| | 192424 | Gate assembly, 10 ft |
| 5 | 151169 | Internal overhead, 7 ft |
| | 154678 | Internal overhead, 10 ft |
| 6 | 151174 | Wall segment 18 x 7 (13 ft-qty 4 / 19 ft-qty 6) |
| | 151176 | Panel, 18 x 7 for 151174 |
| | 154095 | Wall segment (15 ft-qty 4 / 22 ft-qty 6) |
| | 154097 | Panel, 20 x 7 for 154095 |
| | 155821 | Wall segment (17 ft-qty 4) |
| | 155823 | Panel, 17 x 8 for 155821 |
| 7 | 186028 | Angle, flooring hold down, 36 in |
| 8 | 192084 | Angle, flooring hold down, 13 ft |
| | 191911 | Angle, flooring hold down, 15 ft |
| | 191568 | Angle, flooring hold down, 17 ft |
| | 186029 | Angle, flooring hold down, 19 ft |
| | 192129 | Angle, flooring hold down, 22 ft |
| 9 | 191611 | Hinge, universal upper |
| 10 | 15147 | Washer, lock 1/4 in regular |
| 11 | 14641 | Nut, hex 1/4-20 NC |
| 12 | 192646 | Hinge, universal lower includes the nuts, bolts, washers, items 15, 16, and 17 |
| 13 | 163215 | Hinge bushing |
| 14 | 174712 | Bolt, carriage 1/2-13 NC |
| 15 | 14672 | Nut, 1/2-13 NC hex steel |
| 16 | 15173 | Washer, plain 1/2 in Type B |
| 17 | 15167 | Washer, lock 1/2 in regular |
| 18 | 15159 | Washer, lock 3/8 regular zinc |
| 19 | 21938 | Washer, plain 3/8 Type A |
| 21 | 121483 | Bolt, cap 1/2-13 NC x 1-3/4 in |
| 22 | 127003 | Screw, cap hex 3/8-4 in grade 5 zinc |
| 23 | 159935 | Washer, plain 1 in ID x 3-1/2 in OD |
| 24 | 14701 | Jam nut hex, 1-8 NC zinc |
| 25 | 45852 | Nut, 1-8 NC heavy hex |
| 26 | F1682RR | Bolt, 1-8 UNC x 6-3/4 in, full thread |
| 27 | 127013 | Screw, cap hex 3/8-16 x 3 in grade 5 zinc |
| 28 | 126789 | Plug, plastic for round 2 in |
| 29 | 153941 | Lower load cell pin |
| 30 | 153943 | Mount, upper load cell pin |
| 31 | 153940 | Upper cell pin |
| 32 | 171983 | Pin, 1/4 in x 2-1/4 in slotted |
| 33 | 174640 | Retainer, lower load cell pin |
| 34 | 118020 | Screw, cap 5/16-18 NC x 5/8 in |
| 35 | 45727 | Strap, conduit 3/4 in zinc |
| 36 | 186458 | Strike plate assembly |
| 37 | 111075 | Bolt, 1/4-20 NC x 1 hex grade 2 galv |
| 40 | 127007 | Screw, cap 1/4-20 x 1/2 in |
| 41 | 185902 | Mount bracket, J-box |

| Item # | Part # | Description |
|--------|---------------|---|
| 42 | 14641 | Nut, 1/4-20 NC hex zinc |
| 43 | 193248 | J-box 4-channel |
| | 89889 | Board only |
| | 89894 | Transient board |
| 44 | 159337 | Bolt, 1/4-20 NF x 1-1/2 hex full thread, SST |
| — | 158143 | Homerun cable |
| — | 127261 | Connector |
| — | 15730 | Dust cap |
| 46 | 188761 | Conduit assembly, 40 in |
| 47 | 188762 | Conduit assembly, 24 in |
| — | 188763 | Conduit assembly, 24 in, Rigid to Flex |
| 49 | 188764 | Conduit assembly, 19-1/2 in |
| 50 | 188765 | Conduit assembly, 10 in |
| 51 | 188766 | Conduit assembly, 16 in |
| 53 | 173125 | Boot for pedestal tube |
| 54 | 191820 | 22 x 10 X-Lug package |
| | 191821 | 22 x 10 X-Plank package |
| | 191822 | 22 x 8 X-Lug package |
| | 191823 | 22 x 8 X-Plank package |
| | 191824 | 19 x 8 X-Lug package |
| | 191825 | 19 x 8 X-Plank package |
| | 191826 | 17 x 8 X-Lug package |
| | 191827 | 17 x 8 X-Plank package |
| | 191828 | 15 x 8 X-Lug package |
| | 191829 | 15 x 8 X-Plank package |
| 55 | 127673 | Load cell assembly, OBW 10,000 lb low profile with eyebolts installed 20 ft cable |
| | 167452 | Load cell assembly, OBW 10,000 lb low profile with eyebolts installed 40 ft cable |
| 59 | 163212 | Shock assembly, MAS-LC |
| 61 | 15161 | Washer, plain STD 3/8 in SST |
| 62 | 22093 | Screw, cap 3/8-16 NC x 2 in hex |
| 63 | 128626 | Damper assembly |
| — | 131374 | Paint, grey beige aerosol |
| 64 | 164363 | Bracket, lift stop |
| 66 | 132917 | Carriage bolt, 1/4-20 NC hex steel |
| 67 | 159783 | Kick panel, 7 ft |
| | 164153 | Kick panel, 10 ft |
| 68 | 132684 | Nut, hex 3/8-16 NC grade 5 zinc |
| 69 | 150715 | Quick link, 3/8 in |
| 70 | 150820 | Eyebolt, 3/8-16 NC x 3 in |
| 71 | 159783 | Panel, gate 7 ft |
| | 164153 | Panel, gate 10 ft |
| 72 | 150716 | Cable, latch 1/4 in OD, 7 ft |
| | 154690 | Cable, latch 1/4 in OD, 9 ft |
| 73 | 141394 | Gate latch assembly |
| | 131702 | Gate latch spring |
| | 160302 | Hairpin, .08 x 1-9/16 in |

LIVESTOCK
REPLACEMENT PARTS