

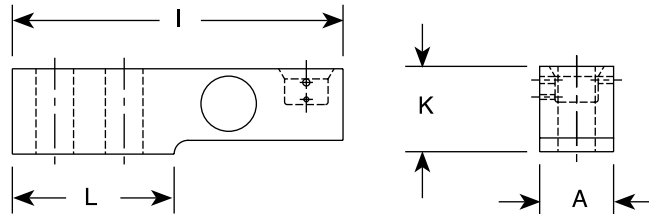
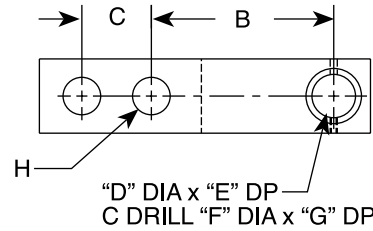
RL30745 Single-Ended Beam, Stainless Steel Welded-seal, IP67 NTEP 1:5000 Class III Multiple



500 lb model



Picture is a representation of actual product



RATED CAPACITY	DIMENSIONS											
	A	B	C	D	E	F	G	H	I	K	L	
lb/inches												
500-4,000	1.20	3.00	1.00	.63	.69	.88	.189	.500	5.25	1.22	2.27	
5,000	1.46	3.00	1.00	.63	.92	.88	.38	.500	5.38	1.40	2.28	
10,000	1.68	3.75	1.50	.88	1.17	1.38	.44	.750	6.87	1.68	3.34	
kg/mm												
226.8-1814.2	30.5	76.2	25.4	16.0	17.5	22.4	4.8	12.7	133.3	30.9	57.6	
2268	37.1	76.2	25.4	16.0	23.4	22.4	9.7	12.7	136.7	35.5	57.9	
4536	42.7	95.3	38.1	22.4	29.7	35.1	11.8	19.1	174.5	42.6	84.8	

SPECIFICATIONS:

Full Scale Output: 2.0 mV/V
Bridge Resistance: 350 ohms, nominal
Material/Finish: Stainless steel
Temperature: Compensated range 0°F to 150°F/-18°C to 65°C
Safe Overload: 150% Full scale
Rated Excitation: 10V DC (15V maximum)
Combined Error: 0.03%
Non-repeatability: 0.01% Full scale

Insulation Resistance: 5000 megohms
Seal Type: Welded-seal, IP67
Cable Length: 30'/9.1 m/15"
Cable Color Code: Green..... + Excitation
 Black..... - Excitation
 White..... + Signal
 Red..... - Signal
 Yellow..... Shield
Warranty: Two-year limited warranty

RL30745 ORDER INFORMATION

Load Rating	Part #	Price
30 ft cables		
500 lb (226.8 kg)	76213	\$450.00
1,250 lb (567.0 kg)	47946	\$450.00
2,500 lb (1,134 kg)	45463	\$450.00
5,000 lb (2,268 kg)	45465	\$575.00
10,000 lb (4,536 kg)	45466	\$695.00
15 ft cables		
500 lb (226.8 kg)	101091	\$410.00
1,250 lb (567.0 kg)	101092	\$410.00
2,500 lb (1,134 kg)	101093	\$410.00
5,000 lb (2,268 kg)	101094	\$535.00
10,000 lb (4,536 kg)	101095	\$660.00

INTERCHANGEABLE PRODUCTS

Manufacturer	Model
Mettler-Toledo®	TB600529-500 lb
Mettler-Toledo	TB600363-1250 lb
Mettler-Toledo	TB600342-2500 lb
Mettler-Toledo	TB600343-5000 lb
Mettler-Toledo	TB600364-10000 lb
HBM	(see page 233) THC