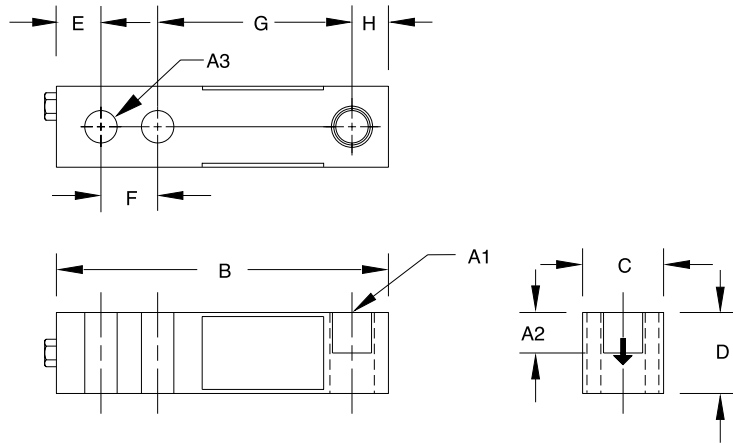
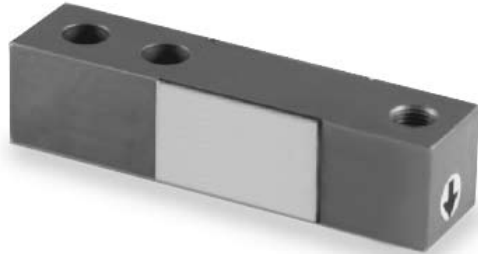


RL39123 Single-Ended Beam, Stainless Steel



Picture is a representation of actual product

RATED CAPACITY	DIMENSIONS									
	A1	A2	A3	B	C	D	E	F	G	H
lb/inches										
250-4000	1/2-20 UNF-2B	.60	.53	5.12	1.25	1.25	.62	1.00	3.00	.50
5000-10,000	3/4-16 UNF-2B	.75	.78	6.75	1.50	1.50	.75	1.50	3.75	.75
kg/mm										
113.4-1814.4	1/2-20 UNF-2B	15.2	13.5	130.1	31.8	31.8	15.8	25.4	76.2	12.7
2268.0-4535.9	3/4-16 UNF-2B	19.1	19.8	171.5	38.1	38.1	19.1	38.1	95.3	19.1
6803.9	1-12 UNF-2B	25.4	26.2	222.3	50.8	50.8	25.4	50.8	120.7	25.4

SPECIFICATIONS:

Full Scale Output:	3.0 mV/V	Hysteresis:	0.02% Full scale
Bridge Resistance:	350 ohms, nominal	Insulation Resistance:	5000 megohms
Material/Finish:	Stainless steel	Deflection at Capacity:	250-1000 lb = .013"/.33 mm, 2000-3000 lb = .015"/.38 mm, 4000-5000 lb = .025"/.64 mm, 10,000 lb = .32"/.81 mm, 15,000-20,000 lb = .038"/.97 mm
Temperature:	Compensated range 0°F to 150°F/-18°C to 65°C	Cable Length:	20'/6.1 m
Seal Type:	Environmentally-sealed	Cable Color Code:	Red + Excitation Black - Excitation Green + Signal White - Signal
Safe Overload:	150% Full scale	Warranty:	Two-year limited warranty
Rated Excitation:	10V DC (15V maximum)		
Nonlinearity:	0.03% Full scale		

RL39123 ORDER INFORMATION

Load Rating	Part #	Price
250 lb (113.4 kg)	17386	\$350.00
500 lb (226.8 kg)	17387	\$350.00
1,000 lb (453.6 kg)	17189	\$350.00
2,500 lb (1134.0 kg)	17191	\$350.00
4,000 lb (1814.4 kg)	17193	\$350.00
5,000 lb (2268.0 kg)	17194	\$420.00
10,000 lb (4535.9 kg)	17195	\$420.00
Conduit Adapter Kit* (must be factory installed to maintain warranty)		
3/8-24 Nipple	31533*	\$27.00
3/8-24 to 1/4-18 NPT	31534*	\$27.00

* Parts #31533 and #31534 must be installed together to form the Conduit Adapter Kit

INTERCHANGEABLE PRODUCTS

Manufacturer	Model
Vishay Revere Transducers	(see page 265) 9123
Artech	SS30310
HBM	(see page 232) B35

WEIGH MODULE AVAILABLE

Model	Page #
RL50210 TA	32
RL1800 Series	44