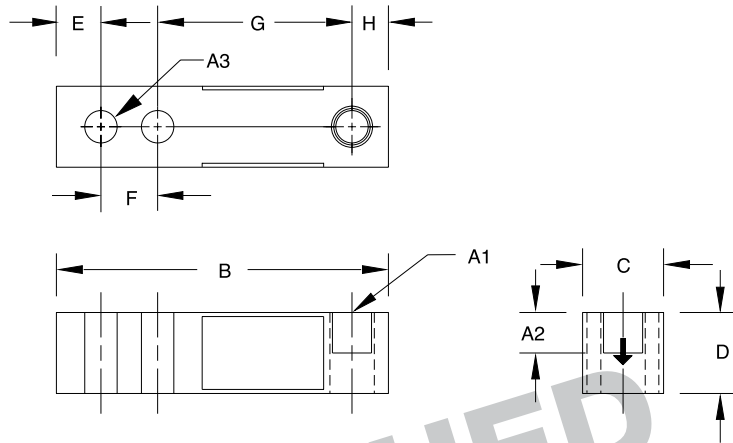


RL65044 Single-Ended Beam, Alloy Steel



Picture is a representation of actual product



RATED CAPACITY	DIMENSIONS									
	A1	A2	A3	B	C	D	E	F	G	H
lb/inches										
4000	1/2-20 UNF-2B	.60	.53	6.00	1.25	1.25	.61	1.75	3.00	.63
kg/mm										
1814.4	1/2-20 UNF-2B	15.2	13.5	152.4	31.8	31.8	15.5	44.5	76.2	16.0

SPECIFICATIONS:

Full Scale Output:	3.0 mV/V	Nonlinearity:	0.01% Full scale
Bridge Resistance:	350 ohms, nominal	Hysteresis:	0.01% Full scale
Material/Finish:	High-alloy steel, nickel plated	Insulation Resistance:	5000 megohms
Temperature:	Compensated range 0°F to 150°F/-18°C to 65°C	Cable Length:	20'/6.1 m
Seal Type:	Environmentally-sealed	Cable Color Code:	Red + Excitation Black - Excitation Green + Signal White - Signal
Safe Overload:	150% Full scale	Warranty:	Two-year limited warranty
Rated Excitation:	10V DC (15V maximum)		

RL65044 ORDER INFORMATION

Load Rating	Part #	Price
4000 lb (1814.4 kg)	17110	\$595.00

INTERCHANGEABLE PRODUCTS

Manufacturer	Model
Electroscale	017116-002
Electroscale	Slimline Series
HBM	SBTE