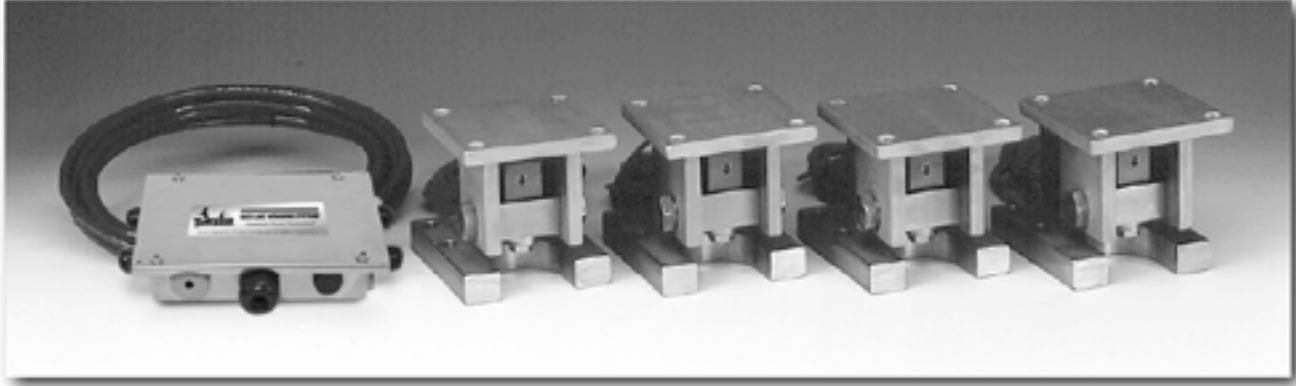


SURVIVOR® HE Weigh Modules

1855HE Medium-Capacity Weigh Modules



Picture is a representation of actual product

The internal height adjustment feature of the 1855HE reduces the need for shims or external hardware, simplifying installation. The standard conduit adapter allows for connection to conduit for cable protection. With standard NTEP-certified, 1:5000 division class III load cells, the 1855HE provides an accurate weighing system when properly installed. Highly versatile, the 1855HE offers worry-free operation in a wide variety of rugged applications.

Load Cell Certifications:



IP67



Complete Kit Includes:

- 1 JB4SS NEMA 4X stainless steel signal-trim junction box
- 3 or 4 1855HE stainless steel compression mounts
- 3 or 4 RL35082 stainless steel, welded seal single-ended beam load cells
- 25' of our Hostile Environment EL147HE SURVIVOR® load cell cable

APPLICATIONS:

- Medium-capacity hoppers, bins & tanks
- Chemical batching/blending
- Fertilizer blending

STANDARD FEATURES:

- All stainless steel construction
- Welded seal, stainless steel load cells, IP67, guaranteed waterproof
- NTEP-certified load cells, 5000d, Class III Multiple Cell
- Bolt-in-place design; module bolts directly to tank leg without requiring additional load buttons or mounting plates
- Self-checking design with lift-off/tip-over protection
- 2-year limited warranty

OPTIONAL FEATURES:

- RL35082 IP66/68 load cells available

www.rlws.com

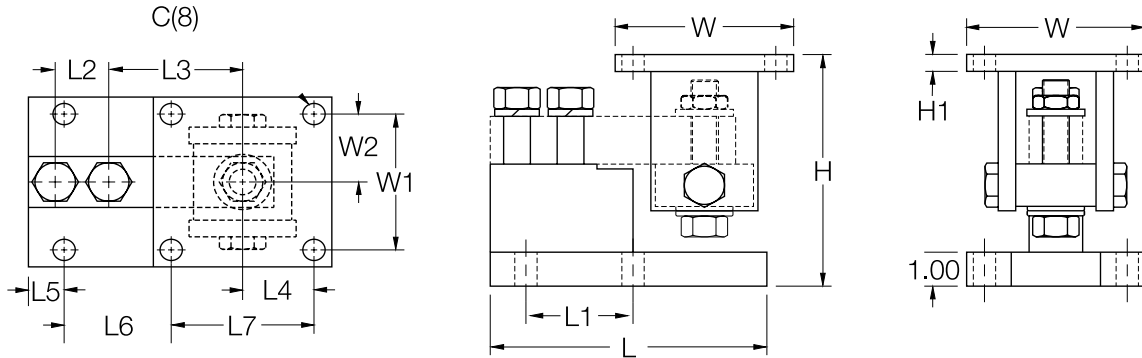
USA: 800-472-6703 • CANADA/MEXICO: 800-321-6703 • INTERNATIONAL: 715-234-9171

© 2006 Rice Lake Weighing Systems • January 1, 2006 • Prices and specifications subject to change without notice

1855HE Specifications

**Complete Kit!
Compare
& Save!**

SURVIVOR Weigh Modules



RATED CAPACITY	DIMENSIONS													
	C	H MIN/MAX	H1	L	L1	L2	L3	L4	L5	L6	L7	W	W1	W2
lb/inches														
1000-4000	.62	5.25/5.56	.50	6.00	2.00	1.00	3.00	2.00	.68	1.94	4.00	5.00	4.00	2.00
5000-10,000	.62	6.12/6.62	.50	7.75	3.00	1.50	3.75	2.00	1.03	2.97	4.00	5.00	4.00	2.00
kg/mm														
453.6-1814.4	15.8	133.4/141.2	12.7	152.4	50.8	25.4	76.2	50.8	17.3	49.3	101.6	127.0	101.6	50.8
2268.0-4535.9	15.8	155.4/168.1	12.7	196.9	76.2	38.1	95.3	50.8	26.2	75.4	101.6	127.0	101.6	50.8

1855HE SINGLE MODULE ORDER INFORMATION

Load Rating (per module)	Part #	Price
Single Modules (Includes Load Cell)		
1000 lb (453.6 kg)	32975	\$895.00
2500 lb (1134.0 kg)	32976	\$895.00
4000 lb (1814.4 kg)	32977	\$895.00
5000 lb (2268.0 kg)	32978	\$995.00
10,000 lb (4535.9 kg)	32979	\$995.00

1855HE KIT ORDER INFORMATION

Load Rating (per module)	Part #	Price
3-Module Kit		
1000 lb (453.6 kg)	30390	\$2,885.00
2500 lb (1134.0 kg)	30388	\$2,885.00
4000 lb (1814.4 kg)	30386	\$2,885.00
5000 lb (2268.0 kg)	30384	\$3,185.00
10,000 lb (4535.9 kg)	30382	\$3,185.00
4-Module Kit		
1000 lb (453.6 kg)	30389	\$3,780.00
2500 lb (1134.0 kg)	30387	\$3,780.00
4000 lb (1814.4 kg)	30385	\$3,780.00
5000 lb (2268.0 kg)	30383	\$4,180.00
10,000 lb (4535.9 kg)	30381	\$4,180.00