

## Compression Canisters

1200, Alloy Steel/Aluminum ..... Page 254



The 1200 Series' compact design permits smaller, more compact testing machines, portability and allows for weighing systems of substantially smaller dimensions. Resistance to extraneous forces produces high fatigue life, permits less stringent mounting alignment, and reduces the possibility of reading errors. Capacities from 1000 to 100,000 lb (453.6 to 45,359.2 kg). Complete with 10'3.1 m of load cell cable.

3200, Stainless Steel ..... Page 255



The 3200 Series stainless steel load cells are designed specifically for difficult applications in harsh environments. These units incorporate welded stainless steel diaphragms to resist corrosion and to seal against moisture intrusion. These load cells provide high accuracy, resistance to off-center loads with minimum error, excellent temperature specifications, and low height envelope for ease of installation. Capacities from 5000 to 100,000 lb (2268.0 to 45,359.2kg). Complete with 20'6.1 m of load cell cable.

Interface

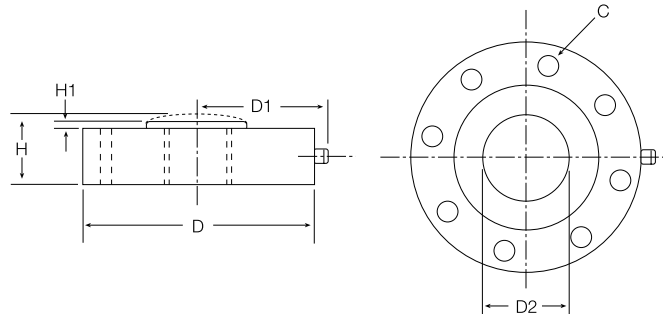
*Don't see the specific Interface product you desire?*  
**Call us for a quote. The full line of quality Interface products is available to you from Rice Lake Weighing Systems.**

## 1200 Series Compression Canister, Low Profile Alloy Steel/Aluminum



Model 1211 shown

Picture is a representation of actual product



RATED CAPACITY	C	DIMENSIONS					H1
		D	D1	D2	H		
<b>lb/inches</b>							
1000-10,000	.28 Dia. 8 Holes	4.12	2.63	1.34	1.37	.12	
25,000-50,000	.34 Dia. 4 Holes	4.75	2.95	1.57	1.75	.12	
100,000	.47 Dia. 12 Holes	7.50	4.32	3.12	2.25	.25	
<b>kg/mm</b>							
453.6-4535.9	7.1 Dia. 8 Holes	104.6	66.8	34.0	34.8	3.0	
11,339.8-22,679.6	8.6 Dia. 4 Holes	120.7	74.9	39.9	44.5	3.0	
45,359.2	11.9 Dia. 12 Holes	190.5	109.7	79.2	57.2	6.4	

### SPECIFICATIONS:

<b>Full Scale Output:</b>	2.0 mV/V (1000-2000 lb) 4.0 mV/V (5000-100,000 lb)	<b>Hysteresis:</b>	0.02-0.04% Full scale
<b>Bridge Resistance:</b>	350 ohms, nominal	<b>Insulation Resistance:</b>	5000 megohms
<b>Material/Finish:</b>	1000-2000 lb - Aluminum 5000-100,000 lb - Alloy steel	<b>Seal Type:</b>	Environmentally sealed
<b>Temperature:</b>	Compensated range 15°F to 115°F/-9°C to 46°C	<b>Cable Length:</b>	10'/3.1 m
<b>Safe Overload:</b>	150% Full scale	<b>Cable Color Code:</b>	Red ..... + Excitation Black ..... - Excitation Green ..... + Signal White ..... - Signal
<b>Rated Excitation:</b>	10V DC (20V maximum)	<b>Warranty:</b>	2-year limited warranty
<b>Nonlinearity:</b>	0.05% Full scale		

### 1200 ORDER INFORMATION

Load Rating	Part #	Price
<b>Aluminum</b>		
1000 lb (453.6 kg)	36132	\$725.00
2000 lb (907.2 kg)	36133	\$725.00
<b>Alloy Steel</b>		
5000 lb (2268.0 kg)	36134	\$895.00
10,000 lb (4535.9 kg)	36135	\$895.00
25,000 lb (11,339.8 kg)	36136	\$975.00
50,000 lb (22,679.6 kg)	36137	\$975.00
100,000 lb (45,359.2 kg)	36138	\$1,850.00

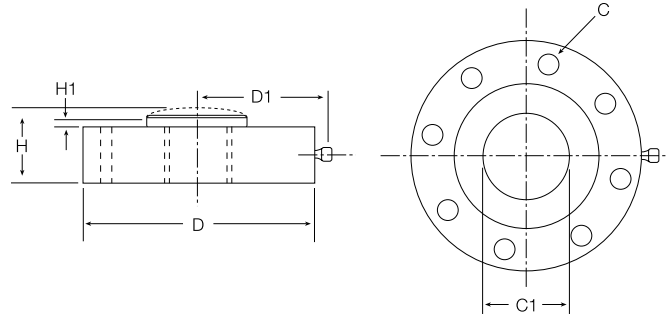
Consult factory for load cell bases

## 3200 Compression Canister, Low Profile Stainless Steel, Hermetically sealed, IP66/68



Model 3211 shown

Picture is a representation of actual product



RATED CAPACITY	DIMENSIONS					
	C	C1	D	D1	H	H1
<b>lb/inches</b>						
5000-10,000	.28 Dia. 8 Holes	1.34	4.12	2.56	1.37	.12
25,000-50,000	.34 Dia. 4 Holes	1.57	4.75	2.87	1.75	.12
100,000	.47 Dia. 12 Holes	3.12	7.50	4.25	2.25	.25
<b>kg/mm</b>						
2268.0-4535.9	7.1 Dia. 8 Holes	34.0	104.6	65.0	34.8	3.0
11,339.8-22,679.6	8.6 Dia. 4 Holes	39.9	120.7	72.9	44.5	3.0
45,359.2	11.9 Dia. 12 Holes	79.2	190.5	108.0	57.2	6.4

### SPECIFICATIONS:

<b>Full Scale Output:</b>	4.0 mV/V	<b>Insulation Resistance:</b>	5000 megohms
<b>Bridge Resistance:</b>	350 ohms, nominal	<b>Seal Type:</b>	Hermetically sealed
<b>Material/Finish:</b>	Stainless steel	<b>Cable Length:</b>	20'±6.1m
<b>Temperature:</b>	Compensated range 15°F to 115°F/-9°C to 46°C	<b>Cable Color Code:</b>	Red..... + Excitation Black..... - Excitation Green..... + Signal White..... - Signal
<b>Safe Overload:</b>	150% Full scale	<b>Warranty:</b>	2-year limited warranty
<b>Rated Excitation:</b>	10V DC (20V maximum)		
<b>Nonlinearity:</b>	0.05% Full scale		
<b>Hysteresis:</b>	0.04% Full scale		

### 3200 ORDER INFORMATION

Load Rating	Part #	Price
5000 lb (2268.0 kg)	36140	\$1,095.00
10,000 lb (4535.9 kg)	36141	\$1,095.00
25,000 lb (11,339.8 kg)	36142	\$1,295.00
50,000 lb (22,679.6 kg)	36143	\$1,295.00
100,000 lb (45,359.2 kg)	36144	\$2,450.00

Consult factory for load cell bases