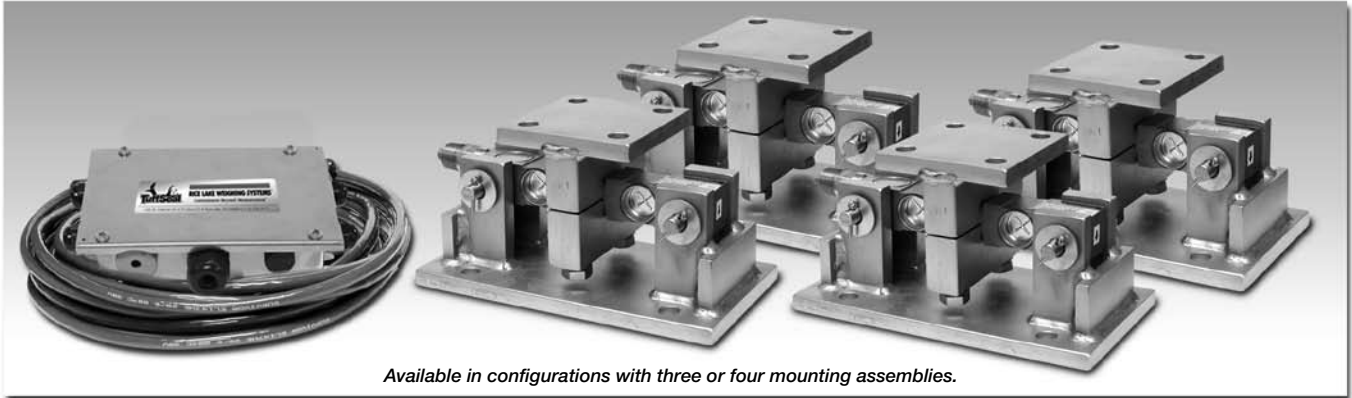


SURVIVOR® HE Weigh Modules

RL1600 HE Series Medium-Capacity Weigh Modules



Available in configurations with three or four mounting assemblies.

Picture is a representation of actual product

The RL1600 HE Series Mounting Module Kit utilizes several Rice Lake Weighing Systems components to provide an unmatched level of performance in tank and hopper weighing applications. The RL1600 HE Series kit is ideally suited for indoor and outdoor process control operations in the medium-capacity ranges. Each module incorporates self-checking capabilities for thermal expansion and contraction.

Load Cell Certifications:



Complete Kit Includes:

- 1 JB4SS NEMA 4X stainless steel signal trim junction box
- 3 or 4 RL1600 stainless steel compression mounts
- 3 or 4 RL75016 WHE stainless steel, hermetically sealed double-ended shear beam load cells (see page 140)
- 25' of our Hostile Environment EL147HE SURVIVOR® load cell cable

APPLICATIONS:

- Medium-capacity tanks, bins and hoppers
- Bulk material management
- Ingredient batching, mixing and blending

STANDARD FEATURES:

- Capacities (per module): 1000-25,000 lb (453.6-11,339.8 kg)
- All stainless steel construction
- Self-checking easy-to-use design allows module to be bolted directly to tank leg without requiring additional mounting plates or load buttons
- Hermetically-sealed IP66/68 protected load cells
- Double-ended shear beam design, center loaded

Fabricated stainless steel module with RL75016 WHE double-ended beam load cell. Refer to page 141 for load cell specifications.



www.ricelake.com/loadcells

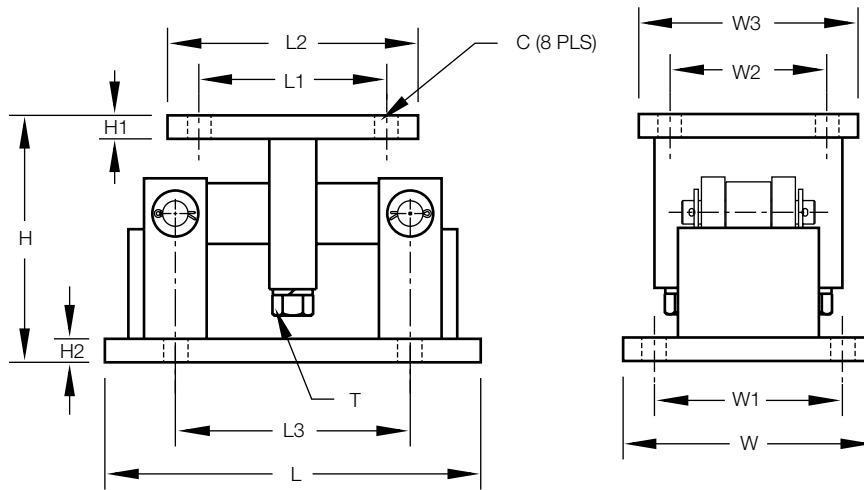
USA: 800-472-6703 • CANADA/MEXICO: 800-321-6703 • INTERNATIONAL: 715-234-9171

© 2008 Rice Lake Weighing Systems • November 15, 2008 • Prices and specifications subject to change without notice. Visit ricelake.com/loadcells for current prices.

RL1600 HE Series Specifications

**Complete Kit!
Compare
& Save!**

SURVIVOR Weigh Modules



RATED CAPACITY	DIMENSIONS												
	C	H	H1	H2	L	L1	L2	L3	T	W	W1	W2	W3
lb/inches													
1000-5000	.56	5.00	.50	.50	9.25	2.75	4.00	6.25	1/2-13 UNC	5.00	3.75	2.75	4.00
10,000-25,000	.78	7.87	.75	.75	12.00	6.00	8.00	7.50	3/4-10 UNC	8.00	6.00	6.00	8.00
kg/mm													
453.6-2268.0	14.2	127.0	12.7	12.7	235.0	69.9	101.6	158.8	1/2-13 UNC	127.0	95.3	69.9	101.6
4535.9-11,339.8	19.8	199.9	19.1	19.1	304.8	152.4	203.2	190.5	3/4-10 UNC	203.2	152.4	152.4	203.2

RL1600 HE ORDER INFORMATION

Load Rating (Per Module)	Part #	Price
3-Module Kit		
1000 lb (453.6 kg)	46723	\$3,525.00
2500 lb (1134.0 kg)	46724	\$3,525.00
5000 lb (2268.0 kg)	46725	\$3,525.00
10,000 lb (4535.9 kg)	46726	\$4,925.00
15,000 lb (6803.9 kg)	46727	\$4,925.00
20,000 lb (9071.9 kg)	84664	\$4,925.00
25,000 lb (11,339.8 kg)	46728	\$4,925.00
4-Module Kit		
1000 lb (453.6 kg)	46729	\$4,755.00
2500 lb (1134.0 kg)	46730	\$4,755.00
5000 lb (2268.0 kg)	46731	\$4,755.00
10,000 lb (4535.9 kg)	46732	\$6,955.00
15,000 lb (6803.9 kg)	46733	\$6,955.00
20,000 lb (9071.9 kg)	84665	\$6,955.00
25,000 lb (11,339.8 kg)	46734	\$6,955.00
Single Module (Does not include load cell)		
1000 - 5000 lb (453.6 - 2268.0 kg)	17813	\$565.00
10,000 - 25,000 lb (4535.9 - 11,339.8 kg)	17815	\$1,095.00
Dummy Load Cells (Mild Steel)		
1000 - 5000 lb (453.6 - 2268.0 kg)	18236	\$20.00
10,000 - 25,000 lb (4535.9 - 11,339.8 kg)	18237	\$35.00
Equalizer Pads		
1000 lb - 5000 lb	67152	\$35.00
10,000 lb - 25,000 lb	67153	\$50.00

www.ricelake.com/loadcells

USA: 800-472-6703 • CANADA/MEXICO: 800-321-6703 • INTERNATIONAL: 715-234-9171

© 2008 Rice Lake Weighing Systems • November 15, 2008 • Prices and specifications subject to change without notice. Visit ricelake.com/loadcells for current prices.