

SURVIVOR® HE Weigh Modules

2100HE Heavy-Capacity Weigh Modules



Picture is a representation of actual product

Incorporating an articulating load plate, hardened load pin and double-ended beam load cell into one simple design, the 2100HE tolerates eccentric loads and side loads of up to 100% of capacity.

The 2100HE comes standard with NTEP-certified, 1:5000 division class III/L load cells, yielding up to 0.02% total error. An integral conduit adapter offers added washdown protection. These standard features give the 2100HE accuracy and dependability in one heavyweight package.

The simple load introduction and load cell design provides consistent accuracy in washdown applications, making the 2100HE ideal for high-capacity hostile environments.

Load Cell Certifications:



Complete Kit Includes:

- 1 JB4SS NEMA 4X stainless steel signal-trim junction box
- 3 or 4 2100HE stainless steel compression mounts
- 3 or 4 RL75060S stainless steel, welded seal double-ended beam load cells (see page 142)
- 25' of our Hostile Environment EL147HE SURVIVOR® load cell cable

APPLICATIONS:

- Heavy-capacity tanks, blenders, reactors and bulk inventory management
- Petroleum refining process control
- Chemical blending/batching
- Hostile environment truck and railroad track weighing

STANDARD FEATURES:

- All stainless steel construction
- Welded seal, stainless steel load cells, IP67, guaranteed waterproof
- NTEP-certified load cells, 5000d, Class III/L/10,000d, Class III/L Multiple Cell
- Bolt-in-place design; module bolts directly to tank leg without requiring additional load buttons or mounting plates
- Self-checking design with lift-off/tip-over protection
- 2-year limited warranty

www.ricelake.com/loadcells

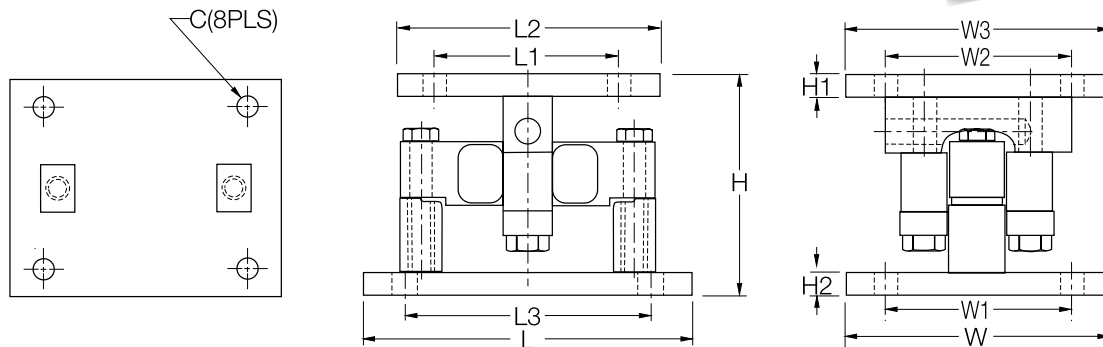
USA: 800-472-6703 • CANADA/MEXICO: 800-321-6703 • INTERNATIONAL: 715-234-9171

© 2008 Rice Lake Weighing Systems • November 15, 2008 • Prices and specifications subject to change without notice. Visit ricelake.com/loadcells for current prices.

2100HE Specifications

**Complete Kit!
Compare
& Save!**

SURVIVOR Weigh Modules



RATED CAPACITY	DIMENSIONS											
	C	H	H1	H2	L	L1	L2	L3	W	W1	W2	W3
lb/inches												
20,000-25,000	.78	6.85	.75	.75	10.00	6.00	8.00	7.50	8.00	6.00	6.00	8.00
35,000-100,000	1.13	9.42	1.00	1.00	14.00	6.50	9.00	11.50	10.00	7.50	6.50	9.00
kg/mm												
9071.9-11,339.8	19.8	174.0	19.1	19.1	254.0	152.4	203.2	190.5	203.2	152.4	152.4	203.2
15,875.7-45,359.2	28.7	239.3	25.4	25.4	355.6	165.1	228.6	292.1	254.0	190.5	165.1	228.6

2100HE SINGLE MODULE ORDER INFORMATION

Load Rating (per module)	Part #	Price
Single Module (Includes Load Cell)		
20,000 lb (9071.8 kg)	32951	\$1,625.00
25,000 lb (11,339.8 kg)	65541	\$1,625.00
35,000 lb (15,875.7 kg)	32952	\$2,495.00
50,000 lb (22,679.6 kg)	32953	\$2,495.00
60,000 lb (27,215.5 kg)	32954	\$2,495.00
75,000 lb (34,019.4 kg)	32955	\$2,495.00
100,000 lb (45,359.2 kg)	32956	\$4,295.00

2100HE KIT ORDER INFORMATION

Load Rating (per module)	Part #	Price
3-Module Kit		
20,000 lb (9071.8 kg)	32970	\$5,025.00
25,000 lb (11,339.8 kg)	65984	\$5,025.00
35,000 lb (15,875.7 kg)	32969	\$7,655.00
50,000 lb (22,679.6 kg)	32968	\$7,655.00
60,000 lb (27,215.5 kg)	32967	\$7,655.00
75,000 lb (34,019.4 kg)	32966	\$7,655.00
100,000 lb (45,359.2 kg)	32965	\$12,500.00
4-Module Kit		
20,000 lb (9071.8 kg)	32964	\$6,700.00
25,000 lb (11,339.8 kg)	65983	\$6,700.00
35,000 lb (15,875.7 kg)	32963	\$10,140.00
50,000 lb (22,679.6 kg)	32962	\$10,140.00
60,000 lb (27,215.5 kg)	32961	\$10,140.00
75,000 lb (34,019.4 kg)	32960	\$10,140.00
100,000 lb (45,359.2 kg)	32959	\$16,540.00

www.ricelake.com/loadcells

USA: 800-472-6703 • CANADA/MEXICO: 800-321-6703 • INTERNATIONAL: 715-234-9171

© 2008 Rice Lake Weighing Systems • November 15, 2008 • Prices and specifications subject to change without notice. Visit ricelake.com/loadcells for current prices.