

# Weigh Modules • Tank and Hopper Kits

## 220 UNIVERSAL MOUNT Stainless Steel Weigh Modules, Vishay Tedea-Huntleigh



Available in configurations with three or four mounting assemblies.

Picture is a representation of actual product

The 220 Universal Mount is designed to be used with the Vishay Tedea-Huntleigh Model 220 load cell. The mount incorporates built-in jacking bolts to prevent damage to the load cell during installation. Its stainless steel construction is designed to be used in the harshest of environments.

### Complete Kit Includes:

- 1 JB4SS NEMA 4X stainless steel signal trim junction box
- 3 or 4 220 stainless steel compression mounts
- 3 or 4 220 stainless steel hermetically-sealed compression disk load cells
- 25' of our Hostile Environment EL147HE SURVIVOR® load cell cable

Load Cell Certifications:



*Module with hermetically-sealed 220 compression load cell. Refer to next page for load cell specifications.*



### APPLICATIONS:

- Medium- to high-capacity tanks, bins and hoppers
- Washdown or corrosive applications
- Process control and batch weighing

### STANDARD FEATURES:

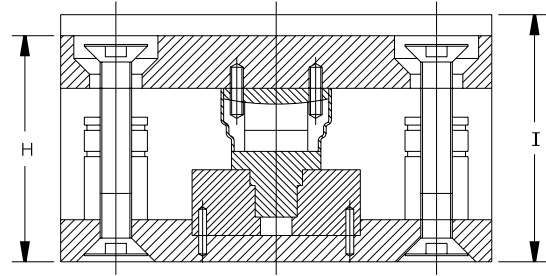
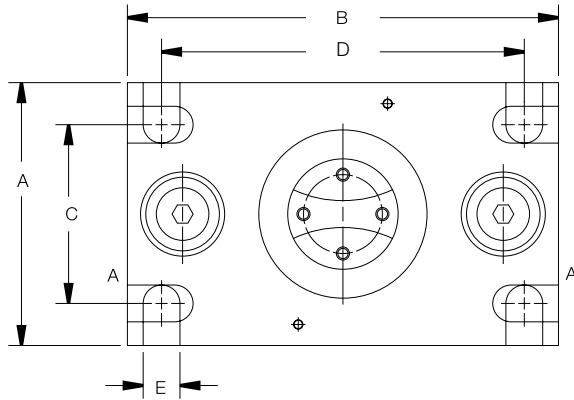
- Capacities (per module): 5,000-30,000 kg (11,023.1-66,139.0 lb)
- Matched output load cells eliminate trimming
- 304 stainless steel construction
- Hermetically-sealed, IP68 stainless steel load cells
- Easy load cell replacement
- Integral jacking/shipping bolts

[www.ricelake.com/loadcells](http://www.ricelake.com/loadcells)

USA: 800-472-6703 • CANADA/MEXICO: 800-321-6703 • INTERNATIONAL: 715-234-9171

# 220 Universal Mount Specifications

Complete Kit!  
Compare  
& Save!



RATED CAPACITY	DIMENSIONS						
	A	B	C	D	E	H	I
<b>kg/mm</b>							
5,000-10,000	127	203	90	170	18	107	118
20,000/30,000	152	245	115	208	24	148	156
<b>lb/inches</b>							
11,023.1	5.00	8.00	3.54	6.70	.71	4.21	4.65
44,092.7/66,139.0	5.98	9.65	4.53	8.19	.94	5.83	6.14

## SPECIFICATIONS:

<b>Full Scale Output:</b>	2.0 mV/V	<b>Seal Type:</b>	Hermetically-sealed, IP68
<b>Bridge Resistance:</b>	1000 ohms, nominal	<b>Cable Length:</b>	5 m (5,000 kg), 10 m (10,000-20,000 kg) 20 m (30,000 kg)
<b>Material/Finish:</b>	Stainless Steel	<b>Cable Color Code:</b>	Blue ..... + Excitation Black..... - Excitation Green..... + Sense Grey..... - Sense White ..... + Signal Red..... - Signal
<b>Temperature:</b>	Operating temperature range 14°F to 104°F/-10°C to 40°C	<b>Warranty:</b>	1-year limited warranty
<b>Safe Overload:</b>	150% at center loading point, full scale		
<b>Rated Excitation:</b>	10V DC (15V maximum)		
<b>Total Error:</b>	0.020% Full scale		
<b>Insulation Resistance:</b>	2000 megohms		

## 220 UNIVERSAL MOUNT ORDER INFORMATION

Load Rating (Load Cell Capacity)	Part #	Price
<b>3-Module Kit (Includes Load Cell)</b>		
5000 kg (11,023.1 lb) .....	66208.....	\$4,395.00
10,000 kg (22,046.3 lb) .....	66209.....	\$4,395.00
20,000 kg (44,092.7 lb) .....	66210.....	\$5,595.00
30,000 kg (66,139.0 lb) .....	66211.....	\$5,595.00
<b>4-Module Kit (Includes Load Cell)</b>		
5000 kg (11,023.1 lb) .....	66212.....	\$5,785.00
10,000 kg (22,046.3 lb) .....	66213.....	\$5,785.00
20,000 kg (44,092.7 lb) .....	66214.....	\$7,385.00
30,000 kg (66,139.0 lb) .....	66215.....	\$7,385.00

www.ricelake.com

USA: 800-472-6703 • CANADA/MEXICO: 800-321-6703 • INTERNATIONAL: 715-234-9171

© 2008 Rice Lake Weighing Systems • November 15, 2008 • Prices and specifications subject to change without notice. Visit ricelake.com for current prices.