

Weigh Modules • Tank and Hopper Kits

Color Literature
Available by Request

RL50210 TA 1000-2500 lb Capacity Mini Tank Weighing Module, Rice Lake Weighing Systems/Vishay Sensortronics

Weigh Modules



Available in configurations with three or four mounting assemblies.

Picture is a representation of actual product

The RL50210 TA Weigh Module Kit provides a cost-effective alternative for your customers' medium-range weighing needs. A variety of features makes this kit easy to install and an exceptional choice for various indoor weighing applications where checking requirements are low. Environmentally protected load cells, neoprene isolation/compression mounts and other Rice Lake Weighing Systems components are the keys to this module's performance.

Load Cell Certifications:



Module with RL35023 single-ended shear beam load cell; capacities (per module): NTEP-certified 1000 lb (453.6 kg) load cell shown. Refer to page 110 for load cell specifications.



APPLICATIONS:

- Small tanks and hoppers
- Conveyor/In-motion weighing
- Small platform scales where minor shock loading may be a problem

Complete Kit Includes:

- 1 JB4SS NEMA 4X stainless steel signal trim junction box
- 3 or 4 RL35023 shear beam load cells (see page 110)
- 3 or 4 neoprene isolation/compression mounts
- 25' of our Hostile Environment EL147HE SURVIVOR® load cell cable

STANDARD FEATURES:

- NTEP-certified load cells (alloy steel only), 1:5000d, Class III Multiple Cell
- Zinc plated, mild steel assemblies
- Medium weighing ranges from 1000-2500 lb (453.6-1134.0 kg) per module
- Environmentally protected load cells
- Neoprene isolation/compression mounts allow for minor misalignment, thermal expansion and shock absorption
- Overload stop provides durability
- RL50210 stainless steel mounts use RL35023S stainless steel load cells, capacities: 1000-2500 lb (453.6-1134.0 kg) NTEP cells
- 65059 stainless steel mounts use Vishay Sensortronics 65023S NTEP stainless steel load cells

OPTIONAL FEATURES:

- Welded stainless steel cells available in stainless steel mounts

www.ricelake.com

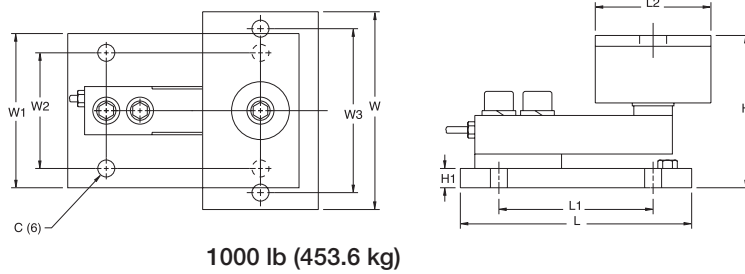
USA: 800-472-6703 • CANADA/MEXICO: 800-321-6703 • INTERNATIONAL: 715-234-9171

© 2006 Rice Lake Weighing Systems • October 1, 2006 • Prices and specifications subject to change without notice. Visit ricelake.com for current prices.

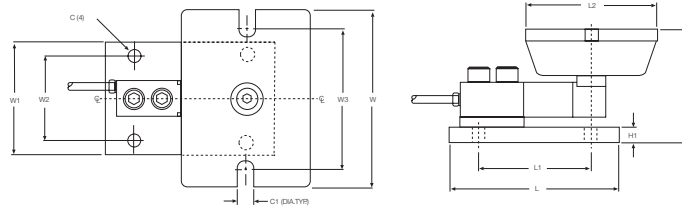
RL50210 TA Specifications

**Complete Kit!
Compare
& Save!**

1000-2500 lb (453.6-1134.0 kg) Capacities



1000 lb (453.6 kg)



2000 lb-2500 lb (907.2 kg-1134.0 kg)

RATED CAPACITY	DIMENSIONS											
	C	C1	H	H1	L	L1	L2	W	W1	W2	W3	
lb/inches												
1000	.44	—	4.00	.50	6.00	4.00	3.00	5.13	4.00	3.00	4.13	
2000-2500	.44	.56	4.00	.50	6.00	4.00	4.62	6.25	4.00	3.00	5.00	
kg/mm												
453.6	11.2	—	101.6	12.7	152.4	101.6	76.2	130.3	101.6	76.2	104.9	
907.2-1134.0	11.2	14.2	101.6	12.7	152.4	101.6	117.3	158.8	101.6	76.2	127.0	

RL50210 TA ORDER INFORMATION

*Load Rating (Load Cell Capacity)	Part #	Price
Mild Steel Single Module (Includes Load Cell)		
1000 lb (453.6 kg)	17849	\$525.00
2000 lb (907.2 kg)	17948	\$525.00
2500 lb (1134.0 kg)	17949	\$525.00
Mild Steel 3-Module Kit		
1000 lb (453.6 kg)	18056	\$1,775.00
2000 lb (907.2 kg)	30398	\$1,775.00
2500 lb (1134.0 kg)	30396	\$1,775.00
Mild Steel 4-Module Kit		
1000 lb (453.6 kg)	18062	\$2,275.00
2000 lb (907.2 kg)	30397	\$2,275.00
2500 lb (1134.0 kg)	30395	\$2,275.00
Stainless Steel Single Module (Includes Load Cell)		
1000 lb (453.6 kg)	17955	\$610.00
2000 lb (907.2 kg)	17956	\$610.00
2500 lb (1134.0 kg)	17957	\$610.00
Stainless Steel 3-Module Kit		
1000 lb (453.6 kg)	30404	\$2,020.00
2000 lb (907.2 kg)	30402	\$2,020.00
2500 lb (1134.0 kg)	30400	\$2,020.00
Stainless Steel 4-Module Kit		
1000 lb (453.6 kg)	30403	\$2,650.00
2000 lb (907.2 kg)	30401	\$2,650.00
2500 lb (1134.0 kg)	30399	\$2,650.00

65059 VISHAY SENSORTRONICS ORDER INFORMATION

*Load Rating (Load Cell Capacity)	Part #	Price
Mild Steel Single Module (Includes Load Cell)		
1000 lb (453.6 kg)	17830	\$525.00
2000 lb (907.2 kg)	17946	\$525.00
2500 lb (1134.0 kg)	17947	\$525.00
Mild Steel 3-Module Kit		
1000 lb (453.6 kg)	18068	\$1,775.00
2000 lb (907.2 kg)	30413	\$1,775.00
2500 lb (1134.0 kg)	30412	\$1,775.00
Mild Steel 4-Module Kit		
1000 lb (453.6 kg)	18074	\$2,275.00
2000 lb (907.2 kg)	30414	\$2,275.00
2500 lb (1134.0 kg)	30411	\$2,275.00
Stainless Steel Single Module (Includes Load Cell)		
1000 lb (453.6 kg)	17951	\$610.00
2000 lb (907.2 kg)	17952	\$610.00
2500 lb (1134.0 kg)	17953	\$610.00
Stainless Steel 3-Module Kit		
1000 lb (453.6 kg)	30410	\$2,020.00
2000 lb (907.2 kg)	30408	\$2,020.00
2500 lb (1134.0 kg)	30406	\$2,020.00
Stainless Steel 4-Module Kit		
1000 lb (453.6 kg)	30409	\$2,650.00
2000 lb (907.2 kg)	30407	\$2,650.00
2500 lb (1134.0 kg)	30405	\$2,650.00

* Load Rating is per module

www.ricelake.com

USA: 800-472-6703 • CANADA/MEXICO: 800-321-6703 • INTERNATIONAL: 715-234-9171

© 2006 Rice Lake Weighing Systems • November 1, 2006 • Prices and specifications subject to change without notice. Visit ricelake.com for current prices.