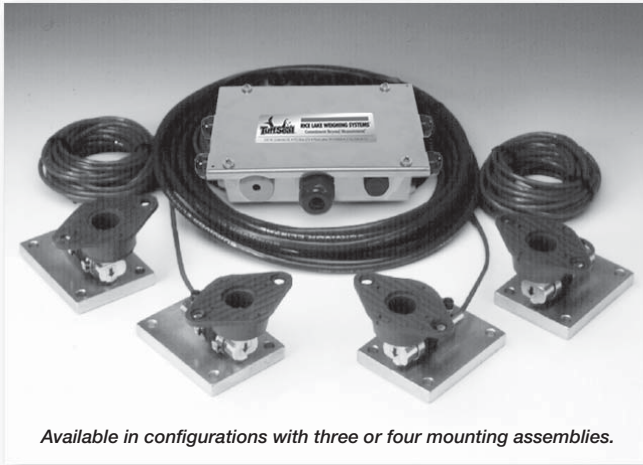


Weigh Modules • Tank and Hopper Kits



RL50210 TA 50-500 lb Capacity Mini Tank Weighing Module, Rice Lake Weighing Systems/Vishay Sontorionics

Weigh Modules



Available in configurations with three or four mounting assemblies.

Picture is a representation of actual product.

The RL50210 TA Weigh Module Kit provides a cost-effective alternative for your customers' low-range weighing needs. A variety of features makes this kit easy to install and an exceptional choice for various indoor weighing applications where checking requirements are low. Environmentally protected load cells, neoprene isolation/compression mounts and other Rice Lake Weighing Systems components are the keys to this module's outstanding performance.

Load Cell Certification:



RL30000 only



Module with RL50210 or RL50210SS cantilever beam load cell; capacities (per module): 50 lb (22.7 kg), 100 lb (45.4 kg), 150 lb (68.0 kg) and 250 lb (113.4 kg). Refer to page 127 for load cell specifications. 500 lb model features RL30000 single-ended beam load cell; refer to page 108 for load cell specifications.



Complete Kit Includes:

- 1 JB4SS NEMA 4X stainless steel signal trim junction box
- 3 or 4 RL50210 cantilever beam load cells (50-250 lb models) (see page 127)
- 3 or 4 RL30000 single-ended beam load cells (500 lb models)
- 3 or 4 neoprene isolation/compression mounts
- 25' of our Hostile Environment EL147HE SURVIVOR® load cell cable

APPLICATIONS:

- Small tanks and hoppers
- Conveyor/In-motion weighing
- Small platform scales where minor shock loading may be a problem

STANDARD FEATURES:

- Zinc plated, mild steel modules
- Lower weighing ranges from 50-500 lb (22.7-226.8 kg) per module
- Environmentally protected load cells
- Neoprene isolation/compression mounts allow for minor misalignment, thermal expansion and shock absorption
- Overload stop for 500 lb (226.8 kg) modules provides durability

OPTIONAL FEATURES:

- Stainless steel modules available in 50, 100, 150, 250 and 500 lb (22.7, 45.4, 68.0, 113.4, 226.8 kg) capacity with RL60040SST and RL39123 stainless steel load cells or Vishay Sontorionics 65023 SS load cells
- 65059 kits available with Vishay Sontorionics 60040 load cells, capacities: 50-250 lb (22.7-113.4 kg) or 65023 load cells, capacity: 500 lb (226.8 kg)

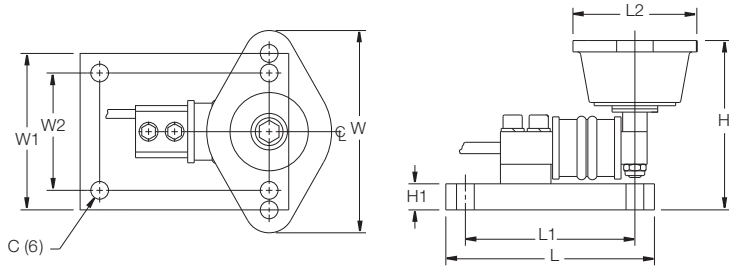
www.ricelake.com/loadcells

USA: 800-472-6703 • CANADA/MEXICO: 800-321-6703 • INTERNATIONAL: 715-234-9171

RL50210 TA Specifications

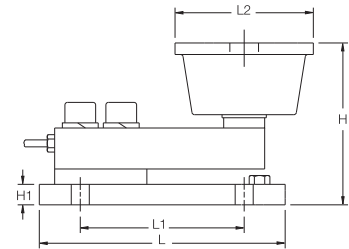
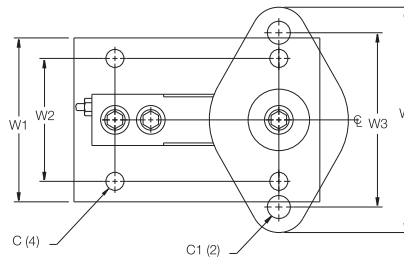
**Complete Kit!
Compare
& Save!**

50-500 lb (22.7-226.8 kg) Capacities



**Stainless Steel
Upgrade Now
Available!**

50-250 lb (22.7-113.4 kg)



500 lb (226.8 kg)

RATED CAPACITY	DIMENSIONS											
	C	C1	H	H1	L	L1	L2	W	W1	W2	W3	
lb/inches												
50-250	.34	—	3.13	.50	4.00	3.25	2.38	3.88	3.00	2.25	—	
500	.44	.56	3.88	.50	6.00	4.00	3.38	5.50	4.00	3.00	4.13	
kg/mm												
22.7-113.4	8.6	—	79.5	12.7	101.6	82.6	60.5	98.6	76.2	57.2	—	
226.8	11.2	14.2	98.6	12.7	152.4	101.6	85.9	139.7	101.6	76.2	104.9	

Weigh Modules

RL50210 TA RLWS ORDER INFORMATION

*Load Rating (Load Cell Capacity)	Part #	Price
Mild Steel Single Module (Includes Load Cell)		
50 lb (22.7 kg)	17844	\$395.00
100 lb (45.4 kg)	17845	\$395.00
150 lb (68.0 kg)	17846	\$395.00
250 lb (113.4 kg)	17847	\$395.00
500 lb (226.8 kg)	17848	\$525.00
Mild Steel 3-Module Kit		
50 lb (22.7 kg)	18051	\$1,370.00
100 lb (45.4 kg)	18052	\$1,370.00
150 lb (68.0 kg)	18053	\$1,370.00
250 lb (113.4 kg)	18054	\$1,370.00
500 lb (226.8 kg)	18055	\$1,775.00
Mild Steel 4-Module Kit		
50 lb (22.7 kg)	18057	\$1,760.00
100 lb (45.4 kg)	18058	\$1,760.00
150 lb (68.0 kg)	18059	\$1,760.00
250 lb (113.4 kg)	18060	\$1,760.00
500 lb (226.8 kg)	18061	\$2,250.00
Stainless Steel Single Module (Includes Load Cell)		
50 lb (22.7 kg)	63033	\$625.00
100 lb (45.4 kg)	63034	\$625.00
150 lb (68.0 kg)	63035	\$625.00
250 lb (113.4 kg)	63036	\$625.00
500 lb (226.8 kg)	17954	\$610.00
Stainless Steel 3-Module Kit		
500 lb (226.8 kg)	30394	\$2,020.00
Stainless Steel 4-Module Kit		
500 lb (226.8 kg)	30393	\$2,650.00

65059 VISHAY SENSORTRONICS ORDER INFORMATION

*Load Rating (Load Cell Capacity)	Part #	Price
Mild Steel Single Module (Includes Load Cell)		
50 lb (22.7 kg)	17825	\$395.00
100 lb (45.4 kg)	17826	\$395.00
150 lb (68.0 kg)	17827	\$395.00
250 lb (113.4 kg)	17828	\$395.00
500 lb (226.8 kg)	17829	\$525.00
Mild Steel 3-Module Kit		
50 lb (22.7 kg)	18063	\$1,370.00
100 lb (45.4 kg)	18064	\$1,370.00
150 lb (68.0 kg)	18065	\$1,370.00
250 lb (113.4 kg)	18066	\$1,370.00
500 lb (226.8 kg)	18067	\$1,775.00
Mild Steel 4-Module Kit		
50 lb (22.7 kg)	18069	\$1,760.00
100 lb (45.4 kg)	18070	\$1,760.00
150 lb (68.0 kg)	18071	\$1,760.00
250 lb (113.4 kg)	18072	\$1,760.00
500 lb (226.8 kg)	18073	\$2,250.00
Stainless Steel Single Module (Includes Load Cell)		
500 lb (226.8 kg)	17950	\$610.00
Stainless Steel 3-Module Kit		
500 lb (226.8 kg)	30392	\$2,020.00
Stainless Steel 4-Module Kit		
500 lb (226.8 kg)	30391	\$2,650.00

* Load Rating is per module

www.ricelake.com/loadcells

USA: 800-472-6703 • CANADA/MEXICO: 800-321-6703 • INTERNATIONAL: 715-234-9171