

Weigh Modules • Tank and Hopper Kits

65092 TWA Heavy-Capacity Tank Weighing Assembly, Vishay Sensortronics



Available in configurations with three or four mounting assemblies.

Picture is a representation of actual product

The 65092 Tank Weighing Assembly is designed for use with tanks, bins and large-capacity storage silos. Features include low-profile design for easy installation and self-checking capability with freedom of movement to accommodate for thermal expansion. Also features off-center loading/side load capabilities of up to 30% of full scale capacity. Mounting hardware is hardened alloy steel with zinc plating. The load cell is alloy steel with nickel plating. The 65092 load cell is supplied with 25 feet of load cell cable.



Assembly with integral 65094 compression canister load cell. See next page for load cell specifications.



Complete Kit Includes:

- 1 JB4SS NEMA 4X stainless steel signal trim junction box
- 3 or 4 65092 zinc-plated mild steel mounting assemblies
- 3 or 4 65094 nickel plated high-alloy steel compression load cells
- 25' of our Hostile Environment EL147HE SURVIVOR® load cell cable

APPLICATIONS:

- Tank, bin and silo weighing
- Bulk inventory management

STANDARD FEATURES:

- Capacities: 50,000-500,000 lb (22,679.7-226,796.9 kg)
- Mounts directly to foundation or structural support
- Free-floating top mounting plate provides side checking with provisions for thermal expansion
- No check rods required
- Lift-off protected
- Low profile/low deflection
- Symmetrical mounting bolt pattern simplifies installation
- Integral conduit adaptor
- Accommodates Vishay Sensortronics 65094 load cell

OPTIONAL FEATURES:

- Stainless steel versions available
- High-temperature versions available
- Custom mounting bolt patterns are available

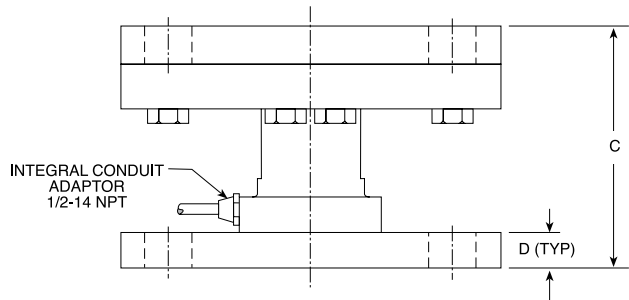
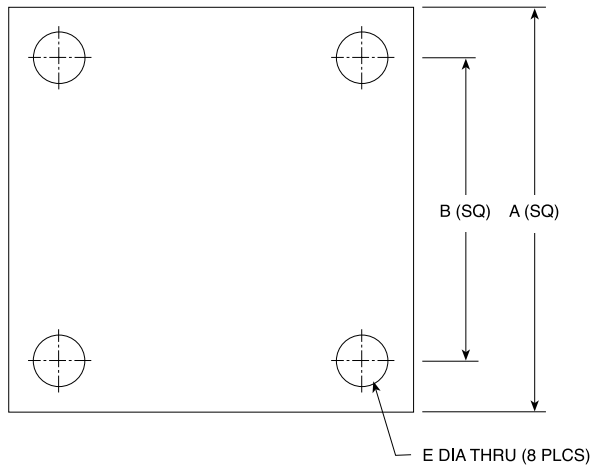
www.ricelake.com/loadcells

USA: 800-472-6703 • CANADA/MEXICO: 800-321-6703 • INTERNATIONAL: 715-234-9171

© 2008 Rice Lake Weighing Systems • November 15, 2008 • Prices and specifications subject to change without notice. Visit ricelake.com/loadcells for current prices.

65092 TWA Specifications

**Complete Kit!
Compare
& Save!**



RATED CAPACITY	DIMENSIONS				
	A	B	C	D	E
lb/inches					
50,000	8.00	6.00	5.13	0.94	0.78
100,000	10.00	7.50	7.38	1.19	1.12
200,000	12.00	8.50	9.50	1.44	1.63
300,000	14.00	9.50	11.00	1.94	1.63
500,000	17.00	12.00	12.63	2.44	2.13
kg/mm					
22,679.6	203.2	152.4	130.3	23.9	19.8
45,359.4	254.0	190.5	187.5	30.2	28.4
90,718.7	304.8	215.9	241.3	36.6	41.4
136,078.1	355.6	241.3	279.4	49.3	41.4
226,796.9	431.8	304.8	320.8	62.0	54.1

LOAD CELL SPECIFICATIONS:

Full Scale Output:	2.0 mV/V	Insulation Resistance:	5000 megohms
Bridge Resistance:	350 ohms	Seal Type:	Environmentally-sealed
Material/Finish:	High-alloy steel, nickel plated	Cable Length:	25'/7.6 m
Safe Overload:	200% Full Scale Compression, 100% Full Scale Tension	Cable Color Code:	Red..... + Excitation Black..... - Excitation Green..... + Signal White..... - Signal
Rated Excitation:	10 VDC (25 V maximum)	Warranty:	1-year limited warranty
Nonlinearity:	0.1% Full Scale		
Combined Error:	0.1% Full Scale		
Temperature:	Compensated range: 14°F to 104°F/10°C to 40°C		

65092 TWA ORDER INFORMATION

Load Rating (Per Module)	Part #	Price
Single Module (Includes Load Cell)		
50,000 lb (22,679.6 kg)	29866	\$2,195.00
100,000 lb (45,359.4 kg)	29867	\$4,995.00
200,000 lb (90,718.7 kg)	29868	\$5,395.00
300,000 lb (136,078.1 kg)	N/A	Consult Factory
500,000 lb (226,796.9 kg)	N/A	Consult Factory
3-Module Kit		
50,000 lb (22,679.6 kg)	29857	\$6,795.00
100,000 lb (45,359.4 kg)	29858	\$15,100.00
200,000 lb (90,718.7 kg)	29859	\$16,395.00
300,000 lb (136,078.1 kg)	N/A	Consult Factory
500,000 lb (226,796.9 kg)	N/A	Consult Factory

65092 TWA ORDER INFORMATION

Load Rating (Per Module)	Part #	Price
4-Module Kit		
50,000 lb (22,679.6 kg)	29852	\$8,495.00
100,000 lb (45,359.4 kg)	29853	\$20,095.00
200,000 lb (90,718.7 kg)	29854	\$21,790.00
300,000 lb (136,078.1 kg)	N/A	Consult Factory
500,000 lb (226,796.9 kg)	N/A	Consult Factory

65094 TWA REPLACEMENT LOAD CELL ORDER INFORMATION

Load Rating (Per Module)	Part #	Price
50,000 lb (22,679.6 kg)	29862	\$1,395.00
100,000 lb (45,359.4 kg)	29863	\$2,295.00
200,000 lb (90,718.7 kg)	29864	\$2,495.00
300,000 lb (136,078.1 kg)	N/A	Consult factory
500,000 lb (226,796.9 kg)	N/A	Consult factory

www.ricelake.com/loadcells

USA: 800-472-6703 • CANADA/MEXICO: 800-321-6703 • INTERNATIONAL: 715-234-9171

© 2008 Rice Lake Weighing Systems • November 15, 2008 • Prices and specifications subject to change without notice. Visit ricelake.com/loadcells for current prices.