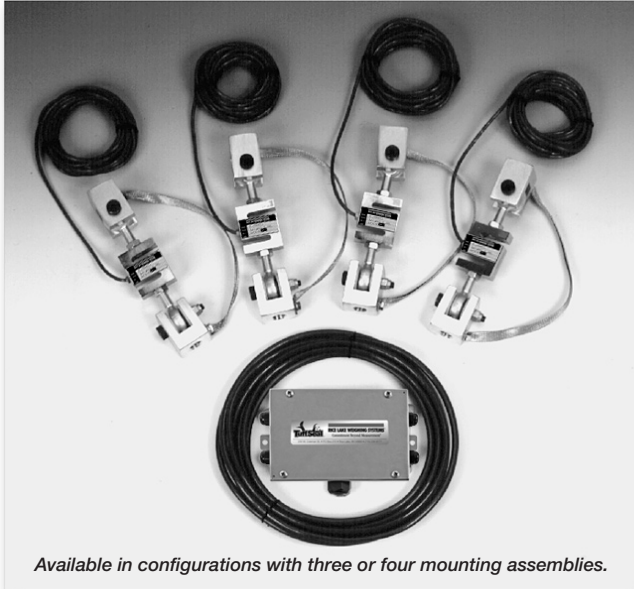


Weigh Modules • Tank and Hopper Kits

ITCM SS Stainless Steel Isolated Tension Cell Modules



Available in configurations with three or four mounting assemblies.

Picture is a representation of actual product

Complete Kit Includes:

- 3 or 4 ITCM assemblies with RL20000 ST NTEP-certified S-Beam load cells (see page 106)
- 1 JB4SS NEMA 4X stainless steel signal trim junction box
- 25' of our Hostile Environment EL147HE SURVIVOR® load cell cable

Weigh Modules

The ITCM Series utilizes several Rice Lake Weighing Systems components to provide an unmatched level of performance in tank and hopper weighing applications and mechanical scale conversions. The ITCM SS incorporates clevis and unique rod end ball joint assemblies to reduce the overall length to less than half of the traditional tension cell mounts, while providing correct load alignment. In addition, the load cell is completely electrically isolated from stray currents, which are a major cause of load cell failure. To complete the design, a grounding strap connects the two clevis assemblies to further provide safety to your load cells.

Load Cell Certifications:



Module with
RL20000 ST S-Beam
load cell. Refer to
page 106 for load
cell specifications.



APPLICATIONS:

- Suspended hoppers and tanks
- Mechanical scale conversions
- Use as a single module or in multiples

STANDARD FEATURES:

- Capacities (per module): 100-5,000 lb (45.4-2268.0 kg)
- Clevis mounts with nylon insulating washers
- Teflon®-lined rod end ball joints
- Load cell is completely isolated from stray currents
- Grounding strap provides alternative path to ground
- Complete package for ease of installation
- Provides correct load cell loading even in difficult installations
- Lower overall height compared to other isolated tension assemblies

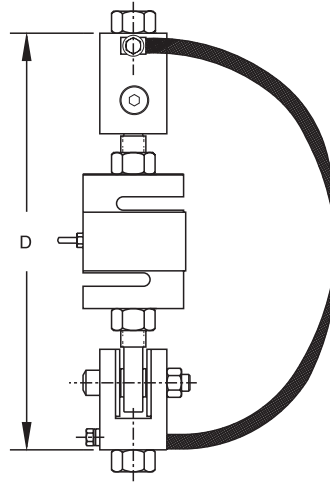
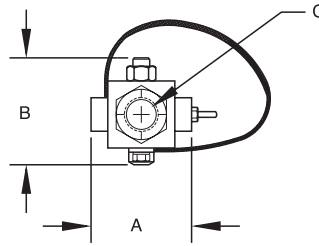
Important: Read "Load Cell Mounting Hardware Safety Guidelines" on page 365

www.ricelake.com/loadcells

USA: 800-472-6703 • CANADA/MEXICO: 800-321-6703 • INTERNATIONAL: 715-234-9171

ITCM SS Specifications

**Complete Kit!
Compare
& Save!**



Weigh Modules

ITCM SS ORDER INFORMATION

*LOAD RATING (LOAD CELL CAPACITY)	DIMENSIONS - INCHES (MM)				Single Module		3-Module Kit		4-Module Kit	
	A	B	C	D	Part #	Price	Part #	Price	Part #	Price
100 lb (45.4 kg)	2.00 (50.8)	1.81 (46.0)	3/8-16 NC	7.00 (ref) (177.8)	46765.....	\$725.00	46735.....	\$2,385.00	46751.....	\$3,015.00
100 lb (45.4 kg)	2.00 (50.8)	1.81 (46.0)	1/2-13 NC	7.00 (ref) (177.8)	46766.....	\$725.00	46736.....	\$2,385.00	46752.....	\$3,015.00
250 lb (113.4 kg)	2.00 (50.8)	1.81 (46.0)	3/8-16 NC	7.00 (ref) (177.8)	46767.....	\$725.00	46737.....	\$2,385.00	46753.....	\$3,015.00
250 lb (113.4 kg)	2.00 (50.8)	1.81 (46.0)	1/2-13 NC	7.00 (ref) (177.8)	46768.....	\$725.00	46738.....	\$2,385.00	46754.....	\$3,015.00
500 lb (226.8 kg)	2.68 (68.1)	2.68 (68.1)	1/2-13 NC	9.50 (ref) (241.3)	46769.....	\$725.00	46739.....	\$2,385.00	46755.....	\$3,015.00
500 lb (226.8 kg)	2.68 (68.1)	2.68 (68.1)	5/8-11 NC	9.50 (ref) (241.3)	46770.....	\$725.00	46740.....	\$2,385.00	46756.....	\$3,015.00
750 lb (340.2 kg)	2.68 (68.1)	2.68 (68.1)	1/2-13 NC	9.50 (ref) (241.3)	46771.....	\$725.00	46741.....	\$2,385.00	46757.....	\$3,015.00
750 lb (340.2 kg)	2.68 (68.1)	2.68 (68.1)	5/8-11 NC	9.50 (ref) (241.3)	46772.....	\$725.00	46742.....	\$2,385.00	46758.....	\$3,015.00
1000 lb (453.6 kg)	2.68 (68.1)	2.68 (68.1)	1/2-13 NC	9.50 (ref) (241.3)	46773.....	\$725.00	46743.....	\$2,385.00	46759.....	\$3,015.00
1000 lb (453.6 kg)	2.68 (68.1)	2.68 (68.1)	5/8-11 NC	9.50 (ref) (241.3)	46774.....	\$725.00	46744.....	\$2,385.00	46760.....	\$3,015.00
2500 lb (1134.0 kg)	2.68 (68.1)	2.68 (68.1)	5/8-11 NC	9.50 (ref) (241.3)	46775.....	\$725.00	46745.....	\$2,385.00	46761.....	\$3,015.00
2500 lb (1134.0 kg)	2.68 (68.1)	2.68 (68.1)	3/4-10 NC	9.50 (ref) (241.3)	46776.....	\$725.00	46746.....	\$2,385.00	46762.....	\$3,015.00
3000 lb (1360.8 kg)	3.37 (85.6)	3.37 (85.6)	3/4-10 NC	10.75 (ref) (273.0)	46777.....	\$775.00	46747.....	\$2,535.00	46763.....	\$3,215.00
5000 lb (2268.0 kg)	3.37 (85.6)	3.37 (85.6)	3/4-10 NC	12.00 (ref) (304.8)	46778.....	\$1,225.00	46748.....	\$3,885.00	46764.....	\$5,115.00

* Load Rating is per module

www.ricelake.com/loadcells

USA: 800-472-6703 • CANADA/MEXICO: 800-321-6703 • INTERNATIONAL: 715-234-9171

© 2008 Rice Lake Weighing Systems • November 15, 2008 • Prices and specifications subject to change without notice. Visit ricelake.com/loadcells for current prices.