

MagnaMount® Tank, Truck & Railroad Track Assembly, Rice Lake Weighing Systems



Mount only;
does not include load cell

Picture is a representation of actual product

The MagnaMount tank, truck and railroad scale assembly is designed for use with Rice Lake Weighing Systems' RLCSP1 or Revere Transducer's CP or CSP load cells. The "Shielded Cell" load cell mounting assembly is a highly reliable design that shields the load cell from shock and side load effects, assuring accurate weighing even under adverse loading conditions.

APPLICATIONS:

- Truck scale mount*
- Heavy-capacity horizontal tanks*
- Railroad track mount*

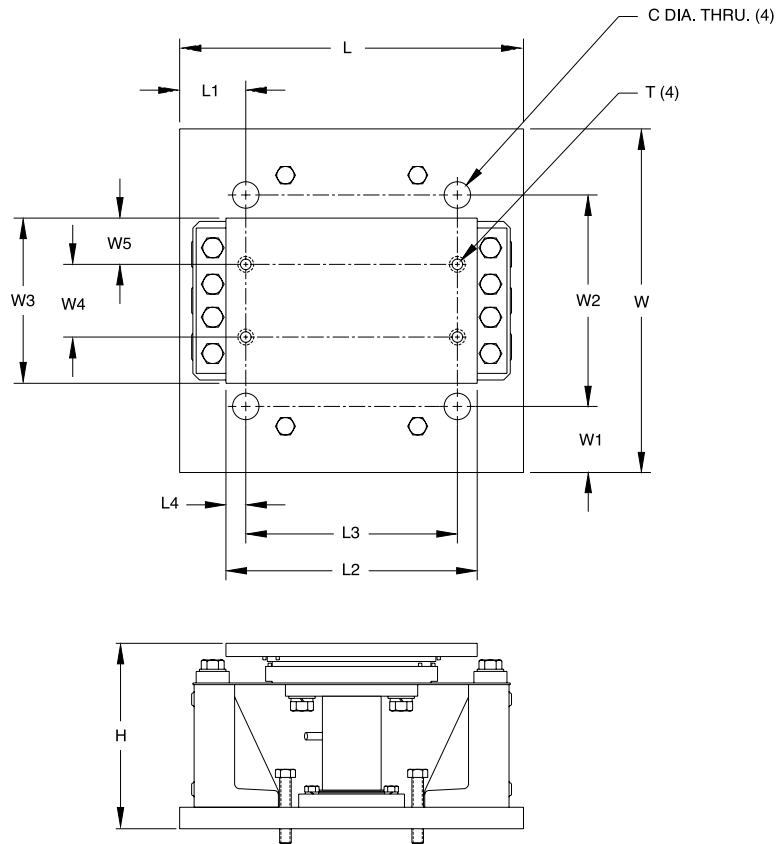
STANDARD FEATURES:

- Capacities: 50,000, 100,000 and 200,000 lb (22,679.6, 45,359.4 and 90,718.7 kg)
- Protects load cell from shock and side loads
- Low-profile design
- High-strength load bearing plate made of high-grade carbon steel hardened to Rockwell C 48-54
- Teflon®-coated shock absorbers
- Compatible with Revere Transducer's CP and CSP and Rice Lake Weighing Systems' RLCSP1 NTEP-certified load cells

* Check rods required



MagnaMount® Specifications



Weigh Modules

RATED CAPACITY	DIMENSIONS													
	C	H	L	L1	L2	L3	L4	T	W	W1	W2	W3	W4	W5
lb/inches														
50,000	1.25	7.39	13.00	1.75	11.25	8.50	1.37	3/4-10 UNC	12.00	1.75	8.50	8.00	4.50	1.75
100,000	1.50	11.29	20.00	2.50	18.00	15.50	1.25	7/8-9 UNC	17.00	2.50	12.00	9.00	5.50	1.75
200,000	2.00	14.10	26.00	5.00	19.00	16.00	1.50	1-8 UNC	26.00	5.00	16.00	12.50	5.50	3.50
kg/mm														
22,679.6	31.8	187.7	330.2	44.5	285.8	241.3	34.8	3/4-10 UNC	304.8	44.5	215.9	203.2	114.3	44.5
45,359.4	38.1	286.8	508.0	63.5	457.2	393.7	31.8	7/8-9 UNC	431.8	63.5	304.8	228.6	139.7	44.5
90,718.7	50.8	358.1	660.4	127.0	482.6	406.4	38.1	1-8 UNC	660.4	127.0	406.4	317.5	139.7	88.9

MAGNAMOUNT ORDER INFORMATION

Load Rating	Part #	Price
50,000 lb (22,679.6 kg)	21723	\$1,195.00
100,000 lb (45,359.4 kg)	21724	\$1,495.00
200,000 lb (90,718.7 kg)	17974	\$2,295.00

* Mount only; does not include load cell

See page 280 for Revere Transducer's load cell model CP, and page 281 for NTEP-certified load cell model CSP specifications

See page 146 for Rice Lake Weighing Systems' NTEP-certified load cell model RLCSP1

www.ricelake.com/loadcells

USA: 800-472-6703 • CANADA/MEXICO: 800-321-6703 • INTERNATIONAL: 715-234-9171