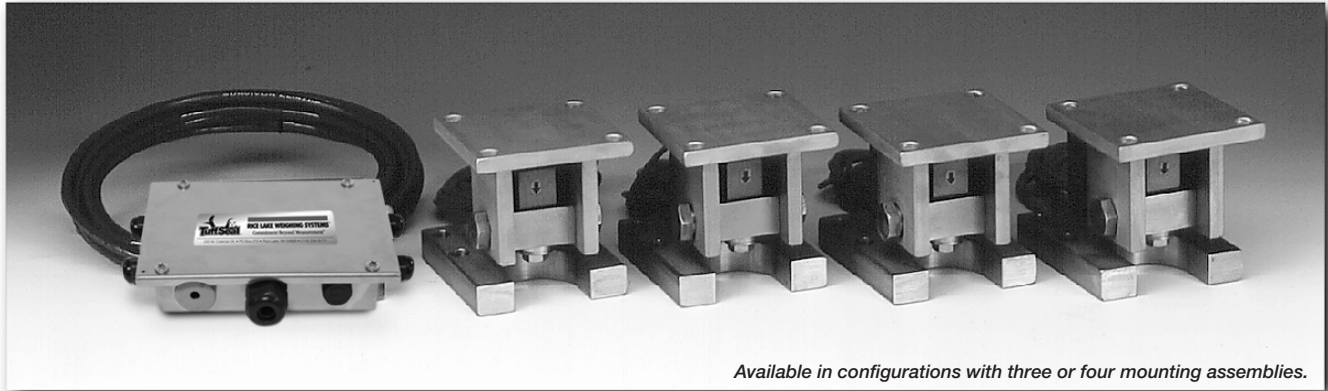


Weigh Modules • Tank and Hopper Kits

RL1800 Series Mild Steel/Stainless Steel Weigh Modules



Available in configurations with three or four mounting assemblies.

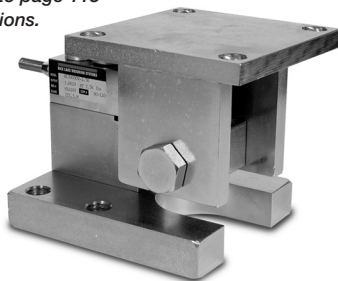
Picture is a representation of actual product

The RL1800 Series Mounting Assembly Kit utilizes several Rice Lake Weighing Systems components to provide an unmatched level of performance in tank and hopper weighing applications. The RL1800 Series kit is ideally suited for indoor and outdoor process control operations with medium-range capacities. Each module combines multi-directional movement and self-checking capabilities. The RL35023 and RL35023S load cells used are NTEP certified in capacities of 1000 lb to 10,000 lb.

Load Cell Certifications:



Module with RL35023 single-ended beam load cell. Refer to page 115 for load cell specifications.



Complete Kit Includes:

- 1 JB4SS NEMA 4X stainless steel signal trim junction box
- 3 or 4 RL1800 mild or stainless steel compression mounts
- 3 or 4 RL35023 single-ended beam load cells, RL35023S used in stainless kits (see pages 115 & 116)
- 25' of our Hostile Environment EL147HE SURVIVOR® load cell cable

APPLICATIONS:

- Conveyors
- Medium-capacity tanks and hoppers

STANDARD FEATURES:

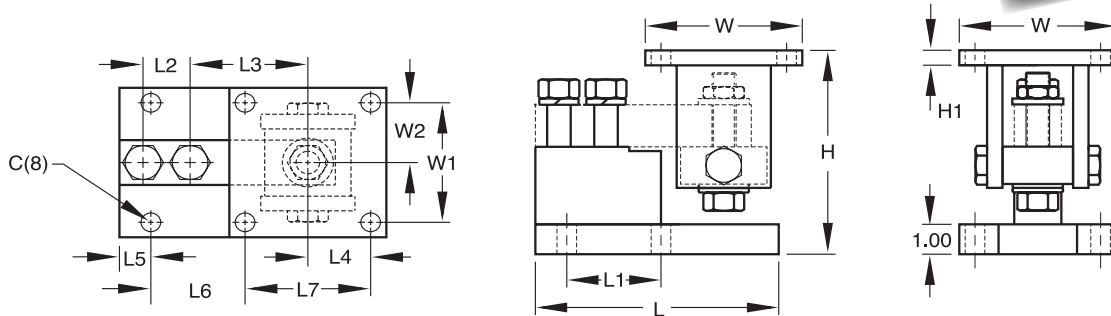
- Capacities (per module): 250-10,000 lb (113.4-4535.9 kg)
- NTEP-certified cells in 1000-10,000 lb (453.6-4535.9 kg) capacities (except 3000 lb [1360.9 kg])
- Zinc plated mild steel/stainless steel construction
- Center-pivoted, tension loading design
- Self-checking, multi-directional movement
- Load is suspended on high-strength bolt instead of wire rope
- Design incorporates spherical washers for self centering
- Stainless steel kit includes RL35023S NTEP-certified load cell

www.ricelake.com/loadcells

USA: 800-472-6703 • CANADA/MEXICO: 800-321-6703 • INTERNATIONAL: 715-234-9171

RL1800 Series Specifications

**Complete Kit!
Compare
& Save!**



RATED CAPACITY	DIMENSIONS													
	C	H Min/Max	H1	L	L1	L2	L3	L4	L5	L6	L7	W	W1	W2
Mild Steel Construction														
lb/inches														
250-5000 SE	.62	5.25/5.56	.50	6.00	2.00	1.00	3.00	2.00	.68	1.94	4.00	5.00	4.00	2.00
5000 LE-10,000	.62	6.12/6.62	.50	7.75	3.00	1.50	3.75	2.00	1.03	2.97	4.00	5.00	4.00	2.00
kg/mm														
113.4-2268.0	15.8	133.4/141.2	12.7	152.4	50.8	25.4	76.2	50.8	17.3	49.3	101.6	127.0	101.6	50.8
2268.0-4535.9	15.8	155.4/168.1	12.7	196.9	76.2	38.1	95.3	50.8	26.2	75.4	101.6	127.0	101.6	50.8
Stainless Steel Construction														
lb/inches														
1000-4000	.62	5.25/5.56	.50	6.00	2.00	1.00	3.00	2.00	.68	1.94	4.00	5.00	4.00	2.00
5000-10,000	.62	6.12/6.62	.50	7.75	3.00	1.50	3.75	2.00	1.03	2.97	4.00	5.00	4.00	2.00
kg/mm														
453.6-1814.4	15.8	133.4/141.2	12.7	152.4	50.8	25.4	76.2	50.8	17.3	49.3	101.6	127.0	101.6	50.8
2268.0-4535.9	15.8	155.4/168.1	12.7	196.9	76.2	38.1	95.3	50.8	26.2	75.4	101.6	127.0	101.6	50.8

RL1800 MILD STEEL ORDER INFORMATION

*Load Rating (Load Cell Capacity)	Part #	Price
Single Module (Does NOT Include Load Cell)		
250-5000 lb SE		
(113.4-2268.0 kg)	17817	\$325.00
5000 LE-10,000 lb		
(2268.0-4535.9 kg)	17819	\$350.00
3-Module Kit		
**250 lb (113.4 kg)	18075	\$1,995.00
**500 lb (226.8 kg)	18076	\$1,995.00
1000 lb (453.6 kg)	18077	\$1,995.00
2000 lb (907.2 kg)	18078	\$1,995.00
2500 lb (1134.0 kg)	18079	\$1,995.00
3000 lb (1360.8 kg)	18080	\$1,995.00
4000 lb (1814.4 kg)	18081	\$1,995.00
5000 lb SE (2268.0 kg)	18082	\$1,995.00
5000 lb LE (2268.0 kg)	18083	\$2,295.00
10,000 lb (4535.9 kg)	18084	\$2,295.00
4-Module Kit		
**250 lb (113.4 kg)	18085	\$2,595.00
**500 lb (226.8 kg)	18086	\$2,595.00
1000 lb (453.6 kg)	18087	\$2,595.00
2000 lb (907.2 kg)	18088	\$2,595.00
2500 lb (1134.0 kg)	18089	\$2,595.00
3000 lb (1360.8 kg)	18090	\$2,595.00
4000 lb (1814.4 kg)	18091	\$2,595.00
5000 lb SE (2268.0 kg)	18092	\$2,595.00
5000 lb LE (2268.0 kg)	18093	\$3,195.00
10,000 lb (4535.9 kg)	18094	\$3,195.00

SE refers to small envelope
LE refers to large envelope

RL1800 STAINLESS STEEL ORDER INFORMATION

*Load Rating (Load Cell Capacity)	Part #	Price
Single Module (Does NOT Include Load Cell)		
250-4000 lb		
(113.4-1814.4 kg)	17818	\$525.00
5000-10,000 lb		
(2268.0-4535.9 kg)	17820	\$550.00
3-Module Kit		
1000 lb (453.6 kg)	18095	\$2,695.00
2000 lb (907.2 kg)	18096	\$2,695.00
2500 lb (1134.0 kg)	18097	\$2,695.00
4000 lb (1814.4 kg)	18099	\$2,695.00
LE 5000 lb (2268.0 kg)	18100	\$2,925.00
10,000 lb (4535.9 kg)	18101	\$2,925.00
4-Module Kit		
1000 lb (453.6 kg)	18102	\$3,595.00
2000 lb (907.2 kg)	18103	\$3,595.00
2500 lb (1134.0 kg)	18104	\$3,595.00
4000 lb (1814.4 kg)	18106	\$3,595.00
LE 5000 lb (2268.0 kg)	18107	\$3,910.00
10,000 lb (4535.9 kg)	18108	\$3,910.00

* Load Rating is per module
** Use RL30000 load cells

www.ricelake.com/loadcells

USA: 800-472-6703 • CANADA/MEXICO: 800-321-6703 • INTERNATIONAL: 715-234-9171

© 2008 Rice Lake Weighing Systems • November 15, 2008 • Prices and specifications subject to change without notice. Visit ricelake.com/loadcells for current prices.