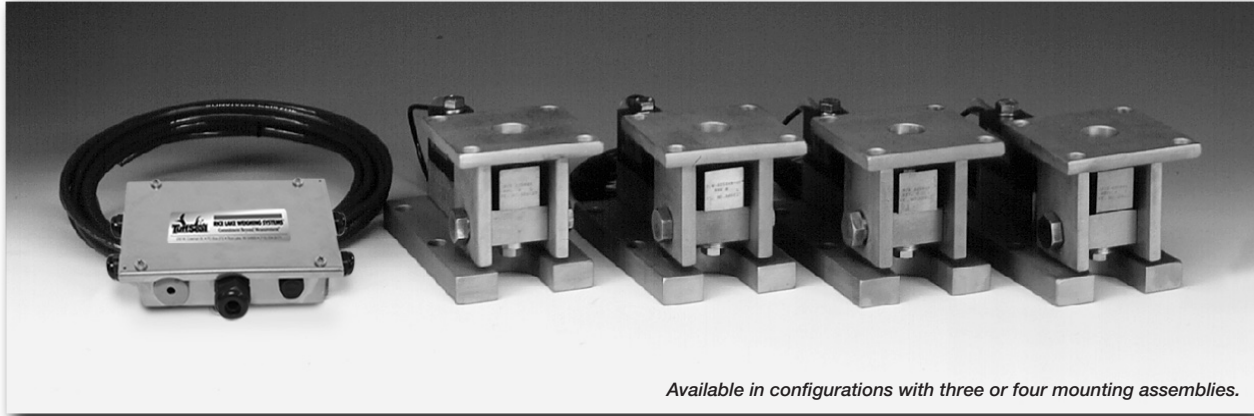


Weigh Modules • Tank and Hopper Kits

Color Literature
Available by Request

RL1900 Series Stainless Steel Weigh Modules



Available in configurations with three or four mounting assemblies.

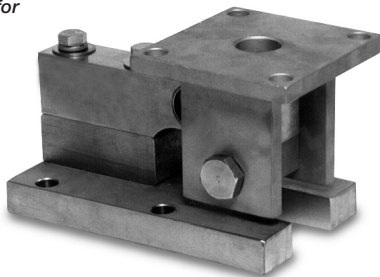
Picture is a representation of actual product

The RL1900 Series Weigh Module Kit utilizes several Rice Lake Weighing Systems components to provide an unmatched level of performance in tank and hopper weighing applications. The RL1900 kit is ideally suited for tank, hopper and bin weighing operations with medium-range capacities. Each module combines multi-directional movement and self-checking capabilities. The welded seal stainless steel RLSSB load cell withstands washdown and corrosive environments that may present problems to other cells.

Load Cell Certifications:



Module with welded-seal
RLSSB single-ended beam load
cell. Refer to page 123 for
load cell specifications.



Complete Kit Includes:

- 1 JB4SS NEMA 4X stainless steel signal trim junction box
- 3 or 4 RL1900 stainless steel compression mounts
- 3 or 4 RLSSB welded stainless steel single-ended beam load cells (see page 123)
- 25' of our Hostile Environment EL147HE SURVIVOR® load cell cable

APPLICATIONS:

- Medium-capacity tanks, bins and hoppers
- Washdown or corrosive applications

STANDARD FEATURES:

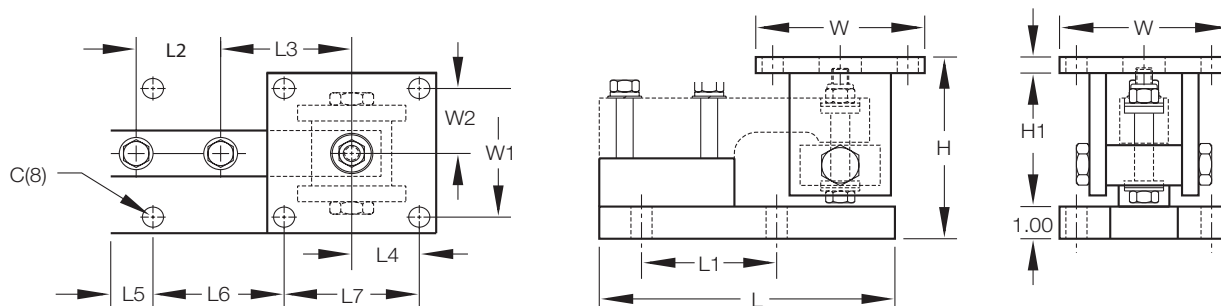
- NTEP-certified load cells, 1:5000d, Class III Single Cell
- Capacities (per module): 1000-10,000 lb (453.6-4535.9 kg)
- 304 stainless steel construction
- Center-pivoted, tension loading design
- Welded-seal stainless steel load cells
- Self-checking, multi-directional movement
- Easy load cell replacement
- Load is suspended on high-strength bolt instead of wire rope
- Design incorporates spherical washers

OPTIONAL FEATURES:

- Also compatible with HBM SB3 load cells
- Also compatible with RTI SSB load cells

RL1900 Series Specifications

**Complete Kit!
Compare
& Save!**



RATED CAPACITY	C	H Min/Max	H1	DIMENSIONS											
				L	L1	L2	L3	L4	L5	L6	L7	W	W1	W2	
lb/inches															
1000-5000	.62	5.38/5.62	.50	8.75	4.00	2.50	3.88	2.00	1.12	4.00	4.00	4.00	5.00	4.00	2.00
10,000	.81	6.88/7.50	1.00	9.75	5.00	2.63	4.88	2.25	1.00	5.00	4.50	6.00	4.50	2.25	
kg/mm															
453.6-2268.0	15.8	136.7/142.9	12.7	222.3	101.6	63.5	98.6	50.8	28.4	101.6	101.6	127.0	101.6	50.8	
4535.9	20.6	174.8/190.5	25.4	247.7	127.0	66.8	124.0	57.2	25.4	127.0	114.3	152.4	114.3	57.2	

RL1900 ORDER INFORMATION

*Load Rating (Load Cell Capacity)	Part #	Price
Single Module (Does NOT Include Load Cell)		
1000-5000 lb (453.6-2268.0 kg).....	17841.....	\$550.00
10,000 lb (4535.9 kg).....	17843.....	\$595.00
3-Module Kit		
1000 lb (453.6 kg).....	18109.....	\$3,595.00
2000 lb (907.2 kg).....	18110.....	\$3,595.00
5000 lb (2268.0 kg).....	18111.....	\$3,595.00
10,000 lb (4535.9 kg).....	18112.....	\$3,995.00
4-Module Kit		
1000 lb (453.6 kg).....	18113.....	\$4,795.00
2000 lb (907.2 kg).....	18114.....	\$4,795.00
5000 lb (2268.0 kg).....	18115.....	\$4,795.00
10,000 lb (4535.9 kg).....	18116.....	\$5,295.00

* Load Rating is per module