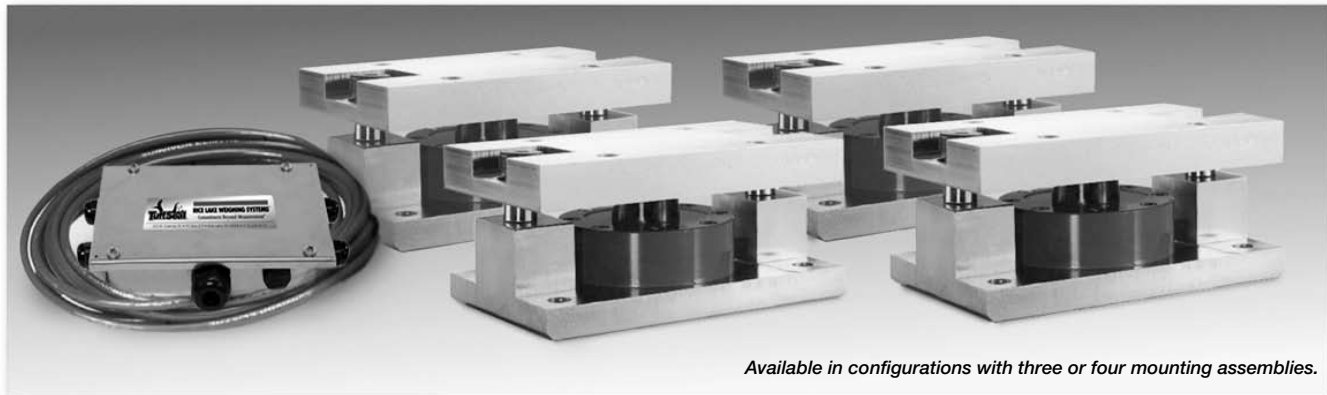


Weigh Modules • Tank and Hopper Kits

RL2200 Series

Tank, Hopper & Vessel Weighing Assembly, Rice Lake Weighing Systems



Available in configurations with three or four mounting assemblies.

Picture is a representation of actual product

Weigh Modules

The RL2200 Series mounts are ideal for use in tank, hopper, vessel, and many other applications. The low-profile design allows for economical solutions in a competitive marketplace. This rugged, high-precision mount is designed for easy installation and does not require check rods or other stabilizing hardware. The RL2200 mount has the added feature of self centering, allowing for side loads without sacrificing performance.



Assembly with integral RL2200 compression disk load cell. See next page for load cell specifications.



Complete Kit Includes:

- 1 JB4SS NEMA 4X stainless steel signal trim junction box
- 3 or 4 RL2200 high-alloy, zinc-plated steel mounting assemblies
- 3 or 4 RL2200 compression disk load cells
- 25' of our Hostile Environment EL147HE SURVIVOR® load cell cable

APPLICATIONS:

- Tank, hopper or vessel weighing
- Belt or roller conveyors
- Scale platforms and screw feeders

STANDARD FEATURES:

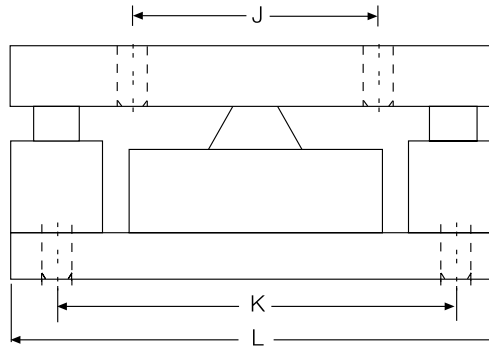
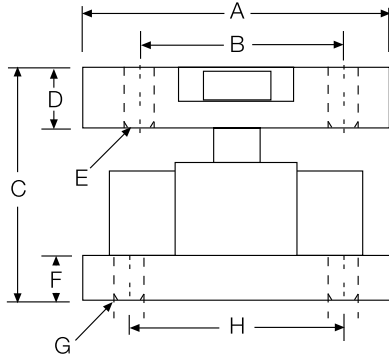
- Capacities: 2500-50,000 lb (1134-22,680 kg)
- Low-profile design
- High 4 mV/V output (2 mV/V, 2500 lb)
- Self-centering in all directions—able to withstand excessive side loads
- Self-checking assembly

www.ricelake.com/loadcells

USA: 800-472-6703 • CANADA/MEXICO: 800-321-6703 • INTERNATIONAL: 715-234-9171

RL2200 Series Specifications

**Complete Kit!
Compare
& Save!**



**Expanded
Capacity
Range!**

RATED CAPACITY

lb/inches
2500-10,000
25,000-50,000

kg/mm
1134-4536
11,340-22,679.6

DIMENSIONS

	A	B	C	D	E	F	G	H	J	K	L
lb/inches	5.0	3.50	4.00	1.00	.52	1.0	.52	3.50	4.00	6.50	8.0
25,000-50,000	6.0	4.50	5.00	1.25	.78	1.0	.78	4.50	5.00	7.75	10.0
kg/mm	127.0	88.9	101.6	25.4	13.2	19.0	13.2	88.9	101.6	165.1	203.2
11,340-22,679.6	152.4	114.3	127.0	31.7	19.8	25.4	19.8	114.3	127.0	196.8	254.0

LOAD CELL SPECIFICATIONS:

Full Scale Output: 4.0 mV/V, 2.0 mV/V (2500 lb)
Bridge Resistance: 350 ohms nominal
Material/Finish: High-alloy steel, painted
Safe Overload: 150% Full Scale
Rated Excitation: 10 VDC (20 V maximum)
Nonlinearity: 0.05% Full Scale
Hysteresis: 0.03% Full Scale
Temperature: Compensated range:
15°F to 115°F/-9°C to 46°C

Insulation Resistance: 5000 megohms
Seal Type: Environmentally-sealed
***Cable Length:** 30'/9.1 m
Cable Color Code: Red..... + Excitation
Black..... - Excitation
White..... + Signal
Green..... - Signal
Warranty: 2-year limited warranty

*Compression load application

RL2200 SERIES ORDER INFORMATION

Load Rating	Part #	Price
Single Module		
2500 lb (1134 kg)	76656	\$1,495.00
5000 lb (2268 kg)	45849	\$1,495.00
10,000 lb (4536 kg)	45848	\$1,495.00
25,000 lb (11,340 kg)	45847	\$1,995.00
50,000 lb (22,680 kg)	45846	\$1,995.00
3-Module Kit		
2500 lb (1134 kg)	76897	\$4,595.00
5000 lb (2268 kg)	42811	\$4,595.00
10,000 lb (4536 kg)	42812	\$4,595.00
25,000 lb (11,340 kg)	42813	\$5,995.00
50,000 lb (22,680 kg)	42814	\$5,995.00
4-Module Kit		
2500 lb (1134 kg)	76898	\$5,995.00
5000 lb (2268 kg)	42815	\$5,995.00
10,000 lb (4536 kg)	42816	\$5,995.00
25,000 lb (11,340 kg)	42817	\$6,995.00
50,000 lb (22,680 kg)	42818	\$6,995.00

RL2200 SERIES REPLACEMENT LOAD CELL ORDER INFORMATION

Load Rating	Part #	Price
2500 lb (1134 kg)	76654	\$1,195.00
5000 lb (2268 kg)	45708	\$1,195.00
10,000 lb (4536 kg)	45709	\$1,195.00
25,000 lb (11,340 kg)	45710	\$1,495.00
50,000 lb (22,680 kg)	45711	\$1,495.00

www.ricelake.com

USA: 800-472-6703 • CANADA/MEXICO: 800-321-6703 • INTERNATIONAL: 715-234-9171

© 2008 Rice Lake Weighing Systems • November 15, 2008 • Prices and specifications subject to change without notice. Visit ricelake.com for current prices.

Weigh Modules