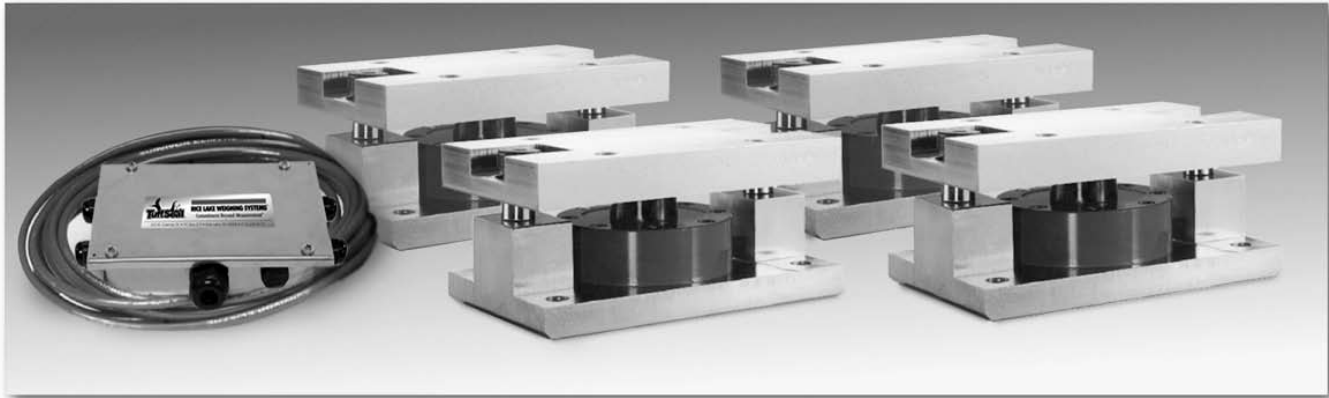


# Weigh Modules • Tank and Hopper Kits

## RL2200 SS Series

### Stainless Steel, Tank, Hopper & Vessel Weighing Assembly, Rice Lake Weighing Systems



Weigh Modules

The RL2200 SS Series mounts are ideal for use in tank, hopper, vessel and many other applications. The low-profile design allows for economical solutions in a competitive marketplace. This rugged, high-precision mount is designed for easy installation and does not require check rods or other stabilizing hardware. The RL2200SS mount has the added feature of self centering, allowing for side loads without sacrificing performance.



Assembly with integral RL2200 SS compression disk load cell. See next page for load cell specifications.



### Complete Kit Includes:

- 1 JB4SS NEMA 4X stainless steel signal trim junction box
- 3 or 4 RL2200 stainless steel mounting assemblies
- 3 or 4 RL2200 SS stainless steel, hermetically sealed, compression disk load cells
- 25' of our Hostile Environment EL147HE SURVIVOR® load cell cable

### APPLICATIONS:

- Tank, hopper or vessel weighing
- Belt or roller conveyors
- Scale platforms and screw feeders

### STANDARD FEATURES:

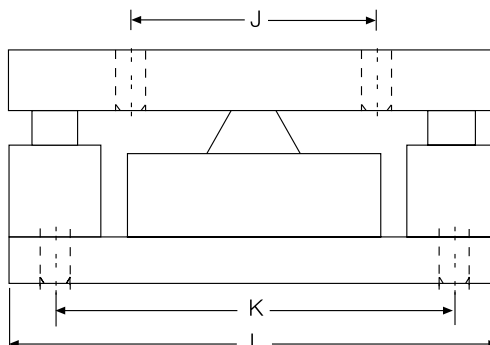
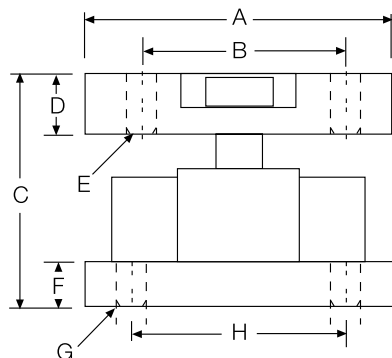
- Capacities: 2500-50,000 lb (1134-22,680 kg)
- Low-profile design
- High 4 mV/V output (2 mV/V, 2500 lb)
- Self-centering in all directions—able to withstand excessive side loads
- Self-checking assembly

[www.ricelake.com/loadcells](http://www.ricelake.com/loadcells)

USA: 800-472-6703 • CANADA/MEXICO: 800-321-6703 • INTERNATIONAL: 715-234-9171

# RL2200 SS Series Specifications

**Complete Kit!  
Compare  
& Save!**



**Low Profile  
Design!**

## RATED CAPACITY

**lb/inches**  
2500-10,000  
25,000-50,000

DIMENSIONS											
A	B	C	D	E	F	G	H	J	K	L	
5.00	3.50	4.00	1.00	.52	1.00	.52	3.50	4.00	6.50	8.00	
6.00	4.50	5.00	1.25	.78	1.00	.78	4.50	5.00	7.75	10.00	

**kg/mm**  
1134-4536  
11,340-22,679.6

127.0	88.9	101.6	25.4	13.2	19.0	13.2	88.9	101.6	165.1	203.2
152.4	114.3	127.0	31.7	19.8	25.4	19.8	114.3	127.0	196.8	254.0

## LOAD CELL SPECIFICATIONS:

**Full Scale Output:** 4.0 mV/V, 2.0 mV/V (2500 lb)  
**Bridge Resistance:** 350 ohms nominal  
**Material/Finish:** Stainless steel  
**Safe Overload:** 150% Full Scale  
**Rated Excitation:** 10 VDC (20 V maximum)  
**Nonlinearity:** 0.05% Full Scale  
**Hysteresis:** 0.03% Full Scale  
**Temperature:** Compensated range:  
15°F to 115°F/-9°C to 46°C

**Insulation Resistance:** 5000 megohms  
**Seal Type:** Hermetically sealed, IP66/68  
**\*Cable Length:** 30'/9.1 m  
**Cable Color Code:** Red ..... + Excitation  
 Black..... - Excitation  
 White ..... + Signal  
 Green..... - Signal  
**Warranty:** 2-year limited warranty

\* Compression load application

## RL2200 SS SERIES ORDER INFORMATION

Load Rating	Part #	Price
<b>Single Module</b>		
2500 lb (1134 kg)	76657	\$2,195.00
5000 lb (2268 kg)	45845	\$2,195.00
10,000 lb (4536 kg)	45844	\$2,195.00
25,000 lb (11,340 kg)	45843	\$3,095.00
50,000 lb (22,680 kg)	45842	\$3,095.00
<b>3-Module Kit</b>		
2500 lb (1134 kg)	76899	\$6,195.00
5000 lb (2268 kg)	46478	\$6,195.00
10,000 lb (4536 kg)	46479	\$6,195.00
25,000 lb (11,340 kg)	46480	\$8,995.00
50,000 lb (22,680 kg)	46481	\$8,995.00
<b>4-Module Kit</b>		
2500 lb (1134 kg)	76900	\$8,195.00
5000 lb (2268 kg)	46482	\$8,195.00
10,000 lb (4536 kg)	46483	\$8,195.00
25,000 lb (11,340 kg)	46484	\$11,695.00
50,000 lb (22,680 kg)	46485	\$11,695.00

## RL2200 SS SERIES REPLACEMENT LOAD CELL ORDER INFORMATION

Load Rating	Part #	Price
2500 lb (1134 kg)	76655	\$1,360.00
5000 lb (2268 kg)	45712	\$1,360.00
10,000 lb (4536 kg)	45713	\$1,360.00
25,000 lb (11,340 kg)	45714	\$1,525.00
50,000 lb (22,680 kg)	45715	\$1,525.00

www.ricelake.com

USA: 800-472-6703 • CANADA/MEXICO: 800-321-6703 • INTERNATIONAL: 715-234-9171

© 2008 Rice Lake Weighing Systems • November 15, 2008 • Prices and specifications subject to change without notice. Visit ricelake.com for current prices.

Weigh Modules