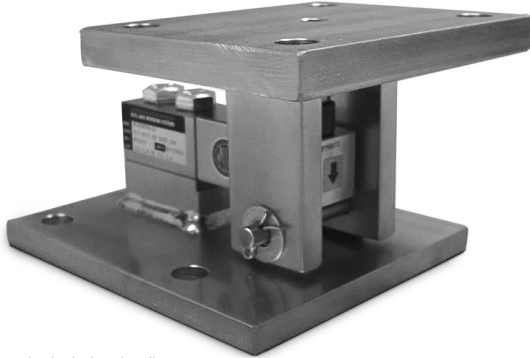


# Weigh Modules • Tank and Hopper Kits

## RLBTM Mild Steel/Stainless Steel Weigh Modules



Does not include load cell.

Picture is a representation of actual product

The RLBTM mount was specifically created to take advantage of the improved load introduction accuracy of the ball and cup design. This multi-purpose mount is ideal for both indoor and outdoor applications, and can be used with a variety of single-ended beam load cells. Available in both mild and stainless steel material, this product offers superior accuracy at an affordable price. These assemblies are also quick and easy to install, making the RLBTM the perfect choice for your low-capacity, multi-purpose weighing needs.

### APPLICATIONS:

- Light- to medium-capacity tanks and hoppers
- Conveyors

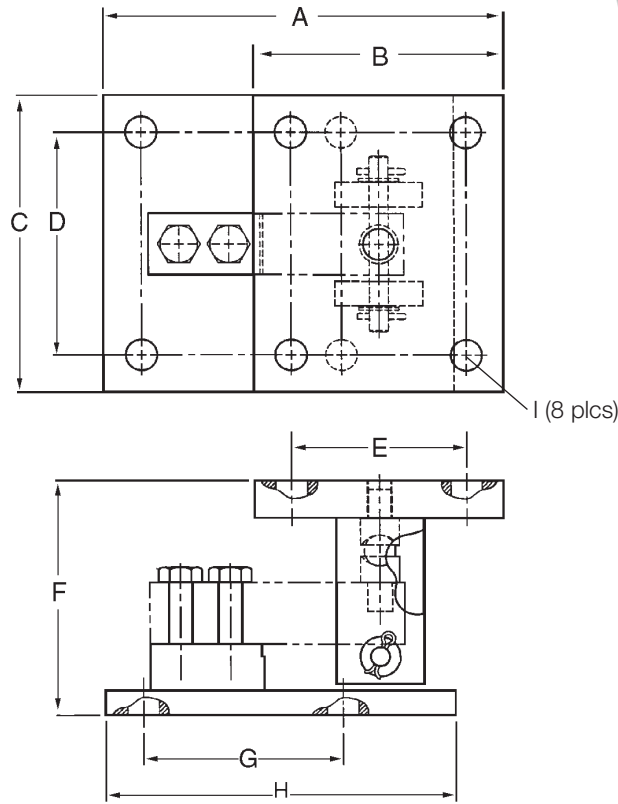
### STANDARD FEATURES:

- Capacities (per module): 500-5,000 lb SE mild steel/1,000-4,000 lb stainless steel
- Zinc plated mild steel construction or stainless steel
- Ball and cup load introduction
- Self-checking, multi-directional movement
- Design incorporates a ball and cup for self centering
- The RLBTM will accommodate a standard shear beam 500 lb-5,000 lb SE load cell that has a threaded load hole. RL30000 (see page 110), RL39123 (see page 112), RL35023 (see page 115), RL35082 (see page 118), RL35083 (see page 117).



# RLBTM Specifications

**Complete Kit!  
Compare  
& Save!**



**Weigh Modules**

RATED CAPACITY	DIMENSIONS								
	A	B	C	D	E	F	G	H	I
lb/inches 250-5000 SE	8.00	5.00	6.00	4.50	3.50	4.75	4.00	7.00	.63
kg/mm 113.4/2268.0	203.2	127	152.4	114.3	88.9	120.6	101.6	177.8	16.0

### RLBTM MILD STEEL ORDER INFORMATION

*Load Rating (Load Cell Capacity)	Part #	Price
--------------------------------------	--------	-------

**Single Module (Does NOT Include Load Cell)**  
500 lb -5,000 lb SE (113.4-2268.0 kg) .. 53059 .....\$315.00

*SE refers to small envelope*  
\* Load Rating is per module

### RLBTM STAINLESS STEEL ORDER INFORMATION

*Load Rating (Load Cell Capacity)	Part #	Price
--------------------------------------	--------	-------

**Single Module (Does NOT Include Load Cell)**  
1,000-4,000 lb (453.6-1814.4 kg)... 53066 .....\$495.00