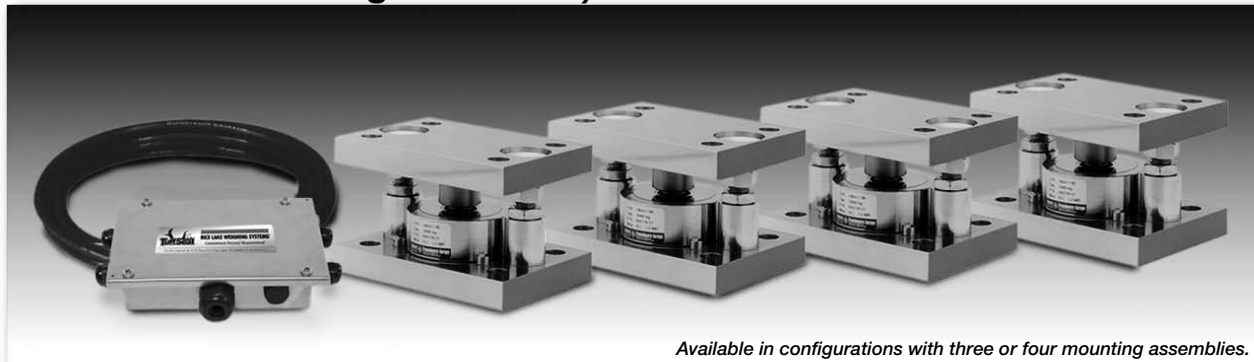


# Weigh Modules • Tank and Hopper Kits

## RLC Stainless Steel Weigh Modules, Revere Transducers



Available in configurations with three or four mounting assemblies.

Picture is a representation of actual product

The RLC self-aligning silo mount, together with the RLC load cell family, are an ideal solution for process control, batch weighing, silo/hopper and belt scale applications.

The RLC mount incorporates a removable “rocker pin” design, that uses hardened stainless steel components on all load-bearing surfaces. The fully stainless steel construction guarantees long-term reliability, even in the harshest environments.

### Complete Kit Includes:

- 1 JB4SS NEMA 4X stainless steel signal trim junction box
- 3 or 4 RLC stainless steel compression mounts (see page 279)
- 3 or 4 RLC stainless steel hermetically-sealed compression disk load cells
- 25' of our Hostile Environment EL147HE SURVIVOR® load cell cable

Load Cell Certifications:



Module with hermetically-sealed RLC compression canister load cell. Refer to page 279 for load cell specifications.



### APPLICATIONS:

- Medium-capacity tanks, bins and hoppers
- Washdown or corrosive applications
- Process control and batch weighing

### STANDARD FEATURES:

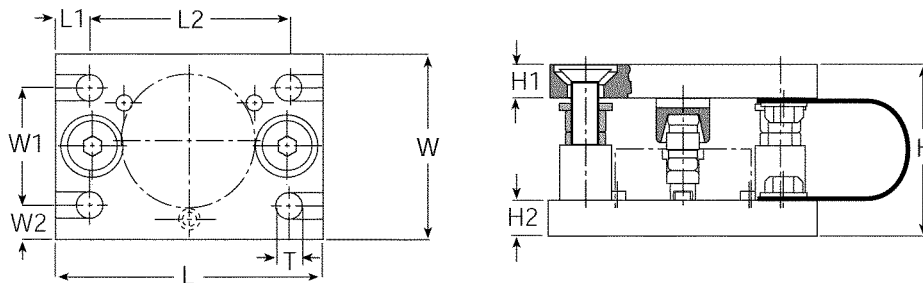
- Capacities (per module): 500-5000 kg (1102.3-11,023.1 lb)
- Matched output load cells eliminate trimming
- 304 stainless steel construction
- Rocker pin design allows movement in all directions
- Hermetically-sealed, IP66/68 stainless steel load cells
- Easy load cell replacement
- Integral jacking/shipping bolts

[www.ricelake.com/loadcells](http://www.ricelake.com/loadcells)

USA: 800-472-6703 • CANADA/MEXICO: 800-321-6703 • INTERNATIONAL: 715-234-9171

# RLC Specifications

**Complete Kit!  
Compare  
& Save!**



RATED CAPACITY	DIMENSIONS										
	H	H1	H2	L	L1	L2	T	W	W1	W2	
<b>kg/mm</b>											
500-1000	80	20	15	150	15	120	14 (Top plate)	100	70	15	
2000-5000	105	20	20	160	20	120	13.8 (Bottom plate)	110	70	20	
<b>lb/inches</b>											
1102.3-2204.6	3.15	.79	.59	5.91	.59	4.72	.55 (Top plate)	3.94	2.76	.59	
4409.2-11,023.1	4.13	.79	.79	6.30	.79	4.72	.54 (Bottom plate)	4.33	2.76	.79	

## RLC ORDER INFORMATION

*Load Rating (Load Cell Capacity)	Part #	Price
<b>Single Module (Includes Load Cell)</b>		
500 kg (1102.3 lb) .....	36401 .....	\$985.00
1000 kg (2204.6 lb) .....	36402 .....	\$985.00
2000 kg (4409.2 lb) .....	36403 .....	\$985.00
3500 kg (7717.5 lb) .....	36404 .....	\$1,065.00
5000 kg (11,023.1 lb) .....	36405 .....	\$1,065.00
<b>3-Module Kit</b>		
500 kg (1102.3 lb) .....	36406 .....	\$3,205.00
1000 kg (2204.6 lb) .....	36407 .....	\$3,205.00
2000 kg (4409.2 lb) .....	36408 .....	\$3,205.00
3500 kg (7717.5 lb) .....	36409 .....	\$3,445.00
5000 kg (11,023.1 lb) .....	36410 .....	\$3,445.00
<b>4-Module Kit</b>		
500 kg (1102.3 lb) .....	36411 .....	\$4,190.00
1000 kg (2204.6 lb) .....	36412 .....	\$4,190.00
2000 kg (4409.2 lb) .....	36413 .....	\$4,190.00
3500 kg (7717.5 lb) .....	36414 .....	\$4,495.00
5000 kg (11,023.1 lb) .....	36415 .....	\$4,495.00

\* Load Rating is per module

www.ricelake.com

USA: 800-472-6703 • CANADA/MEXICO: 800-321-6703 • INTERNATIONAL: 715-234-9171

© 2008 Rice Lake Weighing Systems • November 15, 2008 • Prices and specifications subject to change without notice. Visit ricelake.com for current prices.

Weigh Modules