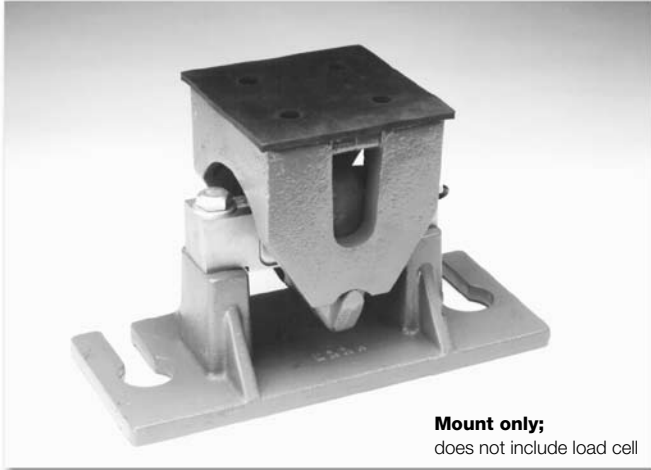


Weigh Modules • Tank and Hopper Kits

TSA Truck Scale Assembly, Vishay Sensortronics



Mount only;
does not include load cell

Picture is a representation of actual product

The TSA truck scale assembly is designed for use with Rice Lake Weighing Systems RL75058 or Vishay Sensortronics 65058. The “Unilink” suspension design checks lateral movement of the assembly, while controlled floating of the scale deck is allowed. The effective integration of the TSA mount and the double-ended shear beam load cell eliminates the need for troublesome check rods, links, expansion assemblies and other peripheral hardware.



APPLICATIONS:

- Truck, track, horizontal tank or general purpose
- From light-duty livestock to heavy-duty vehicle scales

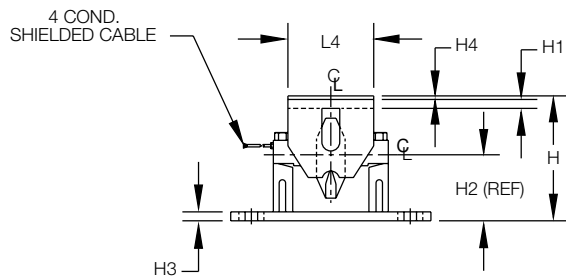
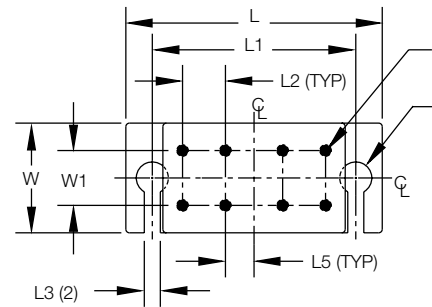
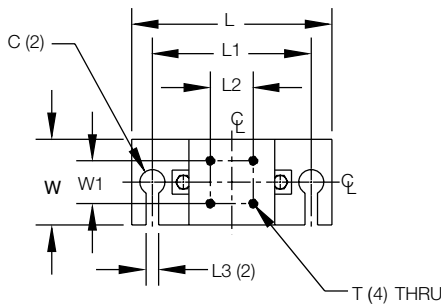
STANDARD FEATURES:

- Capacities: 10,000-75,000 lb (4535.9-34,019.4 kg)
- Constructed of cast steel and iron with primer coating
- Unique high-performance “Unilink” suspension system
- Center-loaded double-ended shear beam design
- Self-checking design
- Rubber pad provided for mounting

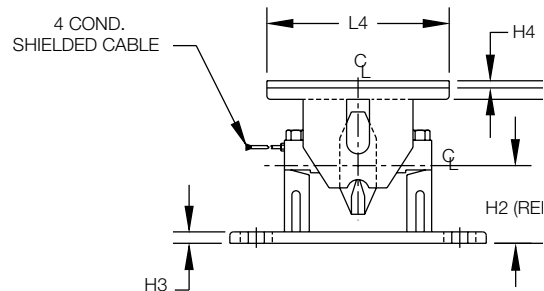
OPTIONAL FEATURES:

- 20,000-75,000 lb (9071.9-34,019.4 kg) capacity NTEP-certified load cells available for 1:10,000d, Class III L

TSA Specifications



10,000 lb-25,000 lb
(4535.9 kg-11,339.8 kg)



50,000 lb-75,000 lb
(22,679.6 kg-34,019.4 kg)

RATED CAPACITY	DIMENSIONS															
	C	H	H1	H2	H3	H4	L	L1	L2	L3	L4	L5	T	W	W1	
lb/inches																
10,000-25,000	1.75 DIA.	8.75	.62	4.62	.62	.25	14.00	11.00	3.00	.88	6.00	—	5/8-11 UNC-2B	6.00	3.00	
50,000-75,000	2.00 DIA.	11.00	.75	5.44	.75	.50	18.00	14.00	3.00	.88	12.75	2.00	3/4-10 UNC-2B	7.00	3.50	
kg/mm																
4535.9-11,339.8	44.5 DIA.	222.3	15.7	117.3	15.7	6.4	355.6	279.4	76.2	22.4	152.4	—	5/8-11 UNC-2B	152.4	76.2	
22,679.6-34,019.4	50.8 DIA.	279.4	19.1	138.2	19.1	12.7	457.2	355.6	76.2	22.4	323.9	50.8	3/4-10 UNC-2B	177.8	88.9	

TSA ORDER INFORMATION

Load Rating	Part #	Price
10,000-20,000-25,000 lb (4535.9-9071.9-11,339.8 kg)	17821	\$625.00
50,000-60,000-75,000 lb (22,679.6-27,215.5-34,019.4 kg)	17822	\$795.00

* Mount only; does not include load cell

See page 329 for Vishay Sensortronics load cell model 65058 specifications

See page 141 for Rice Lake Weighing Systems load cell model RL75058 specifications

See page 142 for welded-seal RL75060S cell