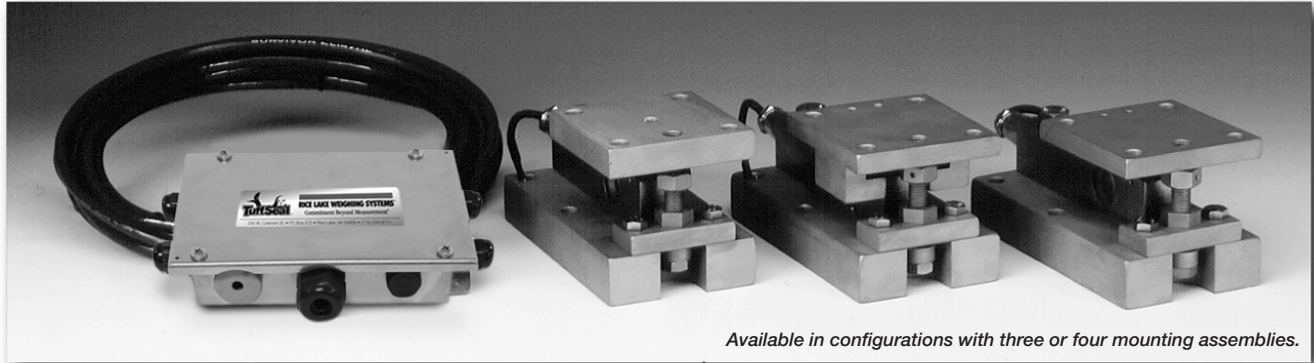


Weigh Modules • Tank and Hopper Kits

Load Cells
Now Have 30 ft
of Cable

Paramounts® HS (Hermetically-sealed Load Cells) Mild Steel, Light- to Medium-Capacity Tank Weighing Systems



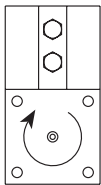
Available in configurations with three or four mounting assemblies.

Picture is a representation of actual product

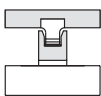
Weigh Modules

The Paramounts tank weighing system consists of one fixed-pin mount which allows only the top plate to rotate, one side-stop mount which allows the top plate to slide along the cell only, and one or more free-sliding mount(s) which allow the top plate to slide freely in all directions. This system provides self checking in applications of extreme temperature fluctuations and vibration while maintaining unparalleled system accuracy.

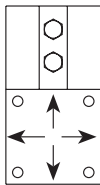
Load Cell Certifications:



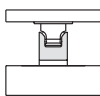
A: FIXED PIN



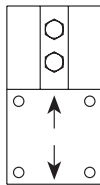
Fixed-Pin Mount



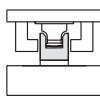
B: FREE SLIDING



Free-Sliding Mount

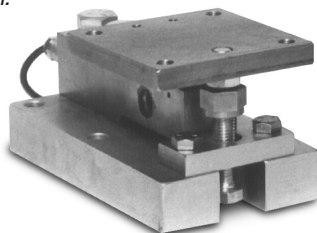


C: SIDE STOP



Side-Stop Mount

Free-Sliding Module with Flintec SB4 bending beam load cell. Refer to page 210 for load cell specifications.



Complete Kit Includes:

- 1 JB4SS NEMA 4X stainless steel signal trim junction box
- 1 fixed-pin module, 1 side-stop module, and 1 or 2 free-sliding assemblies. Each module is complete with a FLINTEC SB4 or SB10 (520 lb) stainless steel hermetically-sealed load cell (see pages 210 & 214)
- 30' of our Hostile Environment EL147HE SURVIVOR® load cell cable

APPLICATIONS:

- Light- to medium-capacity tanks and hoppers
- High-vibration mixers and blenders
- Process measurement and control

STANDARD FEATURES:

- Capacities (per module): 520-22,500 lb (2.3 kN/102.1 kg-100 kN/10,205.9 kg)
- Unique design allows for thermal expansion/contraction
- Jacking screw allows empty vessel to be lifted clear of load cell for maintenance
- Unique blind load hole eliminates unwanted side and eccentric loads
- Vessel is free to slide laterally on Teflon®-coated surfaces
- Load cell outputs are matched to $\pm 0.07\%$, allowing replacement without further calibration

OPTIONAL FEATURES:

- NTEP-certified load cells available: capacities 1125-11,250 lb

www.ricelake.com/loadcells

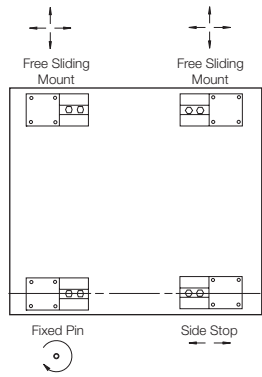
USA: 800-472-6703 • CANADA/MEXICO: 800-321-6703 • INTERNATIONAL: 715-234-9171

© 2008 Rice Lake Weighing Systems • November 15, 2008 • Prices and specifications subject to change without notice. Visit ricelake.com/loadcells for current prices.

**Load Cells
Now Have 30 ft
of Cable**

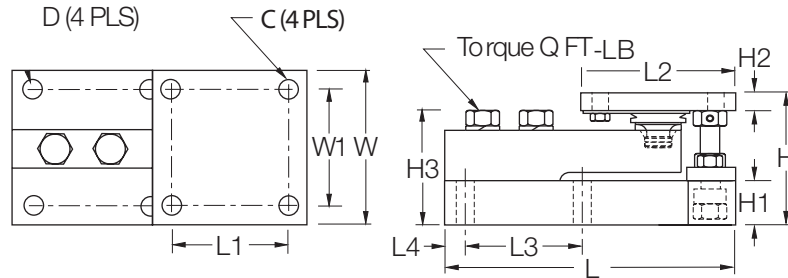
Paramounts HS Specifications

**Complete Kit!
Compare
& Save!**



VESSEL ARRANGEMENT

When arranged as illustrated, the vessel is fixed at one corner but is able to slide freely as indicated. This ensures that there is minimal side loading on the cells and at the same time the vessel is self-checking. The unique, patented blind load hole technology used in these mounts introduces the load at the neutral axis of the load cell which helps minimize the effects of side loads.



RATED CAPACITY	DIMENSIONS															Q (FT-LB)
	C	D	H	H1	*H2	**H2	H3	L	L1	L2	L3	L4	W	W1		
lb/inches																
520 (2.3 kN [†])	.375	.437	3.49	1.00	.50	.75	2.98	7.51	3.00	4.00	3.00	.50	4.00	3.00	65	
1125-5200 (5 - 23 kN [†])	.437	.437	3.58	1.25	.50	.75	3.06	7.51	3.00	4.00	3.00	.50	4.00	3.00	65	
11,250 (50 kN [†])	.562	.562	4.66	1.50	.62	1.00	4.09	9.19	3.87	5.00	3.87	.56	5.00	3.87	295	
22,500 (100 kN [†])	.688	.688	6.41	2.00	.75	1.25	5.73	11.46	4.75	6.00	4.75	.69	6.00	4.75	515	
kg/mm																
236.1	9.5	11.1	88.6	25.4	12.7	19.1	75.7	190.8	76.2	101.6	76.2	12.7	101.6	76.2		
510.8-2360	11.1	11.1	90.9	31.8	12.7	19.1	77.7	190.8	76.2	101.6	76.2	12.7	101.6	76.2		
5107.5	14.3	14.3	118.4	38.1	15.7	25.4	103.9	233.4	98.3	127.0	98.3	14.2	127.0	98.3		
10,215.0	17.5	17.5	162.8	50.8	19.1	31.8	145.5	291.1	120.7	152.4	120.7	17.5	152.4	120.7		

PARAMOUNTS HS MILD STEEL ORDER INFORMATION

Load Rating (Per Module)	Part #	Price
NTEP 3-Module Kit		
1125 lb (5 kN [†] /510.8 kg).....	29871.....	\$2,695.00
2250 lb (10 kN [†] /1021.5 kg).....	29872.....	\$2,695.00
5200 lb (23 kN [†] /2360.8 kg).....	29873.....	\$2,695.00
11,250 lb (50 kN [†] /5107.5 kg).....	29874.....	\$3,295.00
NTEP 4-Module Kit		
1125 lb (5 kN [†] /510.8 kg).....	29875.....	\$3,395.00
2250 lb (10 kN [†] /1021.5 kg).....	29876.....	\$3,395.00
5200 lb (23 kN [†] /2360.8 kg).....	29877.....	\$3,395.00
11,250 lb (50 kN [†] /5107.5 kg).....	29878.....	\$3,895.00

* Side Stop and Free Sliding Units

** Fixed Pin units

[†] kN = Kilonewtons 1 kN = 224.8089 lb

PARAMOUNTS HS MILD STEEL ORDER INFORMATION

Load Rating (Per Module)	Part #	Price
Non-NTEP 3-Module Kit		
520 lb (2.3KN/236.1 kg)	38205.....	\$2,295.00
1125 lb (5KN/510.8 kg)	17977.....	\$2,695.00
2250 lb (10KN/1021.5 kg)	17978.....	\$2,695.00
5200 lb (23KN/2360.8 kg)	17979.....	\$2,695.00
11,250 lb (50KN/5107.5 kg)	17980.....	\$3,295.00
22,500 lb (100KN/10,215.0 kg) ..	17981.....	\$4,095.00
Non-NTEP 4-Module Kit		
520 lb (2.3KN/236.1 kg)	38206.....	\$4,395.00
1125 lb (5KN/510.8 kg)	17984.....	\$3,525.00
2250 lb (10KN/1021.5 kg)	17985.....	\$3,525.00
5200 lb (23KN/2360.8 kg)	17986.....	\$3,525.00
11,250 lb (50KN/5107.5 kg)	17987.....	\$4,095.00
22,500 lb (100KN/10,215.0 kg) ..	17988.....	\$4,995.00

***Conduit Adapter, 1/2-14 NPT 17703.....\$35.00

*** Suitable for Flintec SB4 Load Cell