

Standard Features

- Internal calibration
- Anti-electrostatic 360° transparent windshield
- Eight-digit, 16.5 mm high liquid crystal display (LCD) with backlight
- Single-touch response setting for environment
- 40-step bar graph display
- RS-232 interface for connecting to printer or PC
- ISO/GLP/GMP compliant printing record
- Plastic housing
- Underweigh hook

Specifications

Weighing Units:
Carat, Pennyweight, Troy Ounce, Decimal Ounce, Decimal Pound (See technical manual for complete listing)

Operating Modes:
Counting, Percentage, Limit Function (Checkweighing), Specific Gravity

Power:
120 VAC adapter

RS-232:
Baud rate - 1200/2400/4800/9600/19200 bps, 8/7 data bits, Parity bit-None/Odd/Even

Calibration Weight:
TA Plus-124: 120 g
TA Plus-224: 220 g

Operating Temperature:
50 °F to 86 °F (10 °C to 30 °C) 80% RH or lower

Est. Weight:
6.4 lb (2.9 kg)

Warranty:
Five-year limited

Return Policy:
Rice Lake Standard Policy

Model	Capacity	Readability	Repeatability	Linearity	Pan Size	Weighing Chamber	Dimensions	Part #	List Price
TA Plus-124	120 g	0.0001 g	1 division	1 division	Ø 3.15 in (80 mm)	225 mm H × 213 mm W × 213 mm D	11 × 7.9 × 12 in (290 × 200 × 306 mm)	196569	Consult
TA Plus-224	220 g	0.0001 g	1 division	1 division	Ø 3.15 in (80 mm)	225 mm H × 213 mm W × 213 mm D	11 × 7.9 × 12 in (290 × 200 × 306 mm)	196570	Consult

Options/Accessories

Part #	Description	Price
108255	115 VAC adapter	Consult
108256	230 VAC adapter	Consult
108257	In-use cover	Consult
107398	Additional operating manual	Consult
75351	WinWedge® Tal software	Consult
66535	Null modem cable	Consult
119919	AbleCable, requires null modem cable PN 66535	Consult



Standard Features

- LCD display
- Quick response
- Accumulation, counting and percentage modes
- 13 different units of measure
- Detachable enclosed weighing chamber (in capacities = 1 kg)
- Battery operation for up to 40 hours of continuous use (without backlight)
- RS-232 interface for connecting to printer or PC
- Plastic enclosure

Specifications

Weighing Units:
Gram, Ounce, Pound, Carat, Pennyweight, Troy Ounce, Grain (see technical manual for complete listing)

Operating Modes:
Weighing, Percent Weighing, Parts Counting, Accumulation

Power:
AC adapter (12 V/500 mA); internal rechargeable battery (6 V/1.2 Ah)

Stabilization Time:
2 seconds

Operating Temperature:
32 °F to 104 °F (0 °C to 40 °C)

Calibration Weight:
EQ-300: 300 g,
EQ-600: 600 g,
EQ-1500: 1,500 g,
EQ-3000: 3,000 g,
EQ-6000: 6,000 g

Est. Weight:
6.6 lb (3 kg)

Battery Life:
Up to 40 hours of continuous use (without backlight)

Return Policy:
Rice Lake standard policy

Warranty:
One-year limited

Approval:
CE Approved



Model	Capacity	Readability	Repeatability	Linearity	Weighing Chamber	Pan Size	Part #	List Price
EQ-300	300 g	0.01 g	0.01 g	0.02 g	6.7 × 5.7 × 3.1 in (170 × 145 × 80 mm)	Ø 4.7 in (Ø 120 mm)	165338	Consult
EQ-600	600 g	0.02 g	0.02 g	0.04 g	6.7 × 5.7 × 3.1 in (170 × 145 × 80 mm)	Ø 4.7 in (Ø 120 mm)	165339	Consult
EQ-1500	1,500 g	0.05 g	0.05 g	0.1 g	N/A	4.8 × 5.6 in (122 × 142 mm)	165340	Consult
EQ-3000	3,000 g	0.1 g	0.1 g	0.2 g	N/A	4.8 × 5.6 in (122 × 142 mm)	165341	Consult
EQ-6000	6,000 g	0.2 g	0.2 g	0.4 g	N/A	4.8 × 5.6 in (122 × 142 mm)	165342	Consult

Options/Accessories

Part #	Description	Price
41279	Printer cable, DB9M to 25-pin M	Consult
103142	SP742 dot matrix printer, tear bar	Consult
119919	AbleCable RS-232/USB cable (requires 130789)	Consult
130789	Slim line null modem adapter	Consult
131135	Aluminum case	Consult
165183	AC adapter, 110-240 VAC, interchangeable plugs	Consult



PN 165183 Multi-range AC adapter and multi-plug



SMALL ANIMAL /
LABORATORY SCALES

Standard Features

- Large, 16.5 mm-high, backlit liquid crystal display (LCD)
- 12 units of measurement
- Mono-metal tuning fork sensor (MMTF) provides quick response and stability
- 20-step bar graph display
- Semi-automatic calibration, external weight
- Plastic housing on models <1,000 g
- Plastic top and die-cast bottom on models >1,000 g

Specifications

Weighing Units:
 Carat, Pennyweight, Troy Ounce, Decimal Ounce, Decimal Pound (See technical manual for complete listing)

Operating Modes:
 Weight, Count, Percentage, Limit Function (Checkweighing)

Power:
 115 V AC adapter included (230 V AC optional)

Operating Temperature:
 41 °F to 95 °F (5 °C to 35 °C)

Calibration Weight:
 TC-620: 600 g
 TC-1200: 1,200 g
 TC-4200: 4,000 g
 TC-6200: 6,200 g

Est. Weight:
 TC-620: 2.9 lb (1.3 kg)
 TC-1200: 2.9 lb (1.3 kg)
 TC-4200: 5.9 lb (2.7 kg)
 TC-6200: 5.9 lb (2.7 kg)

Warranty:
 Five-year limited

Return Policy:
 Rice Lake standard policy

Model	Capacity	Readability	Repeatability	Linearity	Pan Size	Dimensions	Part #	List Price
TC-620	620 g	0.01 g	1 division	1 division	Ø 5.5 in (140 mm)	9.2 × 7.1 × 2.9 in (234 × 180 × 74 mm)	107232	Consult
TC-1200	1,200 g	0.1 g	1 division	1 division	6.7 × 5.6 in (170 × 142 mm)	10.4 × 7.5 × 3.4 in (264 × 191 × 86 mm)	107233	Consult
TC-4200	4,200 g	0.1 g	1 division	1 division	7 × 6.2 in (178 × 158 mm)	10.4 × 7.5 × 3.4 in (264 × 191 × 86 mm)	107234	Consult
TC-6200	6,200 g	0.1 g	1 division	1 division	7 × 6.2 in (178 × 158 mm)	10.4 × 7.5 × 3.4 in (264 × 191 × 86 mm)	107235	Consult

Options/Accessories

Part #	Description	Price
107236	Rechargeable battery TC-620, TC-1200, 32 hr	Consult
107237	Rechargeable battery TC-4200, TC-6200, 32 hr	Consult
107238	RS-232 option with DIN-5-pin connector (not compatible with battery option) (TC-620, TC-1200)	Consult
107239	RS-232 option with DIN-5-pin connection (not compatible with battery option) (TC-4200,TC-6200)	Consult
107240	In-use dust cover, 620 g to 1,200 g	Consult
107250	In-use dust cover, 4,200 g to 6,200 g	Consult
109236	Underweigh hook TC-620, TC-1200	Consult
109292	Underweigh hook TC-4200, TC-6200	Consult
42566	120 VAC adapter/12 VDC	Consult
42168	230 VAC adapter	Consult
107243	Additional operating manual	Consult
75351	WinWedge® software	Consult
115303	5-pin DIN to DB9F RS-232 cable	Consult
115148	RS-232 manual	Consult



Standard Features

- Stainless steel, IP65 top housing
- Large, 18 mm LCD with backlight
- Selectable modes
- 13 units of measurement
- Mono-metal tuning fork sensor (MMTS) provides quick response and stability
- Washdown with IP65 rating
- 115 VAC adapter included (230 VAC optional)
- Semi-automatic calibration, external weight
- RS-232 interface for connecting to printer or PC

OPTIONS

- Battery holder
- Underweigh hook
- Waterproof RS-232 cable

Specifications

Weighing Units:

Carat, Pennyweight, Troy Ounce, Decimal Ounce, Decimal Pound (See technical manual for complete listing)

Operating Modes:

Weight, Count, Percentage, Limit Function (Checkweighing)

Power:

120 V AC (adapter included)

Battery Option:

Nickel-cadmium battery, 12-hour run time, 24-hour charge time

RS-232 Baud Rate:

1200/2400/2800/9600;
Data bits - 8, Connector - DIN 5-pin

Calibration Weight:

TP-620: 600 g
TP-6200: 6,000 g
TP-8200: 8,000 g

Operating Temperature:

41 °F to 95 °F (5 °C to 35 °C)

Est. Weight:

6.2 lb (2.8 kg)

Warranty:

Five-year limited

Return Policy:

Rice Lake standard policy

Model	Capacity	Resolution	Calibration	Part #	List Price
TS-620	620 g	0.01 g	600 g	108156	Consult
TS-6200	6,200 g	0.1 g	6,000 g	108157	Consult
TS-8200	8,200 g	0.1 g	8,000 g	112182	Consult

Options/Accessories

Part #	Description	Price
108499	AC adapter, multi-range 110:230 VAC, 6VDC	Consult
72440	9-pin D-sub F-25-Pin D-sub connector	Consult
22436	9-pin D-sub F to blunt end	Consult
66535	Null modem cable	Consult
119064	Slimline adapter, null modem gender changer	Consult
109236	Underweigh hook	Consult
109238	Waterproof RS-232 cable	Consult
109050	Additional operating manual	Consult
112611	Battery operator manual	Consult
112516	Battery holder option, requires four AA batteries (not included)	Consult
119919	AbleCable, requires null modem cable PN 66535	Consult

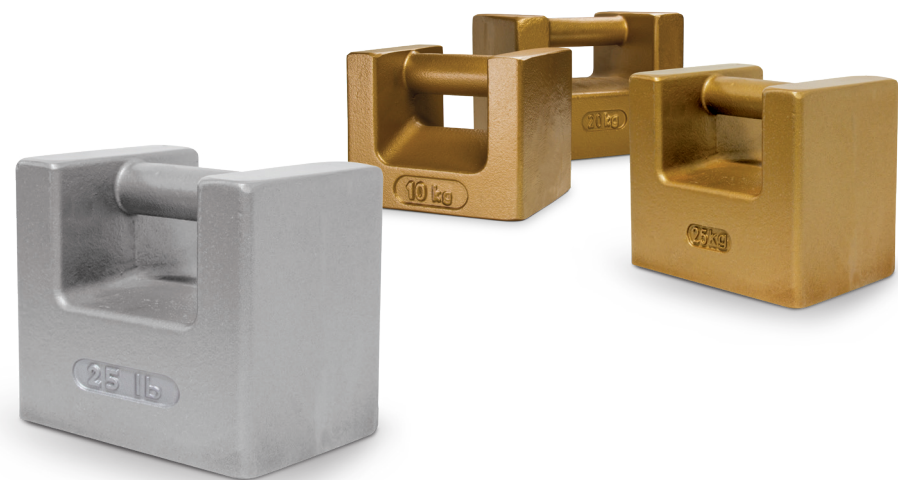


PN 108499 Multi-range AC adapter and multi-plug



SMALL ANIMAL /
LABORATORY SCALES

Calibration Weights



Standard Features

- Cast iron
- Grip handle
- ASTM Class 6
- Imperial or metric
- Made in the U.S.A.

Options

- Certificate of Calibration
- Stamped serial number

Animal health scale calibration requires certified weights that can be traced to the National Institute of Standards and Technology (NIST). This will ensure your scale is calibrated properly and ready for the requirements of weighing in medical settings. Consumer weights such as barbells or similar items may not provide an accurate weight to calibrate your scale. For example, a 5-pound consumer weight, such as a barbell, may actually weigh between 4.75 and 5.25 pounds. Calibration weights with traceability to NIST have a manufactured and adjusted tolerance of +/- 230 milligrams. Using a NIST-traceable calibration weight will ensure your scale is calibrated correctly and presents accurate weighments for proper patient care.

Part Number/Price

Part #	Description	Price
Imperial Weights		
12870	20 lb ASTM Class 6	Consult
12833	25 lb ASTM Class 6	Consult
12839	50 lb ASTM Class 6	Consult
Metric Weights		
12767	10 kg ASTM Class 6	Consult
12771	20 kg ASTM Class 6	Consult
12775	25 kg ASTM Class 6	Consult