

# Bench Scales

## TABLE OF CONTENTS

<b>BenchMark® SL</b> .....	<b>162</b>	<b>Ishida iPC Series</b> .....	<b>193</b>
<i>Light-capacity Bench Scale</i>		<i>Portable Bench Scale</i>	
<b>BenchMark® CW-80B</b> .....	<b>163</b>	<b>Versa-portion®</b> .....	<b>194</b>
<i>Light-capacity Bench Scale</i>		<i>Compact Scale</i>	
<b>BenchMark® SL/HE</b> .....	<b>164</b>	<b>BenchPro™ BP-P</b> .....	<b>195</b>
<i>Spring Loaded/Hostile Environment Bench Scale</i>		<i>Postal Bench Scale</i>	
<b>CW-90B</b> .....	<b>165</b>	<b>BenchPro™ BP-S</b> .....	<b>196</b>
<i>Light-capacity Bench Scale</i>		<i>Shipping Bench Scale</i>	
<b>CW-90XB</b> .....	<b>166</b>	<b>BenchPro™ BP-SB</b> .....	<b>197</b>
<i>Light-capacity Bench Scale</i>		<i>Shipping Bench Scale with Ball Top Shroud</i>	
<b>Ready-n-Weigh Bench Scale System</b> .....	<b>167</b>	<b>BenchPro™ BP-SR</b> .....	<b>198</b>
<i>CW-90B Bench Scale and 380 Indicator Package</i>		<i>Shipping Bench Scale with Roller Conveyor</i>	
<b>Ready-n-Weigh Bench Scale System</b> .....	<b>168</b>	<b>BenchMark® MSC-10</b> .....	<b>199</b>
<i>CW-90B Bench Scale and 480/480 Plus Indicator Package</i>		<i>Mobile Scale Cart</i>	
<b>Ready-n-Weigh Bench Scale System</b> .....	<b>170</b>	<b>BenchMark® MSC-20</b> .....	<b>200</b>
<i>CW-90B Bench Scale and 482/482 Plus Indicator Package</i>		<i>Mobile Scale Cart</i>	
<b>Ready-n-Weigh Bench Scale System</b> .....	<b>172</b>	<b>BenchMark® MSC-30</b> .....	<b>201</b>
<i>CW-90B Bench Scale and 680 Indicator Package</i>		<i>Mobile Scale Cart</i>	
<b>Ready-n-Weigh Bench Scale System</b> .....	<b>173</b>	<b>BenchMark® MSC-40</b> .....	<b>202</b>
<i>CW-90XB Bench Scale and 380 Indicator Package</i>		<i>Mobile Scale Cart</i>	
<b>Ready-n-Weigh Bench Scale System</b> .....	<b>174</b>	<b>Bench Scale Ball Transfer</b>	
<i>CW-90XB Bench Scale and 480/480 Plus Indicator Package</i>		<b>and Roller Conveyor</b> .....	<b>203</b>
<b>Ready-n-Weigh Bench Scale System</b> .....	<b>176</b>	<b>Bench Scale Columns</b> .....	<b>204</b>
<i>CW-90XB Bench Scale and 482/482 Plus Indicator Package</i>			
<b>Ready-n-Weigh Bench Scale System</b> .....	<b>178</b>		
<i>CW-90XB Bench Scale and 680 Indicator Package</i>			
<b>BenchMark® MS</b> .....	<b>179</b>		
<i>Mild Steel Bench Scale</i>			
<b>BenchMark® SS</b> .....	<b>180</b>		
<i>Stainless Steel Bench Scale</i>			
<b>BenchMark® HE</b> .....	<b>181</b>		
<i>Hostile Environment Series Bench Scale</i>			
<b>BenchMark® HE-X</b> .....	<b>182</b>		
<i>Hostile Environment Extreme Bench Scale</i>			
<b>BenchMark® LP</b> .....	<b>184</b>		
<i>Low-Profile Bench Scale</i>			
<b>BenchMark® HD</b> .....	<b>185</b>		
<i>Heavy-Duty Bench Scale</i>			
<b>BenchMark® HD-1 Aviation</b> .....	<b>186</b>		
<i>Heavy Duty Bench Scale</i>			
<b>BenchMark® HD-2 Aviation</b> .....	<b>188</b>		
<i>Heavy Duty Bench Scale</i>			
<b>BenchMark® HD-3 Aviation</b> .....	<b>190</b>		
<i>Heavy Duty Bench Scale</i>			
<b>BenchMark® HDP</b> .....	<b>192</b>		
<i>Portable Heavy-Duty Bench Scale</i>			

Product names, logos, brands and other trademarks featured or referred to within this publication are the property of their respective trademark holders.

# BenchMark® SL

Light-capacity Bench Scale

BENCH SCALES



## Approvals



Measurement  
Canada  
Approved



## Part Number/Price

Part #	Platform Capacity	Dimensions (L × W × H)	Est. Weight	Price
18575*	2 lb (1 kg)	10 × 10 × 3.15 in	13 lb	\$710.00
18576	5 lb (2.5 kg)	10 × 10 × 3.15 in	13 lb	\$710.00
18577	10 lb (5 kg)	10 × 10 × 3.15 in	13 lb	\$710.00
18578	20 lb (10 kg)	10 × 10 × 3.15 in	13 lb	\$710.00
18579	30 lb (15 kg)	10 × 10 × 3.15 in	13 lb	\$710.00
32914	30 lb (15 kg)	12 × 12 × 3.25 in	14 lb	\$800.00
32913	50 lb (25 kg)	12 × 12 × 3.25 in	14 lb	\$800.00
35198	100 lb (50 kg)	12 × 12 × 3.25 in	14 lb	\$800.00

## Options/Accessories

Part #	Description	Catalog Page #
Consult	Scale columns	See page 204
Consult	Ball transfer and roller conveyor scale tops	See page 203
Consult	Mobile scale carts	See page 199 to page 202

\*Non-NTEP Certified or Measurement Canada approved

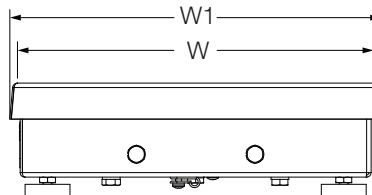
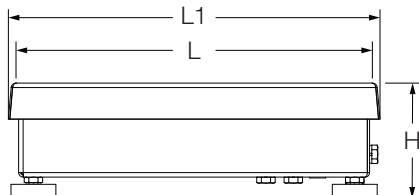
## Dimensions

BenchMark SL			
10 × 10 in			
H	3.15 in	W	10.00 in
L	10.00 in	W1	10.25 in
L1	10.25 in		

Note: 1 in = 25.4 mm

12 × 12 in			
H	3.25 in	W	12.00 in
L	12.00 in	W1	12.25 in
L1	12.25 in		

Note: 1 in = 25.4 mm



## Standard Features

- NTEP Certified IP66 aluminum load cell
- 304 stainless steel construction
- LifeGuard™ base design isolates load cell from overloads and shock loads for added durability
- Specially designed adjustable support feet provide exceptional traction and won't scratch surfaces

## Specifications

### Load Cell, NTEP Certified:

IP66 aluminum and environmentally sealed

### Output Impedance:

350 ohm

### Maximum Overload:

200%

### Overload Protection:

Shock-absorbing spider

### Scale Frame:

AISI304L, straight line finish, Ra= 45 +/- 10

### Scale Cover:

AISI304L, straight line finish, Ra= 45 +/- 10

### Cable Length:

10 ft (3 m)

### Compensated Temperature Range:

14 °F to 104 °F (-10 °C to 40 °C)

### Warranty:

Two-year limited

### Approvals:

NTEP 95-072, Class III 5,000 d  
Measurement Canada AM-5082  
Load cell is cFMus approved

# BenchMark® CW-80B

Light-capacity Bench Scale

BENCH SCALES



## Standard Features

- NTEP Certified, IP67 stainless steel load cell
- 304 stainless steel construction
- LifeGuard™ base design isolates load cell from overloads and shock loads for added durability
- Specially designed adjustable support feet provide exceptional traction and won't scratch surfaces

## Specifications

### Load Cell, NTEP Certified:

IP67 stainless steel and environmentally sealed

### Output Impedance:

350 ohm

### Maximum Overload:

200%

### Overload Protection:

Shock-absorbing spider

### Scale Frame:

AISI304L, straight line finish, Ra= 45 +/- 10

### Scale Cover:

AISI304L, straight line finish, Ra= 45 +/- 10

### Cable Length:

10 ft (3 m)

### Compensated Temperature Range:

14 °F to 104 °F (-10 °C to 40 °C)

### Warranty:

Two-year limited

### Approvals:

NTEP 96-107, Class III, 3000 d  
Measurement Canada AM-5156  
Load cell is FM approved

## Approvals



Measurement  
Canada  
Approved



## Part Number/Price

Part #	Platform Capacity	Dimensions (L x W x H)	Est. Weight	Price
35075	6 lb (3 kg)	10 x 10 x 3.15 in	13 lb	\$865.00
35076	10 lb (5 kg)	10 x 10 x 3.15 in	13 lb	\$865.00
35077	15 lb (7 kg)	10 x 10 x 3.15 in	13 lb	\$865.00
35078	30 lb (15 kg)	10 x 10 x 3.15 in	13 lb	\$865.00
35079	30 lb (15 kg)	12 x 12 x 3.25 in	14 lb	\$955.00
35080	60 lb (30 kg)	12 x 12 x 3.25 in	14 lb	\$955.00

## Options/Accessories

Part #	Description	Catalog Page #
Consult	Scale columns	See page 204
Consult	Ball transfer and roller conveyor scale tops	See page 203
Consult	Mobile scale carts	See page 199 to page 202

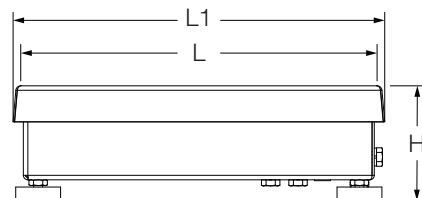
## Dimensions

### CW-80B

#### 10 x 10 in

H	3.15 in	W	10.00 in
L	10.00 in	W1	10.25 in
L1	10.25 in		

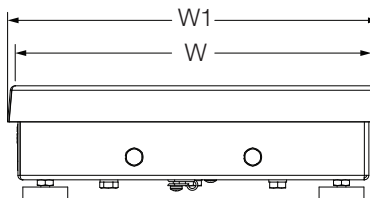
Note: 1 in = 25.4 mm



#### 12 x 12 in

H	3.25 in	W	12.00 in
L	12.00 in	W1	12.25 in
L1	12.25 in		

Note: 1 in = 25.4 mm



# BenchMark® SL/HE

Spring Loaded/Hostile Environment Bench Scale

BENCH SCALES



## Standard Features

- NTEP Certified, IP69K stainless steel, hermetically sealed load cell
- 304 stainless steel construction
- LifeGuard™ base design isolates load cell from overloads and shock loads for added durability
- Specially designed adjustable support feet provide exceptional traction and won't scratch surfaces

## Specifications

### Load Cell, NTEP Certified:

IP69K stainless steel, hermetically sealed

### Output Impedance:

350 ohm

### Maximum Overload:

200%, except 150% for 30 lb

### Overload Protection:

Shock-absorbing spider

### Scale Frame:

AISI304L, straight line finish, Ra= 45 +/- 10

### Scale Cover:

AISI304L, straight line finish, Ra= 45 +/- 10

### Cable Length:

10 ft (3 m)

### Compensated Temperature Range:

14 °F to 104 °F (-10 °C to 40 °C)

### Warranty:

Three-year limited  
(includes water ingress)

### Approvals:

NTEP 95-072, Class III 5,000 d  
Measurement Canada AM-5082  
Load cell is FM approved

## Approvals



Measurement  
Canada  
Approved



## Part Number/Price

Part #	Platform Capacity	Dimensions (L x W x H)	Est. Weight	Price
86942	5 lb (2.5 kg)	10 x 10 x 3.15 in	13 lb	\$1,288.00
86943	10 lb (5 kg)	10 x 10 x 3.15 in	13 lb	\$1,288.00
86944	20 lb (10 kg)	10 x 10 x 3.15 in	13 lb	\$1,288.00
86945	30 lb (15 kg)	10 x 10 x 3.15 in	13 lb	\$1,288.00
86946	30 lb (15 kg)	12 x 12 x 3.25 in	13 lb	\$1,378.00
86947	50 lb (25 kg)	12 x 12 x 3.25 in	14 lb	\$1,378.00
86948	100 lb (50 kg)	12 x 12 x 3.25 in	14 lb	\$1,378.00

## Options/Accessories

Part #	Description	Catalog Page #
Consult	Scale columns	See page 204
Consult	Ball transfer and roller conveyor scale tops	See page 203
Consult	Mobile scale carts	See page 199 to page 202

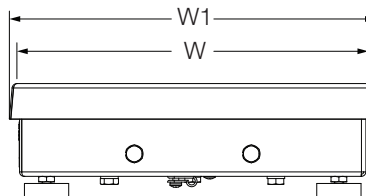
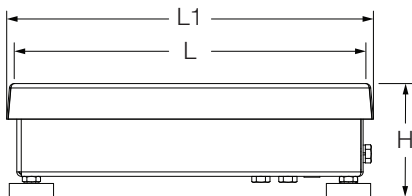
## Dimensions

BenchMark SL/HE			
10 x 10 in			
H	3.15 in	W	10.00 in
L	10.00 in	W1	10.25 in
L1	10.25 in		

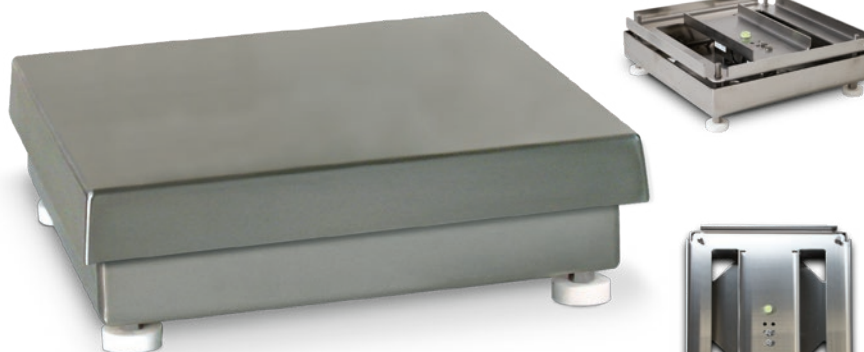
Note: 1 in = 25.4 mm

12 x 12 in			
H	3.25 in	W	12.00 in
L	12.00 in	W1	12.25 in
L1	12.25 in		

Note: 1 in = 25.4 mm







### Standard Features

- IP67 aluminum environmentally sealed load cell
- 304 stainless steel construction
- Meets HACCP requirements
- Five-point overload protection
- Specially designed adjustable support feet provide exceptional traction and will not scratch surfaces

### Specifications

#### Load Cell, NTEP Certified:

IP67 aluminum, environmentally sealed

#### Output Impedance:

350 ohm

#### Maximum Overload:

180% to 200% depending on capacity

#### Overload Protection:

Five-point, independently adjusted

#### Scale Frame:

AISI304L, straight line finish, Ra= 45 +/- 10

#### Scale Cover:

AISI304L, straight line finish, Ra= 45 +/- 10

#### Cable Length:

34 in or 10 ft

#### Compensated Temperature Range:

14 °F to 104 °F (-10 °C to 40 °C)

#### Warranty:

Two-year limited

#### Approvals:

NTEP 95-072, Class III 5,000 d  
Measurement Canada AM-5082  
NSF  
Load cell is cFmus Approved

### Approvals



Measurement  
Canada  
Approved



### Part Number/Price

Part #		Platform Capacity	Dimensions (L × W × H)	Est. Weight	Price
10 ft cable	34 in cable				
112599	106137	5 lb (2.5 kg)	10 × 10 × 4.25 in	14 lb	\$660.00
112601	106138	10 lb (5 kg)	10 × 10 × 4.25 in	14 lb	\$660.00
112603	106139	25 lb (10 kg)	10 × 10 × 4.25 in	14 lb	\$660.00
112605	106140	25 lb (10 kg)	12 × 12 × 4.25 in	17 lb	\$750.00
112607	106141	50 lb (25 kg)	12 × 12 × 4.25 in	17 lb	\$750.00
112609	106142	100 lb (50 kg)	12 × 12 × 4.25 in	17 lb	\$750.00

### Options/Accessories

Part #	Description	Catalog Page #
Consult	Scale columns	See page 204
Consult	Ball transfer and roller conveyor scale tops	See page 203
Consult	Mobile scale carts	See page 199 to page 202

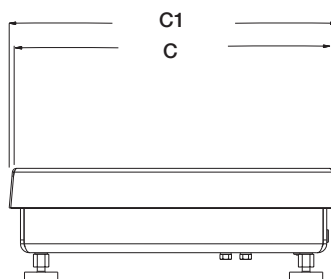
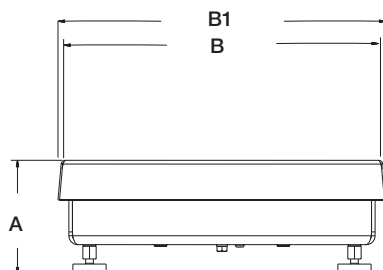
### Dimensions

CW-90B			
10 × 10 in			
A	4.25 in	C	10.00 in
B	10.00 in	C1	10.25 in
B1	10.25 in		

Note: 1 in = 25.4 mm

12 × 12 in			
A	4.25 in	C	12.00 in
B	12.00 in	C1	12.25 in
B1	12.25 in		

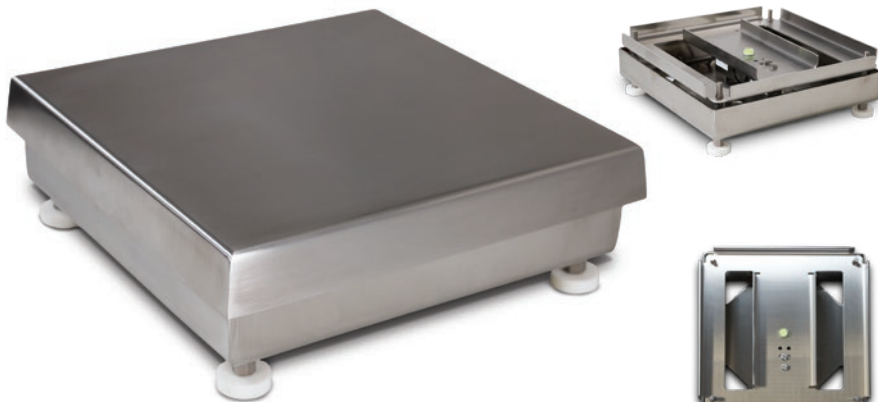
Note: 1 in = 25.4 mm



# CW-90XB

Light-capacity Bench Scale

BENCH SCALES



## Standard Features

- IP69K, stainless steel hermetically sealed load cell
- 304 stainless steel construction
- Meets HACCP requirements
- Five-point overload protection
- Specially designed adjustable support feet provide exceptional traction and will not scratch surfaces

## Specifications

### Load Cell, NTEP Certified:

IP69K stainless steel and hermetically sealed

### Output Impedance:

350 ohm

### Maximum Overload:

180% to 200% depending on capacity

### Overload Protection:

Five-point, independently adjusted

### Scale Frame:

AISI304L, straight line finish, Ra= 45 +/- 10

### Scale Cover:

AISI304L, straight line finish, Ra= 45 +/- 10

### Cable Length:

34 in or 10 ft

### Compensated Temperature Range:

14 °F to 104 °F (-10 °C to 40 °C)

### Warranty:

Three-year limited  
(includes water ingress)

### Approvals:

NTEP 95-072, Class III 5,000 d  
Measurement Canada AM-5082  
NSF  
Load cell is FM Approved

## Approvals



Measurement  
Canada  
Approved



## Part Number/Price

Part #	Platform Capacity	Dimensions (L × W × H)	Est. Weight	Price	
10 ft Cable	34 in Cable				
112600	106143	5 lb (2.5 kg)	10 × 10 × 4.25 in	14 lb	\$1,222.00
112602	106144	10 lb (5 kg)	10 × 10 × 4.25 in	14 lb	\$1,222.00
112604	106145	25 lb (10 kg)	10 × 10 × 4.25 in	14 lb	\$1,222.00
112606	106146	25 lb (10 kg)	12 × 12 × 4.25 in	17 lb	\$1,312.00
112608	106147	50 lb (25 kg)	12 × 12 × 4.25 in	17 lb	\$1,312.00
112610	106148	100 lb (50 kg)	12 × 12 × 4.25 in	17 lb	\$1,312.00

## Options/Accessories

Part #	Description	Catalog Page #
Consult	Scale columns	See page 204
Consult	Ball transfer and roller conveyor scale tops	See page 203
Consult	Mobile scale carts	See page 199 to page 202

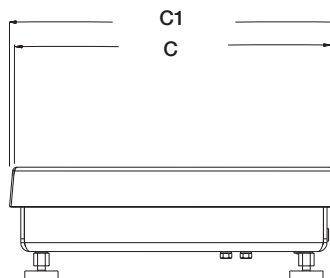
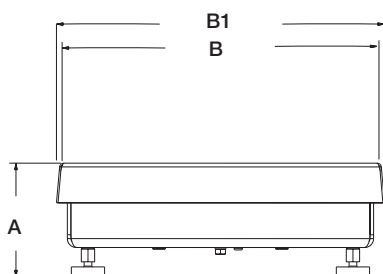
## Dimensions

CW-90XB			
10 × 10 in			
A	4.25 in	C	10.00 in
B	10.00 in	C1	10.25 in
B1	10.25 in		

Note: 1 in = 25.4 mm

12 × 12 in			
A	4.25 in	C	12.00 in
B	12.00 in	C1	12.25 in
B1	12.25 in		

Note: 1 in = 25.4 mm



# Ready-n-Weigh Bench Scale System

CW-90B Bench Scale and 380 Indicator Package

BENCH SCALES



## Approvals



Measurement  
Canada  
Approved



## CW-90B with 380 Package

Part #	Capacity	Dimensions (L x W x H)	Est. Weight	Price
208528	5 lb (2.5 kg)	10 x 10 x 4.25 in	24 lb	\$1,390.00
208529	10 lb (5 kg)	10 x 10 x 4.25 in	24 lb	\$1,390.00
208530	25 lb (10 kg)	10 x 10 x 4.25 in	24 lb	\$1,390.00
208531	25 lb (10 kg)	12 x 12 x 4.25 in	27 lb	\$1,480.00
208532	50 lb (25 kg)	12 x 12 x 4.25 in	27 lb	\$1,480.00
208533	100 lb (50 kg)	12 x 12 x 4.25 in	27 lb	\$1,480.00

## Options/Accessories

Part #	Description	Price
206433†	External AC adapter	\$54.00
204258	Real-time clock module	\$127.00



† US plug (NA) - Type A

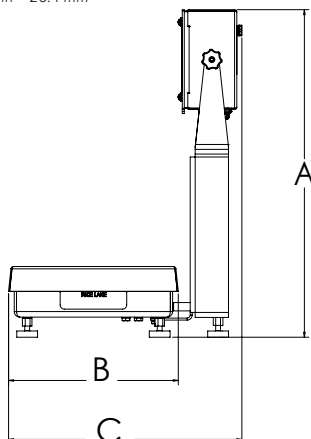
## Dimensions

CW-90B Bench Scale and 380 Indicator 10 x 10 in			
A	19.68 in	E	9.43 in
B	10.20 in	F	4.25 in
C	14.02 in	G	10.20 in
D	13.36 in		

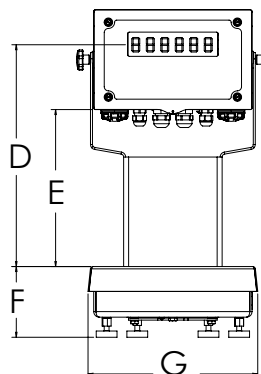
Note: 1 in = 25.4 mm

12 x 12 in			
A	19.56 in	E	9.30 in
B	12.38 in	F	4.25 in
C	16.10 in	G	12.35 in
D	13.23 in		

Note: 1 in = 25.4 mm



CW-90B with 380 indicator



## Standard Features

- Package includes scale with IP67 aluminum environmentally sealed load cell with an indicator and 12-inch column
- Factory calibrated with indicator setup and configured for 5,000 divisions
- Scale includes rubber feet to provide exceptional traction and avoid scratching surfaces along with removable top cover for ease of cleaning
- Standard RS-232 serial port for connecting to a variety of peripherals
- Powered by four alkaline C-cell batteries (not included) or external AC adapter (not included)

## CW-90B Specifications

### Load Cell, NTEP Certified:

IP67 aluminum, environmentally sealed

### Scale Construction:

304 stainless steel

### Maximum Overload:

180% to 200% depending on capacity

### Overload Protection:

Five-point, independently adjusted

### Scale Frame:

AISI304L, straight line finish, Ra= 45 +/- 10

### Scale Cover:

AISI304L, straight line finish, Ra= 45 +/- 10

### Cable Length:

34 in

### Compensated Temperature Range:

14 °F to 104 °F (-10 °C to 40 °C)

### Approvals:

NTEP 21-051, Class III 5,000 d

Measurement Canada AM-6184

CE

cULus

### Warranty:

Two-year limited

## 380 Specifications

### Power:

Batteries: 4 alkaline C-cell

Optional: 115/230 VAC to 12 VDC adapter

### Battery Life:

45 hours with 4 x 350 ohm load cells, low backlight

### Communication Ports:

One RS-232 (three-wire)

One USB 2.0

### Display:

Six 1 in (25 mm) tall, LCD digits

### Status Annunciators:

g, lb, t, tn, kg, oz, battery level, PT, LT, gross, zero, unstable, net

### Keys/Buttons:

5 tactile buttons

### Rating/Material:

Enclosure: IP66, 304 Stainless steel

### Approvals:

NTEP 21-051

Measurement Canada AM-6184

CE Approved

cULus Listed

### Warranty:

Two-year limited

# Ready-n-Weigh Bench Scale System

CW-90B Bench Scale and 480/480 Plus Indicator Package

BENCH SCALES



Scale and Indicator Package



## Approvals



Measurement  
Canada  
Approved



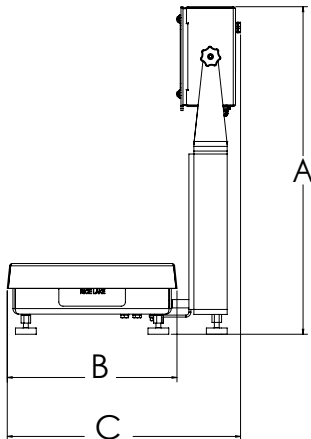
## Dimensions

### CW-90B Bench Scale and 480/480 Plus Indicator

#### 10 × 10 in

A	19.50 in	E	9.25 in
B	10.25 in	F	4.25 in
C	14.53 in	G	10.25 in
D	13.25 in		

Note: 1 in = 25.4 mm

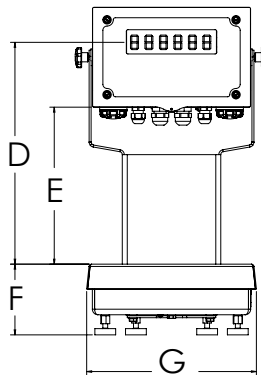


CW-90B with 480 indicator

#### 12 × 12 in

A	19.50 in	E	9.25 in
B	12.25 in	F	4.25 in
C	16.53 in	G	12.25 in
D	13.25 in		

Note: 1 in = 25.4 mm



## Standard Features

- Package includes scale with IP67 aluminum environmentally sealed load cell with an indicator and 12-inch column
- Factory calibrated with indicator setup and configured for 5,000 divisions
- Scale includes rubber feet to provide exceptional traction and avoid scratching surfaces along with removable top cover for ease of cleaning
- AC power 100 to 240 VAC
- Numeric keypad (480 Plus)
- Battery backed time and date
- Standard RS-232 serial ports for connecting to a variety of peripherals

## CW-90B Specifications

### Load Cell, NTEP Certified:

IP67 aluminum, environmentally sealed

### Scale Construction:

304 stainless steel

### Maximum Overload:

180% to 200% depending on capacity

### Overload Protection:

Five-point, independently adjusted

### Scale Frame:

AISI304L, straight line finish, Ra= 45 +/- 10

### Scale Cover:

AISI304L, straight line finish, Ra= 45 +/- 10

### Cable Length:

34 in

### Compensated Temperature Range:

14 °F to 104 °F (-10 °C to 40 °C)

### Approvals:

NTEP 12-123, Class III 5,000 d  
Measurement Canada AM-5892C  
CE  
cULus

### Warranty:

Two-year limited

## 480/480 Plus Specifications

### Communication Ports:

Com 1: RS-232 full duplex  
Com 2: RS-232 full duplex or 20 mA simplex, continuous  
Both ports 1200, 2400, 4800, 9600, 19200, 38400 baud seven or eight data bits, even, odd or no parity

### Display:

LED display 0.8 in (20 mm), six-digit, seven-segment

### Status Annunciators:

Gross, net, center of zero, standstill, lb, kg, tare, preset tare

### Keys/Buttons:

Flat membrane panel, embossed keys, tactile feel

### Rating/Material:

Enclosure: NEMA Type 4X/IP66, heavy-gauge stainless steel

### Approvals:

NTEP 12-123  
Measurement Canada AM-5892C  
CE Marked  
UL/cUL Listed

### Warranty:

Two-year limited

# Ready-n-Weigh Bench Scale System

CW-90B Bench Scale and 480/480 Plus Indicator Package

BENCH SCALES

## CW-90B with 480 Package

Part #	Platform Capacity	Dimensions (L × W × H)	Est. Weight	Price
<b>115 VAC, LED, US Plug-Type B</b>				
<b>201157</b>	5 lb (2.5 kg)	10 × 10 × 4.25 in	24 lb	\$1,650.00
<b>201158</b>	10 lb (5 kg)	10 × 10 × 4.25 in	24 lb	\$1,650.00
<b>201159</b>	25 lb (10 kg)	10 × 10 × 4.25 in	24 lb	\$1,650.00
<b>201160</b>	25 lb (10 kg)	12 × 12 × 4.25 in	27 lb	\$1,740.00
<b>201161</b>	50 lb (25 kg)	12 × 12 × 4.25 in	27 lb	\$1,740.00
<b>201162</b>	100 lb (50 kg)	12 × 12 × 4.25 in	27 lb	\$1,740.00
<b>90-264 VAC, LED, Euro Plug-Type E</b>				
<b>201169</b>	5 lb (2.5 kg)	10 × 10 × 4.25 in	24 lb	\$1,650.00
<b>201170</b>	10 lb (5 kg)	10 × 10 × 4.25 in	24 lb	\$1,650.00
<b>201171</b>	25 lb (10 kg)	10 × 10 × 4.25 in	24 lb	\$1,650.00
<b>201172</b>	25 lb (10 kg)	12 × 12 × 4.25 in	27 lb	\$1,740.00
<b>201173</b>	50 lb (25 kg)	12 × 12 × 4.25 in	27 lb	\$1,740.00
<b>201174</b>	100 lb (50 kg)	12 × 12 × 4.25 in	27 lb	\$1,740.00

## CW-90B with 480 Plus Package

Part #	Platform Capacity	Dimensions (L × W × H)	Est. Weight	Price
<b>115 VAC, LED, Numeric keypad, US Plug-Type B</b>				
<b>201163</b>	5 lb (2.5 kg)	10 × 10 × 4.25 in	24 lb	\$1,650.00
<b>201164</b>	10 lb (5 kg)	10 × 10 × 4.25 in	24 lb	\$1,650.00
<b>201165</b>	25 lb (10 kg)	10 × 10 × 4.25 in	24 lb	\$1,650.00
<b>201166</b>	25 lb (10 kg)	12 × 12 × 4.25 in	27 lb	\$1,740.00
<b>201167</b>	50 lb (25 kg)	12 × 12 × 4.25 in	27 lb	\$1,740.00
<b>201168</b>	100 lb (50 kg)	12 × 12 × 4.25 in	27 lb	\$1,740.00
<b>90-264 VAC, LED, Numeric keypad, Euro Plug-Type E</b>				
<b>201175</b>	5 lb (2.5 kg)	10 × 10 × 4.25 in	24 lb	\$1,650.00
<b>201176</b>	10 lb (5 kg)	10 × 10 × 4.25 in	24 lb	\$1,650.00
<b>201177</b>	25 lb (10 kg)	10 × 10 × 4.25 in	24 lb	\$1,650.00
<b>201178</b>	25 lb (10 kg)	12 × 12 × 4.25 in	27 lb	\$1,740.00
<b>201179</b>	50 lb (25 kg)	12 × 12 × 4.25 in	27 lb	\$1,740.00
<b>201180</b>	100 lb (50 kg)	12 × 12 × 4.25 in	27 lb	\$1,740.00



† US plug (NA) - Type B



†† Euro Plug - Type E

# Ready-n-Weigh Bench Scale System

CW-90B Bench Scale and 482/482 Plus Indicator Package

BENCH SCALES



Scale  
and  
Indicator  
Package

## Approvals



Measurement  
Canada  
Approved



## Dimensions

### CW-90B Bench Scale and 482/482 Plus Indicator

#### 10 × 10 in

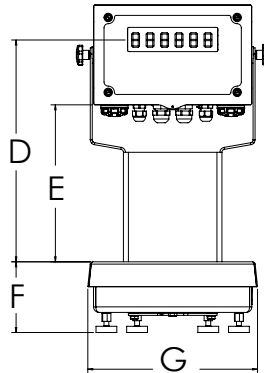
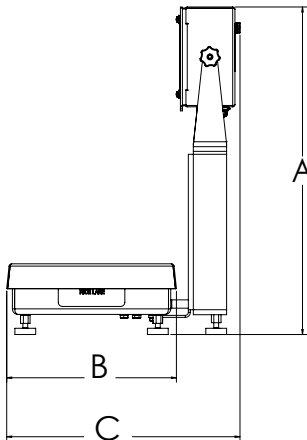
A	19.50 in	E	9.25 in
B	10.25 in	F	4.25 in
C	14.53 in	G	10.25 in
D	13.25 in		

Note: 1 in = 25.4 mm

#### 12 × 12 in

A	19.50 in	E	9.25 in
B	12.25 in	F	4.25 in
C	16.53 in	G	12.25 in
D	13.25 in		

Note: 1 in = 25.4 mm



CW-90B with 482 indicator

## Standard Features

- Package includes scale with IP67 aluminum environmentally sealed load cell with an indicator and 12-inch column
- Factory calibrated with indicator setup and configured for 5,000 divisions
- Scale includes rubber feet to provide exceptional traction and avoid scratching surfaces along with removable top cover for ease of cleaning
- AC power 100 to 240 VAC
- LCD backlit indicator display for a variety of environments
- Battery backed time and date
- Standard RS-232 serial ports for connecting to a variety of peripherals

## CW-90B Specifications

### Load Cell, NTEP Certified:

IP67 aluminum, environmentally sealed

### Scale Construction:

304 stainless steel

### Maximum Overload:

180% to 200% depending on capacity

### Overload Protection:

Five-point, independently adjusted

### Scale Frame:

AISI304L, straight line finish, Ra= 45 +/- 10

### Scale Cover:

AISI304L, straight line finish, Ra= 45 +/- 10

### Cable Length:

34 in

### Compensated Temperature Range:

14 °F to 104 °F (-10 °C to 40 °C)

### Approvals:

NTEP 12-123, Class III 5,000 d

Measurement Canada AM-5892C

CE

cULus

### Warranty:

Two-year limited

## 482/482 Plus Specifications

### Communication Ports:

Com 1: RS-232 full duplex

Com 2: RS-232 full duplex or 20 mA simplex, continuous

Both ports 1200, 2400, 4800, 9600, 19200, 38400 baud seven or eight data bits, even, odd or no parity

### Display:

LCD backlit display, transmissive/transflective 0.8 in (20 mm), six-digit, seven-segment

### Status Annunciators:

Gross, net, center of zero, standstill, lb, kg, tare, preset tare

### Keys/Buttons:

Flat membrane panel, embossed keys, tactile feel

### Rating/Material:

Enclosure: NEMA Type 4X/IP66, heavy-gauge stainless steel

### Approvals:

NTEP 12-123

Measurement Canada AM-5892C

CE Marked

cULus Listed

### Warranty:

Two-year limited

# Ready-n-Weigh Bench Scale System

CW-90B Bench Scale and 482/482 Plus Indicator Package

BENCH SCALES

## CW-90B with 482 Package

Part #	Platform Capacity	Dimensions (L × W × H)	Est. Weight	Price
<b>115 VAC, LCD, US Plug-Type B</b>				
201463	5 lb (2.5 kg)	10 × 10 × 4.25 in	24 lb	\$1,780.00
201464	10 lb (5 kg)	10 × 10 × 4.25 in	24 lb	\$1,780.00
201465	25 lb (10 kg)	10 × 10 × 4.25 in	24 lb	\$1,780.00
201466	25 lb (10 kg)	12 × 12 × 4.25 in	27 lb	\$1,870.00
201467	50 lb (25 kg)	12 × 12 × 4.25 in	27 lb	\$1,870.00
201468	100 lb (50 kg)	12 × 12 × 4.25 in	27 lb	\$1,870.00
<b>90-264 VAC, LCD, Euro Plug-Type E</b>				
201480	5 lb (2.5 kg)	10 × 10 × 4.25 in	24 lb	\$1,780.00
201485	10 lb (5 kg)	10 × 10 × 4.25 in	24 lb	\$1,780.00
201486	25 lb (10 kg)	10 × 10 × 4.25 in	24 lb	\$1,780.00
201487	25 lb (10 kg)	12 × 12 × 4.25 in	27 lb	\$1,870.00
201488	50 lb (25 kg)	12 × 12 × 4.25 in	27 lb	\$1,870.00
201489	100 lb (50 kg)	12 × 12 × 4.25 in	27 lb	\$1,870.00

## CW-90B with 482 Package

Part #	Platform Capacity	Dimensions (L × W × H)	Est. Weight	Price
<b>115 VAC, LCD, Numeric keypad, US Plug-Type B</b>				
201469	5 lb (2.5 kg)	10 × 10 × 4.25 in	24 lb	\$1,780.00
201475	10 lb (5 kg)	10 × 10 × 4.25 in	24 lb	\$1,780.00
201476	25 lb (10 kg)	10 × 10 × 4.25 in	24 lb	\$1,780.00
201477	25 lb (10 kg)	12 × 12 × 4.25 in	27 lb	\$1,870.00
201478	50 lb (25 kg)	12 × 12 × 4.25 in	27 lb	\$1,870.00
201479	100 lb (50 kg)	12 × 12 × 4.25 in	27 lb	\$1,870.00
<b>90-264 VAC, LCD, Numeric keypad, Euro Plug-Type E</b>				
201490	5 lb (2.5 kg)	10 × 10 × 4.25 in	24 lb	\$1,780.00
201491	10 lb (5 kg)	10 × 10 × 4.25 in	24 lb	\$1,780.00
201492	25 lb (10 kg)	10 × 10 × 4.25 in	24 lb	\$1,780.00
201493	25 lb (10 kg)	12 × 12 × 4.25 in	27 lb	\$1,870.00
201494	50 lb (25 kg)	12 × 12 × 4.25 in	27 lb	\$1,870.00
201495	100 lb (50 kg)	12 × 12 × 4.25 in	27 lb	\$1,870.00



<sup>†</sup> US plug (NA) - Type B



<sup>\*\*</sup> Euro Plug - Type E



# Ready-n-Weigh Bench Scale System

CW-90B Bench Scale and 680 Indicator Package

BENCH SCALES



Scale and Indicator Package

## Approvals



Measurement  
Canada  
Approved



## CW-90B with 680 Package

Part #	Platform Capacity	Dimensions (L × W × H)	Est. Weight	Price
<b>115-230 VAC, LED, Numeric, US Plug-Type B</b>				
201308	5 lb (2.5 kg)	10 × 10 × 4.25 in	24 lb	\$1,710.00
201309	10 lb (5 kg)	10 × 10 × 4.25 in	24 lb	\$1,710.00
201310	25 lb (10 kg)	10 × 10 × 4.25 in	24 lb	\$1,710.00
201311	25 lb (10 kg)	12 × 12 × 4.25 in	27 lb	\$1,800.00
201312	50 lb (25 kg)	12 × 12 × 4.25 in	27 lb	\$1,800.00
201313	100 lb (50 kg)	12 × 12 × 4.25 in	27 lb	\$1,800.00
<b>115-230 VAC, LED, Numeric, Euro Plug-Type E</b>				
201314	5 lb (2.5 kg)	10 × 10 × 4.25 in	24 lb	\$1,710.00
201315	10 lb (5 kg)	10 × 10 × 4.25 in	24 lb	\$1,710.00
201319	25 lb (10 kg)	10 × 10 × 4.25 in	24 lb	\$1,710.00
201320	25 lb (10 kg)	12 × 12 × 4.25 in	27 lb	\$1,800.00
201321	50 lb (25 kg)	12 × 12 × 4.25 in	27 lb	\$1,800.00
201322	100 lb (50 kg)	12 × 12 × 4.25 in	27 lb	\$1,800.00



\* US plug (NA) - Type B

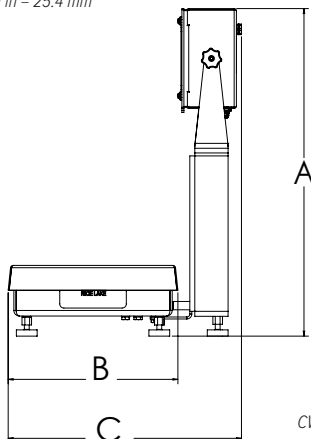


\*\* Euro Plug - Type E

## Dimensions

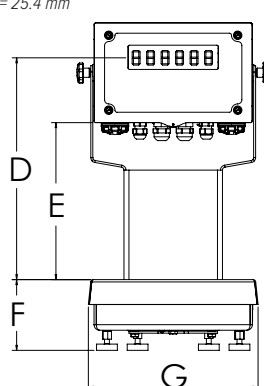
CW-90B Bench Scale and 680 Indicator			
10 × 10 in			
A	19.56 in	E	9.31 in
B	10.25 in	F	4.25 in
C	15.83 in	G	10.25 in
D	13.31 in		

Note: 1 in = 25.4 mm



12 × 12 in			
A	19.56 in	E	9.31 in
B	12.25 in	F	4.25 in
C	16.83 in	G	12.25 in
D	13.31 in		

Note: 1 in = 25.4 mm



CW-90B with 680 indicator

## Standard Features

- Package includes scale with IP67 aluminum environmentally sealed load cell with an indicator and 12-inch column
- Factory calibrated with indicator setup and configured for 5,000 divisions
- Scale includes rubber feet to provide exceptional traction and avoid scratching surfaces along with removable top cover for ease of cleaning
- AC power 100 to 240 VAC
- LCD backlit indicator display for a variety of environments
- Battery backed time and date
- Standard RS-232 serial ports for connecting to a variety of peripherals
- Ethernet TCP/IP comes standard

## CW-90B Specifications

### Load Cell, NTEP Certified:

IP67 aluminum and environmentally sealed

### Scale Construction:

304 stainless steel

### Maximum Overload:

180% to 200% depending on capacity

### Overload Protection:

Five-point, independently adjusted

### Scale Frame:

AISI304L, straight line finish, Ra= 45 +/- 10

### Scale Cover:

AISI304L, straight line finish, Ra= 45 +/- 10

### Cable Length:

34 in

### Compensated Temperature Range:

14 °F to 104 °F (-10 °C to 40 °C)

### Approvals:

NTEP 95-072, Class III 5,000 d

Measurement Canada AM-5082

CE

cULus

### Warranty:

Two-year limited

## 680 Specifications

### Communication Ports:

Two RS-232 (three-wire)

RS-485/422 (two-wire or four-wire)

Micro USB (device)

Ethernet TCP/IP (10/100)

### Display:

Seven 0.8-inch tall, seven-segment digits

### Status Annunciators:

Eight LED annunciators

### Keys/Buttons:

Flat membrane panel, tactile feel

(18 buttons plus ON/OFF)

### Rating/Material:

Rating: IP69K (IP66 with RJ45)

Material: AISI 304 Stainless Steel

### Approvals:

NTEP 19-021

Measurement Canada AM-6121C

cULus Listed

CE Marked

### Warranty:

Two-year limited

# Ready-n-Weigh Bench Scale System

CW-90XB Bench Scale and 380 Indicator Package

BENCH SCALES



## Approvals



Measurement  
Canada  
Approved



## CW-90XB with 380 Package

Part #	Capacity	Dimensions (L x W x H)	Est. Weight	Price
208543	5 lb (2.5 kg)	10 x 10 x 4.25 in	24 lb	\$1,952.00
208544	10 lb (5 kg)	10 x 10 x 4.25 in	24 lb	\$1,952.00
208545	25 lb (10 kg)	10 x 10 x 4.25 in	24 lb	\$1,952.00
208546	25 lb (10 kg)	12 x 12 x 4.25 in	27 lb	\$2,042.00
208547	50 lb (25 kg)	12 x 12 x 4.25 in	27 lb	\$2,042.00
208548	100 lb (50 kg)	12 x 12 x 4.25 in	27 lb	\$2,042.00

## Options/Accessories

Part #	Description	Price
206433†	External AC adapter	\$54.00
204258	Real-time clock module	\$127.00



† US plug (NA) - Type A

## Dimensions

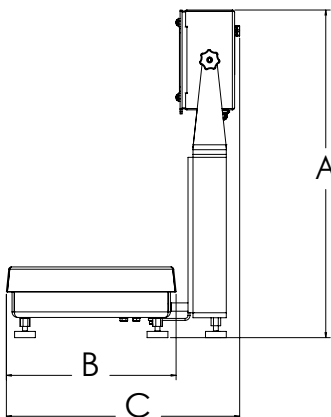
### CW-90XB Bench Scale and 380 Indicator

10 x 10 in			
A	19.69 in	E	9.44 in
B	10.20 in	F	4.25 in
C	14.02 in	G	10.20 in
D	13.36 in		

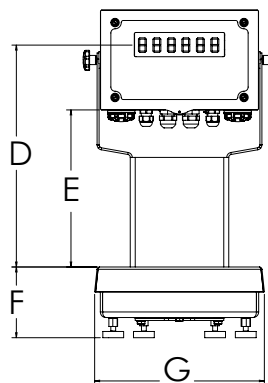
Note: 1 in = 25.4 mm

12 x 12 in			
A	19.56 in	E	9.31 in
B	12.29 in	F	4.25 in
C	16.07 in	G	12.29 in
D	13.23 in		

Note: 1 in = 25.4 mm



CW-90XB with 380 indicator



## Standard Features

- Package includes scale with IP69K stainless steel hermetically sealed load cell with an indicator and 12-inch column
- Factory calibrated with indicator setup and configured for 5,000 divisions
- Scale includes rubber feet to provide exceptional traction and avoid scratching surfaces along with a removable top cover for ease of cleaning
- Powered by four alkaline C-cell batteries (not included) or external AC adapter (not included)
- Standard RS-232 serial port for connecting to a variety of peripherals

## CW-90XB Specifications

### Load Cell, NTEP Certified:

IP69K stainless steel and hermetically sealed

### Scale Construction:

304 stainless steel

### Maximum Overload:

180% to 200% depending on capacity

### Overload Protection:

Five-point, independently adjusted

### Scale Frame:

AISI304L, straight line finish, Ra= 45 +/- 10

### Scale Cover:

AISI304L, straight line finish, Ra= 45 +/- 10

### Cable Length:

34 in

### Compensated Temperature Range:

14 °F to 104 °F (-10 °C to 40 °C)

### Approvals:

NTEP 95-072, Class III 5,000 d

Measurement Canada AM-5082

Load cell is FM approved

### Warranty:

Three-year limited (includes water ingress)

## 380 Specifications

### Power:

Batteries: Four alkaline C-cell

Optional: 115/230 VAC to 12 VDC adapter

### Battery Life:

100 hours on alkaline batteries with one 350 ohm load cell, no backlight

### Communication Ports:

One RS-232 (three-wire)

One USB 2.0

### Display:

Six 1-inch tall, LCD digits

### Status Annunciators:

g, lb, t, tn, kg, oz, battery level, PT, LT, gross, zero, unstable, net

### Keys/Buttons:

5 tactile buttons

### Rating/Material:

Enclosure: IP66, 304 Stainless steel

### Approvals:

NTEP 21-051

Measurement Canada AM-6184

CE Marked

cULus Listed

### Warranty:

Two-year limited

# Ready-n-Weigh Bench Scale System

CW-90XB Bench Scale and 480/480 Plus Indicator Package

BENCH SCALES



Scale  
and  
Indicator  
Package

## Standard Features

- Package includes scale with IP69K stainless steel hermetically sealed load cell with an indicator and 12-inch column
- Factory calibrated with indicator setup and configured for 5,000 divisions
- Scale includes rubber feet to provide exceptional traction and avoid scratching surfaces along with removable top cover for ease of cleaning
- AC power 100 to 240 VAC
- Numeric keypad (480 plus)
- Battery backed time and date
- Standard RS-232 serial ports for connecting to peripherals

## CW-90XB Specifications

### Load Cell, NTEP Certified:

IP69K stainless steel and hermetically sealed

### Scale Construction:

304 stainless steel

### Maximum Overload:

180% to 200% depending on capacity

### Overload Protection:

Five-point, independently adjusted

### Scale Frame:

AISI304L, straight line finish, Ra= 45 +/- 10

### Scale Cover:

AISI304L, straight line finish, Ra= 45 +/- 10

### Cable Length:

34 in

### Compensated Temperature Range:

14 °F to 104 °F (-10 °C to 40 °C)

### CW-90XB Approvals:

NTEP CC 95-072, Class III 5,000 d

Measurement Canada AM-5082

Load cell is FM approved

### Warranty:

Three-year limited (includes water ingress)

## 480/480 Plus Specifications

### Communication Ports:

Com 1: RS-232 full duplex

Com 2: RS-232 full duplex or 20 mA simplex, continuous

Both ports 1200, 2400, 4800, 9600, 19200, 38400 baud seven or eight data bits, even, odd or no parity

### Display:

LED display 0.8 in (20 mm), six-digit, seven-segment

### Status Annunciators:

Gross, net, center of zero, standstill, lb, kg, tare, preset tare

### Keys/Buttons:

Flat membrane panel, embossed keys, tactile feel

### Rating/Material:

Enclosure: NEMA Type 4X/IP66, heavy-gauge stainless steel

### Approvals:

NTEP 12-123

Measurement Canada AM-5892C

CE Marked

cULus Listed

### Warranty:

Two-year limited

## Approvals



Measurement  
Canada  
Approved



## Dimensions

### CW-90XB Bench Scale and 480/480 Plus Indicator

#### 10 × 10 in

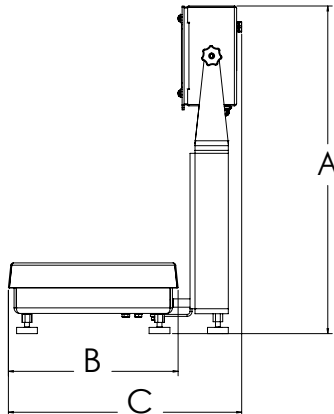
A	19.50 in	E	9.25 in
B	10.25 in	F	4.25 in
C	14.53 in	G	10.25 in
D	13.25 in		

Note: 1 in = 25.4 mm

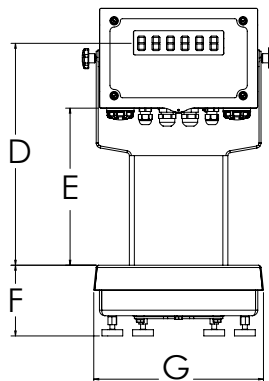
#### 12 × 12 in

A	19.50 in	E	9.25 in
B	12.25 in	F	4.25 in
C	16.53 in	G	12.25 in
D	13.25 in		

Note: 1 in = 25.4 mm



CW-90XB with 480 indicator



# Ready-n-Weigh Bench Scale System

CW-90XB Bench Scale and 480/480 Plus Indicator Package

BENCH SCALES

## CW-90XB with 480 Package

Part #	Platform Capacity	Dimensions (L × W × H)	Est. Weight	Price
<b>115 VAC, LED, US Plug-Type B</b>				
201241	5 lb (2.5 kg)	10 × 10 × 4.25 in	24 lb	\$2,212.00
201242	10 lb (5 kg)	10 × 10 × 4.25 in	24 lb	\$2,212.00
201243	25 lb (10 kg)	10 × 10 × 4.25 in	24 lb	\$2,212.00
201244	25 lb (10 kg)	12 × 12 × 4.25 in	27 lb	\$2,302.00
201245	50 lb (25 kg)	12 × 12 × 4.25 in	27 lb	\$2,302.00
201246	100 lb (50 kg)	12 × 12 × 4.25 in	27 lb	\$2,302.00
<b>90-264 VAC, LED, Euro Plug-Type E</b>				
201254	5 lb (2.5 kg)	10 × 10 × 4.25 in	24 lb	\$2,212.00
201255	10 lb (5 kg)	10 × 10 × 4.25 in	24 lb	\$2,212.00
201257	25 lb (10 kg)	10 × 10 × 4.25 in	24 lb	\$2,212.00
201258	25 lb (10 kg)	12 × 12 × 4.25 in	27 lb	\$2,302.00
201259	50 lb (25 kg)	12 × 12 × 4.25 in	27 lb	\$2,302.00
201260	100 lb (50 kg)	12 × 12 × 4.25 in	27 lb	\$2,302.00

## CW-90XB with 480 Plus Package

Part #	Platform Capacity	Dimensions (L × W × H)	Est. Weight	Price
<b>115 VAC, LED, Numeric, US Plug-Type B</b>				
201247	5 lb (2.5 kg)	10 × 10 × 4.25 in	24 lb	\$2,212.00
201248	10 lb (5 kg)	10 × 10 × 4.25 in	24 lb	\$2,212.00
201249	25 lb (10 kg)	10 × 10 × 4.25 in	24 lb	\$2,212.00
201250	25 lb (10 kg)	12 × 12 × 4.25 in	27 lb	\$2,302.00
201251	50 lb (25 kg)	12 × 12 × 4.25 in	27 lb	\$2,302.00
201253	100 lb (50 kg)	12 × 12 × 4.25 in	27 lb	\$2,302.00
<b>90-264 VAC, LED, Numeric, Euro Plug-Type E</b>				
201261	5 lb (2.5 kg)	10 × 10 × 4.25 in	24 lb	\$2,212.00
201262	10 lb (5 kg)	10 × 10 × 4.25 in	24 lb	\$2,212.00
201263	25 lb (10 kg)	10 × 10 × 4.25 in	24 lb	\$2,212.00
201264	25 lb (10 kg)	12 × 12 × 4.25 in	27 lb	\$2,302.00
201265	50 lb (25 kg)	12 × 12 × 4.25 in	27 lb	\$2,302.00
201266	100 lb (50 kg)	12 × 12 × 4.25 in	27 lb	\$2,302.00



\* US plug (NA) - Type B



\*\* Euro Plug - Type E

# Ready-n-Weigh Bench Scale System

CW-90XB Bench Scale and 482/482 Plus Indicator Package

BENCH SCALES



Scale  
and  
Indicator  
Package

## Approvals



Measurement  
Canada  
Approved



## Standard Features

- Package includes scale with IP69K stainless steel hermetically sealed load cell with an indicator and 12-inch
- Factory calibrated with indicator setup and configured for 5,000 divisions
- Scale includes rubber feet to provide exceptional traction and avoid scratching surfaces along with removable top cover for ease of cleaning
- AC power 100 to 240 VAC
- LCD backlit display suitable for a variety of environments
- Battery backed time and date
- Standard RS-232 serial ports for connecting to a variety of peripherals

## Dimensions

### CW-90XB Bench Scale and 482/482 Plus Indicator

#### 10 × 10 in

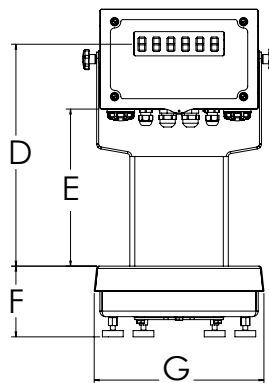
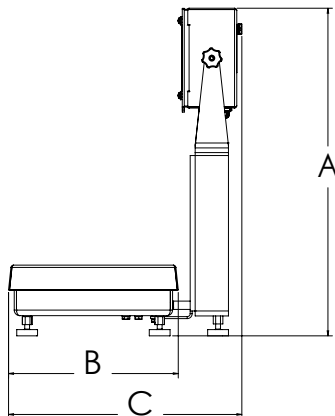
A	19.50 in	E	9.25 in
B	10.25 in	F	4.25 in
C	14.53 in	G	10.25 in
D	13.25 in		

Note: 1 in = 25.4 mm

#### 12 × 12 in

A	19.50 in	E	9.25 in
B	12.25 in	F	4.25 in
C	16.53 in	G	12.25 in
D	13.25 in		

Note: 1 in = 25.4 mm



CW-90XB with 482 indicator

## Specifications

### Load Cell, NTEP Certified:

IP69K stainless steel and hermetically sealed

### Scale Construction:

304 stainless steel

### Maximum Overload:

180% to 200% depending on capacity

### Overload Protection:

Five-point, independently adjusted

### Scale Frame:

AISI304L, straight line finish, Ra= 45 +/- 10

### Scale Cover:

AISI304L, straight line finish, Ra= 45 +/- 10

### Cable Length:

34 in

### Compensated Temperature Range:

14 °F to 104 °F (-10 °C to 40 °C)

### Approvals:

NTEP CC 95-072, Class III 5,000 d

Measurement Canada AM-5082

Load cell is FM approved

### Warranty:

Three-year limited (includes water ingress)

## 482/482 Plus Specifications

### Communication Ports:

Com 1: RS-232 full duplex

Com 2: RS-232 full duplex or 20 mA simplex, continuous

Both ports 1200, 2400, 4800, 9600, 19200, 38400 baud seven or eight data bits, even, odd or no parity

### Display:

LCD backlit display, transmissive/transflective 0.8 in (20 mm), six-digit, seven-segment

### Status Annunciators:

Gross, net, center of zero, standstill, lb, kg, tare, preset tare

### Keys/Buttons:

Flat membrane panel, embossed keys, tactile feel

### Rating/Material:

Enclosure: NEMA Type 4X/IP66, heavy-gauge stainless steel

### Approvals:

NTEP 12-123

Measurement Canada AM-5892C

CE Marked

cULus Listed

### Warranty:

Two-year limited

# Ready-n-Weigh Bench Scale System

CW-90XB Bench Scale and 482/482 Plus Indicator Package

BENCH SCALES

## CW-90XB with 482 Package

Part #	Platform Capacity	Dimensions (L × W × H)	Est. Weight	Price
<b>115 VAC, LCD, US Plug-Type B</b>				
201533	5 lb (2.5 kg)	10 × 10 × 4.25 in	24 lb	\$2,342.00
201534	10 lb (5 kg)	10 × 10 × 4.25 in	24 lb	\$2,342.00
201535	25 lb (10 kg)	10 × 10 × 4.25 in	24 lb	\$2,342.00
201536	25 lb (10 kg)	12 × 12 × 4.25 in	27 lb	\$2,432.00
201537	50 lb (25 kg)	12 × 12 × 4.25 in	27 lb	\$2,432.00
201538	100 lb (50 kg)	12 × 12 × 4.25 in	27 lb	\$2,432.00
<b>90-264 VAC, LCD, Euro Plug-Type E</b>				
201546	5 lb (2.5 kg)	10 × 10 × 4.25 in	24 lb	\$2,342.00
201547	10 lb (5 kg)	10 × 10 × 4.25 in	24 lb	\$2,342.00
201548	25 lb (10 kg)	10 × 10 × 4.25 in	24 lb	\$2,342.00
201549	25 lb (10 kg)	12 × 12 × 4.25 in	27 lb	\$2,432.00
201550	50 lb (25 kg)	12 × 12 × 4.25 in	27 lb	\$2,432.00
201551	100 lb (50 kg)	12 × 12 × 4.25 in	27 lb	\$2,432.00

## CW-90XB with 482 Plus Package

Part #	Platform Capacity	Dimensions (L × W × H)	Est. Weight	Price
<b>115 VAC, LCD, Numeric, US Plug-Type B</b>				
201539	5 lb (2.5 kg)	10 × 10 × 4.25 in	24 lb	\$2,342.00
201541	10 lb (5 kg)	10 × 10 × 4.25 in	24 lb	\$2,342.00
201542	25 lb (10 kg)	10 × 10 × 4.25 in	24 lb	\$2,342.00
201543	25 lb (10 kg)	12 × 12 × 4.25 in	27 lb	\$2,432.00
201544	50 lb (25 kg)	12 × 12 × 4.25 in	27 lb	\$2,432.00
201545	100 lb (50 kg)	12 × 12 × 4.25 in	27 lb	\$2,432.00
<b>90-264 VAC, LCD, Numeric, Euro Plug-Type E</b>				
201552	5 lb (2.5 kg)	10 × 10 × 4.25 in	24 lb	\$2,342.00
201553	10 lb (5 kg)	10 × 10 × 4.25 in	24 lb	\$2,342.00
201554	25 lb (10 kg)	10 × 10 × 4.25 in	24 lb	\$2,342.00
201555	25 lb (10 kg)	12 × 12 × 4.25 in	27 lb	\$2,432.00
201556	50 lb (25 kg)	12 × 12 × 4.25 in	27 lb	\$2,432.00
201557	100 lb (50 kg)	12 × 12 × 4.25 in	27 lb	\$2,432.00



\* US plug (NA) - Type B



\*\* Euro Plug - Type E



# Ready-n-Weigh Bench Scale System

CW-90XB Bench Scale and 680 Indicator Package

BENCH SCALES



## Approvals



Measurement  
Canada  
Approved



## CW-90XB with 680 Package

Part #	Platform Capacity	Dimensions (L x W x H)	Est. Weight	Price
<b>115-230 VAC, LED, Numeric, US Plug-Type B</b>				
201409	5 lb (2.5 kg)	10 x 10 x 4.25 in	24 lb	\$2,272.00
201410	10 lb (5 kg)	10 x 10 x 4.25 in	24 lb	\$2,272.00
201411	25 lb (10 kg)	10 x 10 x 4.25 in	24 lb	\$2,272.00
201412	25 lb (10 kg)	12 x 12 x 4.25 in	27 lb	\$2,362.00
201413	50 lb (25 kg)	12 x 12 x 4.25 in	27 lb	\$2,362.00
201414	100 lb (50 kg)	12 x 12 x 4.25 in	27 lb	\$2,362.00
<b>115-230 VAC, LED, Numeric, Euro Plug-Type E</b>				
201415	5 lb (2.5 kg)	10 x 10 x 4.25 in	24 lb	\$2,272.00
201416	10 lb (5 kg)	10 x 10 x 4.25 in	24 lb	\$2,272.00
201417	25 lb (10 kg)	10 x 10 x 4.25 in	24 lb	\$2,272.00
201418	25 lb (10 kg)	12 x 12 x 4.25 in	27 lb	\$2,362.00
201419	50 lb (25 kg)	12 x 12 x 4.25 in	27 lb	\$2,362.00
201420	100 lb (50 kg)	12 x 12 x 4.25 in	27 lb	\$2,362.00



† US plug (NA) - Type B

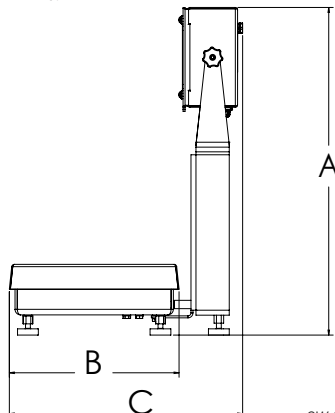


†† Euro Plug - Type E

## Dimensions

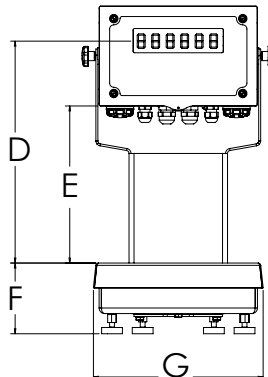
CW-90XB Bench Scale and 680 Indicator			
10 x 10 in			
A	19.56 in	E	9.31 in
B	10.25 in	F	4.25 in
C	15.83 in	G	10.25 in
D	13.31 in		

Note: 1 in = 25.4 mm



12 x 12 in			
A	19.56 in	E	9.31 in
B	12.25 in	F	4.25 in
C	16.83 in	G	12.25 in
D	13.31 in		

Note: 1 in = 25.4 mm



CW-90XB with 680 indicator

## Standard Features

- Package includes scale with IP69K stainless steel hermetically sealed load cell with an indicator and 12-inch column
- Factory calibrated with indicator setup and configured for 5,000 divisions
- Scale includes rubber feet to provide exceptional traction and avoid scratching surfaces along with removable top cover for ease of cleaning
- AC power 100 to 240 VAC
- Full numeric keypad
- LED display suitable for a variety of environments
- Battery backed time and date
- Standard RS-232 serial ports for connecting to a variety of peripherals
- Ethernet TCP/IP

## CW-90XB Specifications

### Load Cell, NTEP Certified:

IP69K stainless steel and hermetically sealed

### Scale Construction:

304 stainless steel

### Maximum Overload:

180% to 200% depending on capacity

### Overload Protection:

Five-point, independently adjusted

### Scale Frame:

AISI304L, straight line finish, Ra= 45 +/- 10

### Scale Cover:

AISI304L, straight line finish, Ra= 45 +/- 10

### Cable Length:

34 in

### Compensated Temperature Range:

14 °F to 104 °F (-10 °C to 40 °C)

### Approvals:

NTEP CC 95-072, Class III 5,000 d

Measurement Canada AM-5082

Load cell is FM approved

### Warranty:

Three-year limited (includes water ingress)

## 680 Specifications

### Communication Ports:

Two RS-232 (three-wire)

RS-485/422 (two-wire or four-wire)

Micro USB (device)

Ethernet TCP/IP (10/100)

### Display:

Seven 0.8-inch tall, seven-segment digits

### Status Annunciators:

Eight LED annunciators

### Keys/Buttons:

Flat membrane panel, tactile feel

(18 buttons plus ON/OFF)

### Rating/Material:

Rating: IP69K (IP66 with RJ45)

Material: AISI 304 stainless steel

### Approvals:

NTEP 19-021

Measurement Canada AM-6121C

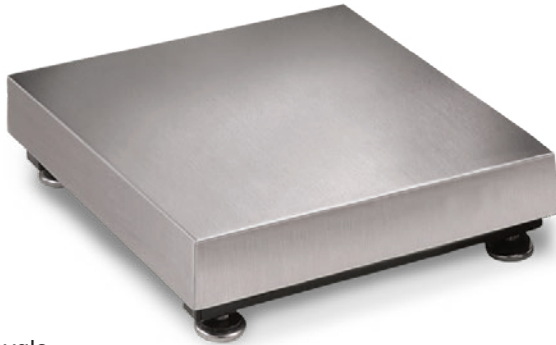
cULus Listed

CE Marked

### Warranty:

Two-year limited





## Approvals



Measurement  
Canada  
Approved



APPROVED  
† Load cell  
approval



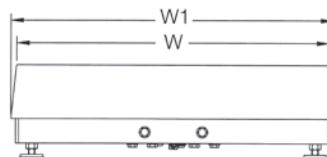
APPROVED  
†† Load cell  
approval

## Part Number/Price

Part #	Capacity	Platform Dimensions (L x W x H)	Est. Weight	Price
18580 †	30 lb (15 kg)	12 x 12 x 4.12 in	20 lb	\$890.00
18582 †	50 lb (25 kg)	12 x 12 x 4.12 in	20 lb	\$890.00
18584 †	100 lb (50 kg)	12 x 12 x 4.12 in	20 lb	\$890.00
18586 ††	50 lb (25 kg)	12 x 18 x 4.12 in	37 lb	\$980.00
18588 ††	100 lb (50 kg)	12 x 18 x 4.12 in	37 lb	\$980.00
18590 †	50 lb (25 kg)	18 x 18 x 5.25 in	68 lb	\$1,210.00
18592 †	100 lb (50 kg)	18 x 18 x 5.25 in	68 lb	\$1,210.00
18594 †	150 lb (75 kg)	18 x 18 x 5.25 in	68 lb	\$1,210.00
18596 †	200 lb (100 kg)	18 x 18 x 5.25 in	68 lb	\$1,210.00
18598 †	250 lb (125 kg)	18 x 18 x 5.25 in	68 lb	\$1,210.00
18600 †	300 lb (150 kg)	18 x 18 x 5.25 in	68 lb	\$1,210.00
18602 †	500 lb (250 kg)	18 x 18 x 5.25 in	68 lb	\$1,210.00
18604 ††	1,000 lb (500 kg)	18 x 18 x 5.25 in	68 lb	\$1,210.00
18606 †	50 lb (25 kg)	24 x 18 x 5.25 in	78 lb	\$1,335.00
18608 †	100 lb (50 kg)	24 x 18 x 5.25 in	78 lb	\$1,335.00
18610 †	150 lb (75 kg)	24 x 18 x 5.25 in	78 lb	\$1,335.00
18612 †	200 lb (100 kg)	24 x 18 x 5.25 in	78 lb	\$1,335.00
18614 †	250 lb (125 kg)	24 x 18 x 5.25 in	78 lb	\$1,335.00
18616 †	300 lb (150 kg)	24 x 18 x 5.25 in	78 lb	\$1,335.00
18618 †	500 lb (250 kg)	24 x 18 x 5.25 in	78 lb	\$1,335.00
18620 ††	1,000 lb (500 kg)	24 x 18 x 5.25 in	78 lb	\$1,335.00
18622 †	100 lb (50 kg)	24 x 24 x 5.25 in	78 lb	\$1,470.00
18624 †	150 lb (75 kg)	24 x 24 x 5.25 in	84 lb	\$1,470.00
18626 †	200 lb (100 kg)	24 x 24 x 5.25 in	84 lb	\$1,470.00
18628 †	250 lb (125 kg)	24 x 24 x 5.25 in	84 lb	\$1,470.00
18630 †	300 lb (150 kg)	24 x 24 x 5.25 in	84 lb	\$1,470.00
18632 †	500 lb (250 kg)	24 x 24 x 5.25 in	84 lb	\$1,470.00
18634 ††	1,000 lb (500 kg)	24 x 24 x 5.25 in	84 lb	\$1,470.00

## Options/Accessories

Part #	Description	Catalog Page #
Consult	Scale columns	See page 204
Consult	Ball transfer and roller conveyor scale tops	See page 203
Consult	Mobile scale carts	See page 199 to page 202



## Standard Features

- Painted mild steel frame with 304 stainless steel cover
- Base design isolates load cell from overloads and shock loads for added durability
- Specially designed adjustable support feet provide exceptional traction and will not scratch surfaces

## Specifications

### Load Cell, NTEP Certified:

IP66 aluminum, environmentally sealed

### Output Impedance:

350 ohm

### Maximum Overload:

150% to 200% depending on capacity

### Overload Protection:

Five-point, independently adjusted

### Scale Frame:

Mild steel powder coated black

### Scale Cover:

AISI304L, straight line finish, Ra= 45 +/- 10

### Cable Length:

10 ft (3 m)

### Compensated Temperature Range:

14 °F to 104 °F (-10 °C to 40 °C)

### Warranty:

Two-year limited

### Approvals:

NTEP 95-072, Class III, 5,000 d  
Measurement Canada AM-5082

## Dimensions

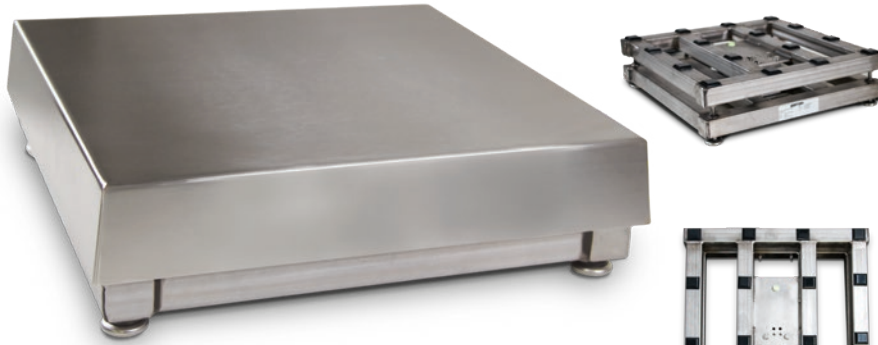
BenchMark MS			
12 x 12 in			
H	4.12 in	W	12.00 in
L	12.00 in	W1	12.50 in
L1	12.50 in		
12 x 18 in			
H	4.12 in	W	18.00 in
L	12.00 in	W1	18.50 in
L1	12.50 in		
18 x 18 in			
H	5.25 in	W	18.00 in
L	18.00 in	W1	18.75 in
L1	18.75 in		
24 x 18 in			
H	5.25 in	W	18.00 in
L	24.00 in	W1	18.75 in
L1	24.75 in		
24 x 24 in			
H	5.25 in	W	24.00 in
L	24.00 in	W1	24.75 in
L1	24.75 in		

Note: 1 in = 25.4 mm

# BenchMark® SS

Stainless Steel Bench Scale

BENCH SCALES



## Approvals



Measurement  
Canada  
Approved



APPROVED  
† Load cell  
approval



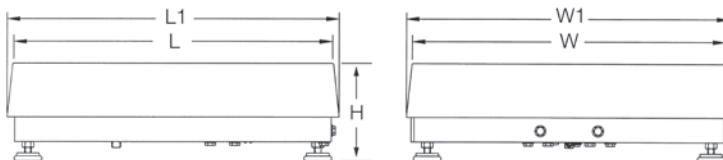
APPROVED  
†† Load cell  
approval

## Part Number/Price

Part #	Capacity	Platform Dimensions (L × W × H)	Est. Weight	Price
186222 †	50 lb (25 kg)	12 × 18 × 4.00 in	37 lb	\$1,040.00
186223 †	100 lb (50 kg)	12 × 18 × 4.00 in	37 lb	\$1,040.00
18591 †	50 lb (25 kg)	18 × 18 × 5.25 in	68 lb	\$1,440.00
18593 †	100 lb (50 kg)	18 × 18 × 5.25 in	68 lb	\$1,440.00
18595 †	150 lb (75 kg)	18 × 18 × 5.25 in	68 lb	\$1,440.00
18597 †	200 lb (100 kg)	18 × 18 × 5.25 in	68 lb	\$1,440.00
18599 †	250 lb (125 kg)	18 × 18 × 5.25 in	68 lb	\$1,440.00
18601 †	300 lb (150 kg)	18 × 18 × 5.25 in	68 lb	\$1,440.00
18603 †	500 lb (250 kg)	18 × 18 × 5.25 in	68 lb	\$1,440.00
18605 ††	1,000 lb (500 kg)	18 × 18 × 5.25 in	68 lb	\$1,440.00
18607 †	50 lb (25 kg)	24 × 18 × 5.25 in	78 lb	\$1,715.00
18609 †	100 lb (50 kg)	24 × 18 × 5.25 in	78 lb	\$1,715.00
18611 †	150 lb (75 kg)	24 × 18 × 5.25 in	78 lb	\$1,715.00
18613 †	200 lb (100 kg)	24 × 18 × 5.25 in	78 lb	\$1,715.00
18615 †	250 lb (125 kg)	24 × 18 × 5.25 in	78 lb	\$1,715.00
18617 †	300 lb (150 kg)	24 × 18 × 5.25 in	78 lb	\$1,715.00
18619 †	500 lb (250 kg)	24 × 18 × 5.25 in	78 lb	\$1,715.00
18621 ††	1,000 lb (500 kg)	24 × 18 × 5.25 in	78 lb	\$1,715.00
18623 †	100 lb (50 kg)	24 × 24 × 5.25 in	84 lb	\$2,110.00
18625 †	150 lb (75 kg)	24 × 24 × 5.25 in	84 lb	\$2,110.00
18627 †	200 lb (100 kg)	24 × 24 × 5.25 in	84 lb	\$2,110.00
18629 †	250 lb (125 kg)	24 × 24 × 5.25 in	84 lb	\$2,110.00
18631 †	300 lb (150 kg)	24 × 24 × 5.25 in	84 lb	\$2,110.00
18633 †	500 lb (250 kg)	24 × 24 × 5.25 in	84 lb	\$2,110.00
18635 ††	1,000 lb (500 kg)	24 × 24 × 5.25 in	84 lb	\$2,110.00

## Options/Accessories

Part #	Description	Catalog Page #
Consult	Scale columns	See page 204
Consult	Ball transfer and roller conveyor scale tops	See page 203
Consult	Mobile scale carts	See page 199 to page 202



## Standard Features

- 304 stainless steel frame and cover
- Base design isolates load cell from overloads and shock loads for added durability
- Specially designed adjustable support feet provide exceptional traction and will not scratch surfaces

## Specifications

### Load Cell, NTEP Certified:

IP66 aluminum, environmentally sealed

### Output Impedance:

350 ohm

### Maximum Overload:

150% to 200% depending on capacity

### Overload Protection:

Five-point, independently adjusted

### Scale Frame:

AISI304L, glass bead blasted for even appearance

### Scale Cover:

AISI304L, straight line finish, Ra= 45 +/- 10

### Cable Length:

10 ft (3 m)

### Compensated Temperature Range:

14 °F to 104 °F (-10 °C to 40 °C)

### Warranty:

Two-year limited

### Approvals:

NTEP CC 95-072, Class III, 5,000 d  
Measurement Canada AM-5082

## Dimensions

BenchMark SS			
12 × 18 in			
H	4.00 in	W	18.00 in
L	12.00 in	W1	18.50 in
L1	12.50 in		
18 × 18 in			
H	5.25 in	W	18.00 in
L	18.00 in	W1	18.75 in
L1	18.75 in		
18 × 24 in			
H	5.25 in	W	18.00 in
L	24.00 in	W1	18.75 in
L1	24.75 in		
24 × 24 in			
H	5.25 in	W	24.00 in
L	24.00 in	W1	24.75 in
L1	24.75 in		

Note: 1 in = 25.4 mm



## Approvals

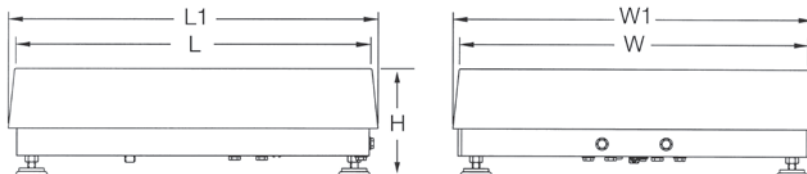


## Part Number/Price

Part #	Capacity	Platform Dimensions (L × W × H)	Est. Weight	Price
186897	50 lb (25 kg)	12 × 18 × 4.00 in	37 lb	\$1,480.00
186898	100 lb (50 kg)	12 × 18 × 4.00 in	37 lb	\$1,480.00
86952	50 lb (25 kg)	18 × 18 × 5.25 in	68 lb	\$1,780.00
86953	100 lb (50 kg)	18 × 18 × 5.25 in	68 lb	\$1,780.00
86954	150 lb (75 kg)	18 × 18 × 5.25 in	68 lb	\$1,780.00
86955	200 lb (100 kg)	18 × 18 × 5.25 in	68 lb	\$1,780.00
86956	250 lb (125 kg)	18 × 18 × 5.5 in	68 lb	\$2,130.00
86957	300 lb (150 kg)	18 × 18 × 5.5 in	68 lb	\$2,130.00
86958	500 lb (250 kg)	18 × 18 × 5.5 in	68 lb	\$2,130.00
86959	1,000 lb (500 kg)	18 × 18 × 5.5 in	68 lb	\$2,130.00
86960	50 lb (25 kg)	24 × 18 × 5.5 in	78 lb	\$2,405.00
86961	100 lb (50 kg)	24 × 18 × 5.5 in	78 lb	\$2,405.00
86962	150 lb (75 kg)	24 × 18 × 5.5 in	78 lb	\$2,405.00
86963	200 lb (100 kg)	24 × 18 × 5.5 in	78 lb	\$2,405.00
86964	250 lb (125 kg)	24 × 18 × 5.5 in	78 lb	\$2,405.00
86965	300 lb (150 kg)	24 × 18 × 5.5 in	78 lb	\$2,405.00
86966	500 lb (250 kg)	24 × 18 × 5.5 in	78 lb	\$2,405.00
86967	1,000 lb (500 kg)	24 × 18 × 5.5 in	78 lb	\$2,405.00
86968	100 lb (50 kg)	24 × 24 × 5.5 in	84 lb	\$2,800.00
86969	150 lb (75 kg)	24 × 24 × 5.5 in	84 lb	\$2,800.00
86970	200 lb (100 kg)	24 × 24 × 5.5 in	84 lb	\$2,800.00
86971	250 lb (125 kg)	24 × 24 × 5.5 in	84 lb	\$2,800.00
86972	300 lb (150 kg)	24 × 24 × 5.5 in	84 lb	\$2,800.00
86973	500 lb (250 kg)	24 × 24 × 5.5 in	84 lb	\$2,800.00
86974	1,000 lb (500 kg)	24 × 24 × 5.5 in	84 lb	\$2,800.00

## Options/Accessories

Part #	Description	Catalog Page #
Consult	Scale columns	See page 204
Consult	Ball transfer and roller conveyor scale tops	See page 203
Consult	Mobile scale carts	See page 199 to page 202



## Standard Features

- 304 stainless steel frame and cover
- Base design isolates load cell from overloads and shock loads for added durability
- Specially designed adjustable support feet provide exceptional traction and will not scratch surfaces

## Specifications

### Load Cell, NTEP Certified:

IP69K stainless steel, hermetically sealed

### Output Impedance:

1,000 ohm

### Maximum Overload:

150% to 200% depending on capacity

### Overload Protection:

Five-point, independently adjusted

### Scale Frame:

AISI304L, glass bead blasted for even appearance

### Scale Cover:

AISI304L, straight line finish, Ra= 45 +/- 10

### Cable Length:

10 ft (3 m)

### Compensated Temperature Range:

14 °F to 104 °F (-10 °C to 40 °C)

### Warranty:

Three-year limited  
(includes water ingress)

### Approvals:

NTEP CC 95-072, Class III, 5,000 d  
Measurement Canada AM-5082  
Load cell is FM approved

## Dimensions

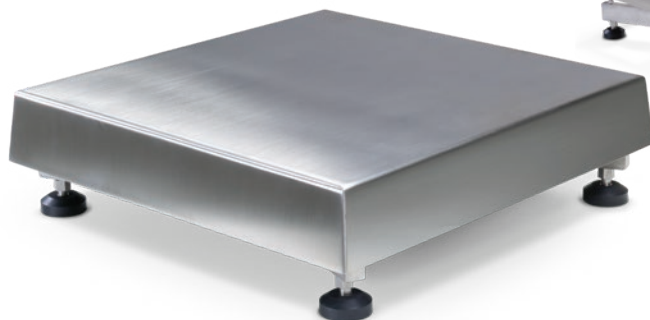
BenchMark HE			
12 × 18 in			
H	4.00 in	W	18.00 in
L	12.00 in	W1	18.50 in
L1	12.50 in		
18 × 18 × 5.25 in			
H	5.25 in	W	18.00 in
L	18.00 in	W1	18.75 in
L1	18.75 in		
18 × 18 × 5.5 in			
H	5.50 in	W	18.00 in
L	18.00 in	W1	18.75 in
L1	18.75 in		
18 × 24 in			
H	5.50 in	W	18.00 in
L	24.00 in	W1	18.75 in
L1	24.75 in		
24 × 24 in			
H	5.50 in	W	24.00 in
L	24.00 in	W1	24.75 in
L1	24.75 in		

Note: 1 in = 25.4 mm

# BenchMark® HE-X

Hostile Environment Extreme Bench Scale

BENCH SCALES



## Specifications

### Load Cell, NTEP Certified:

IP69K stainless steel, hermetically sealed

### Output Impedance:

1,000 ohm

### Maximum Overload:

150% to 200% depending on capacity

### Overload Protection:

Five-point, independently adjusted

### Scale Frame:

AISI304L, glass bead blasted for even appearance

### Scale Cover:

AISI304L, straight line finish, Ra= 45 +/- 10

### Cable Length:

10 ft (3 m)

### Compensated Temperature Range:

14 °F to 104 °F (-10 °C to 40 °C)

### Warranty:

Three-year limited (includes water ingress)

### Approvals:

Load cell is FM approved

## Approvals



## Standard Features

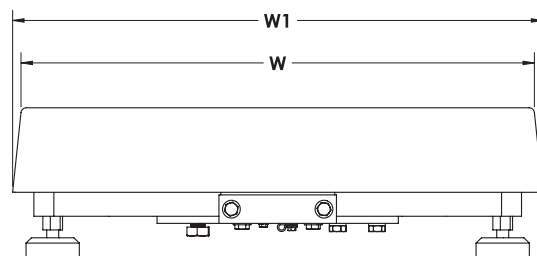
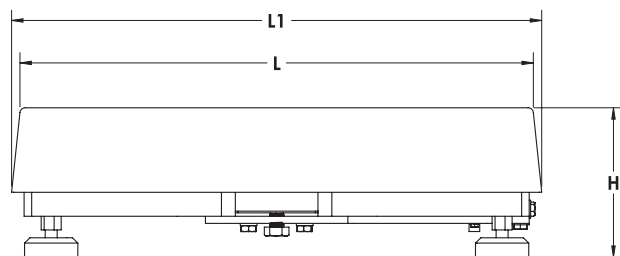
- IP69K stainless steel load cell
- Rugged washdown design, rigid 304 stainless steel frame and cover constructed with continuous welds
- Four adjustable stainless steel support feet
- Meets Sanitary Design Principles
- Meets HACCP requirements

## Dimensions

BenchMark HE-X			
12 × 12 in			
H	5.25 in	W	18.00 in
L	12.00 in	W1	18.50 in
L1	12.50 in		
18 × 18 in			
H	5.25 in	W	18.00 in
L	18.00 in	W1	18.75 in
L1	18.75 in		

18 × 24 in			
H	5.25 in	W	24.00 in
L	18.00 in	W1	24.75 in
L1	18.75 in		
24 × 24 in			
H	5.25 in	W	24.00 in
L	24.00 in	W1	24.75 in
L1	24.75 in		

Note: 1 in = 25.4 mm



## Part Number/Price

Part #	Capacity	Platform Dimensions (L × W × H)	Est. Weight	Price
192346	50 lb (25 kg)	12 × 18 × 5.25 in	59 lb	\$2,925.00
192347	100 lb (50 kg)	12 × 18 × 5.25 in	59 lb	\$2,925.00
191455	50 lb (25 kg)	18 × 18 × 5.25 in	73 lb	\$3,100.00
191456	100 lb (50 kg)	18 × 18 × 5.25 in	73 lb	\$3,100.00
191457	150 lb (75 kg)	18 × 18 × 5.25 in	73 lb	\$3,100.00
191458	200 lb (100 kg)	18 × 18 × 5.25 in	73 lb	\$3,100.00
191459	250 lb (125 kg)	18 × 18 × 5.25 in	73 lb	\$3,100.00
191460	300 lb (150 kg)	18 × 18 × 5.25 in	73 lb	\$3,100.00
191461	500 lb (250 kg)	18 × 18 × 5.25 in	73 lb	\$3,100.00
191462	1,000 lb (500 kg)	18 × 18 × 5.25 in	73 lb	\$3,100.00
191467	50 lb (25 kg)	18 × 24 × 5.25 in	90 lb	\$3,345.00
191469	100 lb (50 kg)	18 × 24 × 5.25 in	90 lb	\$3,345.00
191470	150 lb (75 kg)	18 × 24 × 5.25 in	90 lb	\$3,345.00
191472	200 lb (100 kg)	18 × 24 × 5.25 in	90 lb	\$3,345.00
191473	250 lb (125 kg)	18 × 24 × 5.25 in	90 lb	\$3,345.00
191474	300 lb (150 kg)	18 × 24 × 5.25 in	90 lb	\$3,345.00
191475	500 lb (250 kg)	18 × 24 × 5.25 in	90 lb	\$3,345.00
191476	1,000 lb (500 kg)	18 × 24 × 5.25 in	90 lb	\$3,345.00
191479	100 lb (50 kg)	24 × 24 × 5.25 in	122 lb	\$3,600.00
191480	150 lb (75 kg)	24 × 24 × 5.25 in	122 lb	\$3,600.00
191481	200 lb (100 kg)	24 × 24 × 5.25 in	122 lb	\$3,600.00
191482	250 lb (125 kg)	24 × 24 × 5.25 in	122 lb	\$3,600.00
191483	300 lb (150 kg)	24 × 24 × 5.25 in	122 lb	\$3,600.00
191485	500 lb (250 kg)	24 × 24 × 5.25 in	122 lb	\$3,600.00
191486	1,000 lb (500 kg)	24 × 24 × 5.25 in	122 lb	\$3,600.00

## Options/Accessories

Part #	Description	Catalog Page #
Consult	Scale columns	See page 204
Consult	Ball transfer and roller conveyor scale tops	See page 203
Consult	Mobile scale carts	See page 199 to page 202

# BenchMark® LP

Low-Profile Bench Scale

BENCH SCALES



Ideal for aviation weighing. A complete system can be sold with the Tracer® AV2. Reference Aviation section for specifications.

## Approvals



Measurement  
Canada  
Approved

## Part Number/Price

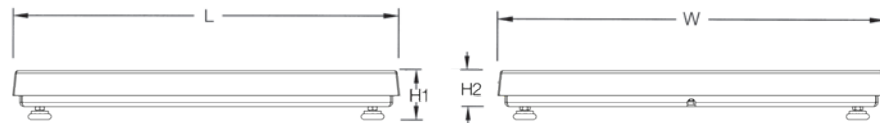
Part #	Capacity	Platform Dimensions L x W x H1 (H2)	Est. Weight	Price
97662	100 lb (50 kg)	18 x 18 x 2.63 in (1.67 in*)	75 lb	\$1,385.00
97663	250 lb (125 kg)	18 x 18 x 2.50 in (1.74 in*)	85 lb	\$1,415.00
97664	500 lb (250 kg)	18 x 18 x 2.69 in (1.93 in*)	85 lb	\$1,450.00
97665	100 lb (50 kg)	24 x 24 x 2.66 in (1.69 in*)	85 lb	\$1,655.00
97666	250 lb (125 kg)	24 x 24 x 2.83 in (2.07 in*)	100 lb	\$1,680.00
97667	500 lb (250 kg)	24 x 24 x 3.02 in (2.26 in*)	100 lb	\$1,715.00
97668	500 lb (250 kg)	30 x 30 x 3.02 in (2.26 in*)	150 lb	\$1,975.00
97669**	1,000 lb (500 kg)	30 x 30 x 3.47 in (2.70 in*)	190 lb	\$2,040.00
97670	500 lb (250 kg)	36 x 36 x 3.02 in (2.26 in*)	175 lb	\$2,590.00
97671**	1,000 lb (500 kg)	36 x 36 x 3.47 in (2.70 in*)	175 lb	\$2,650.00

\*Height without adjustable leveling feet

\*\* Non-NTEP or Measurement Canada Approved

## Options/Accessories

Part #	Description	Price
208904	20 ft cable with DB-9 connector for connecting to Tracer AV2	\$50.00



## Dimensions

BenchMark LP			
PN 97662			
H1	2.63 in	L	18.00 in
H2	1.67 in	W	18.00 in
PN 97663			
H1	2.50 in	L	18.00 in
H2	1.74 in	W	18.00 in
PN 97664			
H1	2.69 in	L	18.00 in
H2	1.93 in	W	18.00 in
PN 97665			
H1	2.66 in	L	24.00 in
H2	1.69 in	W	24.00 in

Note: 1 in = 25.4 mm

PN 97666			
H1	2.83 in	L	24.00 in
H2	2.07 in	W	24.00 in
PN 97667			
H1	3.02 in	L	24.00 in
H2	2.26 in	W	24.00 in
PN 97668			
H1	3.02 in	L	30.00 in
H2	2.26 in	W	30.00 in
PN 97669			
H1	3.47 in	L	30.00 in
H2	2.70 in	W	30.00 in

Note: 1 in = 25.4 mm

## Standard Features

- Mild steel base construction
- 304 stainless steel cover
- ABS junction box
- Four planar beam load cells
- Adjustable leveling feet
- 20 ft of EL147 load cell cable
- Holes in lower frame for mounting scale without adjustable leveling feet

## Specifications

### Load Cell, Rated Output:

IP65 aluminum, 1.0 mV/V  $\pm$ 10%

### End Load Capacity:

60% of full scale capacity

### Cable Length:

20 ft (6.1 m) for connecting junction box to indicator

### Scale Frame:

Mild steel powder coated black

### Scale Cover:

AISI304L, straight line finish, Ra= 45 +/- 10

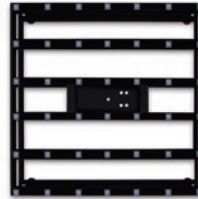
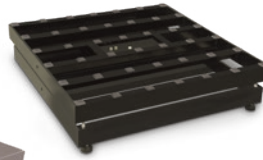
### Warranty:

Two-year limited

### Approvals:

NTEP CC 08-017, Class III 5,000 d  
(except 1,000 lb capacity)  
Measurement Canada AM 5660  
(except 500 kg capacity)





### Standard Features

- Heavy-duty designed mild steel base construction with 304 stainless steel cover
- Polyurethane rubber leveling feet with stainless steel stems

### Specifications

#### Load Cell, NTEP Certified:

IP67 aluminum, environmentally sealed

#### Output Impedance:

350 ohm

#### Maximum Overload:

200%

#### Overload Protection:

Five-point, independently adjusted

#### Scale Frame:

Mild steel powder coated black

#### Scale Cover:

AISI304L, straight line finish, Ra= 45 +/- 10

#### Cable Length:

10 ft (3 m)

#### Compensated Temperature Range:

14 °F to 104 °F (-10 °C to 40 °C)

#### Warranty:

Two-year limited

#### Approvals:

NTEP CC 06-010, Class III 5,000 d

Measurement Canada AM-5625

Load cell is cFMus approved

### Approvals



Measurement  
Canada  
Approved



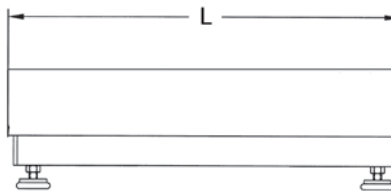
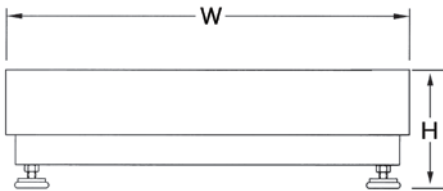
### Part Number/Price

Part #	Capacity	Platform Dimensions (L x W x H)	Est. Weight	Price
93414	250 lb (125 kg)	30 x 30 x 8.75 in	300 lb	\$2,125.00
93415	500 lb (225 kg)	30 x 30 x 8.75 in	300 lb	\$2,125.00
93416	250 lb (125 kg)	36 x 36 x 8.75 in	330 lb	\$2,575.00
93417	500 lb (225 kg)	36 x 36 x 8.75 in	330 lb	\$2,575.00

### Dimensions

BenchMark HD			
30 x 30 in			
H	8.75 in	W	30.00 in
L	30.00 in		
36 x 36 in			
H	8.75 in	W	36.00 in
L	36.00 in		

Note: 1 in = 25.4 mm

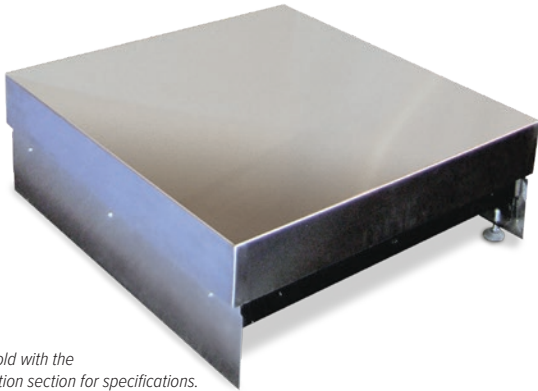





# BenchMark® HD-1 Aviation

Heavy Duty Bench Scale

BENCH SCALES



 Ideal for aviation weighing.  
A complete system can be sold with the  
Tracer® AV2. Reference Aviation section for specifications.

## Approvals



Measurement  
Canada  
Approved



## Part Number/Price

Part #	Capacity	Platform Dimensions	Price
Consult	500 lb (225 kg)	W × D × 12 in	Consult

Note: Maximum size is up to 36in × 36in, height is always 12in  
W × D supplied by customer

## Standard Features

- Heavy-duty scale designed mild steel base construction with 304 stainless steel cover
- Polyurethane rubber leveling feet with stainless steel stems
- Load cell comes standard with DB-9 connector for connecting to Tracer AV2
- Front and back kick plates

## Specifications

### Load Cell, NTEP Certified:

IP67 aluminum, environmentally sealed

### Output Impedance:

350 ohm

### Maximum Overload:

200%

### Overload Protection:

Five-point, independently adjusted

### Cable Length:

10 ft (3 m)

### Compensated Temperature Range:

14 °F to 104 °F (-10 °C to 40 °C)

### Warranty:

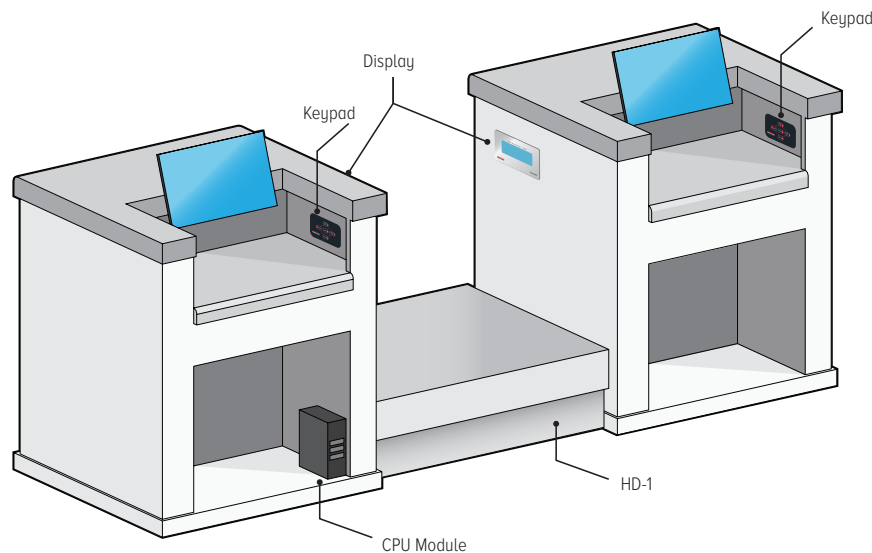
Two-year limited

### Approvals:

NTEP CC 06-010, Class III 5,000 d

Measurement Canada AM-5625

Load cell is cFMus approved

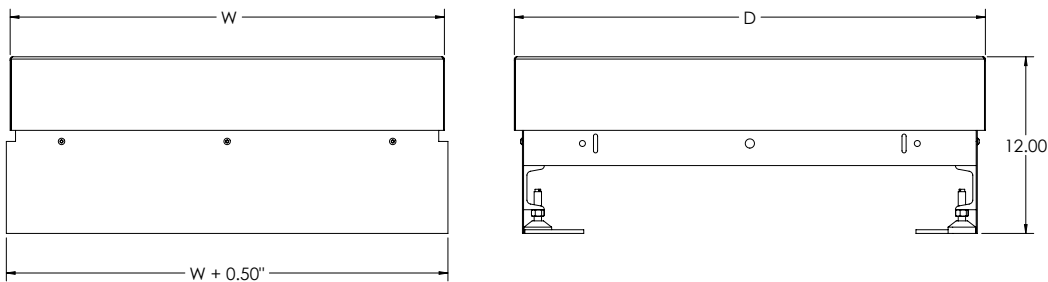
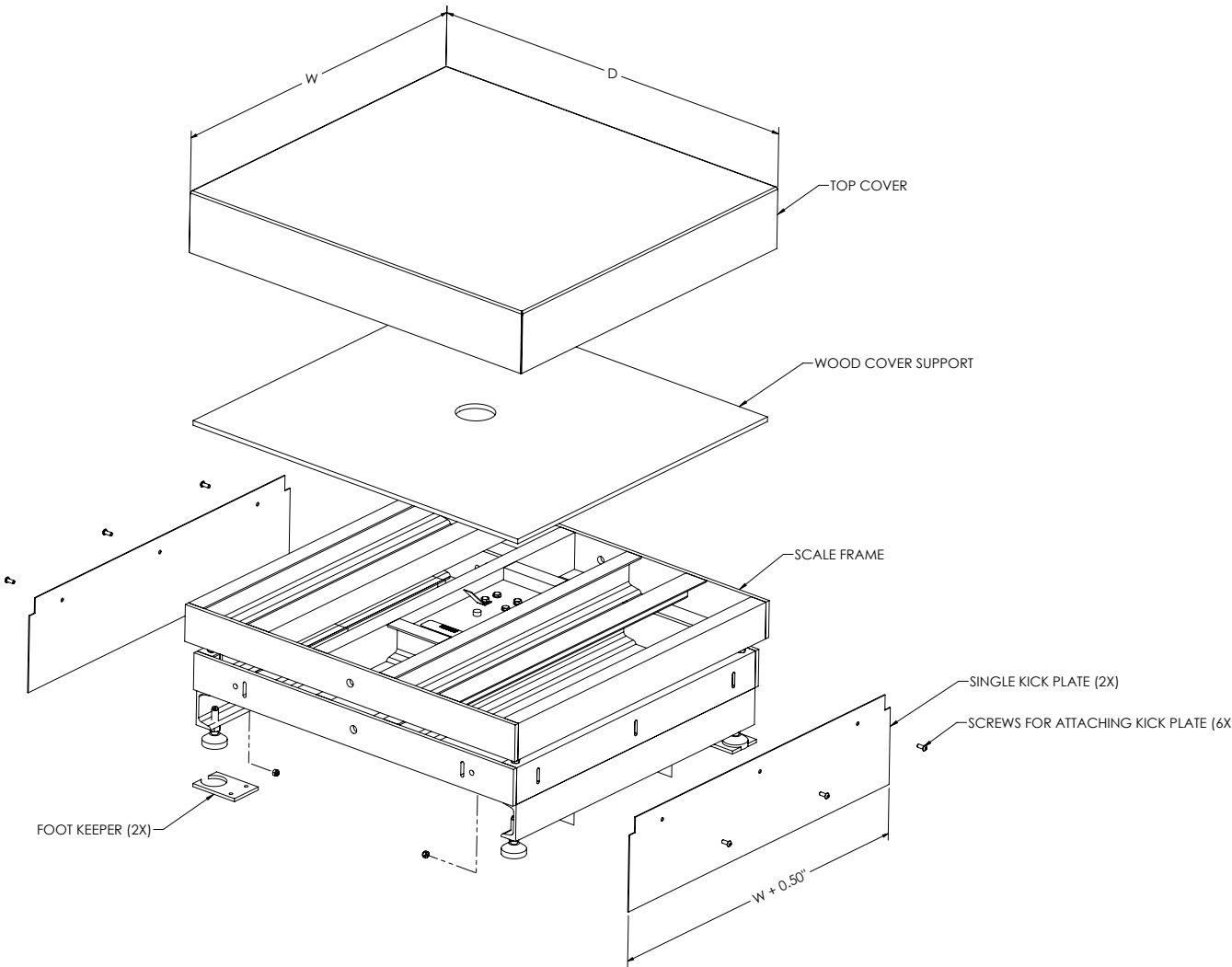


Baggage weighing system with Benchmark HD-1 and Tracer AV2Dual LCD Panel Mount Display, Dual keypad

# BenchMark® HD-1 Aviation

Heavy Duty Bench Scale

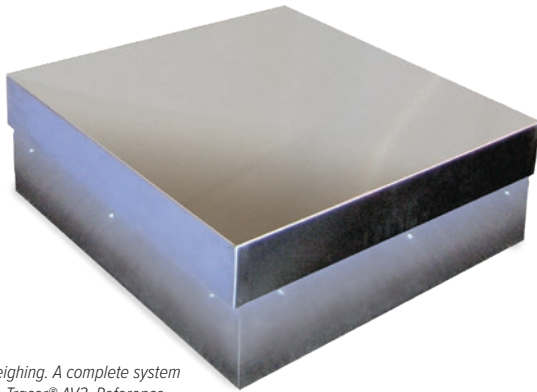
BENCH SCALES




# BenchMark® HD-2 Aviation

Heavy Duty Bench Scale

BENCH SCALES



 Ideal for aviation weighing. A complete system can be sold with the Tracer® AV2. Reference Aviation section for specifications.

## Approvals



Measurement  
Canada  
Approved



## Part Number/Price

Part #	Capacity	Platform Dimensions	Price
Consult	500 lb (225 kg)	W × D × 12 in	Consult

Note: Maximum size is up to 36in × 36in, height is always 12inW × D supplied by customer.

## Standard Features

- Heavy-duty scale designed mild steel base construction with 304 stainless steel cover
- Polyurethane rubber leveling feet with stainless steel stems
- Load cell comes standard with DB-9 connector for connecting to Tracer AV2
- Three-sided kick plate

## Specifications

### Load Cell, NTEP Certified:

IP67 aluminum, environmentally sealed

### Output Impedance:

350 ohm

### Maximum Overload:

200%

### Overload Protection:

Five-point, independently adjusted

### Cable Length:

10 ft (3 m)

### Compensated Temperature Range:

14 °F to 104 °F (-10 °C to 40 °C)

### Warranty:

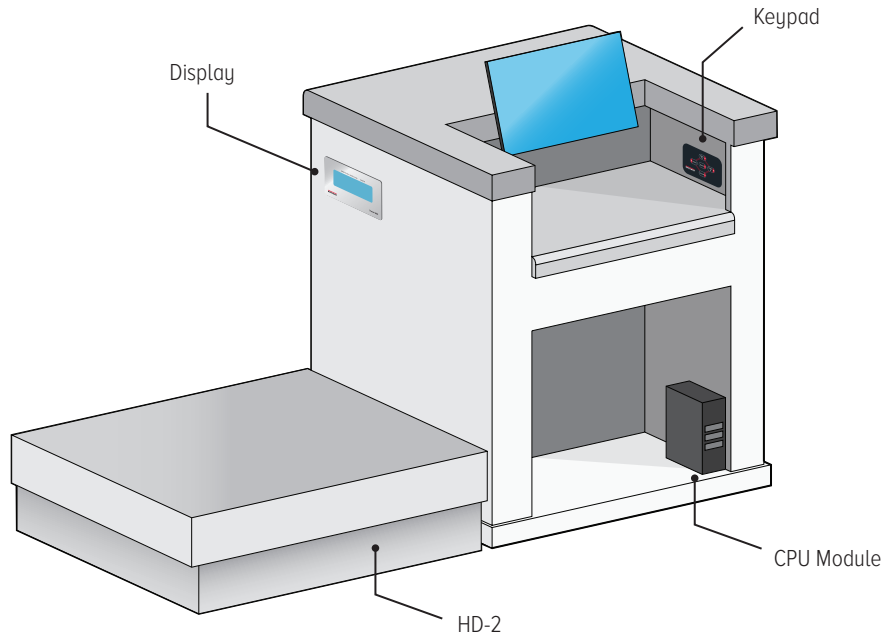
Two-year limited

### Approvals:

NTEP CC 06-010, Class III 5,000 d

Measurement Canada AM-5625

Load cell is cFMus approved

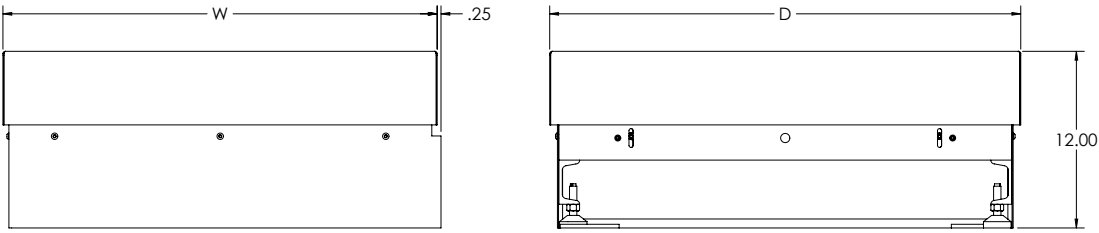
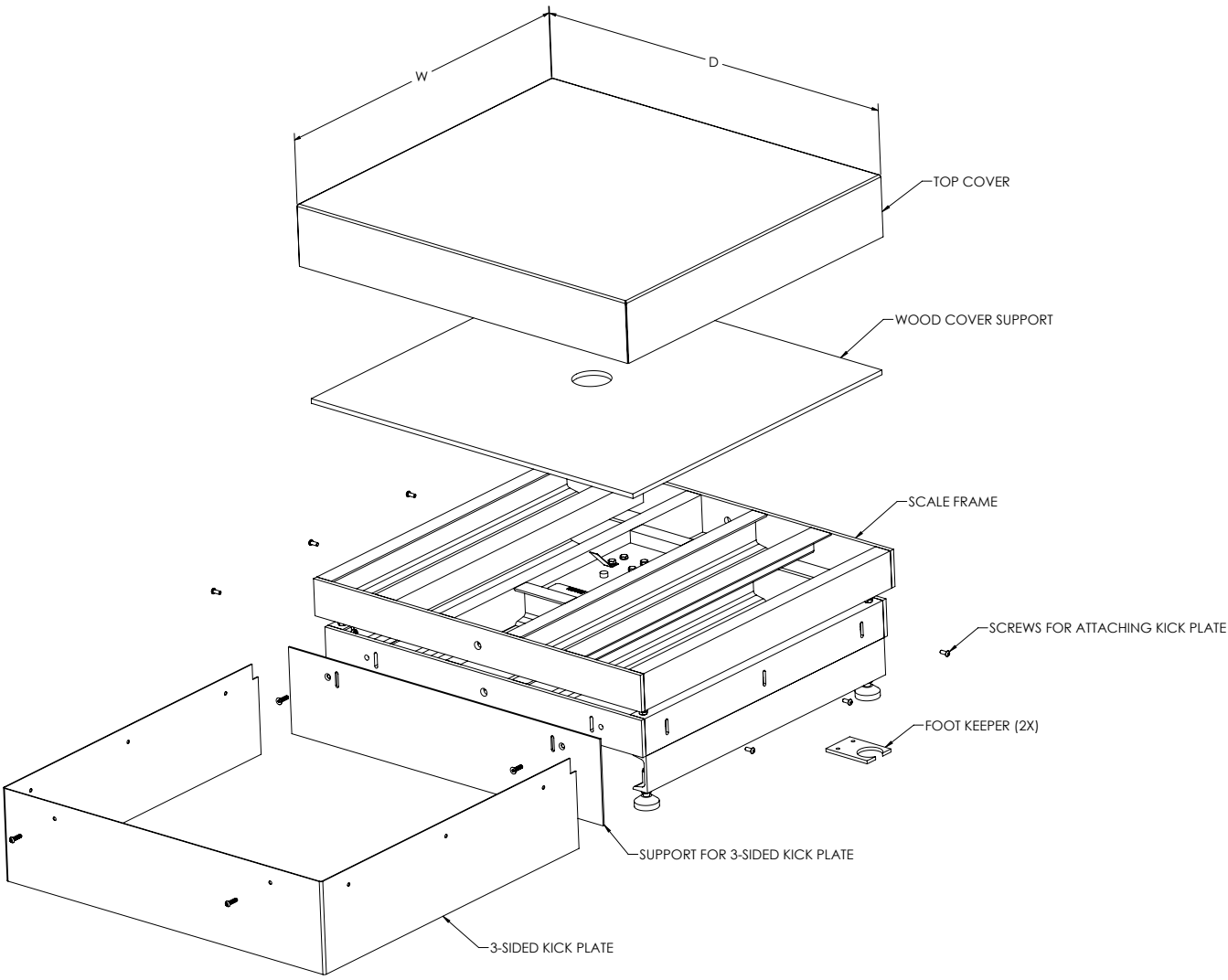


Baggage weighing system with Benchmark HD-2 and Tracer AV2Single LCD Panel Mount Display, Single keypad

# BenchMark® HD-2 Aviation

Heavy Duty Bench Scale

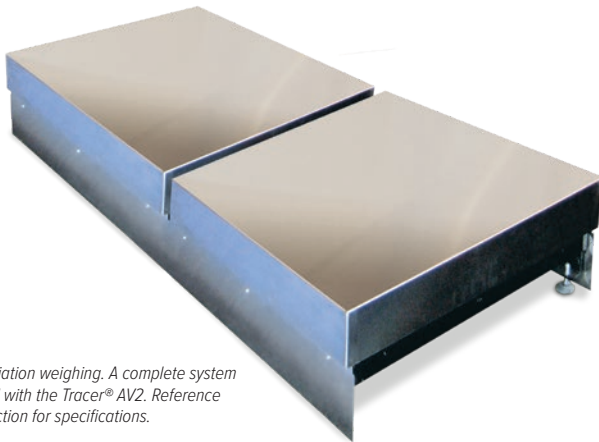
BENCH SCALES




# BenchMark® HD-3 Aviation

Heavy Duty Bench Scale

BENCH SCALES



 Ideal for aviation weighing. A complete system can be sold with the Tracer® AV2. Reference Aviation section for specifications.

## Approvals



Measurement  
Canada  
Approved



## Part Number/Price

Part #	Capacity	Platform Dimensions	Price
Consult	500 lb (225 kg)	W × D × 12 in	Consult

Note: Maximum size is up to 36in × 36in, height is always 12in  
W × D supplied by customer.

## Standard Features

- Two heavy-duty scales designed mild steel base construction with 304 stainless steel cover
- Polyurethane rubber leveling feet with stainless steel stems
- Load cell comes standard with DB-9 connector for connecting to Tracer AV2
- Front and back kick plates for two side-by-side scales

## Specifications

### Load Cell, NTEP Certified:

IP67 aluminum, environmentally sealed

### Output Impedance:

350 ohm

### Maximum Overload:

200%

### Overload Protection:

Five-point, independently adjusted

### Cable Length:

10 ft (3 m)

### Compensated Temperature Range:

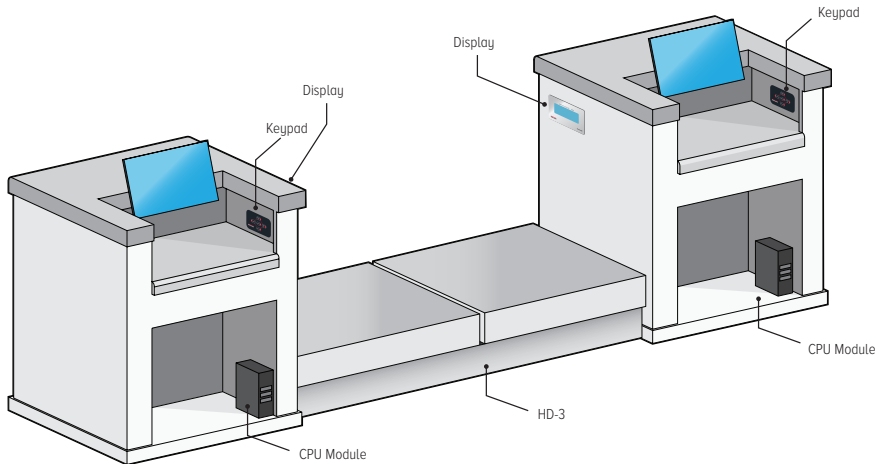
14 °F to 104 °F (-10 °C to 40 °C)

### Warranty:

Two-year limited

### Approvals:

NTEP CC 06-010, Class III 5,000 d  
Measurement Canada AM-5625  
Load cell is cFMus approved

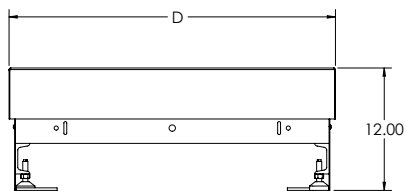
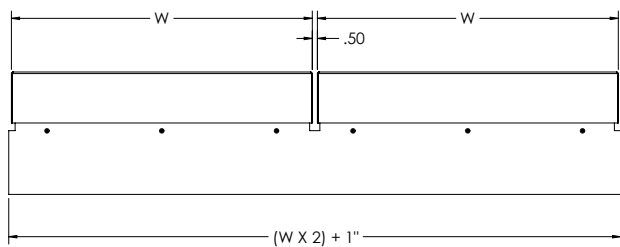
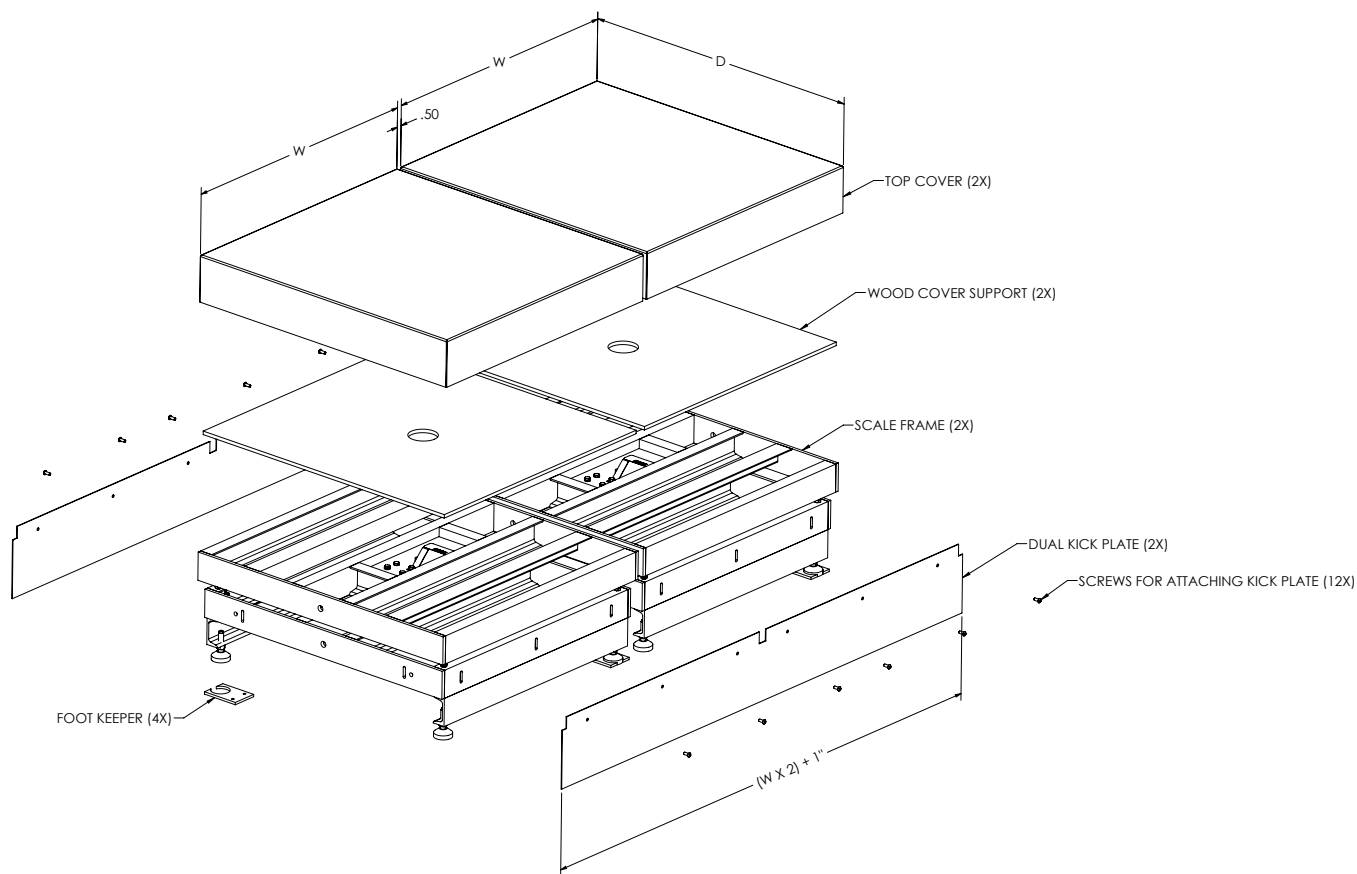


Baggage weighing system with Benchmark HD-3 and Tracer AV2Single LCD Panel Mount Display, Single keypad

# BenchMark® HD-3 Aviation

Heavy Duty Bench Scale

BENCH SCALES



# BenchMark® HDP

Portable Heavy-Duty Bench Scale

BENCH SCALES



## Standard Features

- Mild steel base construction
- 304 stainless steel cover
- Indicator stand for mounting  
480/482 Legend® Series or 380 Synergy

### Wheel model

- Polyurethane rubber leveling feet with stainless steel stems
- 8-inch diameter preformed rubber wheels with ball bearings

### Caster model

- 3 1/2 in diameter preformed rubber casters, two fixed, two swivel with lock

## Specifications

### Load Cell, NTEP Certified:

IP67 aluminum, environmentally sealed

### Output Impedance:

350 ohm

### Maximum Overload:

200%

### Overload Protection:

Five-point, independently adjusted

### Scale Frame:

Mild steel powder-coated black

### Scale Cover:

AISI304L, straight line finish, Ra= 45 +/- 10

### Cable Length:

10 ft (3 m)

### Compensated Temperature Range:

14 °F to 104 °F (-10 °C to 40 °C)

### Warranty:

Two-year limited

### Approvals:

NTEP CC 06-010, Class III 5,000 d  
Measurement Canada AM-5625

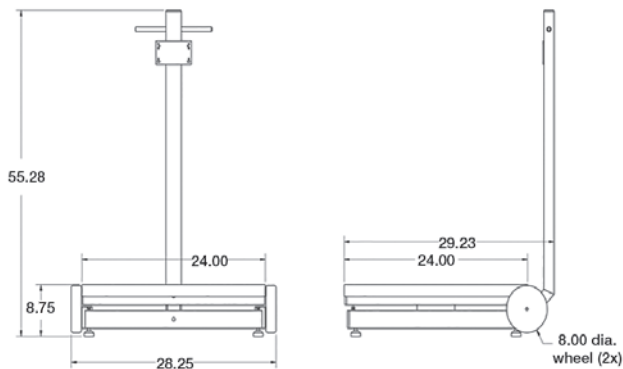
## Approvals



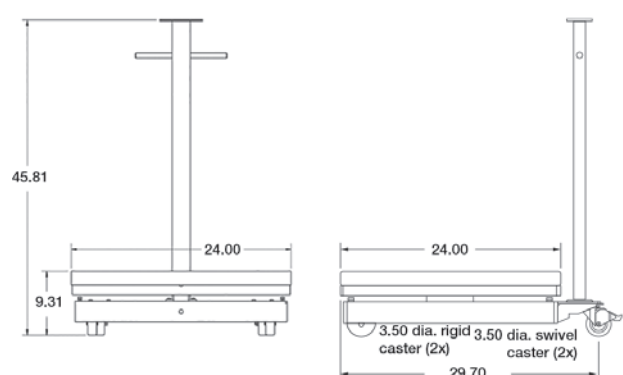
Measurement  
Canada  
Approved

## Part Number/Price

Part #	Capacity	Platform Dimensions	Est. Weight	Price
<b>Wheel Model</b>				
97072	250 lb (125 kg)	24 × 24 × 8.75 in	275 lb	\$2,495.00
97073	500 lb (225 kg)	24 × 24 × 8.75 in	275 lb	\$2,495.00
<b>Caster Model</b>				
97074	250 lb (125 kg)	24 × 24 × 9.31 in	290 lb	\$2,495.00
97075	500 lb (225 kg)	24 × 24 × 9.31 in	290 lb	\$2,495.00



Wheel Model



Caster Model



# Ishida iPC Series

Portable Bench Scale

BENCH SCALES



## Approvals



## Part Number/Price

Part #	Capacity	Platform Dimensions	Est. Weight	Price
<b>Single Display</b>				
<b>75466</b>	100 oz	9.1 × 7.8 in	6 lb	\$295.00
<b>Single Display, Multi-ranging</b>				
<b>75454</b>	6 lb (3 kg)	9.1 × 7.8 in	6 lb	\$295.00
<b>75455</b>	15 lb (6 kg)	9.1 × 7.8 in	6 lb	\$295.00
<b>75457</b>	30 lb (15 kg)	11 × 11.5 in	8 lb	\$295.00
<b>75458</b>	60 lb (30 kg)	11 × 11.5 in	8 lb	\$295.00

## Options/Accessories

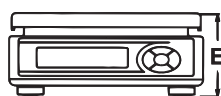
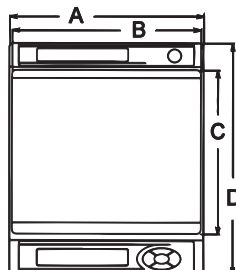
Part #	Description	Price
<b>75470</b>	Stainless steel platter cover (100 oz, 6 lb, and 15 lb capacity)	\$29.00
<b>75739</b>	Stainless steel platter cover (30 lb and 60 lb capacity)	\$29.00
<b>75473 *</b>	AC adapter	\$30.00

\*National Recognized Test Laboratory certified adapter

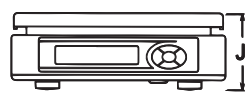
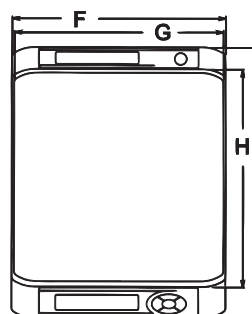
## Dimensions

Ishida iPC Series			
A	9.30 in	F	11.30 in
B	9.10 in	G	11.00 in
C	7.80 in	H	11.50 in
D	11.10 in	I	14.30 in
E	3.90 in	J	4.00 in

Note: 1 in = 25.4 mm



iPC 9.1" x 7.8" platter



iPC 11" x 11.5" platter

## Standard Features

- Six-digit liquid crystal display (LCD)
- Powered by two D cell batteries (up to 500 hours of operation)
- Auto power-off function
- Low battery indicator
- Overload stops
- Batteries and AC adapter not included

## Specifications

### Display:

Six-digit (seven-segment), LCD  
Character height: 1 in (25.4 mm)

### Keyboard:

Zero, tare, on/off, unit (lb/kg)  
NOTE: oz version only displays weight in oz

### Power:

Two dry cell D type batteries\* (up to 500 hours)  
or AC adapter  
Auto power-off function (can be set to 60 min., 20 min., or off)

### Operational Temperature:

23 °F to 104 °F (-5 °C to 40 °C)

### Divisions (Auto Ranging):

**100 oz**  
0.05 oz: 0 to 50 oz  
0.1 oz: 50 to 100 oz

**6 lb**  
0.002 lb: 0 to 3 lb  
0.005 lb: 3 to 6 lb

**15 lb**  
0.005 lb: 0 to 6 lb  
0.01 lb: 6 to 15 lb

**30 lb**  
0.01 lb: 0 to 15 lb  
0.02 lb: 15 to 30 lb

**60 lb**  
0.02 lb: 0 to 30 lb  
0.05 lb: 30 to 60 lb

### Platter Size:

100 oz (3 kg): 9.1 × 7.8 in  
6 lb (3 kg): 9.1 × 7.8 in  
15 lb (6 kg): 9.1 × 7.8 in  
30 lb (15 kg): 11 × 11.5 in  
60 lb (30 kg): 11 × 11.5 in

### Warranty:

One-year limited

### Approvals:

NTEP Certified CC 02-139, Class III  
0 to 30 lb 1,500 d; 60 lb 1,200 d; 0 to 100 oz 1000 d  
UL listed

# Versa-portion®

Compact Scale

BENCH SCALES



## Approvals



Measurement  
Canada  
Approved

## Part Number/Price

Part #	Description	Capacity	Est. Weight	Price
115125	RLP-6S	6.00 × 0.002 lb	15 lb (6.3 kg)	\$450.00
115128	RLP-15S	15.00 × 0.005 lb	15 lb (6.3 kg)	\$450.00
115129	RLP-30S	30.00 × 0.01 lb	15 lb (6.3 kg)	\$450.00
115130	RLP-60S	60.00 × 0.02 lb	15 lb (6.3 kg)	\$450.00

## Options/Accessories

Part #	Description	Price
108516	Rechargeable battery	\$50.00
108518	AC adapter 110-230 VAC, U.S. plug	\$50.00
129953	AC adapter, 110-230 VAC, Euro plug	\$55.00
115519	Additional operator guide	\$10.00

## Standard Features

- Compact and easy to use
- IP68 water and dust resistant
- Stainless steel finish
- Removable weigh pan for quick and easy cleaning
- LED display
- AC adapter included
- Legal for Trade
- HACCP compliant

## Options

- Rechargeable battery

## Specifications

### Display:

LED, six-digit

### Capacity:

Pound	Gram	Ounce
6.0 × 0.002 lb	3,000 × 1 g	60.0 × 0.02 oz
15.0 × 0.005 lb	6,000 × 2 g	150.0 × 0.05 oz
30.0 × 0.01 lb	15,000 × 5 g	300.0 × 0.1 oz
60.0 × 0.02 lb	30,000 × 10 g	600.0 × 0.2 oz

### Display Indicators:

Ounces, grams, pounds, net, center of zero, battery usage

### Keyboard:

Rezero, Tare, On/Off, Unit

### Resolution:

Internal: 90,000 count

Display: 3,000

### Operating Humidity:

15 to 85% RH

### Operating Temperature:

14 °F to 104 °F (-10 °C to 40 °C)

### Power Consumption:

18 W when using DC power, 3 W when using rechargeable battery

Battery life: 60 hours of continuous usage

### Power Source:

AC 117/100 V, 240/230/220 V

DC 12 V/1.5A, DC 6 V 5Ah optional

rechargeable battery

### Calibration:

RLP-S: Grams

### Overall Dimensions:

(L × W × H)

11.4 × 9.9 × 5.3 in

(290 × 252 × 135 mm)

### Package Size:

(L × W × H)

14.8 × 13.3 × 9.6 in

(377 × 337 × 245 mm)

### Platter Size:

9.3 × 7.8 in

(237 × 198.0 mm)

### Approximate Weight:

15 lb (6.3 kg)

### Warranty:

One-year limited

### Approvals:

NTEP CC 10-068, Class III 3,000 d

Measurement Canada AM-5794



### Standard Features

- Simple operation, easy to set up
- Large six-digit backlight LCD display with 1-inch (29 mm) characters protected by heavy-duty tempered glass
- Powered USB HID point of sale interface – kg model only
- Nine-pin RS-232 interface for use with SMA and NCI protocols
- Four AA alkaline battery operation for portability
- Gravitational compensation allows for adjustment of factory calibration to meet your local gravity setting, non-approved

### Approvals



Measurement  
Canada  
Approved



### Part Number/Price

Part #	Platform Capacity	Dimensions	Est. Weight	Price
187832	35 kg triple range	12 × 14 in	18 lb	\$625.00
195741	35 kg triple interval	12 × 14 in	18 lb	\$625.00
192361	70 lb dual range	12 × 14 in	18 lb	\$625.00
195742	70 lb dual interval	12 × 14 in	18 lb	\$625.00

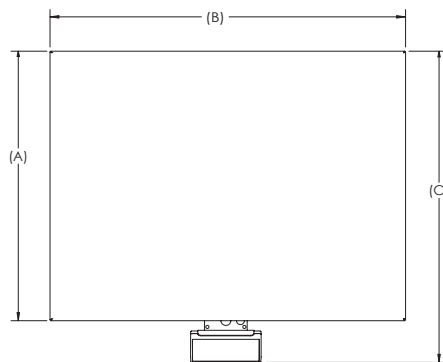
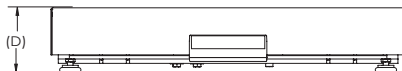
### Options/Accessories

Part #	Description	Est. Weight	Price
174783	Column bracket and post (12 × 14 scale only)	2 lb	\$50.00
180901	Second customer display, BenchPro BP-P no keyboard with 68 in cable	4 lb	\$72.00
174784	Second remote operator display, BenchPro BP-P with 68 in cable	4 lb	\$88.00
183103	16 in (H) tabletop display post for use with second display, customer or remote operator	4 lb	\$215.00
178501	USB RS-232 serial adapter 3.28 ft cable	1 lb	\$60.00

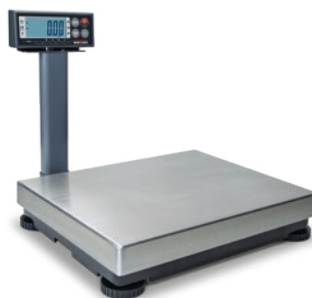
### Dimensions

BenchPro BP-P			
A	12.00 in	C	14.50 in
B	14.00 in	D	2.70 in

Note: 1 in = 25.4 mm



BP-P shown with 183103 and 180901



Shown with 174783

### Specifications

#### Power:

In-line power supply (included)  
Input: 100 to 240 VAC, +10% -15%, 3-wire w/ground  
Terminated with standard USA 3-prong plug  
Output: 12 V at 0.1 Amps DC minimum  
Frequency: 50/60 Hz +/-3 Hz, standard  
Power supply approvals: UL, CE, EN, CUL

#### Battery Type:

Four AA alkaline batteries, 6 V,  
with low battery indication at 4.3 volts

#### Battery Life:

50 to 250 hrs depending on backlight and  
auto-shutdown settings

#### Resolution:

Internal: 500,000 counts

#### USB HID:

USB 2.0 full speed; Vendor ID: 1C19;  
Product ID: 0002

#### Divisions (multi-range):

##### kg triple range:

0 to 5 kg × 0.001 kg  
0 to 10 kg × 0.002 kg  
0 to 35 kg × 0.01 kg

##### lb/oz dual range:

0 to 7 lb × 0.05 oz  
0 to 70 lb × 0.2 oz

#### Divisions (Multi-Interval):

##### Kg triple interval:

0 to 5 kg × 0.001 kg  
5 to 10 kg × 0.002 kg  
10 to 35 kg × 0.01 kg

##### Lb/oz dual interval:

0 to 7 lb × 0.05 oz  
7 to 70 lb × 0.2 oz

#### Material:

Display: ABS plastic housing  
Scale base:  
Die-cast aluminum load bridge and base housing  
with stainless steel weight platter

#### Dynamic Response:

Response time for stable weight:  
0 to 1,000d, 1,000 ms, maximum mean average  
1,000d +, 1,500 ms, maximum mean average

#### Overload Protection:

Corner & center overload protection

#### Display:

Large six-digit backlight LCD display with 1-inch  
(29 mm) Characters protected by heavy-duty  
tempered glass

#### Annunciators:

Six: Zero, gross/brutto, net, W1/W2/W3 multi-range

#### Keys/Buttons:

Three: Units, on/off, F1  
(Tare is not applicable)  
Minimum key press life of 500,000 cycles

#### RS-232 Cable (Included):

10 ft DB 9-pin male to female, straight pass-through

#### USB Cable (Included):

46 in (1,168 mm) A/B type USB cable

#### Warranty:

Two-year limited

#### Approvals:

NTEP CC 17-002  
Canada Weights and Measures: AM - 6050  
CE Marked

# BenchPro™ BP-S

Shipping Bench Scale

BENCH SCALES



Approvals



Measurement  
Canada  
Approved



## Part Number/Price

Part #	Platform Capacity	Dimensions	Est. Weight	Price
174879 *	150 × 0.05 lb (75 × 0.02 kg)	12 × 14 in	17 lb	\$625.00
182993	150 × 0.05 lb (75 × 0.02 kg)	12 × 16 in	31 lb	\$1,135.00
182391	100 × 0.02 lb (50 × 0.01 kg)	18 × 18 in	63 lb	\$1,490.00
182378	150 × 0.05 lb (75 × 0.02 kg)	18 × 18 in	63 lb	\$1,490.00
182382	300 × 0.1 lb (150 × 0.05 kg)	18 × 18 in	63 lb	\$1,490.00
182395	300 × 0.1 lb (150 × 0.05 kg)	20 × 20 in	76 lb	\$1,670.00
182399	300 × 0.1 lb (150 × 0.05 kg)	24 × 24 in	131 lb	\$1,840.00

\* Battery or DC power

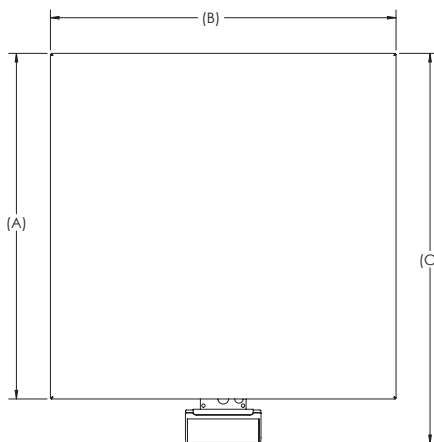
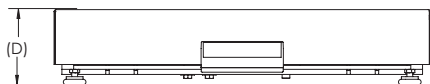
## Options/Accessories

Part #	Description	Est. Weight	Price
174783	Column bracket and post (12 × 14 scale only)	2 lb	\$50.00
180901	Second customer display, BenchPro BP-S no keyboard with 68 in cable	4 lb	\$72.00
174784	Second remote operator display, BenchPro BP-S with 68 in cable	4 lb	\$88.00
183103	16 in (H) tabletop display post for use with second display, customer or remote operator	4 lb	\$215.00
178501	USB RS-232 serial adapter	1 lb	\$60.00

## Dimensions

	A	B	C	D
12 × 14 in	12.00 in	14.00 in	14.50 in	2.70 in
12 × 16 in	12.00 in	16.00 in	15.30 in	4.32 in
18 × 18 in	18.00 in	18.00 in	21.10 in	4.30 in
20 × 20 in	20.00 in	20.00 in	23.10 in	4.30 in
24 × 24 in	24.00 in	24.00 in	27.10 in	4.30 in

Note: 1 in = 25.4 mm



## Standard Features

- Simple operation, easy to set up
- Large six-digit backlight LCD display with 1-inch (29 mm) characters protected by heavy-duty tempered glass
- Powered USB HID point of sale interface
- Nine-pin RS-232 interface for use with SMA and NCI protocols
- Four AA alkaline battery operation for portability
- Gravitational compensation allows for adjustment of factory calibration to meet your local gravity setting, non-approved
- Compatible with FedEx Ship Manager® and UPS Worldship®

## Specifications

### Power:

In-line power supply (included)  
Input: 100 to 240 VAC, +10% -15%, 3-wire w/ground  
Terminated with standard USA 3-prong plug

### Battery: (12 × 14 in scale only)

Four AA alkaline batteries,  
6 V, with low battery indication at 4.3 volts

### Power Consumption:

12 V at 0.1 Amps DC minimum

### Frequency:

50/60 Hz +/- 3 Hz, standard

### Battery Life:

50 to 250 hrs depending on backlight and auto-shutdown settings

### Resolution:

Internal: 500,000 counts

### USB HID:

USB 2.0 full speed; Vendor ID: 1C19;  
Product ID: 0002

### RS-232 Cable (Included):

10 ft DB 9-pin male to female, straight pass-through

### USB Cable (Included):

46 in (1,168 mm) A/B type USB cable

### Dynamic Response:

Response time for stable weight:  
0 to 1,000d, 1,000 ms, maximum mean average  
1,000d +, 1,500 ms, maximum mean average

### Overload Protection:

Corner & center overload protection

### Annunciators:

Six: zero, gross/brutto, net, W1/W2/W3 multi-range

### Display:

Large six-digit backlight LCD display with 1-inch (29 mm)  
Characters protected by heavy-duty tempered glass

### Keys/Buttons:

Four: Units, tare, on/off, F1  
Minimum key press life of 500,000 cycles

### Material:

Display: ABS plastic housing  
Scale base: Powder coat painted mild steel  
base plate and load bridge with stainless steel weight platter  
BP-S 12 × 14 in: Die-cast aluminum load bridge and base housing with stainless steel weight platter

### Warranty:

Two-year limited

### Approvals:

NTEP CC 17-002  
Canada Weights and Measures: AM-6050  
CE Marked



## Approvals



Measurement  
Canada  
Approved



## Part Number/Price

Part #	Capacity	Dimensions	Est. Weight	Price
182995	150 × 0.05 lb (75 × 0.02 kg)	12 × 16 in	37 lb	\$1,365.00
182393	100 × 0.02 lb (50 × 0.01 kg)	18 × 18 in	73 lb	\$1,835.00
182380	150 × 0.05 lb (75 × 0.02 kg)	18 × 18 in	73 lb	\$1,835.00
182384	300 × 0.1 lb (150 × 0.05 kg)	18 × 18 in	73 lb	\$1,835.00
182397	300 × 0.1 lb (150 × 0.05 kg)	20 × 20 in	88 lb	\$2,035.00
182401	300 × 0.1 lb (150 × 0.05 kg)	24 × 24 in	131 lb	\$2,240.00

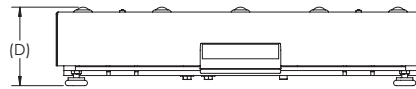
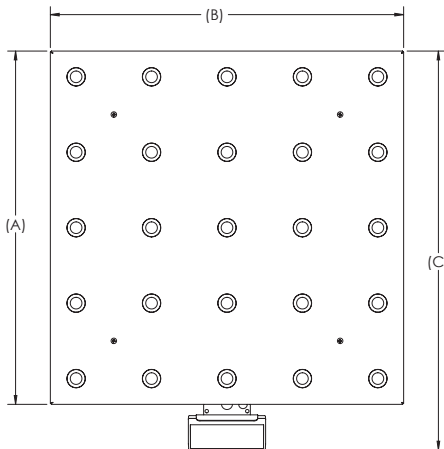
## Options/Accessories

Part #	Description	Est. Weight	Price
180901	Second customer display, BenchPro BP-SB no keyboard with 68 in cable	4 lb	\$72.00
174784	Second remote operator display, BenchPro BP-SB with 68 in cable	4 lb	\$88.00
183103	16 in (H) tabletop display post for use with second display, customer or remote operator	4 lb	\$215.00
178501	USB RS-232 serial adapter	1 lb	\$60.00

## Dimensions

	A	B	C	D
12 × 16 in	12.00 in	16.00 in	15.30 in	4.32 in
18 × 18 in	18.00 in	18.00 in	21.10 in	4.86 in
20 × 20 in	20.00 in	20.00 in	23.10 in	4.86 in
24 × 24 in	24.00 in	24.00 in	27.10 in	4.86 in

Note: 1 in = 25.4 mm



## Standard Features

- Simple operation, easy to set up
- Large six-digit backlight LCD display with 1-inch (29 mm) characters protected by heavy-duty tempered glass
- Powered USB HID point of sale interface
- Nine-pin RS-232 interface for use with SMA and NCI protocols
- Four AA alkaline battery operation for portability
- Gravitational compensation allows for adjustment of factory calibration to meet your local gravity setting, non-approved
- Compatible with FedEx Ship Manager® and UPS Worldship®

## Specifications

### Power:

In-line power supply (included)  
Input: 100 to 240 VAC, +10% -15%, 3-wire w/ground  
Terminated with standard USA 3-prong plug  
Output: 12 V at 0.1 Amps DC minimum  
Frequency: 50/60 Hz +/-3 Hz, standard  
Approvals: UL, CE, EN, CUL

### Resolution:

Internal: 500,000 counts

### USB HID:

USB 2.0 full speed; Vendor ID: 1C19;  
Product ID: 0002

### RS-232 Cable (Included):

10 ft DB 9-pin male to female, straight pass-through

### USB Cable (Included):

46 in (1,168 mm) A/B type USB cable

### Dynamic Response:

Response time for stable weight:  
0 to 1,000d, 1,000 ms, maximum mean average  
1,000d +, 1,500 ms, maximum mean average

### Overload Protection:

Corner & center overload protection

### Annunciators:

Six: Zero, gross/brutto, net, W1/W2/W3 multi-range

### Display:

Large six-digit backlight LCD display with 1-inch (29 mm) Characters protected by heavy-duty tempered glass

### Keys/Buttons:

Four: Units, tare, on/off, F1  
Minimum key press life of 500,000 cycles

### Material:

Display: A BS plastic housing  
Scale base: Powder coat painted mild steel base plate and load bridge.  
Carbon steel ball with carbon steel zinc-plated housing. Stainless steel shroud.

### Warranty:

Two-year limited

### Approvals:

NTEP CC 17-002  
Canada Weights and Measures: AM - 6050  
CE Marked



# BenchPro™ BP-SR

Shipping Bench Scale with Roller Conveyor

BENCH SCALES



## Approvals



Measurement  
Canada  
Approved



## Part Number/Price

Part #	Platform Capacity	Dimensions	Est. Weight	Price
182996	150 × 0.05 lb (75 × 0.02 kg)	12 × 16 in	41 lb	\$1,290.00
182394	100 × 0.02 lb (50 × 0.01 kg)	18 × 18 in	77 lb	\$1,650.00
182381	150 × 0.05 lb (75 × 0.02 kg)	18 × 18 in	77 lb	\$1,650.00
182386	300 × 0.1 lb (150 × 0.05 kg)	18 × 18 in	77 lb	\$1,650.00
182398	300 × 0.1 lb (150 × 0.05 kg)	20 × 20 in	94 lb	\$1,769.00
182402	300 × 0.1 lb (150 × 0.05 kg)	24 × 24 in	131 lb	\$1,939.00

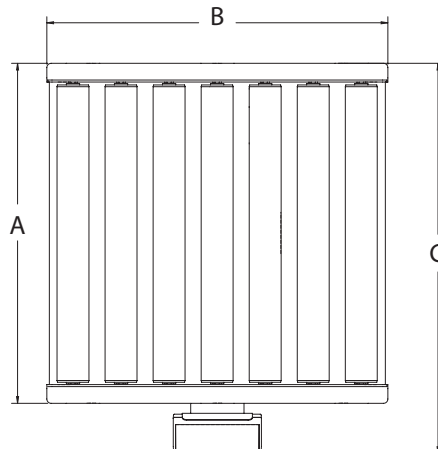
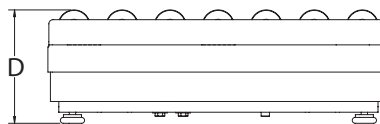
## Options/Accessories

Part #	Description	Est. Weight	Price
180901	Second customer display, BenchPro BP-SR no keyboard with 68 in cable	4 lb	\$72.00
174784	Second remote operator display, BenchPro BP-SR with 68 in cable	4 lb	\$88.00
183103	16 in (H) tabletop display post for use with second display, customer or remote operator	4 lb	\$215.00
178501	USB RS-232 serial adapter	1 lb	\$60.00

## Dimensions

	A	B	C	D
12 × 16 in	12.00 in	16.00 in	15.30 in	5.95 in
18 × 18 in	18.00 in	18.00 in	21.10 in	6.50 in
20 × 20 in	20.00 in	20.00 in	23.10 in	6.50 in
24 × 24 in	24.00 in	24.00 in	27.10 in	6.50 in

Note: 1 in = 25.4 mm



## Standard Features

- Simple operation, easy to set up
- Large six-digit backlight LCD display with 1-inch (29-mm) characters protected by heavy-duty tempered glass
- Powered USB HID point of sale interface
- Nine-pin RS-232 interface for use with SMA and NCI protocols
- Four AA alkaline battery operation for portability
- Gravitational compensation allows for adjustment of factory calibration to meet your local gravity setting, non-approved
- Compatible with FedEx Ship Manager® and UPS Worldship®

## Specifications

### Power:

In-line power supply (included)  
Input: 100 to 240 VAC, +10% -15%, 3-wire w/ground  
Terminated with standard USA 3-prong plug  
Output: 12 V at 0.1 Amps DC minimum  
Frequency: 50/60 Hz +/-3 Hz, standard  
Approvals: UL, CE, EN, CUL

### Resolution:

Internal: 500,000 counts

### USB HID:

USB 2.0 full speed; Vendor ID: 1C19;  
Product ID: 0002

### RS-232 Cable (Included):

10 ft DB 9-pin male to female, straight pass-through

### USB Cable (Included):

46 in (1,168 mm) A/B type USB cable

### Dynamic Response:

Response time for stable weight:  
0 to 1,000d, 1,000 ms, maximum mean average  
1,000d +, 1,500 ms, maximum mean average

### Overload Protection:

Corner & center overload protection

### Annunciators:

Six: zero, gross/brutto, net, W1/W2/W3 multi-range

### Display:

Large six-digit backlight LCD display with 1-inch (29 mm) Characters protected by heavy-duty tempered glass

### Keys/Buttons:

Four: Units, tare, on/off, F1  
Minimum key press life of 500,000 cycles

### Material:

Display: A BS plastic housing  
Scale base: Powder coat painted mild steel  
base plate and load bridge with stainless steel  
roller conveyor

### Warranty:

Two-year limited

### Approvals:

NTEP CC 17-002  
Canada Weights and Measures: AM - 6050  
CE Marked



# BenchMark® MSC-10

Mobile Scale Cart

BENCH SCALES



## Standard Features

- Two swivel, locking casters and two rigid casters
- Adjustable height with telescoping tube designed legs
- 18-inch indicator stand for mounting CW-90/90X, 480/480 Plus, 482/482 Plus, 680 Synergy, 380 Synergy

## Specifications

**Capacity:**  
1,000 lb (500 kg) maximum

**Warranty:**  
One-year limited

## Part Number/Price

Part #	Description	Cart Dimensions (L × W × H)	Est. Weight	Price
<b>Mild Steel</b>				
190201	Designed for 12 × 18 in Benchmark MS scale	25 × 14 × 41.89-51.89 in (22.78 to 32.78 in*)	70 lb	\$1,275.00
190202	Designed for 18 × 18 in Benchmark MS scale	25 × 20 × 41.89-51.89 in (22.78 to 32.78 in*)	83 lb	\$1,305.00
190203	Designed for 18 × 24 in Benchmark MS scale	31 × 20 × 41.89-51.89 in (22.78 to 32.78 in*)	93 lb	\$1,335.00
190204	Designed for 24 × 24 in Benchmark MS scale	31 × 26 × 41.89-51.89 in (22.78 to 32.78 in*)	101 lb	\$1,365.00
<b>Stainless Steel</b>				
190205	Designed for 12 × 18 in Benchmark SS and Benchmark HE scale	25 × 14 × 41.89-51.89 in (22.78 to 32.78 in*)	70 lb	\$1,595.00
190206	Designed for 18 × 18 in Benchmark SS and Benchmark HE scale	25 × 20 × 41.89-51.89 in (22.78 to 32.78 in*)	83 lb	\$1,640.00
190207	Designed for 18 × 24 in Benchmark SS and Benchmark HE scale	31 × 20 × 41.89-51.89 in (22.78 to 32.78 in*)	93 lb	\$1,685.00
190209	Designed for 24 × 24 in Benchmark SS and Benchmark HE scale	31 × 26 × 41.89-51.89 in (22.78 to 32.78 in*)	101 lb	\$1,730.00

\*Height of cart without indicator stand

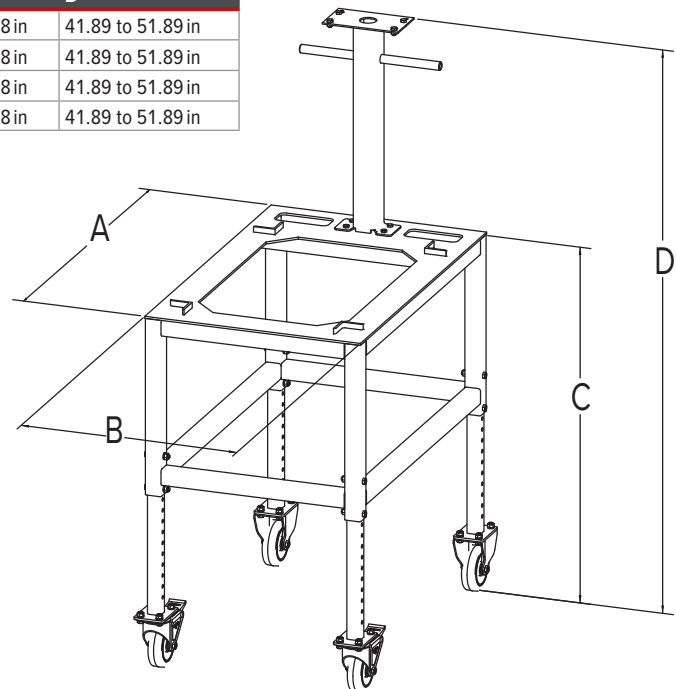
Wheels on standard carts are not conductive. If the end user plans to use the cart with an IS indicator, they will need a custom cart quoted with conductive wheels.

Cart not compatible with HE-X. See MSC-40.

## Dimensions

	A	B	C	D
Designed for 12 × 18 in scale	25.00 in	14.00 in	22.78 to 32.78 in	41.89 to 51.89 in
Designed for 18 × 18 in scale	25.00 in	20.00 in	22.78 to 32.78 in	41.89 to 51.89 in
Designed for 18 × 24 in scale	31.00 in	20.00 in	22.78 to 32.78 in	41.89 to 51.89 in
Designed for 24 × 24 in scale	31.00 in	26.00 in	22.78 to 32.78 in	41.89 to 51.89 in

Note: 1 in = 25.4 mm



# BenchMark® MSC-20

Mobile Scale Cart

BENCH SCALES



## Standard Features

- Two swivel, locking casters and two rigid casters
- Designed to easily transport counting scale and secondary scale

## Specifications

### Capacity:

Lower base frame: 1,000 lb (500 kg) maximum  
Upper base frame: 50 lb (25 kg) maximum

### Warranty:

One-year limited

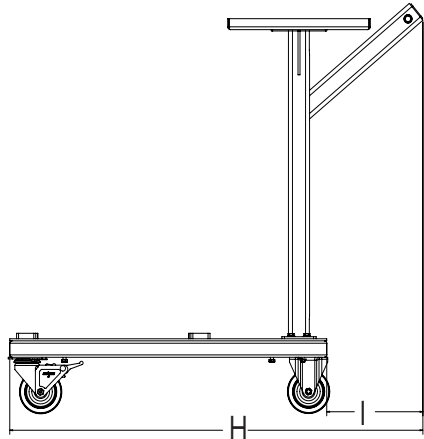
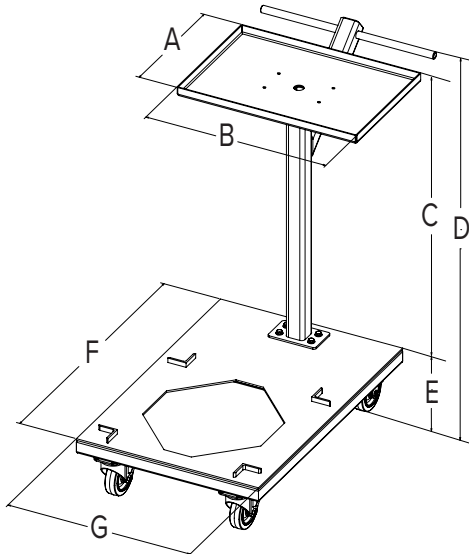
## Part Number/Price

Part #	Description	Est. Weight	Price
<b>Mild Steel</b>			
197502	Designed for 12 × 18 in Benchmark MS scale	85 lb	\$1,360.00
197503	Designed for 18 × 18 in Benchmark MS scale	85 lb	\$1,380.00
197504	Designed for 18 × 24 in Benchmark MS scale	88 lb	\$1,405.00
197505	Designed for 24 × 24 in Benchmark MS scale	96 lb	\$1,425.00
<b>Stainless Steel</b>			
197506	Designed for 12 × 18 in Benchmark SS and Benchmark HE scale	90 lb	\$1,930.00
197507	Designed for 18 × 18 in Benchmark SS and Benchmark HE scale	90 lb	\$1,950.00
197508	Designed for 18 × 24 in Benchmark SS and Benchmark HE scale	93 lb	\$1,970.00
197509	Designed for 24 × 24 in Benchmark SS and Benchmark HE scale	101 lb	\$2,000.00

## Dimensions

	A	B	C	D	E	F	G	H	I
Designed for 12 × 18 in scale	19.50 in	13.25 in	29.18 in	36.00 in	6.81 in	30.00 in	20.00 in	39.00 in	9.00 in
Designed for 18 × 18 in scale	19.50 in	13.25 in	29.18 in	36.00 in	6.81 in	30.00 in	20.00 in	39.00 in	9.00 in
Designed for 18 × 24 in scale	19.50 in	13.25 in	29.18 in	36.00 in	6.81 in	35.00 in	20.00 in	44.00 in	9.00 in
Designed for 24 × 24 in scale	19.50 in	13.25 in	29.18 in	36.00 in	6.81 in	35.00 in	26.00 in	44.00 in	9.00 in

Note: 1 in = 25.4 mm



# BenchMark® MSC-30

Mobile Scale Cart

BENCH SCALES



## Standard Features

- Two swivel, locking casters and two rigid casters
- Indicator stand for mounting CW-90/90X, 480/480Plus, 482/482Plus, 680 Synergy, 380 Synergy

## Specifications

**Capacity:**  
1,000 lb (500 kg) maximum

**Warranty:**  
One-year limited

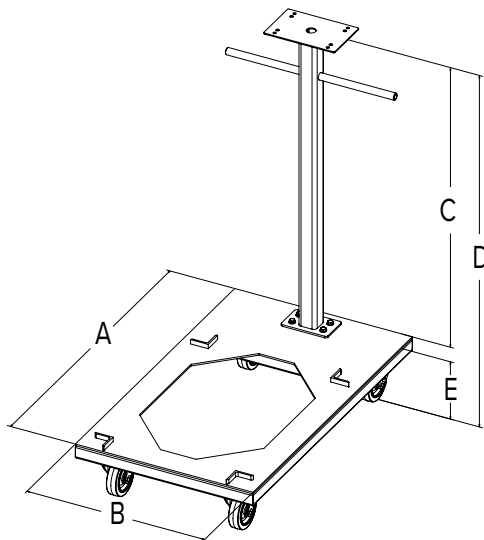
## Part Number/Price

Part #	Description	Est. Weight	Price
<b>Mild Steel</b>			
<b>197510</b>	Designed for 12 × 18 Benchmark MS scale	67 lb	\$1,360.00
<b>197511</b>	Designed for 18 × 18 Benchmark MS scale	67 lb	\$1,380.00
<b>197512</b>	Designed for 18 × 24 Benchmark MS scale	70 lb	\$1,405.00
<b>197513</b>	Designed for 24 × 24 Benchmark MS scale	78 lb	\$1,425.00
<b>Stainless Steel</b>			
<b>197514</b>	Designed for 12 × 18 Benchmark SS and Benchmark HE scale	72 lb	\$1,930.00
<b>197515</b>	Designed for 18 × 18 Benchmark SS and Benchmark HE scale	72 lb	\$1,950.00
<b>197516</b>	Designed for 18 × 24 Benchmark SS and Benchmark HE scale	75 lb	\$1,970.00
<b>197517</b>	Designed for 24 × 24 Benchmark SS and Benchmark HE scale	83 lb	\$2,000.00

## Dimensions

	A	B	C	D	E
Designed for 12 × 18 scale	30.00 in	20.00 in	34.25 in	41.00 in	6.81 in
Designed for 18 × 18 scale	30.00 in	20.00 in	34.25 in	41.00 in	6.81 in
Designed for 18 × 24 scale	35.00 in	20.00 in	34.25 in	41.00 in	6.81 in
Designed for 24 × 24 scale	35.00 in	26.00 in	34.25 in	41.00 in	6.81 in

Note: 1 in = 25.4 mm



# BenchMark® MSC-40

Mobile Scale Cart

BENCH SCALES



## Standard Features

- Two swivel, locking casters and two rigid casters
- Rugged washdown design meets Sanitary Design Principles

## Specifications

**Capacity:**  
1,000 lb (500 kg) maximum

**Warranty:**  
One-year limited

## Part Number/Price

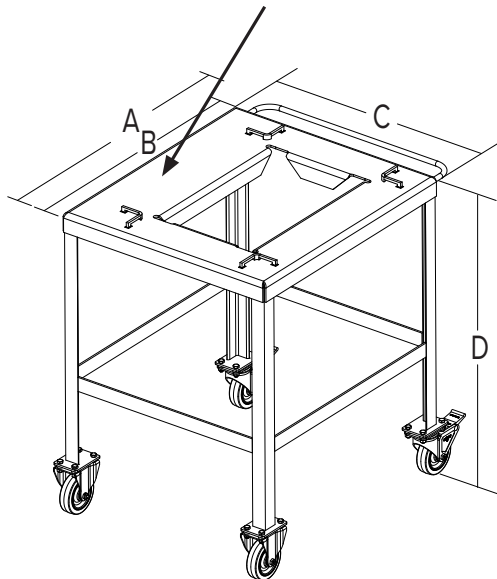
Part #	Description	Est. Weight	Price
Stainless Steel			
197518	Designed for 12 × 18 in Benchmark HE-X scale	62 lb	\$1,795.00
197519	Designed for 18 × 18 in Benchmark HE-X scale	62 lb	\$1,895.00
197520	Designed for 18 × 24 in Benchmark HE-X scale	69 lb	\$1,995.00
197521	Designed for 24 × 24 in Benchmark HE-X scale	79 lb	\$2,095.00

## Dimensions

	A	B	C	D
Designed for 12 × 18 in scale	24.75 in	21.00 in	17.88 in	32.00 in
Designed for 18 × 18 in scale	24.75 in	21.00 in	24.00 in	32.00 in
Designed for 18 × 24 in scale	30.75 in	27.00 in	24.00 in	32.00 in
Designed for 24 × 24 in scale	30.75 in	27.00 in	30.00 in	32.00 in

Note: 1 in = 25.4 mm

Note: This side of cart is larger to accommodate BenchMark HE-X with indicator column



# Bench Scale Ball Transfer and Roller Conveyor

1. Rice Lake Weighing Systems model number or part number of bench scale \_\_\_\_\_
2. Dimensions of scale: \_\_\_\_\_ in L × \_\_\_\_\_ in W
3. Capacity of scale: \_\_\_\_\_ lb
4. Dimensions of the smallest box/container to be used with the scale: \_\_\_\_\_ in L × \_\_\_\_\_ in W

## Ball Transfer

5. Construction of ball transfer
  - ☐ Steel ball, steel housing zinc finish
  - ☐ Stainless steel ball, steel housing zinc finish
  - ☐ Stainless steel ball, stainless steel housing
6. Center-to-center ball dimension, if known:



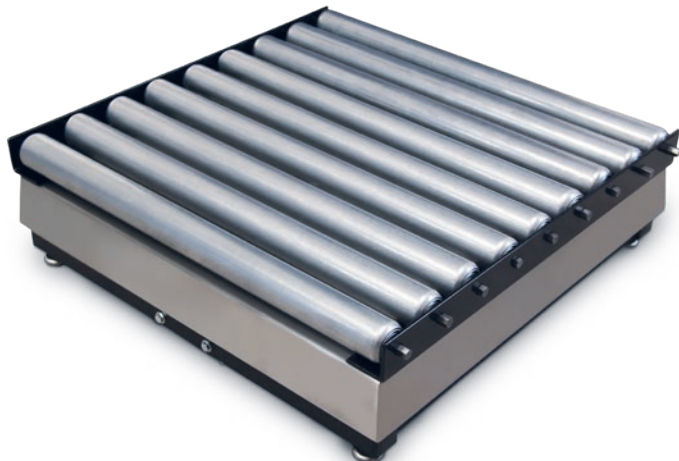
## Ball Transfer with Shroud

5. Construction of ball transfer
  - ☐ Steel ball, steel housing zinc finish
  - ☐ Stainless steel ball, stainless steel housing
6. Center-to-center ball dimension, if known:



## Roller Conveyor

8. Roller diameter, if known:
9. Center-to-center dimension, if known:
10. Construction of rollers
  - ☐ Plain steel
  - ☐ Galvanized steel
  - ☐ Aluminum
  - ☐ Stainless steel
7. Direction of roller conveyor, if platform is rectangular shaped (i.e., 18 × 24 in scale, please tell us if the rollers should be 18 in or 24 in long)



# Bench Scale Columns

BENCH SCALES

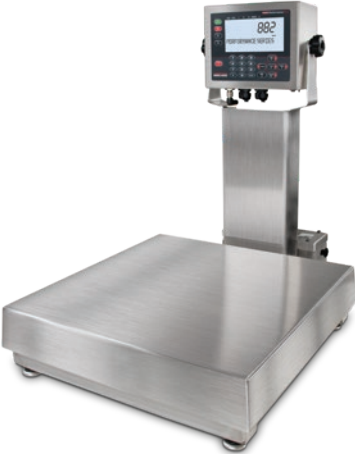
## Part Number/Price

Part #	Description	Price
112044	12 in column for IQ plus® 210, CW-90, CW-90X, 480/482 Legend Series, 380 Synergy Series, 680 Synergy Series	\$145.00
112045	18 in column for IQ plus® 210, CW-90, CW-90X, 480/482 Legend Series, 380 Synergy Series, 680 Synergy Series	\$195.00
196363	12 in column for 882IS/882IS Plus with battery	\$225.00
196364	18 in column for 882IS/882IS Plus with battery	\$275.00
197482	12 in column for 882IS/882IS Plus with power supply (Note: Power supply does not mount to column)	\$165.00
197484	18 in column for 882IS/882IS Plus with power supply (Note: Power supply does not mount to column)	\$215.00
64576	Attachment bracket for IQ plus® 210, CW-90, CW-90X, 480/482 Legend Series, 380 Synergy Series, 680 Synergy Series	\$100.00
216970	12 in column for 381 Synergy Indicator	\$145.00
216971	18 in column for 381 Synergy Indicator	\$195.00

Available for the BenchMark SL, BenchMark SL/HE, BenchMark Mild Steel, BenchMark Stainless Steel, BenchMark HE, BenchMark HE-X, CW-80B, CW-90B and CW90-XB



CW-90B with 480 indicator and 12in column



Base with 882IS/882IS Plus indicator with battery and 12in column



Attachment bracket with IQ Plus 2100



Base with 381 Synergy indicator and 12in column