

RL9000TWM-HT

Tank, Hopper and Vessel Weigh Module



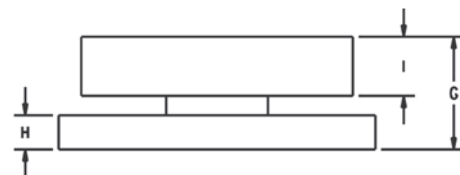
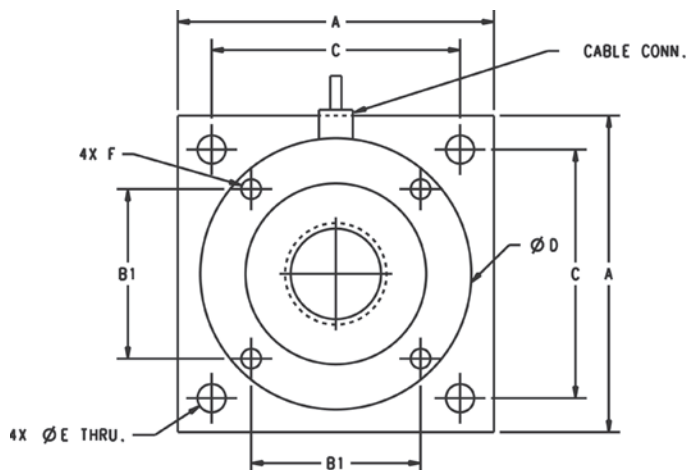
Picture is a representation of actual product.

Order Information

| Load Rating (per module) | Part # | Price |
|--|--------|---------|
| Single Module | | |
| 1,000 lb | 117050 | Consult |
| 2,500 lb | 117051 | Consult |
| 5,000 lb | 117052 | Consult |
| 10,000 lb | 117140 | Consult |
| 15,000 lb | 117053 | Consult |
| 20,000 lb | 117054 | Consult |
| 25,000 lb | 117055 | Consult |
| 35,000 lb | 117056 | Consult |
| 50,000 lb | 117057 | Consult |
| Top Plates (Stainless Steel) with bolts | | |
| 1,000 lb to 15,000 lb | 91207 | Consult |
| 20,000 lb to 50,000 lb | 91210 | Consult |
| Top Plates (Mild Steel) with bolts | | |
| 1,000 to 15,000 lb | 124758 | Consult |
| 20,000 to 50,000 lb | 125141 | Consult |

Dimensions

| Rated Capacity | A | B1 | C | D | E | F | G | H | I | Conduit Adapter |
|------------------|------|------|------|------|------|------------|------|-------|------|-----------------|
| 1,000 to 10,000 | 4.00 | 2.00 | 3.25 | 3.50 | 0.40 | 3/8-16 UNC | 1.35 | 0.375 | 0.75 | - |
| 15,000 | 4.00 | 2.00 | 3.25 | 3.50 | 0.40 | 3/8-16 UNC | 1.60 | 0.625 | 0.75 | - |
| 20,000 to 50,000 | 7.00 | 3.75 | 5.50 | 6.00 | 0.63 | 1/2-13 UNC | 2.48 | 0.750 | 1.30 | 1/2-14NPT |



Standard Features

- Capacities: 1,000 to 50,000 lb
- Stainless steel construction
- Very low profile design
- Self-centering
- Self-checking assembly
- Offers 100% side load, 100% uplift, 150% safe load and 300% ultimate overload protection
- Weighs accurately with up to 3° non-parallel load

Optional Features

- Stainless steel top plates
- Higher capacities available upon request

Applications

- Tank, hopper or vessel weighing
- High temperature applications

Specifications

Full Scale Output:

3.0 (± 0.1%) mV/V

Bridge Resistance:

700 ohm

Material/Finish:

Stainless steel

Operating Temperature:

0 °F to 400 °F (-17 °C to 204 °C)

Seal Type:

Welded seal, IP67

Safe Overload:

150% full scale

Insulation Resistance:

5,000 megohm

Non-linearity:

0.01% full scale

Non-repeatability:

0.02% full scale

Cable Length:

25 ft PTFE jacket

Deflection at Capacity:

1 to 15 K: 0.002 in
20 to 50 K: 0.004 in

Cable Color Code:

Green +Excitation
Black -Excitation
White +Signal
Red -Signal

Warranty:

Two-year limited