



NATIONAL TYPE EVALUATION PROGRAM

# Certificate of Conformance

for Weighing and Measuring Devices

**For:**

Indicating Element  
Digital Electronic  
Model: TracerAV2  
 $n_{max}$ : 10 000  
Accuracy Class: III / III L

**Submitted By:**

Rice Lake Weighing Systems  
230 West Coleman Street  
Rice Lake, WI 54868  
Tel: 715-234-9171  
Fax: 715-234-6967  
Contact: Jan Konijnenburg  
Email : [jkonijnenburg@ricelake.com](mailto:jkonijnenburg@ricelake.com)  
Web site : [www.ricelake.com](http://www.ricelake.com)

### Standard Features and Options

- Semi-Automatic (push button) Zero Setting Mechanism
- Automatic Zero Tracking (AZT)
- Initial Zero Setting Mechanism (IZSM)
- Category 2 sealing method (Physical-wire seal and Audit trail)
- Remote configuration capability
- Wireless communication
- ( 100 to 240 ) VAC
- AC to DC converting power supply
- Unit conversion key (lb, kg)
- External Printer
- RS 232, RS485, USB-C and ethernet communication ports
- Remote displays
- LCD Display
- Weight accumulation

This device was evaluated under the National Type Evaluation Program and was found to comply with the applicable technical requirements of "NIST Handbook 44: Specifications, Tolerances and Other Technical Requirements for Weighing and Measuring Devices." Evaluation results and device characteristics necessary for inspection and use in commerce are on the following pages.

Hal Prince  
Chairman, NCWM, Inc.

Craig VanBuren  
Committee Chair, National Type Evaluation Program Committee  
Issued: February 25, 2021

1135 M Street, Suite 110 / Lincoln, Nebraska 68508

The National Conference on Weights and Measures (NCWM) does not approve, recommend or endorse any proprietary product or material, either as a single item or as a class or group. Results shall not be used in advertising or sales promotion to indicate explicit or implicit endorsement of the product or material by the NCWM.



## Rice Lake Weighing Systems

Indicating Element / TracerAV2








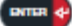
**Application:** A general purpose indicating element for use with any NTEP certified and compatible weighing element.

**Identification:** The required information appears on a self-destructive label on the indicating element housing. The capacity x division statement is on the face of the remote display adjacent to the weight display.

**Sealing:** The TracerAV2 has Category 2 sealing. There is a wire security seal that passes thru 3 cross drilled screws (see image in the Examples of Device section). This prevents removing the screw that blocks access to the configuration and calibration switch. It also prevents the indicator housing from being split in half and allowing access to the internal jumper that needs removed to make the calibration configuration switch active. There is an audit trail that documents configuration and calibration change see below on how to access.

### 3.4.4 View Audit Trail Counters

The audit trail calibration and configuration counters can be viewed in user mode.

1. Press . R.L.L. E displays.
2. Press . L.F.U displays.
3. Press . C.R.L. b.r displays.
4. Press . The audit trail calibration counter displays.
5. Press . C.R.L. b.r displays.
6. Press . C.O.N.F.I.G displays.
7. Press . The audit trail configuration counter displays.
8. Press  twice to return to weigh mode.

**Test Conditions:** The emphasis of the evaluation was on the device design, operation, marking requirements, performance, and compliance with influence factors. A Rice Lake model TracerAV2 was interfaced with a load receiving element to verify compliance with zero, zone of uncertainty and motion detection requirements. A load cell simulator was interfaced to the indicating elements and multiple increasing/decreasing tests were performed. The device was tested over a temperature range of -10° C to 40° C (14° F to 104° F). Tests were conducted using 85 VAC to 264 VAC. Weight accumulation and wireless communication were evaluated.

**Evaluated By:** J. Gibson (OH)

**Type Evaluation Criteria Used:** *NIST Handbook 44 Specifications, Tolerances, and Other Technical Requirements for Weighing and Measuring Devices*, 2020 Edition. *NCWM Publication 14 Weighing Devices*, 2021 Edition.

**Conclusion:** The results of the evaluation and information provided by the manufacturer indicate the device complies with applicable requirements.

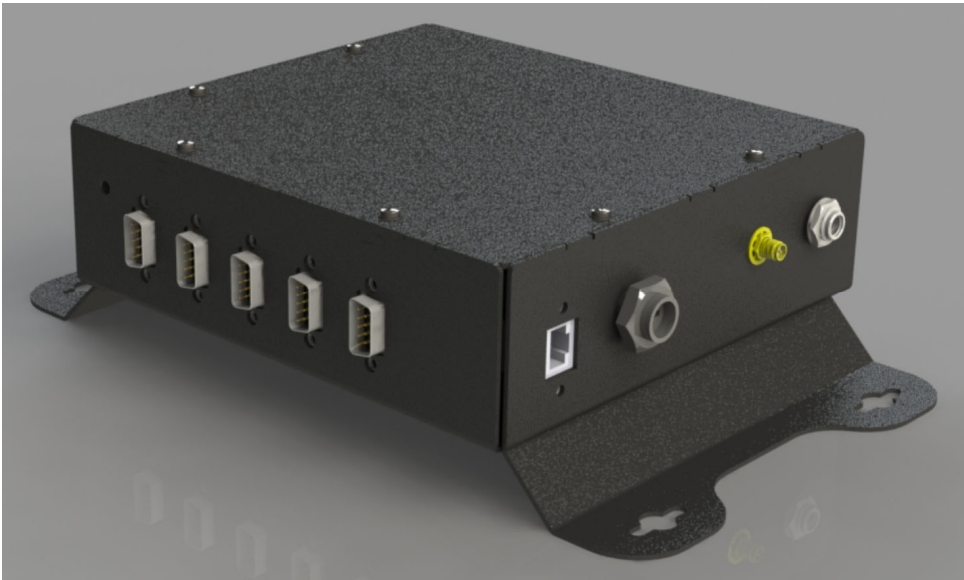
**Information Reviewed By:** D. Flocken (NCWM)



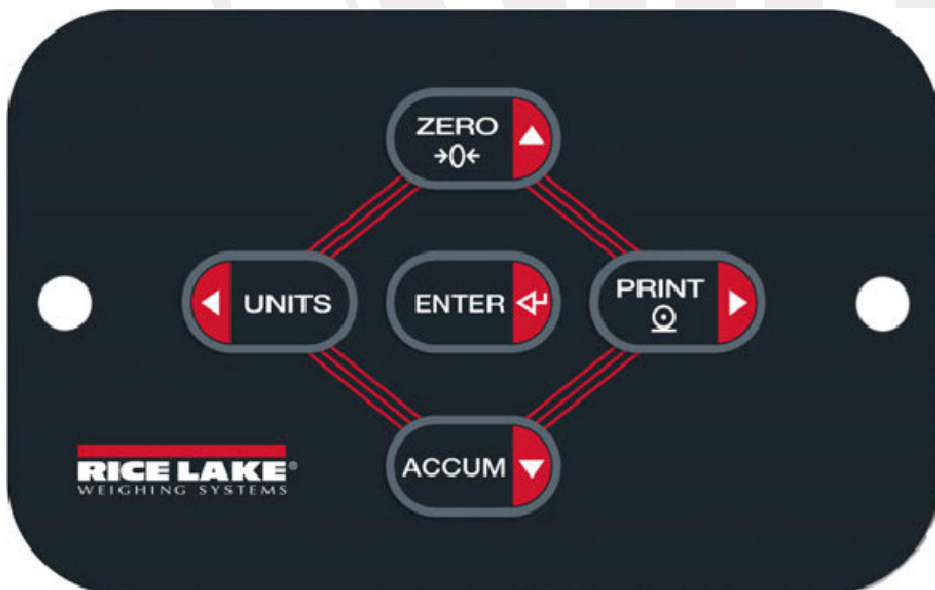
**Rice Lake Weighing Systems**  
Indicating Element / TracerAV2

**Example of Device:**

TracerAV2 Indicating element.



Keypad





**Rice Lake Weighing Systems**  
Indicating Element / TracerAV2

Remote Weight Display



Sealing the TracerAV2

