

# VPG Tedea-Huntleigh

## TABLE OF CONTENTS

### S-BEAMS

Page 305

#### 620, STAINLESS STEEL



Ideally suited for harsh environments, lever conversions, hopper/tanks, vibratory feeders, general purpose weighing and force measurement applications. The stainless steel, welded cavity design provides protection against water and corrosive materials. Capacities range from 500 to 2,000 kg. Complete with 5 m of load cell cable.



### SINGLE-ENDED

Page 306

#### 3411/3421, ALLOY STEEL AND STAINLESS STEEL



This family of high quality, single-ended beams is available in both alloy and stainless steel with NTEP Certification. These products are ideal for low-profile platforms, pallet truck weighers, tanks and silos. The durable stainless steel product offering is new and provides a solid choice for more demanding weighing applications. Both versions are available in capacities ranging from 1,000 lb to 10,000 lb. A standard 10 ft of load cell cable is provided.



Page 307

#### 3510-NTEP, STAINLESS STEEL



Low profile and all-welded sealing combined with high accuracy makes the 3510 ideally suited for low-profile platforms, weigh modules, tanks and silos. Hermetic sealing and polyurethane shielded cable enable this load cell to function in harsh environments while maintaining its operating specifications. Capacities range from 1,000 to 4,000 lb.



Page 308

#### 3510-OIML, STAINLESS STEEL



This 3510 is a 6,000 division OIML-approved single-ended beam. Low profile and all-welded sealing combined with high accuracy makes the 3510 ideally suited for low-profile platforms, weigh modules, tanks and silos. Polyurethane shielded cable enables this load cell to function in harsh environments while maintaining its operating specifications. Capacities range from 500 to 5,000 kg.



Page 309

#### 355, STAINLESS STEEL



Welded stainless steel construction, welded sealing and polyurethane shielded cable enables the 355 to function in harsh environments while maintaining its operating specifications. Suitable for low-profile platforms, weighing and packing machines, electromechanical conversions and general-purpose weighing applications. Capacities range from 5 to 500 kg.



### SINGLE POINT

Page 310

#### 1022, ALUMINUM



Very low profile, single-point load cell designed for direct mounting in low-cost platforms. Anodized aluminum construction is combined with two-beam machined technology to provide an affordable load cell option. Capacities range from 3 to 35 kg. Complete with 1.5 ft or 10 ft of load cell cable.



Page 311

#### 1010/1015, ALUMINUM



Off-center loading load cell designed for direct mounting of a weighing platform and simplified construction of platform scales. Long-term stability and durability are maintained. Load cells with potted cavities are available for improved performance in damp environments. The model 1015 has a balanced bridge for applications where multiple cells are used. Capacities range from 3 to 90 kg.



# VPG Tedea-Huntleigh

## SINGLE POINTS

Page 312

### 1030, ALUMINUM



This high-performance product is the standard in many of today's postal or price computing scales. This very low profile, three-beam single point load cell is insensitive to off-center loads, which is a critical element in providing accurate results. The 1030 is also coated with a unique humidity-resistant protective coating to assure long-term stability in harsh environments and extreme temperatures. This model is available in capacities ranging from 3 to 10 kg, and comes with 1 m of load cell cable.



Page 313

### 1042, ALUMINUM



A lower profile single point load cell for platform weighing. This model is constructed of aluminum and is a two-beam design. This design offers high immunity to side forces and is specially coated to provide humidity resistance. Capacities range from 1 to 100 kg. Complete with 10 ft of load cell cable.



Page 314

### 1040, ALUMINUM



Low-profile, off-center loading load cell. Designed for direct mounting of weighing platforms, hanging scales and other low capacity beam applications. Long-term stability and durability are maintained. Load cells with potted cavities are available for improved performance in damp environments. Capacities range from 5 to 100 kg.



Page 315

### 1130, STAINLESS STEEL



The 1130 is a stainless steel, single-point load cell that is designed for high performance in harsh environments. This product is primarily designed for platform weighing but is cost-effective to make it an appropriate selection for numerous applications. Capacities range from 7.5 to 100 kg and is provided complete with 1.5 m, 3 m or 25 ft of load cell cable.



Page 316

### 1140, STAINLESS STEEL



Low-profile, off-center loading load cell designed for direct mounting of weighing platforms, hanging scales and other low capacity beam applications. Stainless steel construction and a unique humidity-resistant protective coating provide long-term stability, even in harsh environments. Load cells with potted cavities are available for improved performance in damp environments. Capacities range from 15 to 150 kg.



Page 317

### 1240, STAINLESS STEEL



The 1240 is a low-profile single point load cell that is compact in design, considering the 200 and 250 kg capacity range. This cell is ideally suited for light-industrial or people-weighing applications where overall deck height is a concern. The three-beam design makes the load cell less likely to be impacted by side forces and mounting imperfections. It features stainless steel construction and humidity-resistant coating for use in harsh environments with extreme temperatures. Each unit is provided with 10 ft of load cell cable.



## SINGLE POINTS

Page 318

### 1142, STAINLESS STEEL



Its small physical size, combined with high accuracy and low cost make the 1142 the perfect selection for new or retrofit scales. Stainless steel construction along with a humidity-resistant protective coating helps ensure stable operation in damp environments. The 1142 is NTEP Certified and is available with OIML approval. It comes with 10 ft of load cell cable. Capacities range from 10 to 150 kg.



Page 319

### 1260, ALUMINUM



High capacity, off-center loading aluminum single-point load cell. This model is of the two-beam design, and is specially coated to assure durability in harsh environments. Capacities range from 50 to 635 kg. Complete with 10 ft of load cell cable.



Page 320

### 1260S, ALUMINUM



This single-point, off-center loading, aluminum load cell is designed for high-capacity applications and harsh environments. NTEP Certified to 10,000 divisions. Capacities range from 75 to 635 kg. Complete with 10 ft of load cell cable.



Page 321

### 1263, ALUMINUM



The rugged construction of the 1263 offers high immunity to side loads, making it suitable for a wide array of applications like bench scales and process weighing. Its special humidity resistant protective coating helps assure long-term stability over the entire compensated range. It is constructed of high quality aluminum and comes standard with 1.5 meters of load cell cable. The 1263 is available in capacities from 50 to 635 kg and is OIML approved.



Page 322

### 1250, ALUMINUM



High capacity, off-center loading load cell accurately weighs loads from 50 to 1,000 kg. Long-term stability and durability are maintained. Load cells with potted cavities are available for improved performance in damp environments.



Page 323

### 1320, ALUMINUM



Model 1320 is a high capacity single-point load cell. Direct mounting of low-profile platforms simplifies the construction of floor scales, weigh bars, hanging scales and other types of weighing devices. Individually adjusted to eliminate corner errors. Capacities range from 1,000 to 2,000 kg.



# VPG Tedea-Huntleigh

Page 324

## 1510, STAINLESS STEEL



The 1510 is a stainless steel, welded-seal cell ideally suited for washdown applications. Capacities range from 100 to 500 kg.



Page 325

## 240, ALLOY STEEL/STAINLESS STEEL, FLUID DAMPED



These load cells decrease weighing time and improve weighing accuracy in high-speed weighing applications. Since damping also protects the cells from shock and vibration, the load cell can endure harsh conditions, such as those encountered in repeated shock-loading applications. This also enables damped load cells to last longer than undamped load cells in any application. The cells are sealed, protecting them in washdown situations. Capacities range from 2 to 50 kg.



Page 326

## 9010, ALUMINUM, FLUID DAMPED



Model 9010 is a self-contained weighing module for use in repeated shock-loading applications or where fast weighing and settling times are required. Each is custom manufactured per specific application requirements. Capacities range from 3 to 50 kg.



PLANAR BEAM

Page 327

## 380, ALUMINUM



Model 380 is a very low profile planar beam design, allowing direct mounting in low profile platform scales. The range of capacities and low profile makes model 380 most suitable for use in applications with space constraints.



COMPRESSION CANISTER

Page 328

## 220, STAINLESS STEEL



Model 220 is a low profile, bending ring load cell designed for high capacity weighing applications, including weighbridges, tanks, silos, high capacity platform scales and force measurement. OIML approved.



Page 329

## 120, STAINLESS STEEL



The model 120 is a stainless steel, welded-seal canister offered in capacities from 20,000 to 50,000 kg and includes load cup and load pin.

Page 330

## VPG® TEDEA-HUNTLEIGH MODEL 9010 APPLICATION DEFINITION FORM



Picture is a representation of actual product

**Approvals**



Available upon request

Available upon request

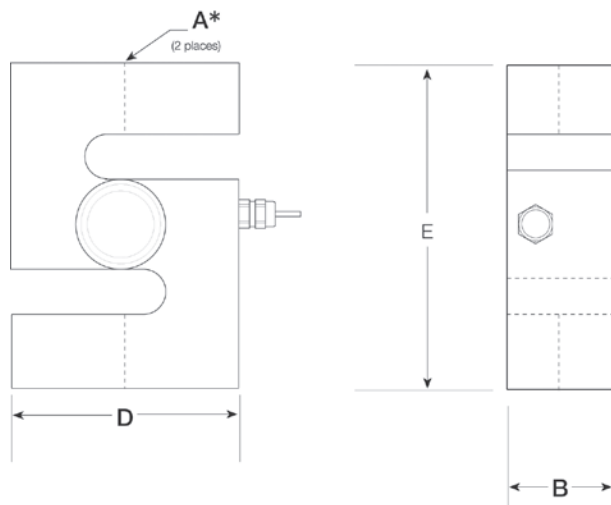
**Order Information**

Load Rating	Part #	Est. Weight	Price
500 kg	<b>36389</b>	4 lb	\$689.00
1,000 kg	<b>36390</b>	4 lb	\$689.00
2,000 kg	<b>36391</b>	4 lb	\$689.00

**Dimensions**

Rated Capacity	A*	B	D	E
kg/mm				
500 to 1,000	1/2-20 UNF	33.5	73.2	94.0
2,000	3/4-16 UNF	33.5	73.2	94.0

Metric threads available



**Weigh Module Available**

RICE LAKE WEIGHING SYSTEMS

**ITCM Isolated Tension**

**Cell Mount**..... page 28

**Specifications**

**Full Scale Output:**

2.0 mV/V

**Output Resistance:**

350 (± 3) ohm

**Input Resistance:**

400 (± 20) ohm

**Material/Finish:**

Stainless steel

**Temperature:**

Compensated range

14 °F to 104 °F (-10 °C to 40 °C)

Operating range

0 °F to 150 °F (-18 °C to 65 °C)

**Seal Type:**

Welded-seal, IP68

**Safe Overload:**

150% full scale

**Rated Excitation:**

5 to 10 VDC (15 V maximum)

**Combined Error:**

0.02% full scale

**Insulation Resistance:**

1,000 megohm

**Cable Length:**

5 m

**Cable Diameter:**

0.220 in

Polyurethane jacket

**Cable Color Code:**

Blue +Excitation

Black -Excitation

White +Signal

Red -Signal

Green +Sense

Grey -Sense

**Warranty:**

One-year limited

**Approvals:**

cFMus

NTEP

Ex (Available upon request)

OIML (Available upon request)

VPG  
TEDEA-HUNTLEIGH

# 3411/3421

Alloy/Stainless Steel, Environmentally Sealed, NTEP Certified 1:3,000 Single Cell, 1:5,000 Multiple Cell Class III, IP67



Picture is a representation of actual product

### Approvals



Available upon request

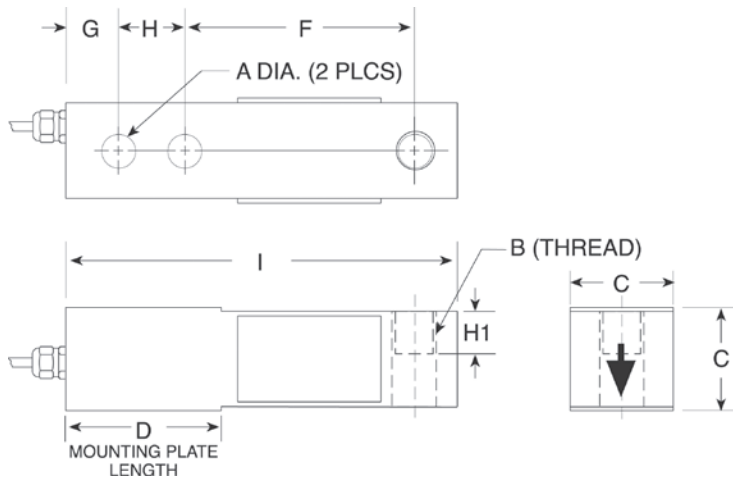
Available upon request

### Order Information

Load Rating	Part #	Est. Weight	Price
<b>Alloy Steel</b>			
1,000 lb	29903	3 lb	\$312.00
2,500 lb	29904	3 lb	\$312.00
4,000 lb	29905	3 lb	\$312.00
5,000 lb	29906	4 lb	\$397.00
10,000 lb	29907	4 lb	\$397.00
<b>Stainless Steel</b>			
1,000 lb	47871	3 lb	\$371.00
2,500 lb	47872	3 lb	\$371.00
4,000 lb	47873	3 lb	\$350.00
5,000 lb	47874	4 lb	\$445.00
10,000 lb	47875	4 lb	\$471.00

### Dimensions

Rated Capacity	A	B	C	D	F	G	H	H1	I
lb/in									
1,000 to 4,000	0.53	1/2-20 UNF	1.24	2.25	3.00	0.63	1.00	0.60	5.12
5,000 to 10,000	0.78	3/4-16 UNF	1.49	3.00	3.75	0.75	1.50	0.75	6.75



### Interchangeable Products

- RICE LAKE WEIGHING SYSTEMS  
**RL30000I**.....page 108
- RICE LAKE WEIGHING SYSTEMS  
**RL39123\***.....page 111
- VPG® REVERE  
**5123**.....page 246
- VPG® REVERE  
**9123\***.....page 247

### Weigh Module Available

- RICE LAKE WEIGHING SYSTEMS  
**RL50210TA**.....page 31
- RICE LAKE WEIGHING SYSTEMS  
**RL1800 Series**.....page 42

\*Stainless steel

### Specifications

- Full Scale Output:**  
3.0 mV/V
- Output Resistance:**  
351 (± 5) ohm
- Input Resistance:**  
385 (± 10) ohm
- Material/Finish:**  
High-alloy, nickel plated  
Stainless steel
- Temperature:**  
Compensated range  
14 °F to 104 °F (-10 °C to 40 °C)  
Operating range  
0 °F to 150 °F (-18 °C to 65 °C)
- Seal Type:**  
Environmentally sealed, IP67
- Safe Overload:**  
150% full scale
- Safe Sideload:**  
100% full scale
- Rated Excitation:**  
5 to 10 VDC (15 V maximum)
- Combined Error:**  
0.03% full scale
- Insulation Resistance:**  
2,000 megohm
- Deflection at Capacity:**  
0.015 in
- Cable Length:**  
10 ft
- Cable Diameter:**  
0.200 in  
PVC jacket
- Cable Color Code:**  
Red +Excitation  
Black -Excitation  
Green +Signal  
White -Signal  
Blue +Sense  
Brown -Sense
- Warranty:**  
One-year limited
- Approvals:**  
cFMus  
NTEP  
Ex (Available upon request)  
OIML (Available upon request)

TEDEA-HUNTLEIGH  
VPG



Picture is a representation of actual product

**Approvals**

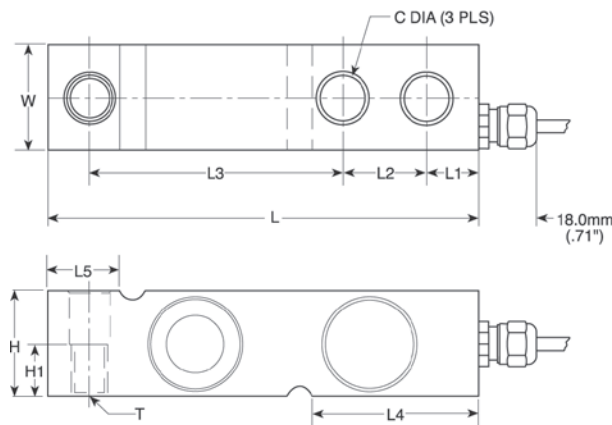


**Order Information**

Load Rating	Part #	Est. Weight	Price
1,000 lb	<b>36458</b>	3 lb	\$515.00
1,500 lb	<b>36459</b>	3 lb	\$515.00
2,500 lb	<b>36460</b>	3 lb	\$515.00
4,000 lb	<b>36461</b>	3 lb	\$515.00

**Dimensions**

Rated Capacity	C	C1	H	H1	L	L1	L2	L3	L4	L5	T	W
lb/in												
1,000 to 4,000	0.53	0.53	1.26	0.63	5.12	0.62	1.00	3.00	1.97	0.91	1/2-14 UNF	1.26



**Interchangeable Products**

- VPG® SENSORTRONICS  
**65083**..... page 284
- VPG® CELTRON  
**SQB-HSS**..... page 192

**Weigh Module Available**

- RICE LAKE WEIGHING SYSTEMS  
**RL1700 HE**..... page 23

**Specifications**

- Full Scale Output:**  
3.0 mV/V
- Output Resistance:**  
350 (± 3) ohm
- Input Resistance:**  
415 (± 15) ohm
- Material/Finish:**  
Stainless steel
- Temperature:**  
Compensated range  
14 °F to 104 °F (-10 °C to 40 °C)  
Operating range  
0 °F to 150 °F (-18 °C to 65 °C)
- Seal Type:**  
Welded-seal, IP68
- Safe Overload:**  
150% full scale
- Safe Sideload:**  
100% full scale
- Rated Excitation:**  
5 to 10 VDC (15 V maximum)
- Combined Error:**  
0.02% full scale
- Insulation Resistance:**  
1,000 megohm
- Deflection at Capacity:**  
0.015 in
- Cable Length:**  
5 m
- Cable Diameter:**  
0.220 in  
Polyurethane jacket
- Cable Color Code:**  
Blue +Excitation  
Black -Excitation  
White +Signal  
Red -Signal  
Green +Sense  
Gray -Sense
- Warranty:**  
One-year limited
- Approvals:**  
cFMus  
NTEP

VPG  
TEDEA-HUNTLEIGH

SINGLE-ENDED BEAM  
**3510-OIML**

Stainless Steel, Welded Seal, OIML C3, IP68



Picture is a representation of actual product

Approvals



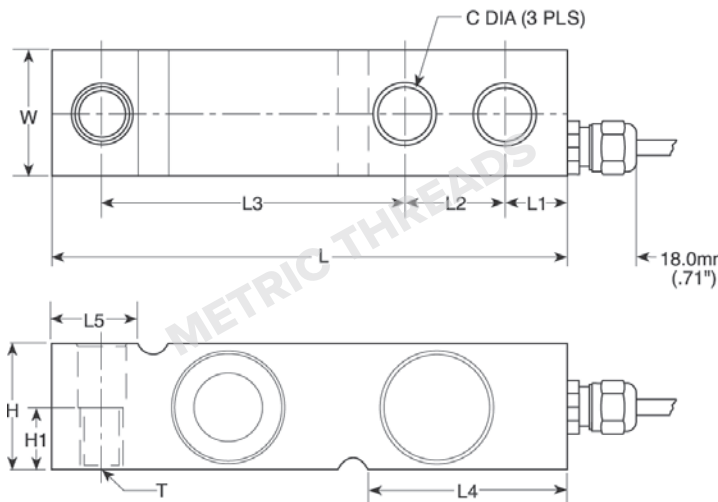
Available upon request

Order Information

Load Rating	Part #	Est. Weight	Price
500 kg	30161	3 lb	\$514.00
1,000 kg	30162	3 lb	\$514.00
2,000 kg	30163	3 lb	\$514.00
5,000 kg	30164	5 lb	\$514.00

Dimensions

Rated Capacity	C	C1	H	H1	L	L1	L2	L3	L4	L5	T	W
kg/mm												
500 to 2,000	13.5	13.5	32.0	16.0	130.0	15.8	25.4	76.2	50.5	23.5	M12 × 1.75 Thrd.	32.0
5,000	20.5	20.5	48.0	—	171.5	19.0	38.1	95.3	70.0	37.0	—	36.5



Interchangeable Products

RICE LAKE WEIGHING SYSTEMS  
**RLHTO** .....page 115

Weigh Module Available

RICE LAKE WEIGHING SYSTEMS  
**RL1700 HE** ..... page 23

Specifications

- Full Scale Output:**  
2.0 mV/V
- Output Resistance:**  
350 (± 3) ohm
- Input Resistance:**  
380 (± 10) ohm
- Material/Finish:**  
Stainless steel
- Temperature:**  
Operating range  
0 °F to 150 °F (-18 °C to 65 °C)
- Seal Type:**  
Welded-seal, IP68
- Safe Overload:**  
150% full scale
- Safe Sideload:**  
100% full scale
- Rated Excitation:**  
5 to 10 VDC (15 V maximum)
- Combined Error:**  
0.02% full scale
- Insulation Resistance:**  
2,000 megohm
- Deflection at Capacity:**  
0.015 in
- Cable Length:**  
5 m
- Cable Diameter:**  
0.220 in  
Polyurethane jacket
- Cable Color Code:**  
Blue +Excitation  
Black -Excitation  
White +Signal  
Red -Signal  
Green +Sense  
Gray -Sense
- Warranty:**  
One-year limited
- Approvals:**  
cFMus  
OIML  
Ex (Available upon request)

TEDEA-HUNTLEIGH  
VPG





Picture is a representation of actual product

Approvals



Available upon request

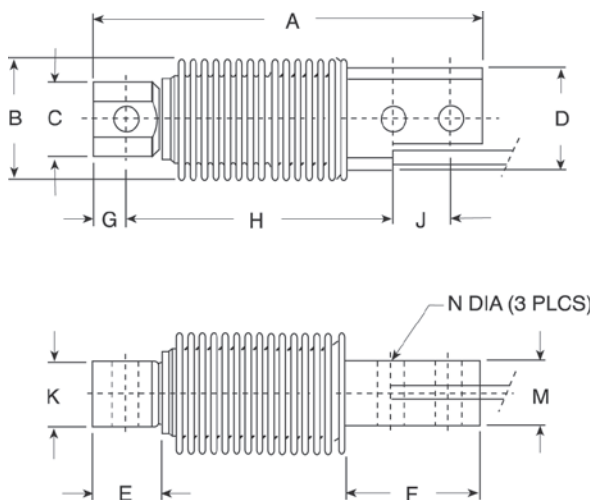
Available upon request

Order Information

Load Rating	Part #	Est. Weight	Price
5 kg	30165	2 lb	\$556.00
10 kg	30166	2 lb	\$556.00
20 kg	30167	2 lb	\$556.00
50 kg	30168	2 lb	\$556.00
100 kg	30169	2 lb	\$556.00
200 kg	30170	2 lb	\$556.00
500 kg	36463	2 lb	\$556.00

Dimensions

Rated Capacity	A	B	C	D	E	F	G	H	J	K	M	N
kg/mm												
5 to 500	120.0	40.0	23.0	32.0	20.5	45.5	10.0	82.0	18.0	20.0	20.0	8.2



Interchangeable Products

- RICE LAKE WEIGHING SYSTEMS  
**RL9018SS** ..... page 107
- RICE LAKE WEIGHING SYSTEMS  
**RLHBB**
- VPG® REVERE  
**SHB** ..... page 253
- HBM®  
**Z6** ..... page 226

Weigh Module Available

- RICE LAKE WEIGHING SYSTEMS  
**RL1700 HE** ..... page 23

Specifications

- Full Scale Output:**  
2.0 mV/V
- Output Resistance:**  
355 (± 5) ohm
- Input Resistance:**  
380 (± 10) ohm
- Material/Finish:**  
Stainless steel
- Temperature:**  
Compensated range  
14 °F to 104 °F (-10 °C to 40 °C)  
Operating range  
0 °F to 150 °F (-18 °C to 65 °C)
- Seal Type:**  
Welded-seal, IP68
- Safe Overload:**  
150% full scale
- Rated Excitation:**  
5 to 10 VDC (15 V maximum)
- Combined Error:**  
0.02% full scale
- Insulation Resistance:**  
2,000 megohm
- Deflection at Capacity:**  
0.015 in
- Cable Length:**  
10 ft
- Cable Diameter:**  
0.220 in  
Polyurethane jacket
- Cable Color Code:**  
Blue +Excitation  
Black -Excitation  
White +Signal  
Red -Signal  
Green +Sense  
Grey -Sense
- Warranty:**  
One-year limited
- Approvals:**  
cFMus  
NTEP  
Ex (Available upon request)  
OIML (Available upon request)

VPG  
TEDEA-HUNTLEIGH



Picture is a representation of actual product

**Approvals**



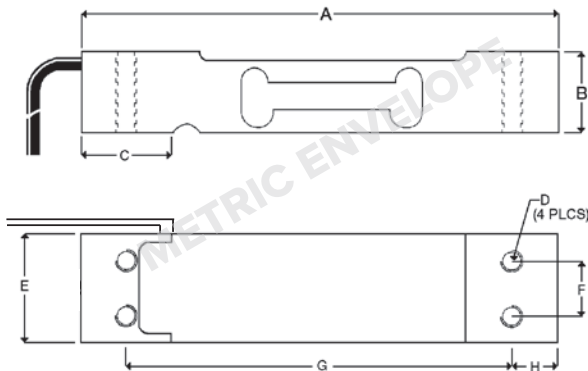
Available upon request

**Order Information**

Load Rating	Part #	Est. Weight	Price
<b>1.5 ft Cables</b>			
3 kg	41135	2 lb	\$148.00
5 kg	41136	2 lb	\$148.00
7 kg	41137	2 lb	\$148.00
10 kg	41138	2 lb	\$148.00
15 kg	41139	2 lb	\$148.00
20 kg	41140	2 lb	\$148.00
30 kg	41141	2 lb	\$148.00
35 kg	41142	2 lb	\$148.00
<b>10 ft Cables</b>			
3 kg	132269	2 lb	\$148.00
5 kg	132270	2 lb	\$148.00
7 kg	132271	2 lb	\$148.00
10 kg	132272	2 lb	\$148.00
15 kg	132273	2 lb	\$148.00
20 kg	132274	2 lb	\$148.00
30 kg	132275	2 lb	\$148.00
35 kg	132276	2 lb	\$148.00
<b>1.5 ft Cables</b>			
10 kg	150770	2 lb	\$148.00
15 kg	150771	2 lb	\$148.00
20 kg	150772	2 lb	\$148.00
30 kg	150773	2 lb	\$148.00

**Dimensions**

Rated Capacity	A	B	C	D	E	F	G	H
kg/mm								
3 to 7	130.0	22.0	25.0	M6 × 1.0	25.4	15.0	106.0	12.0
10 to 30	130.0	22.0	25.0	M6 × 1.0	30.0	15.0	106.0	12.0
35	130.0	22.0	25.0	M6 × 1.0	40.0	15.0	106.0	12.0



**Interchangeable Products**

RICE LAKE WEIGHING SYSTEMS

**RL1521A**..... page 156

VPG® CELTRON

**LPS**..... page 197

VPG® BLH

**C2G1**

NMB®

**C2G1**

**Specifications**

**Full Scale Output:**

2.0 mV/V

**Output Resistance:**

350 (± 3) ohm

**Input Resistance:**

415 (± 15) ohm

**Material/Finish:**

Anodized aluminum

**Temperature:**

Compensated range

14 °F to 104 °F (-10 °C to 40 °C)

Operating range

0 °F to 150 °F (-18 °C to 65 °C)

**Seal Type:**

Environmentally sealed, IP66

**Safe Overload:**

150% full scale

**Rated Excitation:**

5 to 10 VDC (15 V maximum)

**Combined Error:**

0.02% full scale

**Insulation Resistance:**

2,000 megohm

**Cable Length:**

10 ft

1.5 ft

**Cable Diameter:**

0.140 in PVC jacket

**Cable Color Code:**

Green +Excitation

Black –Excitation

Red +Signal

White –Signal

**Platform Size:**

13.78 × 13.78 in

**Warranty:**

One-year limited

**Approvals:**

cFMus

NTEP

OIML

Ex (Available upon request)

TEDEA-HUNTLEIGH VPG



Picture is a representation of actual product

**Approvals**



**Order Information**

Load Rating	Part #	Est. Weight	Price
<b>1010 NTEP Certified, Potted</b>			
10 kg	33727	2 lb	\$207.00
15 kg	33728	2 lb	\$207.00
20 kg	33729	2 lb	\$207.00
30 kg	33730	2 lb	\$207.00
50 kg	33731	2 lb	\$207.00
<b>1010 Non-NTEP Certified, Potted</b>			
5 kg	17462	2 lb	\$207.00
7 kg	17463	2 lb	\$207.00
10 kg	17464	2 lb	\$207.00
20 kg	17482	2 lb	\$207.00
30 kg	17475	2 lb	\$207.00
50 kg	17476	2 lb	\$207.00
90 kg	17471	2 lb	\$207.00
<b>1010 NTEP Certified, Unpotted</b>			
5 kg	33732	2 lb	\$190.00
7 kg	33733	2 lb	\$190.00
<b>1010 Non-NTEP Certified, Unpotted</b>			
3 kg	17481	1.2 lb	\$190.00
<b>1015 NTEP Certified, Potted</b>			
5 kg	188805	2 lb	\$222.00
7 kg	188806	2 lb	\$222.00
10 kg	188807	2 lb	\$222.00
15 kg	188808	2 lb	\$222.00
20 kg	188809	2 lb	\$222.00
30 kg	188810	2 lb	\$222.00
50 kg	188811	2 lb	\$222.00
<b>1015 Non-NTEP Certified, Potted</b>			
3 kg	188804	1.2 lb	\$222.00
90 kg	188812	2 lb	\$222.00

Note: Model 1015 has M6 metric threads

**Dimensions**

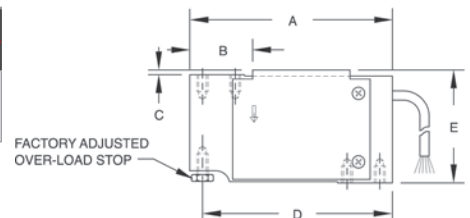
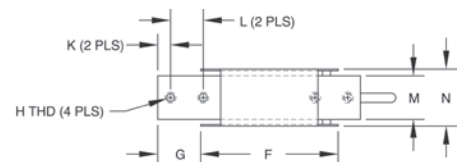
Rated Capacity	A	B	C	D	E	F	G	H	K	L	M	N
kg/mm												
3 to 90	118.0	34.0	3.0	110.5	66.0	80.0	25.0	(1010) 1/4-20 UNC x 13 DP (1015) M6 Metric	7.5	19.1	25.4	33.5

**Interchangeable Products**

RICE LAKE WEIGHING SYSTEMS  
RL1010..... page 157

**Specifications**

- Full Scale Output:** 2.0 mV/V
- Output Resistance:** 350 (± 3) ohm
- Input Resistance:** Model 1010: 415 (± 15) ohm  
Model 1015: 350 (± 3) ohm
- Material/Finish:** Aluminum
- Temperature:** Compensated range 14 °F to 104 °F (-10 °C to 40 °C)  
Operating range 0 °F to 150 °F (-18 °C to 65 °C)
- Seal Type:** Environmentally sealed  
Potted: IP67  
Unpotted: IP65
- Safe Overload:** 150% at center of loading point, full scale
- Rated Excitation:** 5 to 10 VDC (15 V maximum)
- Combined Error:** 0.02% full scale
- Deflection at Capacity:** 0.015 in
- Cable Length:** 10 ft
- Cable Diameter:** 0.200 in PVC jacket
- Cable Color Code:** Green +Excitation  
Black -Excitation  
Red +Signal  
White -Signal  
Blue +Sense  
Brown -Sense
- Platform Size:** 15.75 x 15.75 in
- Warranty:** One-year limited
- Approvals:** cFMus  
NTEP



VPG  
TEDEA-HUNTLEIGH



Picture is a representation of actual product

### Approvals

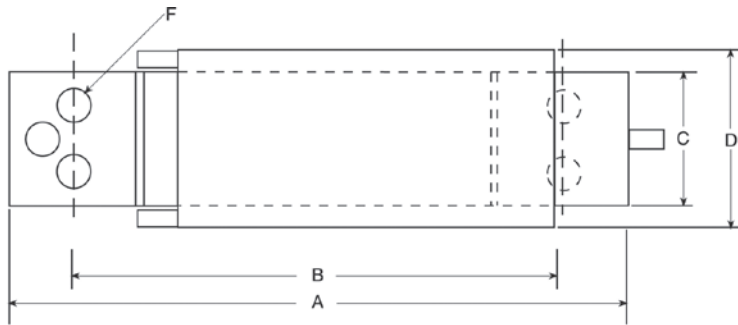


### Order Information

Load Rating	Part #	Est. Weight	Price
3 kg	47882	1 lb	\$280.00
5 kg	47883	1 lb	\$280.00
7 kg	47884	1 lb	\$280.00
10 kg	47885	1 lb	\$280.00

### Dimensions

Rated Capacity	A	B	C	D	E	F
kg/mm						
3 to 10	117.9	93.7	25.4	33.3	32.5	1/4-20UNC x 10DP



### Specifications

**Full Scale Output:**

2.0 mV/V

**Output Resistance:**

350 (± 3) ohm

**Input Resistance:**

415 (± 15) ohm

**Material/Finish:**

Anodized aluminum

**Temperature:**

Operating range  
0 °F to 150 °F (-18 °C to 65 °C)

**Seal Type:**

Environmentally sealed, IP65

**Safe Overload:**

150% full scale

**Rated Excitation:**

5 to 10 VDC (15 V maximum)

**Combined Error:**

0.02% full scale

**Insulation Resistance:**

5,000 megohm

**Deflection at Capacity:**

0.015 in

**Cable Length:**

1 m

**Cable Diameter:**

0.200 in PVC jacket

**Cable Color Code:**

Green +Excitation  
Black -Excitation  
Red +Signal  
White -Signal  
Blue +Sense  
Brown -Sense

**Platform Size:**

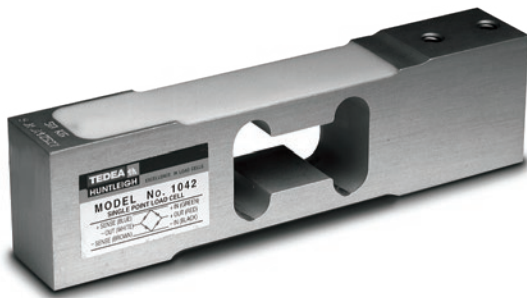
13.78 x 13.78 in

**Warranty:**

One-year limited

**Approvals:**

cFMus  
OIML



Picture is a representation of actual product

**Approvals**



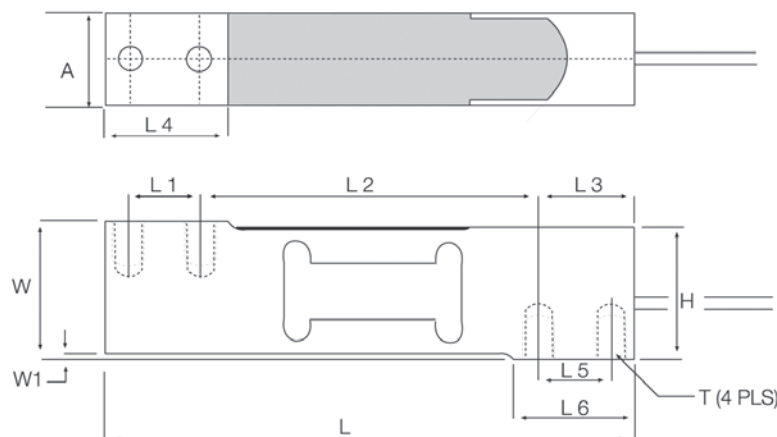
Available upon request

**Order Information**

Load Rating	Part #	Est. Weight	Price
1 kg	40680	2 lb	\$190.00
3 kg	40681	2 lb	\$190.00
5 kg	40682	2 lb	\$190.00
10 kg	40683	2 lb	\$190.00
15 kg	40684	2 lb	\$190.00
20 kg	40685	2 lb	\$190.00
30 kg	40686	2 lb	\$190.00
50 kg	40687	2 lb	\$190.00
75 kg	40688	2 lb	\$190.00
100 kg	40689	2 lb	\$190.00

**Dimensions**

Rated Capacity	A	H	L	L1	L2	L3	L4	L5	L6	W	W1	T
kg/mm												
1 to 30	20.0	39.0	150.0	19.0	100.0	25.0	34.0	19.0	34.0	40.0	1.0	1/4-20 UNC
50 to 100	25.2	39.0	150.0	19.0	100.0	25.0	34.0	19.0	34.0	40.0	1.0	1/4-20 UNC



**Interchangeable Products**

- RICE LAKE WEIGHING SYSTEMS  
**RL1042**.....page 161
- RICE LAKE WEIGHING SYSTEMS  
**RL42018A**.....page 170

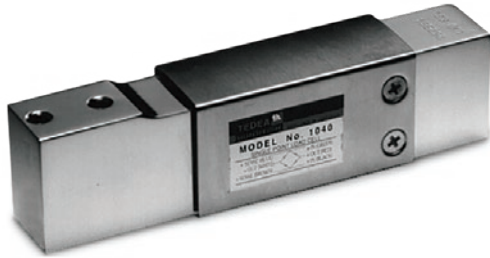
**Specifications**

- Full Scale Output:**  
2.0 mV/V
- Output Resistance:**  
350 (± 3) ohm
- Input Resistance:**  
415 (± 15) ohm
- Material/Finish:**  
Aluminum
- Temperature:**  
Compensated range  
14 °F to 104 °F (-10 °C to 40 °C)  
Operating range  
0 °F to 150 °F (-18 °C to 65 °C)
- Seal Type:**  
Environmentally sealed, IP66
- Safe Overload:**  
150% full scale
- Rated Excitation:**  
5 to 10 VDC (15 V maximum)
- Combined Error:**  
0.02% full scale
- Deflection at Capacity:**  
0.015 in
- Insulation Resistance:**  
2,000 megohm
- Cable Length:**  
10 ft
- Cable Diameter:**  
0.200 in PVC jacket
- Platform Size:**  
16 × 16 in
- Cable Color Code:**  
Green +Excitation  
Black –Excitation  
Red +Signal  
White –Signal  
Blue +Sense  
Brown –Sense
- Warranty:**  
One-year limited
- Approvals:**  
NTEP  
cFMus  
OIML (Available upon request)

VPG  
TEDEA-HUNTLEIGH

# 1040

Aluminum, Environmentally Sealed, NTEP Certified 1:5,000 Class III Single Cell, IP65



Picture is a representation of actual product

### Approvals



Available upon request

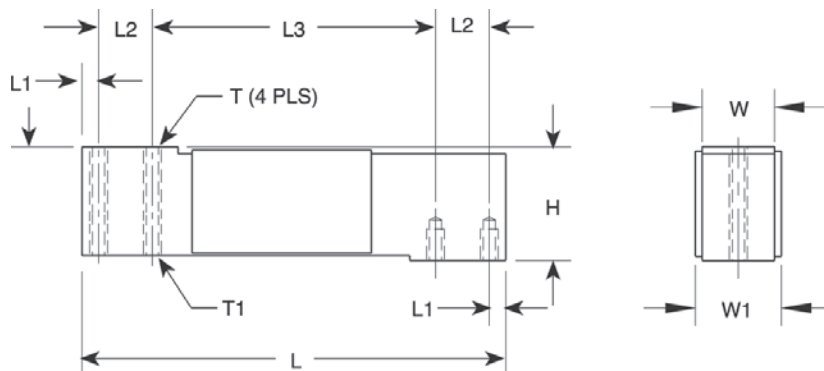
Available upon request

### Order Information

Load Rating	Part #	Est. Weight	Price
<b>NTEP Certified, Potted</b>			
10 kg	33719	2 lb	\$207.00
15 kg	33720	2 lb	\$207.00
20 kg	33721	2 lb	\$207.00
30 kg	33722	2 lb	\$207.00
50 kg	33723	2 lb	\$207.00
100 kg	33724	2 lb	\$207.00
<b>Non-NTEP Certified, Potted</b>			
5 kg	17449	2 lb	\$200.00
7 kg	17483	2 lb	\$200.00
<b>NTEP Certified, Unpotted</b>			
7 kg	33726	2 lb	\$200.00

### Dimensions

Rated Capacity	H	L	L1	L2	L3	T	T1	W	W1
kg/mm									
5 to 100	40.0	150.0	6.0	19.1	100.0	1/4-20 UNC × 10 DP	1/4-28 UNF × 10 DP	25.4	29.4



### Interchangeable Products

RICE LAKE WEIGHING SYSTEMS

**RL1040** ..... page 162

METTLER TOLEDO®

**0785**

CARDINAL®

**TSP**

### Specifications

**Full Scale Output:**

2.0 mV/V

**Output Resistance:**

350 (± 3) ohm

**Input Resistance:**

415 (± 15) ohm

**Material/Finish:**

Anodized aluminum

**Temperature:**

Compensated range

14 °F to 104 °F (-10 °C to 40 °C)

Operating range

0 °F to 150 °F (-18 °C to 65 °C)

**Seal Type:**

Environmentally sealed, IP65

**Safe Overload:**

200% at center loading point, full scale

**Rated Excitation:**

5 to 10 VDC (15 V maximum)

**Combined Error:**

0.02% full scale

**Insulation Resistance:**

2,000 megohm

**Deflection at Capacity:**

0.015 in

**Cable Length:**

10 ft

**Cable Diameter:**

0.200 in PVC jacket

**Cable Color Code:**

Green +Excitation

Black -Excitation

Red +Signal

White -Signal

Blue +Sense

Brown -Sense

**Platform Size:**

15.75 × 15.75 in

**Warranty:**

One-year limited

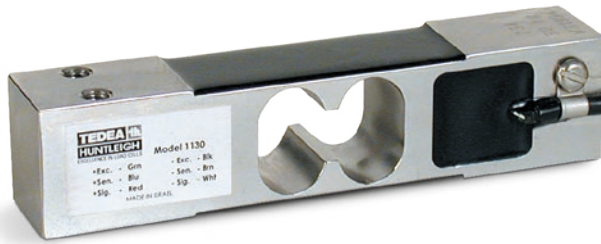
**Approvals:**

cFMus

NTEP

Ex (Available upon request)

OIML (Available upon request)



Picture is a representation of actual product

Approvals



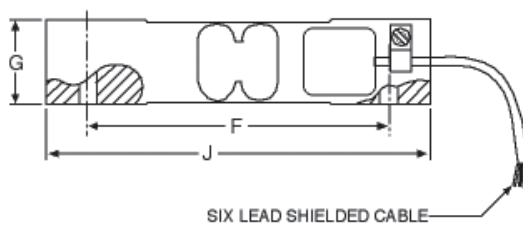
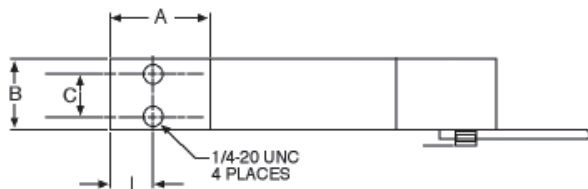
Order Information

Load Rating	Part #	Est. Weight	Price
<b>1.5 m Cable</b>			
7.5 kg	53485	2 lb	\$270.00
10 kg	112374	2 lb	\$270.00
15 kg	53486	2 lb	\$270.00
30 kg	53487	2 lb	\$270.00
50 kg	53488	2 lb	\$270.00
100 kg*	53490	2 lb	\$270.00
<b>3 m Cable</b>			
7.5 kg	111381	2 lb	\$280.00
10 kg	112365	2 lb	\$280.00
15 kg	114132	2 lb	\$280.00
30 kg	114133	2 lb	\$280.00
<b>25 ft Cable Trimmed Outputs</b>			
15 kg	124512	2 lb	\$315.00
30 kg	124513	2 lb	\$315.00

\*Non-NTEP Certified

Dimensions

Rated Capacity	A	B	C	F	G	I	J
kg/mm							
7.5 to 100	35.0	25.0	15.0	106.0	30.0	14.5	135.0



Interchangeable Products

AVERY WEIGH-TRONIX®  
MK29

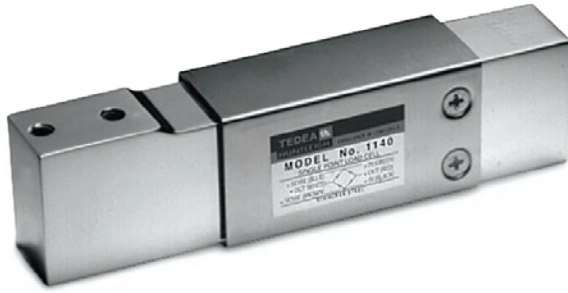
Specifications

- Full Scale Output:** 2.0 mV/V
- Output Resistance:** 350 (± 3) ohm
- Input Resistance:** 385 (± 15) ohm
- Material/Finish:** Stainless steel
- Temperature:** Compensated range 14 °F to 104 °F (-10 °C to 40 °C)  
Operating range 0 °F to 150 °F (-18 °C to 65 °C)
- Seal Type:** Environmentally sealed, IP66
- Safe Overload:** 200% full scale, at center loading point
- Rated Excitation:** 5 to 10 VDC (15 V maximum)
- Total Error:** 0.02% full scale
- Insulation Resistance:** 2,000 megohm
- Deflection at Capacity:** 0.015 in
- Cable Length:** 1.5 m, 3 m, 25 ft
- Cable Diameter:** 0.200 in, PVC jacket
- Cable Color Code:** Green +Excitation, Black -Excitation, Red +Signal, White -Signal, Blue +Sense, Brown -Sense
- Platform Size:** 15.75 × 15.75 in
- Warranty:** One-year limited
- Approvals:** cFMus, NTEP

VPG  
TEDEA-HUNTLEIGH

# 1140

Stainless Steel, Environmentally Sealed, Potted IP67



Picture is a representation of actual product

### Approvals

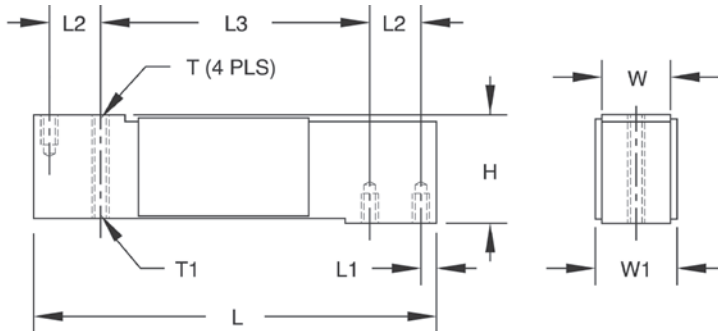


### Order Information

Load Rating	Part #	Est. Weight	Price
15 kg	17451	3 lb	\$339.00
30 kg	17452	3 lb	\$339.00
50 kg	17468	3 lb	\$339.00
75 kg	17485	3 lb	\$339.00
100 kg	17453	3 lb	\$339.00
150 kg	36466	3 lb	\$339.00

### Dimensions

Rated Capacity	H	L	L1	L2	L3	T	T1	W	W1
kg/mm									
15 to 150	40.0	150.0	5.95	19.1	100.0	1/4-20 UNC × 10 DP	1/4-28 UNF × 10 DP	25.4	29.4



### Interchangeable Products

RICE LAKE WEIGHING SYSTEMS  
**RL1140**..... page 163

### Specifications

- Full Scale Output:**  
2.0 mV/V
- Output Resistance:**  
350 (± 3) ohm
- Input Resistance:**  
385 (± 15) ohm
- Material/Finish:**  
Stainless steel
- Temperature:**  
Operating range  
0 °F to 150 °F (-18 °C to 65 °C)
- Seal Type:**  
Environmentally sealed, IP67
- Safe Overload:**  
150% at center loading point, full scale
- Cable Diameter:**  
0.200 PVC jacket
- Rated Excitation:**  
5 to 10 VDC (15 V maximum)
- Combined Error:**  
0.02% full scale
- Insulation Resistance:**  
2,000 megohm
- Deflection at Capacity:**  
0.015 in
- Cable Length:**  
10 ft
- Cable Diameter:**  
0.200 in PVC jacket
- Cable Color Code:**  
Green +Excitation  
Black -Excitation  
Red +Signal  
White -Signal  
Blue +Sense  
Brown -Sense
- Platform Size:**  
15.75 × 15.75 in
- Warranty:**  
One-year limited
- Approvals:**  
cFMus

TEDEA-HUNTLEIGH VPG





Picture is a representation of actual product

### Approvals

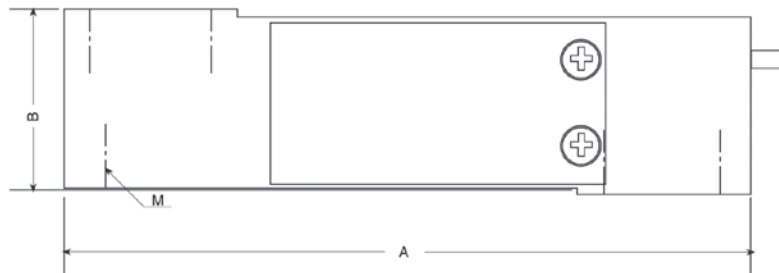
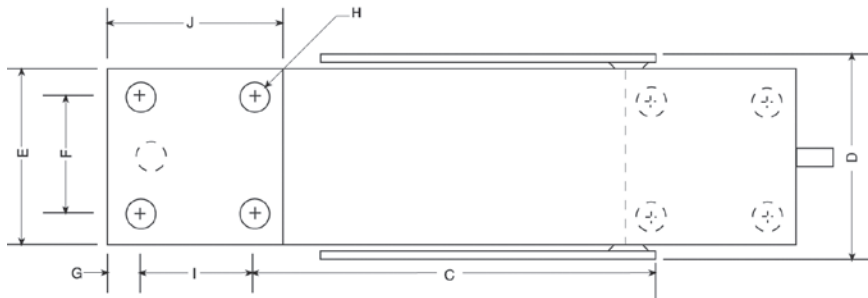


### Order Information

Load Rating	Part #	Est. Weight	Price
200 kg	47880	3 lb	\$371.00
250 kg	47881	3 lb	\$371.00

### Dimensions

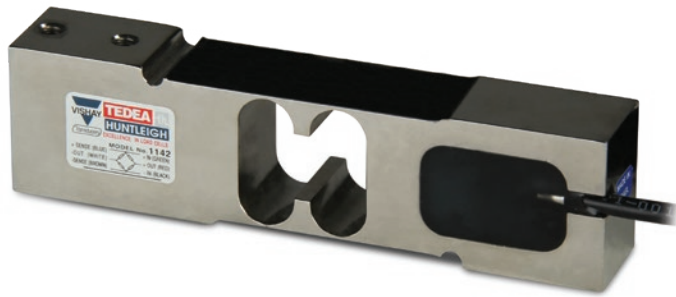
Rated Capacity	A	B	C	D	E	F	G	I	J	H	M
kg/mm											
200 to 250	150.1	39.9	86.6	43.4	38.1	25.4	6.35	25.4	38.1	1/4-20 UNC x 13 DP	1/4-28 UNF x 10 DP



### Specifications

- Full Scale Output:**  
2.0 mV/V
- Output Resistance:**  
351 (± 5) ohm
- Input Resistance:**  
380 (± 15) ohm
- Material/Finish:**  
Stainless steel
- Temperature:**  
Operating range  
0 °F to 150 °F (-18 °C to 65 °C)
- Seal Type:**  
Environmentally sealed, IP64
- Safe Overload:**  
150% full scale
- Rated Excitation:**  
5 to 10 VDC (15 V maximum)
- Combined Error:**  
0.02% full scale
- Insulation Resistance:**  
2,000 megohm
- Deflection at Capacity:**  
0.015 in
- Cable Length:**  
10 ft
- Cable Diameter:**  
0.200 in  
PVC jacket
- Cable Color Code:**  
Green +Excitation  
Black -Excitation  
Red +Signal  
White -Signal  
Blue +Sense  
Brown -Sense
- Platform Size:**  
15.5 × 15.5 in
- Warranty:**  
One-year limited
- Approvals:**  
cFMus

VPG  
TEDEA-HUNTLEIGH



Picture is a representation of actual product

### Approvals



Available upon request

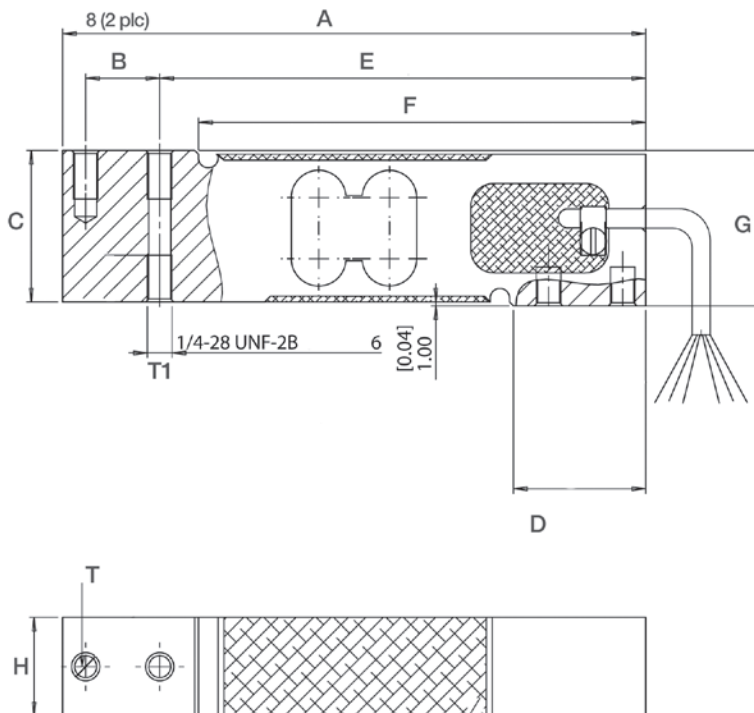
### Order Information

Load Rating	Part #	Est. Weight	Price
10 kg	156361	3 lb	\$339.00
15 kg	156362	3 lb	\$339.00
20 kg	156363	3 lb	\$339.00
30 kg	156364	3 lb	\$339.00
50 kg	156365	3 lb	\$339.00
100 kg	156367	3 lb	\$339.00
150 kg	157809	3 lb	\$339.00

Metric threads available as an option

### Dimensions

Rated Capacity	A	B	C	D	E	F	G	H	T	T1
kg/mm										
10 to 150	150.0	19.1	39.0	34.0	125.0	115.0	40.0	25.4	1/4-20 UNC	1/4-28 UNF



### Interchangeable Products

RICE LAKE WEIGHING SYSTEMS

RLPWM15..... page 154

HBM®\*

PW15..... page 229

\*Color code is different

### Specifications

**Full Scale Output:**

2.0 mV/V

**Output Resistance:**

351 (± 5.0) ohm

**Input Resistance:**

385 (± 10) ohm

**Material/Finish:**

Stainless steel

**Temperature:**

Compensated range

14 °F to 104 °F (-10 °C to 40 °C)

Operating range

0 °F to 150 °F (-18 °C to 65 °C)

**Seal Type:**

Environmentally sealed, IP66

**Safe Overload:**

150% full scale

**Rated Excitation:**

5 to 10 VDC nominal (15 V maximum)

**Combined Error:**

0.02% full scale

**Deflection at Capacity:**

0.015 in

**Insulation Resistance:**

2,000 megohm

**Cable Length:**

10 ft

**Cable Diameter:**

0.200 in PVC Jacket

**Platform Size:**

16 × 16 in

**Cable Color Code:**

Green +Excitation

Black -Excitation

Red +Signal

White -Signal

Blue +Sense

Brown -Sense

**Warranty:**

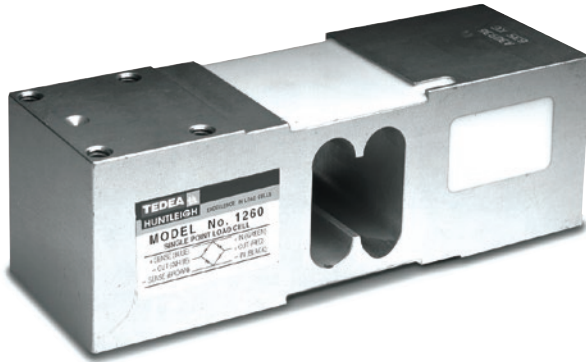
One-year limited

**Approvals:**

cFMus

NTEP

OIML (Available upon request)



Picture is a representation of actual product

**Approvals**



Available upon request

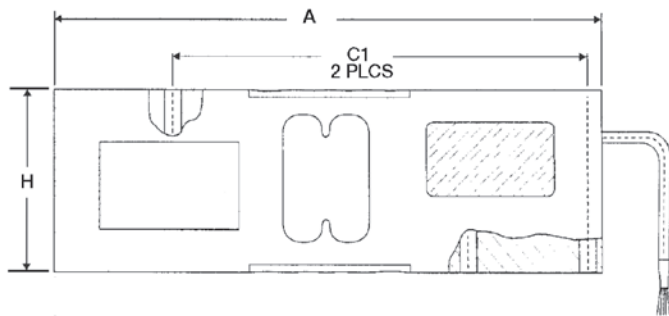
Available upon request

**Order Information**

Load Rating	Part #	Est. Weight	Price
50 kg	40769	5 lb	\$328.00
75 kg	40770	5 lb	\$328.00
100 kg	40771	5 lb	\$328.00
150 kg	159005	5 lb	\$328.00
200 kg	40772	5 lb	\$328.00
250 kg	40773	5 lb	\$328.00
300 kg	40774	5 lb	\$328.00
500 kg	40775	5 lb	\$328.00
635 kg	40776	5 lb	\$328.00

**Dimensions**

Rated Capacity	A	B	C	C1	D	E	F	G	H
kg/mm									
50 to 635	188.0	52.0	35.0	142.0	5.5	62.3	50.0	5/16-18 UNC	62.3



**Interchangeable Products**

- RICE LAKE WEIGHING SYSTEMS  
**RL1260** ..... page 166
- RICE LAKE WEIGHING SYSTEMS  
**RLPWM16**..... page 160
- VPG® TEDEA-HUNTLEIGH  
**1260S**..... page 320

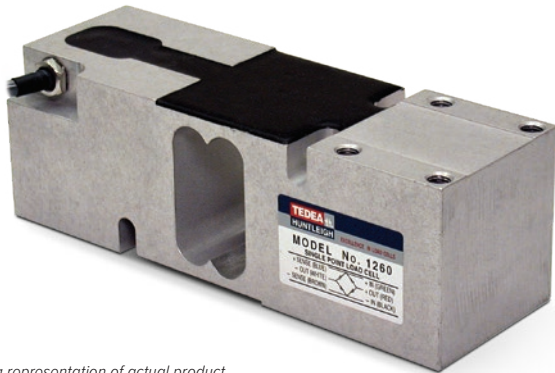
**Specifications**

- Full Scale Output:**  
2.0 mV/V
- Output Resistance:**  
350 (± 3) ohm
- Input Resistance:**  
415 (± 15) ohm
- Material/Finish:**  
Anodized aluminum
- Temperature:**  
Compensated range  
14 °F to 104 °F (-10 °C to 40 °C)  
Operating range  
0 °F to 150 °F (-18 °C to 65 °C)
- Seal Type:**  
Environmentally sealed, IP67
- Safe Overload:**  
150% of full scale at center loading point
- Rated Excitation:**  
5 to 10 VDC (15 V maximum)
- Combined Error:**  
0.02% full scale
- Insulation Resistance:**  
2,000 megohm
- Cable Length:**  
10 ft
- Cable Diameter:**  
0.220 in  
Polyurethane jacket
- Cable Color Code:**  
Green +Excitation  
Black -Excitation  
Red +Signal  
White -Signal  
Blue +Sense  
Brown -Sense
- Max Platform Size:**  
24 × 24 in
- Warranty:**  
One-year limited
- Approvals:**  
cFMus  
NTEP  
Ex (Available upon request)  
OIML (Available upon request)

VPG  
TEDEA-HUNTLEIGH

SINGLE POINT  
**1260S**

Aluminum, Environmentally Sealed, NTEP Certified 1:10,000 Class III Single Cell, IP66



Picture is a representation of actual product

Approvals

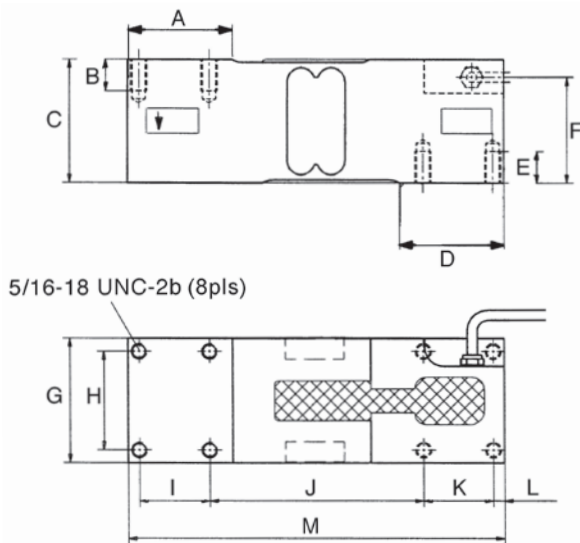


Order Information

Load Rating	Part #	Est. Weight	Price
75 kg	76395	5 lb	\$344.00
100 kg	76396	5 lb	\$344.00
150 kg	76397	5 lb	\$344.00
200 kg	76398	5 lb	\$344.00
250 kg	76399	5 lb	\$344.00
500 kg	76401	5 lb	\$344.00
635 kg	76402	5 lb	\$344.00

Dimensions

Rated Capacity	A	B	C	D	E	F	G	H	I	J	K	L	M
kg/mm													
75 to 635	52.0	16.0	62.3	52.0	16.0	52.3	63.0	50.0	35.0	107.0	35.0	5.5	188.0



Interchangeable Products

- RICE LAKE WEIGHING SYSTEMS  
**RL1260** ..... page 166
- RICE LAKE WEIGHING SYSTEMS  
**RL26018A**..... page 168
- VPG® TEDEA-HUNTLEIGH  
**1260** ..... page 319

Specifications

- Full Scale Output:**  
2.0 mV/V
- Output Resistance:**  
350 (± 3) ohm
- Input Resistance:**  
415 (± 15) ohm
- Material/Finish:**  
Anodized aluminum
- Temperature:**  
Compensated range  
14 °F to 104 °F (-10 °C to 40 °C)  
Operating range  
0 °F to 150 °F (-18 °C to 65 °C)
- Seal Type:**  
Environmentally sealed, IP66
- Safe Overload:**  
150% of full scale at center loading point
- Rated Excitation:**  
5 to 10 VDC (15 V maximum)
- Combined Error:**  
0.02% full scale
- Insulation Resistance:**  
2,000 megohm
- Cable Length:**  
10 ft
- Cable Diameter:**  
0.220 in  
Polyurethane jacket
- Cable Color Code:**  
Green +Excitation  
Black -Excitation  
Red +Signal  
White -Signal  
Blue +Sense  
Brown -Sense
- Max Platform Size:**  
24 × 24 in
- Warranty:**  
One-year limited
- Approvals:**  
cFMus  
NTEP

TEDEA-HUNTLEIGH VPG



Picture is a representation of actual product

Approvals



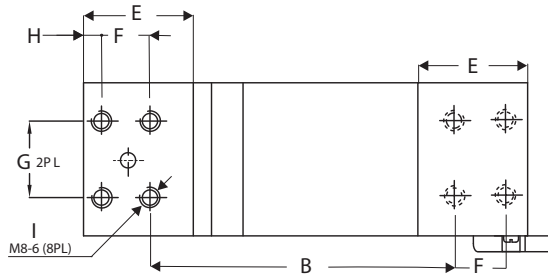
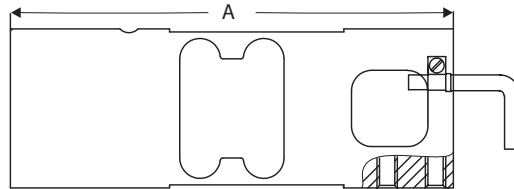
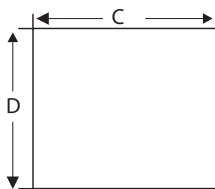
Available upon request

Order Information

Load Rating	Part #	Est. Weight	Price
50 kg	157478	5 lb	\$290.00
100 kg	157479	5 lb	\$290.00
150 kg	157480	5 lb	\$290.00
200 kg	157481	5 lb	\$290.00
250 kg	157482	5 lb	\$290.00
300 kg	157483	5 lb	\$290.00
500 kg	157484	5 lb	\$290.00
635 kg	157485	5 lb	\$290.00

Dimensions

Rated Capacity	A	B	C	D	E	F	G	H	I
kg/mm									
50 to 635 kg	174.0	122.0	60.0	62.5	43.0	19.0	30.0	7.0	M8-6



Interchangeable Products

TRANSCELL®  
FAV

Specifications

**Full Scale Output:**  
2 mV/V

**Output Resistance:**  
350 (± 3) ohm

**Input Resistance:**  
415 (± 15) ohm

**Material/Finish:**  
Anodized aluminum

**Temperature:**  
Operating range:  
0 °F to 150 °F (-18 °C to 65 °C)

**Seal Type:**  
Environmentally sealed, IP66

**Safe Overload:**  
150% of rated output

**Rated Excitation:**  
10 VAC (15 V maximum)

**Combined Error:**  
0.02% full scale

**Insulation Resistance:**  
2,000 megohm

**Cable Length:**  
5 ft

**Cable Diameter:**  
0.200 in  
PVC jacket

**Cable Color Code:**  
Green +Excitation  
Black -Excitation  
Red +Signal  
White -Signal

**Max Platform Size:**  
24 × 24 in

**Warranty:**  
One-year limited

**Approvals:**  
OIML  
Ex (Available upon request)

VPG  
TEDEA-HUNTLEIGH

# 1250

Aluminum, Environmentally Sealed, NTEP Certified 1:5,000 Class III Single Cell, Potted, IP67



Picture is a representation of actual product

### Approvals



Available upon request

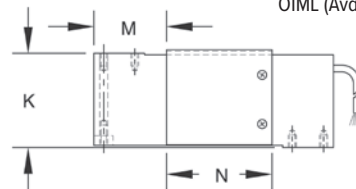
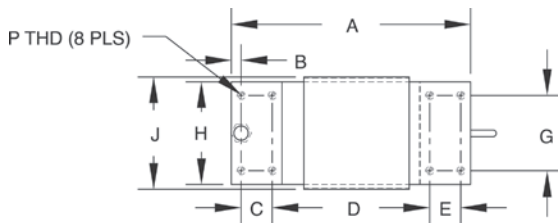
Available upon request

### Order Information

Load Rating	Part #	Est. Weight	Price
<b>NTEP Certified, 10 ft Cable</b>			
50 kg	17478	6 lb	\$365.00
75 kg	17469	6 lb	\$365.00
100 kg	33711	6 lb	\$365.00
150 kg	33712	6 lb	\$365.00
200 kg	33713	6 lb	\$365.00
250 kg	33714	6 lb	\$365.00
300 kg	33715	6 lb	\$365.00
500 kg	33716	6 lb	\$365.00
635 kg	33717	6 lb	\$365.00
1,000 kg	17480	6 lb	\$365.00
<b>Non-NTEP Certified, 25 ft Cable</b>			
50 kg	40944	6 lb	\$365.00
75 kg	40945	6 lb	\$365.00
100 kg	40946	6 lb	\$365.00
150 kg	32342	6 lb	\$365.00
200 kg	32341	6 lb	\$365.00
250 kg	40947	6 lb	\$365.00
300 kg	32340	6 lb	\$365.00

### Dimensions

Rated Capacity	A	B	C	D	E	G	H	J	K	M	N	P
kg/mm												
50 to 1,000	191.0	11.0	25.0	125.0	25.0	60.0	75.0	82.0	75.0	57.5	85.0	5/16-18 UNC x 15DP



### Interchangeable Products

RICE LAKE WEIGHING SYSTEMS  
**RL1218A**.....page 169

RICE LAKE WEIGHING SYSTEMS  
**RL1250**

FLINTEC®  
**PCB\***.....page 215

TRANSCELL®  
**FAY**

\*Stainless steel, hermetically sealed

### Specifications

**Full Scale Output:**  
2.0 mV/V

**Bridge Resistance:**  
350 ohm, nominal

**Material/Finish:**  
Anodized aluminum

**Temperature:**  
Compensated range  
14 °F to 104 °F (-10 °C to 40 °C)  
Operating range  
0 °F to 150 °F (-18 °C to 65 °C)

**Seal Type:**  
Environmentally sealed, IP67

**Safe Overload:**  
150% of full scale at center loading point

**Rated Excitation:**  
5 to 10 VDC (15 V maximum)

**Combined Error:**  
0.02% full scale

**Insulation Resistance:**  
2,000 megohm

**Deflection at Capacity:**  
0.015 in

**Cable Length:**  
10 ft  
25 ft

**Cable Diameter:**  
0.200 in PVC jacket

**Cable Color Code:**  
Green +Excitation  
Black -Excitation  
Red +Signal  
White -Signal  
Blue +Sense  
Brown -Sense

**Max Platform size:**  
50 to 500 kg: 800 × 800 mm  
635 to 1,000 kg: 600 × 600 mm

**Warranty:**  
One-year limited

**Approvals:**  
cFMus  
NTEP  
Ex (Available upon request)  
OIML (Available upon request)



Picture is a representation of actual product

### Approvals



Available upon request

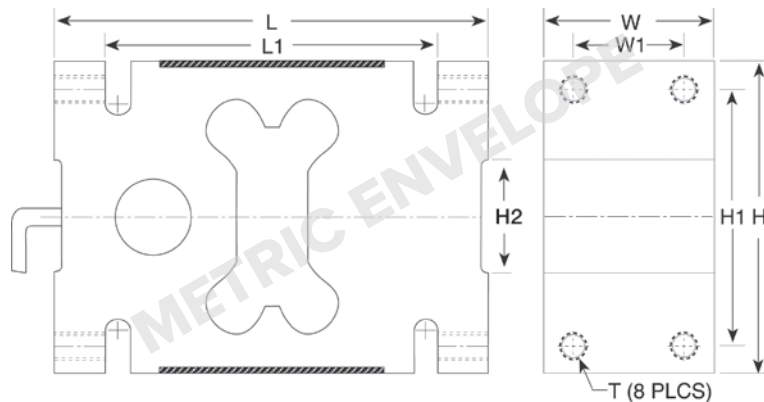
Available upon request

### Order Information

Load Rating	Part #	Est. Weight	Price
1,000 kg	29908	9 lb	\$556.00
1,500 kg	29909	9 lb	\$556.00
2,000 kg	29910	9 lb	\$556.00

### Dimensions

Rated Capacity	H	H1	H2	L	L1	T	W	W1
kg/mm								
1,000 to 2,000	126.0	95.0	45.0	176.0	135.0	M16 × 2-6H	76.0	46.0



### Specifications

**Full Scale Output:**

2.0 mV/V

**Output Resistance:**

350 (± 3) ohm

**Input Resistance:**

415 (± 15) ohm

**Material/Finish:**

Aluminum alloy

**Temperature:**

Compensated range

14 °F to 104 °F (-10 °C to 40 °C)

Operating range

0 °F to 150 °F (-18 °C to 65 °C)

**Seal Type:**

Environmentally sealed, IP66

**Safe Overload:**

150% full scale

**Rated Excitation:**

5 to 10 VDC (15 V maximum)

**Combined Error:**

0.02% full scale

**Insulation Resistance:**

2,000 megohm

**Deflection at Capacity:**

0.015 in

**Max. Platform Size:**

4 × 4 ft

**Cable Length:**

5 m

**Cable Diameter:**

0.220 in

Polyurethane jacket

**Cable Color Code:**

Green +Excitation

Black -Excitation

Red +Signal

White -Signal

Blue +Sense

Brown -Sense

**Warranty:**

One-year limited

**Approvals:**

cFMus

NTEP

Ex (Available upon request)

OIML (Available upon request)

VPG  
TEDEA-HUNTLEIGH



Picture is a representation of actual product

### Approvals



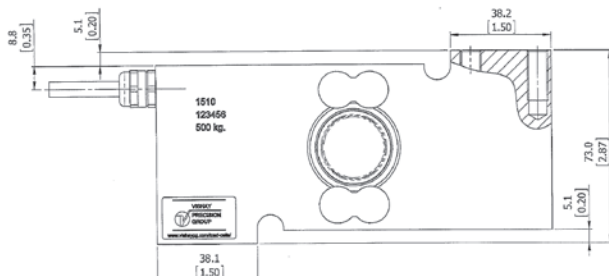
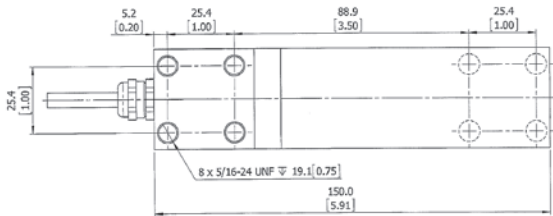
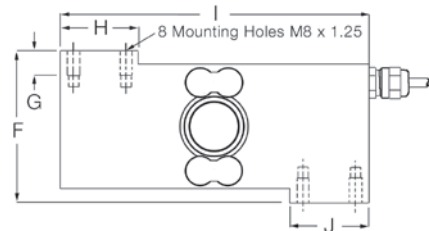
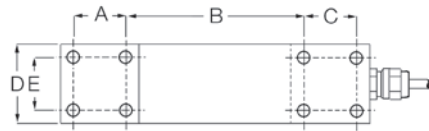
### Order Information

Load Rating	Part #	Est. Weight	Price
<b>OIML</b>			
100 kg	65851	6 lb	\$842.00
250 kg	65852	6 lb	\$842.00
500 kg	65853	6 lb	\$842.00
<b>NTEP Certified</b>			
500 kg*	167585	6 lb	\$842.00

\*Used in Rice Lake monorail scale

### Dimensions

Rated Capacity	A	B	C	D	E	F	G	H	I	J
kg/mm										
100 to 500	25.4	86.3	25.4	38.1	25.4	72.8	11.9	38.1	149.9	38.1



Tede 1510 PN 167585 to be used with Rice Lake Monorail Scale

### Specifications

- Full Scale Output:** 2.0 mV/V
- Output Resistance:** 350 (± 3) ohm
- Input Resistance:** 380 (± 10) ohm
- Material/Finish:** Stainless steel
- Temperature:** Compensated range 14 °F to 104 °F (-10 °C to 40 °C)  
Operating range 0 °F to 150 °F (-18 °C to 65 °C)
- Seal Type:** Welded-seal, IP68
- Safe Overload:** 150% at center loading point, full scale
- Rated Excitation:** 5 to 10 VDC (15 V maximum)
- Combined Error:** 0.020% full scale
- Insulation Resistance:** 2,000 megohm
- Cable Length:** 10 ft
- Cable Diameter:** 0.220 in  
Polyurethane jacket
- Cable Color Code:** Green +Excitation  
Black -Excitation  
Red +Signal  
White -Signal  
Blue +Sense  
Brown -Sense
- Platform Size:** 23.62 × 23.62 in
- Warranty:** One-year limited
- Approvals:** cFMus, OIML, NTEP





Picture is a representation of actual product

Approvals



Order Information

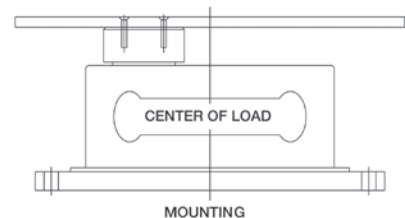
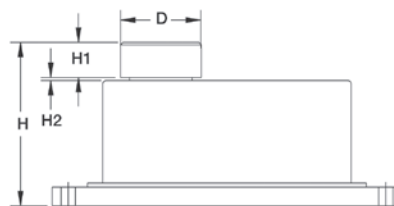
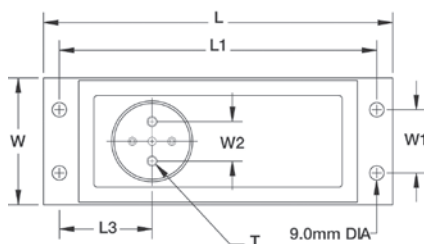
Load Rating	Part #	Est. Weight	Price
<b>Stainless Steel</b>			
2 kg*	17567	8 lb	\$875.00
5 kg	17568	8 lb	\$875.00
7 kg	17569	8 lb	\$875.00
10 kg	17570	8 lb	\$875.00
15 kg	17571	8 lb	\$875.00
20 kg	17572	8 lb	\$875.00
30 kg	17573	8 lb	\$875.00
50 kg	17574	8 lb	\$875.00
<b>Alloy Steel</b>			
2 kg*	17559	8 lb	\$768.00
5 kg	17560	8 lb	\$768.00
7 kg	17561	8 lb	\$768.00
10 kg	17562	8 lb	\$768.00
15 kg	17563	8 lb	\$768.00
20 kg	17564	8 lb	\$768.00
30 kg	17565	8 lb	\$768.00
50 kg	17566	8 lb	\$768.00

\*Non-NTEP Certified

Note: The special fluid damped operation is particularly well-suited for applications where quick weighment is required, e.g., checkweighers

Dimensions

Rated Capacity	D	H	H1	H2	L	L1	L3	T	W	W1	W2
kg/mm											
2 to 50	50 dia	115.0	21.0	2.0	220.0	200.0	58.5	1/4-20 UNC x 10 DP	80.0	40.0	25.0



Interchangeable Products

RICE LAKE WEIGHING SYSTEMS  
**RL260FD\*** ..... page 167

\*3000d NTEP, 16.4 ft cable

Specifications

**Full Scale Output:**

2.0 mV/V

**Output Resistance:**

350 (± 3) ohm

**Input Resistance:**

415 (± 15) ohm

**Material/Finish:**

Anodized aluminum in alloy steel or stainless steel

**Temperature:**

Compensated range

14 °F to 104 °F (-10 °C to 40 °C)

Operating range

0 °F to 150 °F (-18 °C to 65 °C)

**Seal Type:**

Environmentally sealed, IP66

**Safe Overload:**

150% at center loading point, full scale

**Rated Excitation:**

5 to 10 VDC (15 V maximum)

**Combined Error:**

0.025% full scale

**Insulation Resistance:**

2,000 megohm

**Cable Length:**

10 ft

**Cable Diameter:**

0.370 in PVC jacket

**Cable Color Code:**

Green +Excitation

Black -Excitation

Red +Signal

White -Signal

Blue +Sense

Brown -Sense

**Warranty:**

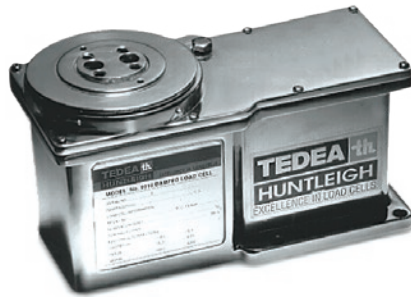
One-year limited

**Approvals:**

NTEP

OIML (Available upon request)

VPG  
 TEDEA-HUNTLEIGH



Picture is a representation of actual product

### Approvals



### Order Information

Load Rating	Part #	Est. Weight	Price
3 kg	Consult	7 lb	\$950.00
5 kg	Consult	7 lb	\$950.00
7 kg	Consult	7 lb	\$950.00
10 kg	Consult	7 lb	\$950.00
15 kg	Consult	7 lb	\$950.00
20 kg	Consult	7 lb	\$950.00
30 kg	Consult	7 lb	\$950.00
50 kg	Consult	7 lb	\$950.00

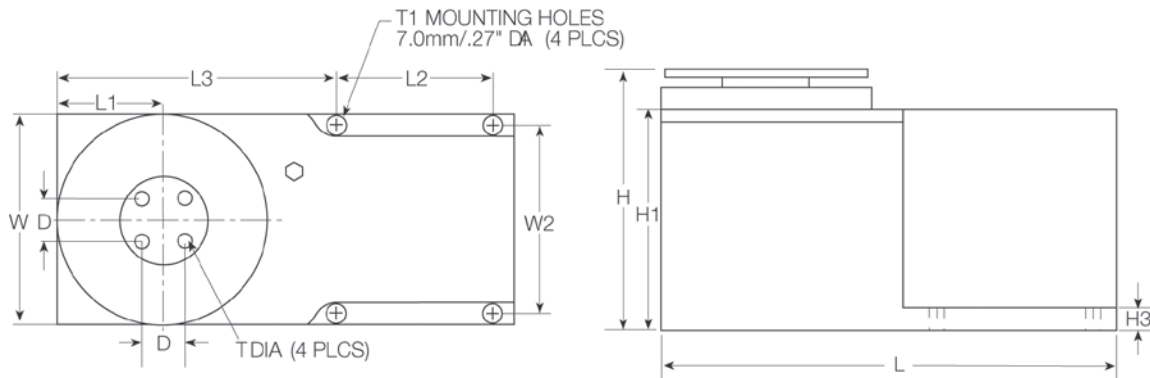
Note: The special fluid damped operation is particularly well-suited for applications where quick weightment is required, e.g., checkweighers

9010 load cells are custom-manufactured per specific application requirements; use the Application Definition Form on page 330 of this section as well as online at [www.ricelake.com/questionnaires](http://www.ricelake.com/questionnaires) to define your applications

Available in stainless steel with breather vent option for washdown applications

### Dimensions

Rated Capacity	D	H	H1	H3	L	L1	L2	L3	T	W	W2
kg/mm											
3 to 50	19.1	115.2	97.3	10.0	199.5	46.0	71.5	119.8	1/4-20 UNC x 20 DP	92.0	82.0



### Specifications

**Full Scale Output:**

2.0 mV/V

**Output Resistance:**

350 (± 5) ohm

**Input Resistance:**

415 (± 15) ohm

**Material/Finish:**

Aluminum

**Temperature:**

Operating range  
0 °F to 150 °F (-18 °C to 65 °C)

**Seal Type:**

Environmentally sealed, IP65

**Safe Overload:**

800% full scale downward,  
400% full scale upward

**Rated Excitation:**

15 VDC (15 V maximum)

**Combined Error:**

0.03% full scale

**Insulation Resistance:**

5,000 megohm

**Cable Length:**

3 ft

**Cable Diameter:**

0.370 in PVC jacket

**Cable Color Code:**

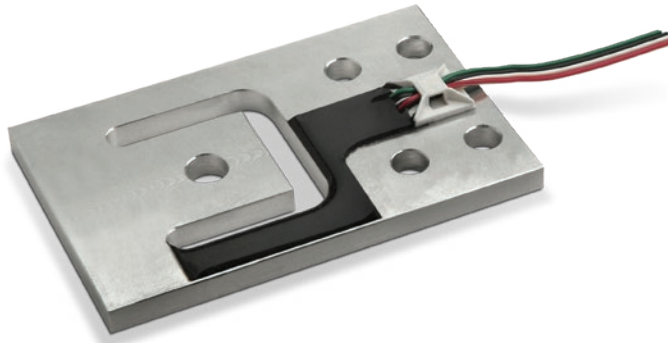
Green +Excitation  
Black -Excitation  
Red +Signal  
White -Signal  
Blue +Sense  
Brown -Sense

**Warranty:**

One-year limited

**Approvals:**

cFMus



Picture is a representation of actual product

Approvals



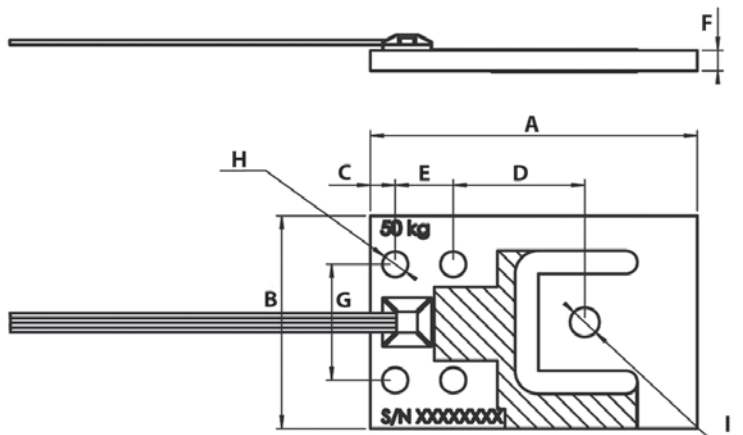
Available upon request

Order Information

Load Rating	Part #	Est. Weight	Price
7.5 kg	112921	1 lb	\$80.00
15 kg	186687	1 lb	\$85.00
37.5 kg	112922	1 lb	\$85.00
50 kg	112923	1 lb	\$90.00
75 kg	112924	1 lb	\$90.00
150 kg	112925	1 lb	\$106.00

Dimensions

Rated Capacity	A	B	C	D	E	F	G	H	I
kg/mm									
7.5	70.0	39.0	4.9	28.0	14.0	2.5	27.8	5.1	5.1
15.0	70.0	39.0	4.9	28.0	14.0	4.1	27.8	5.1	5.1
37.5	76.2	44.5	6.0	29.3	15.0	4.8	30.0	6.6	6.2
50.0	84.5	55.0	6.4	34.0	15.0	5.3	30.0	6.6	7.6
75.0	84.5	55.0	6.4	34.0	15.0	6.4	30.0	6.6	7.6
150.0	107.5	70.0	7.8	45.9	22.8	8.0	44.5	8.1	8.2



Specifications

Full Scale Output:

1.0 mV/V

Output Resistance:

1,000 (± 10) ohm

Input Resistance:

1,160 (± 15) ohm

Material/Finish:

Aluminum

Temperature:

Compensated range

14 °F to 104 °F (-10 °C to 40 °C)

Operating range

0 °F to 150 °F (-18 °C to 65 °C)

Seal Type:

Environmentally sealed, IP65

Safe Overload:

150% full scale

Rated Excitation:

5 to 10 VDC

Insulation Resistance:

5,000 megohm

Cable Length:

1.5 m flat ribbon type, PVC

Cable Color Code:

Green +Excitation

Black -Excitation

Red +Signal

White -Signal

Warranty:

One-year limited

Approvals:

NTEP

OIML (available upon request)

VPG  
TEDEA-HUNTLEIGH



Picture is a representation of actual product

**Approvals**

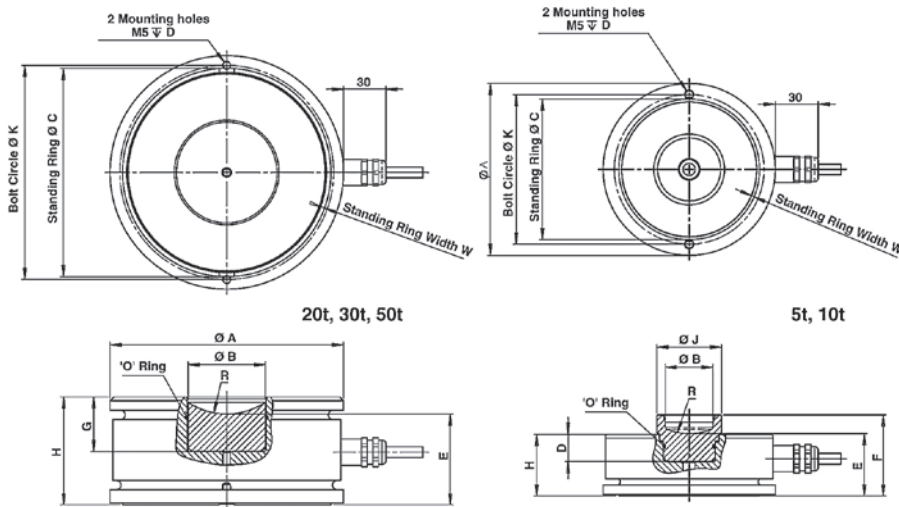


**Order Information**

Load Rating	Part #	Est. Weight	Price
5,000 kg	<b>65854</b>	3 lb	\$1,266.00
10,000 kg	<b>65855</b>	5 lb	\$1,372.00
20,000 kg	<b>65856</b>	8 lb	\$1,372.00
30,000 kg	<b>65857</b>	8 lb	\$1,372.00

**Dimensions**

Rated Capacity	A	B	C	D	E	H
kg/mm						
5,000	80.0	19.0	70.0	20.0	33.4	30.0
10,000	92.0	28.0	80.0	14.6	33.4	33.0
20,000 to 30,000	110.0	29.0	101.5	26.3	39.0	50.0



**Interchangeable Products**

AVERY WEIGH-TRONIX®  
**220**

**Weigh Module Available**

RICE LAKE WEIGHING SYSTEMS  
**220**.....page 37

**Specifications**

- Full Scale Output:**  
2.0 mV/V
- Output Resistance:**  
1,025 (± 20) ohm
- Input Resistance:**  
1,065 (± 60) ohm
- Material/Finish:**  
Stainless steel
- Temperature:**  
Compensated range  
14 °F to 104 °F (-10 °C to 40 °C)  
Operating range  
0 °F to 150 °F (-18 °C to 65 °C)
- Seal Type:**  
Hermetically sealed, IP68
- Safe Overload:**  
150% at center loading point, full scale
- Rated Excitation:**  
5 to 10 VDC (15 V maximum)
- Combined Error:**  
0.020% full scale
- Insulation Resistance:**  
2,000 megohm
- Deflection at Capacity:**  
< 0.5 mm at full scale
- Cable Length:**  
5,000 kg: 5 m  
10,000 to 20,000 kg: 10 m  
30,000 kg: 20 m
- Cable Diameter:**  
0.220 in  
Polyurethane jacket
- Cable Color Code:**  
Blue +Excitation  
Black -Excitation  
White +Signal  
Red -Signal  
Green +Sense  
Gray -Sense
- Warranty:**  
One-year limited
- Approvals:**  
cFMus  
OIML  
NTEP



Picture is a representation of actual product

**Specifications**

- Full Scale Output:**  
1.5 mV/V
- Output Resistance:**  
605 (± 5) ohm
- Input Resistance:**  
670 (± 15) ohm
- Material/Finish:**  
Stainless steel
- Temperature:**  
Operating range  
-0 °F to 150 °F (-18 °C to 65 °C)
- Seal Type:**  
Environmentally sealed, IP68
- Safe Overload:**  
150% full scale
- Rated Excitation:**  
5 to 10 VDC
- Combined Error:**  
0.02% of applied load
- Insulation Resistance:**  
2,000 megohm
- Cable Length:**  
15 m
- Cable Color Code:**  
Green +Excitation  
Black -Excitation  
Red +Signal  
White -Signal  
Blue +Sense  
Brown -Sense
- Warranty:**  
One-year limited

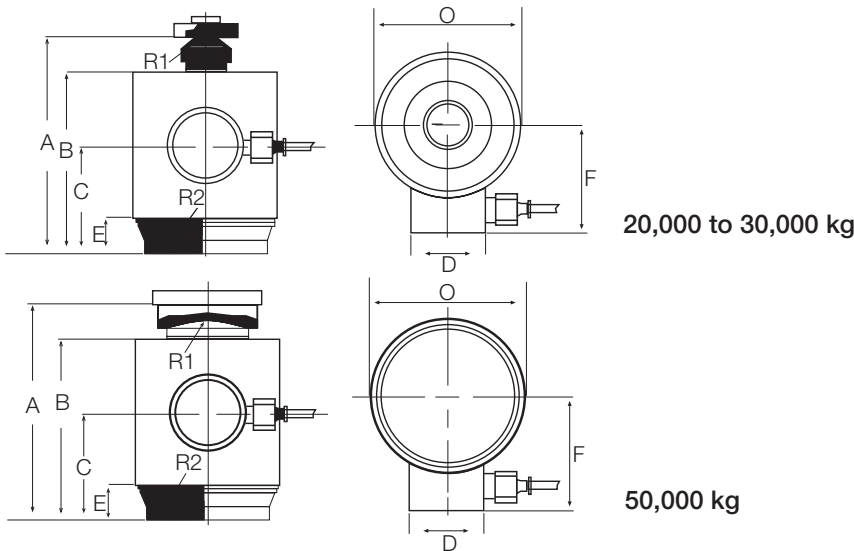
VPG  
TEDEA-HUNTLEIGH

**Order Information**

Load Rating	Part #	Est. Weight	Price
20,000 kg	169233	10 lb	\$662.00
30,000 kg	169234	10 lb	\$662.00
50,000 kg	169235	13 lb	\$662.00

**Dimensions**

Rated Capacity	A	B	C	D	E	F	O	R1	R2
kg/mm									
20,000	138.3	112.3	72.3	50.0	32.3	69.0	88.0	15.0	150.0
30,000	138.3	112.3	72.3	50.0	32.3	69.0	88.0	15.0	150.0
50,000	155.5	115.8	74.0	50.0	32.3	69.0	88.0	35.0	300.0



Load cups not included

# VPG Tedeo-Huntleigh Model 9010 Application Definition Form

Customer's Name: \_\_\_\_\_ Number of Units: \_\_\_\_\_

Contact Person: \_\_\_\_\_ Date: \_\_\_\_\_

Application: \_\_\_\_\_

Tare Weight (Dead Load), kg: \_\_\_\_\_

Useful Weight (Live Load), kg: \_\_\_\_\_

If Checkweigher:

Size of conveyor platform (cm × cm): Length (movement direction) \_\_\_\_\_ Width \_\_\_\_\_

Size of weighed product in movement direction (cm): \_\_\_\_\_

Speed of belt (cm/sec): \_\_\_\_\_

Tare weight distribution: Conveyor (kg) \_\_\_\_\_

Motor (kg) \_\_\_\_\_

Position of motor (see sketch, cm): D \_\_\_\_\_ F \_\_\_\_\_

If not checkweigher (see sketch):

Estimated tare C.G. position (cm): D \_\_\_\_\_ F \_\_\_\_\_

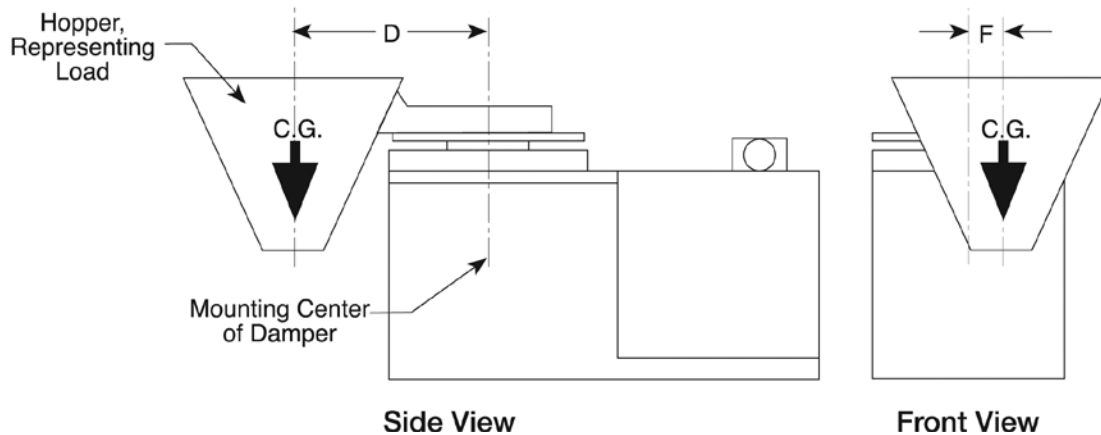
Loading position (cm): D \_\_\_\_\_ F \_\_\_\_\_ Drop height (cm) \_\_\_\_\_

If C.G. of load varies, max. distance between extreme position (cm): \_\_\_\_\_

Describe live load (powder, fruit, screws, etc.): \_\_\_\_\_

Settling time (milliseconds): \_\_\_\_\_

Accuracy required: \_\_\_\_\_ Operating temperature range (°C): \_\_\_\_\_



*Return completed form to your sales representative.*

For factory use; do not write in space below.

Serial Numbers: \_\_\_\_\_ Sales Order #: \_\_\_\_\_

Delivery Quoted: \_\_\_\_\_ Date: \_\_\_\_\_