



ADDITIONAL PRODUCTS

EQUIPOISE SERIES

TOPLOADER BALANCE



FEATURES

- LCD display
- Quick response
- Accumulation, counting and percentage modes
- 13 different units of measure
- Detachable enclosed weighing chamber (in capacities = 1 kg)
- Battery operation for up to 40 hours of continuous use (without backlight)
- RS-232 interface for connecting to printer or PC
- Plastic enclosure

SPECIFICATIONS

Weighing Units:

Gram, Ounce, Pound, Carat, Pennyweight, Troy Ounce, Grain (see technical manual for complete listing)

Operating Modes:

Weighing, Percent Weighing, Parts Counting, Accumulation

Power:

AC adapter (12 V/500 mA); internal rechargeable battery (6 V/1.2 Ah)

Stabilization Time:

2 seconds

Operating Temperature:

32 °F to 104 °F (0 °C to 40 °C)

Calibration Weight:

EQ-300: 300 g, EQ-600: 600 g,
EQ-1500: 1,500 g
EQ-3000: 3,000 g, EQ-6000: 6,000 g

Est. Weight:

6.6 lb (3 kg)

Battery Life:

Up to 40 hours of continuous use (without backlight)

Return Policy:

Rice Lake standard policy

Warranty:

One-year limited

Approval:

CE Marked





TUNING FORK ENHANCED BALANCE

MODEL	CAPACITY	PART #
EQ-300	300 × 0.01 g	165338
EQ-600	600 × 0.02 g	165339
EQ-1500	1,500 × 0.05 g	165340
EQ-3000	3,000 × 0.1 g	165341
EQ-6000	6,000 × 0.2 g	165342

OPTIONS

DESCRIPTION	PART #
Printer cable, DB9M to 25-pin M	41279
SP742 dot matrix printer, tear bar	103142
AbleCable RS-232/USB cable (requires 130789)	119919
Slim line null modem adapter	130789
Aluminum case	131135
AC adapter, 110-240 VAC, interchangeable plugs	165183



PN 165183 Multi-range AC adapter and multi-plug

TE SERIES

TUNING FORK ENHANCED BALANCE



FEATURES

- External weight calibration
- Seven-segment (main)/16-segment (sub) display
- Selectable modes: Weighing, Counting, Percentage, Coefficient, Specific Gravity, Statistics, Animal and Formulation
- Mono-metal tuning fork technology (MMTF) provides quick response and stability
- 30-step bar graph display
- AA dry-cell port, (150 hours continuous use with LCD backlight and communication signal ON)
- RS-232 interface for connecting to printer or PC
- Glass breeze break (TE-223, TE-322NC and TE-623 only)

SPECIFICATIONS

Weighing Units:

Milligram, Gram, Ounce, Pound, Carat, Pennyweight, Troy Ounce (see technical manual for complete listing)

Operating Modes:

Weighing, Counting, Percentage, Coefficient, Specific Gravity, Statistics, Animal, Formulation

Power:

100 to 240 VAC adapter, AA dry cell (batteries not included)

Operating Temperature:

41 °F to 95 °F (5 °C to 35 °C)

Est. Weight:

TE-223 / 322NC: 6.5 lb (3 kg)
TE-623 / 3202 / 6202 / 15001 / 1501NC / 8200NC: 6.0 lb (2.7 kg)

Warranty:

Five-year limited

Return Policy:

Rice Lake standard policy

Approvals:

NTEP Certified CC 17-104
Measurement Canada AM-6169



Legal for Trade, ideal for cannabis

TUNING FORK ENHANCED BALANCE

MODEL	CAPACITY	PART #
TE-223	220 × 0.001 g	187600
TE-623	620 × 0.001 g	186030
TE-3202	3,200 × 0.01 g	186035
TE-6202	6,200 × 0.01 g	186036
TE-15001	15,000 × 0.1 g	186037
NTEP AND MEASUREMENT CANADA APPROVED		
TE-322NC	320 × 0.01 g	204688
TE-1501NC	1,500 × 0.1 g	204689
TE-8200NC	8,200 × 1 g	204690

OPTIONS

DESCRIPTION	PART #
Power supply 100-240 VAC, 50-60Hz	186074
In-use dust cover 620g models and lower	186075
In-use dust cover 3,200g models and higher	186076
Specific Density Measurement Kit	186077
Ethernet TCP/IP option card	186079

CALIBRATION WEIGHTS

Medical scale calibration requires certified weights that can be traced to the National Institute of Standards and Technology (NIST). This will ensure your scale is calibrated properly and ready for the requirements of weighing in medical settings. Consumer weights such as barbells or similar items may not provide an accurate weight to calibrate your scale. For example, a 5-pound consumer weight, such as a barbell, may actually weigh between 4.75 and 5.25 pounds. Calibration weights with traceability to NIST have a manufactured and adjusted tolerance of ± 230 milligrams. Using a NIST-traceable calibration weight will ensure your scale is calibrated correctly and presents accurate weighments for proper patient care.

FEATURES

- Cast iron
- Grip handle
- ASTM Class 6
- Imperial or metric
- Made in the U.S.A.

OPTIONS

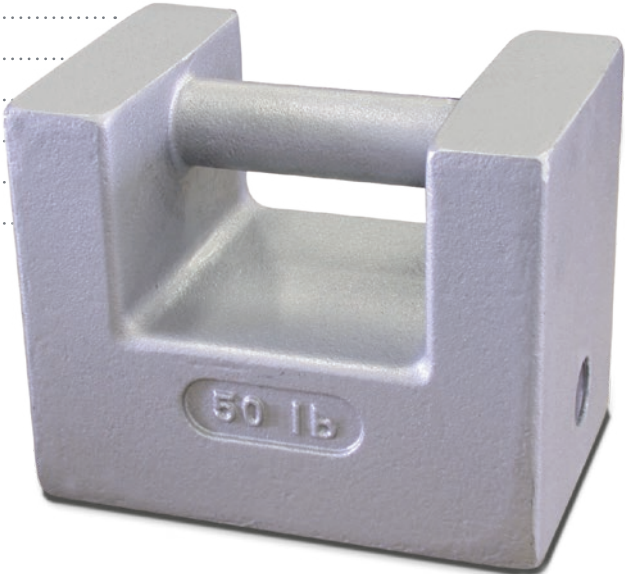
- Certificate of Calibration
- Stamped serial number





CALIBRATION WEIGHTS

PART NUMBER	DESCRIPTION
IMPERIAL WEIGHTS	
12828	10 lb ASTM Class 7
12870	20 lb ASTM Class 6
12833	25 lb ASTM Class 6
12878	30 lb ASTM Class 6
12839	50 lb ASTM Class 6
METRIC WEIGHTS	
12786	5 kg ASTM Class 7
12767	10 kg ASTM Class 6
12771	20 kg ASTM Class 6
12775	25 kg ASTM Class 6
105414	5 kg OIML Class M1
105415	10 kg OIML Class M1
105416	20 kg OIML Class M1



HOW OFTEN SHOULD YOU CALIBRATE A MEDICAL SCALE?



How and where a scale is used can determine how often it is necessary to check the weight accuracy or calibrate a medical scale.

To create a calibration schedule, consider:

- How often the scale is used
- If the scale is frequently moved from location to location
- Whether or not weight will determine a patient's medicinal dosage

Calibrate your scale if any of the following happen:

- A physical impact which may alter the scale
- Extreme temperature changes
- Installation of replacement parts

The best way to determine whether calibration is necessary is to use a certified weight to check the accuracy of the scale. Using a certified calibration weight will ensure your scale is calibrated correctly and presents accurate weighments for proper patient care.

In addition to regular weight accuracy checks with certified weights, performing preventative maintenance inspections is an effective way to keep your medical scale functioning properly.

In addition to a robust line of healthcare scales, Rice Lake offers certified test weights to check and calibrate scales.

Visit www.ricelake.com/castironweights for more information about Rice Lake's cast iron calibration weights.



HOW TO PROPERLY CLEAN HEALTHWEIGH® HEALTH SCALES

Knowing how to clean your Rice Lake health scale is essential to its proper operation.
Proper care and cleaning will help ensure accurate and effective operation.

Follow these tips to ensure proper cleaning of your Rice Lake health scale.



STEP 1

Turn the power off.
Disconnect your
scale from the AC
power source.



STEP 2

Clean all external
surfaces with a clean,
damp cloth or tissue.



STEP 3

Dry with a clean,
soft cloth.



STEP 4

Reconnect your
scale to the AC
power source and
resume usage.



IMPORTANT TIPS

Use of alcohol based products could potentially lead to the display and keypad drying out and ultimately failing.

Mild soap (any liquid and/or antimicrobial) and water solution may be used.

Do not immerse the scale into cleaning or other liquid solutions.

An EPA-registered product can be used on the scale, but use sparingly and avoid the display if possible.



Rice Lake knows how important dependable weights and measurements are in healthcare, fitness and medical settings. Learn more about our healthcare products at www.ricelake.com/health.



ADDITIONAL RICE LAKE PRODUCTS FOR YOUR FACILITY

Rice Lake is dedicated to providing weighing solutions that are useful for every part of your facility, including nutrition services, housekeeping and waste management as well as the pharmacy and lab. Read below for information about equipment that may be used to support facility operations.

BENCH SCALES

For mobility and convenience, bench scales offer ideal features that are adaptable to a wide range of needs in a healthcare facility. Rice Lake can provide a bench scale in almost any capacity or requirement.

POSTAL SCALE

Rice Lake's digital postal scale is designed to streamline mailing services in your facility. It has a tempered glass display and can be battery operated for portability. This scale is ideal for small packages and connects directly to the USPS or Canada Post.

FLOOR SCALES

Available in a vast number of capacities, sizes and mounting profiles, Rice Lake's RoughDeck® floor scales are ideal for weighing bulk items such as laundry, facility waste, equipment and shipments.

RETAIL SCALES

Used in food services, Rice Lake specializes in point of sales (POS) retail scales for accurate food portioning. These versatile weighing solutions feature portability, ease-of-use and precision for food service staff.

For information on Rice Lake's comprehensive line of weighing solutions and extensive in-stock product inventory, visit www.ricelake.com or call one of our helpful representatives at 800-472-6703.
