



RICE LAKE
LIVESTOCK SCALES

INSTRUMENTATION



RICE LAKE[®]
WEIGHING SYSTEMS

800-472-6703
www.ricelake.com



RICE LAKE
LIVESTOCK SCALES

INSTRUMENTATION

Rice Lake has taken our proven, highly durable instrumentation line and tailored it to meet the specific needs of the ranching industry. We have paired our livestock scales with instrumentation packages perfectly suited for the toughest ranching jobs around.

Rice Lake livestock instrumentation can be used on many scales, including non-Rice Lake models. In Legal for Trade applications, both the scale and instrumentation need Legal for Trade certification.

Rice Lake Livestock Scales

Mobile and Portable Multi-Animal Scales

The Legal for Trade mobile MAS-M and portable MAS-P multi-animal scales provide Legal for Trade weights in locations where the scale may be off level by as much as three degrees (or 6 percent). These scales are versatile and meet the demands of multi-site livestock weighing.

Stationary Multi-Animal Scales

The Legal for Trade load cell based MAS-LC and the mechanical pipe lever based MAS-LM stationary multi-animal scales are constructed for durability and long-lasting use. The MAS-LC and MAS-LM are dependable, hardy scales for any stationary weighing application.

Single Animal Scales

The Legal for Trade SAS single animal scales are built tough for added operator and animal safety. These scales are ideal for producers who weigh cattle one at a time. The SAS offers a load capacity of up to 5,000 pounds.



920i® Weigh Center

The 920i weigh center features a built-in 920i digital weight indicator and ticket printer in a weatherproof enclosure. The 920i has a large backlit LCD graphical display with easy navigation and a straightforward user interface. The weigh center includes a weatherproof USB port to transfer results to a flash drive and upload to a PC database or spreadsheet. The 920i can be equipped with Group Weighing software or single animal Rate of Gain software. If used with mobile or portable multi-animal scales, the 920i weigh center eliminates the need to recalibrate the scale after relocation.

Features

- Weigh center includes ticket printer for Legal for Trade ticket printing
- USB port to transfer weight data to a flash drive
- Inclinator board eliminates need to recalibrate after relocation

Multi-Animal Weighing

- Multiple animal Group Weighing software
- Reports batch, animal lot, total weight, head count and shrink

Single Animal Weighing

- Single animal Rate of Gain software
- Reports daily rate of gain and average gain with 2 to 3 captured weights for up to 500 animals

Specifications

Display: (W x H) 4.6 x 3.4 in LCD display

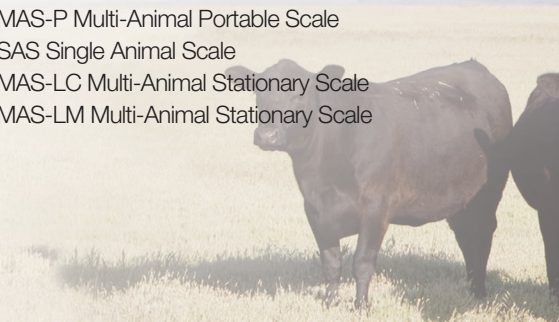
Warranty: Two-year limited warranty

Approvals: NTEP CC 01-088



Scale Compatibility:

MAS-M Multi-Animal Mobile Scale
MAS-P Multi-Animal Portable Scale
SAS Single Animal Scale
MAS-LC Multi-Animal Stationary Scale
MAS-LM Multi-Animal Stationary Scale





920i® Indicator

The 920i digital weight indicator features a large backlit LCD graphical display with easy navigation and a straightforward user interface. The 920i includes a NEMA Type 4X/IP66 stainless steel enclosure to protect instrumentation from the environment. The 920i can be equipped with Group Weighing or single animal Rate of Gain software. With its USB port, animal weight results can be transferred to a flash drive and uploaded to a PC database or spreadsheet.

Features

- Printer port for Legal for Trade ticket printing (printer sold separately)
- USB port to transfer weight data to a flash drive
- NEMA Type 4X/IP66 stainless steel enclosure

Multi-Animal Weighing

- Multiple animal Group Weighing software
- Reports batch, animal lot, total weight, and average head count and shrink

Single Animal Weighing

- Single animal Rate of Gain software
- Daily rate of gain and average gain with two to three captured weights for up to 500 animals

Specifications

Display: (W x H) 4.6 x 3.4 in LCD display

Warranty: Two-year limited warranty

Approvals: NTEP CC 01-088



Scale Compatibility:

MAS-LC Multi-Animal Stationary Scale
SAS Single Animal Scale
MAS-LM Multi-Animal Stationary Scale



482-AG Indicator

The 482-AG livestock digital weight indicator includes Group Weighing software. Time and date, group number, head count, weight, average weight, as well as total group shrink, group weight, total head count and total group average can be printed from the 482-AG for transaction records.

Features

- Printer port for Legal for Trade ticket printing (printer sold separately)
- Multiple animal Group Weighing software
- Rechargeable battery
- Print time and date, group number, head count, weight, average weight, total group shrink, group weight, total head count and total group average when paired with a printer

Specifications

Display: 0.8 in LCD backlit display

Warranty: Two-year limited warranty

Approvals: NTEP CC 12-123



Scale Compatibility:

MAS-LC Multi-Animal Stationary Scale
MAS-LM Multi-Animal Stationary Scale



482 Legend™ Series Indicator

The 482 Legend Series digital weight indicator is powered by either standard AC power or a long lasting, rechargeable battery. The 482's printer port allows Legal for Trade ticket printing for single animal weights. The large backlit LCD display can be read even in direct sunlight.

Features

- Rechargeable battery
- Standard RS-232 port for Legal for Trade ticket printing (printer sold separately)

Specifications

Display: 0.8 in LCD backlit display

Warranty: Two-year limited warranty

Approvals: NTEP CC 12-123



Scale Compatibility:

Farm Bar™ Universal Scale (Non-NTEP)
SAS Single Animal Scale

Livestock Scale Printers



EPSON TM-U295 Ticket Printer

For livestock scales that do not include an onboard ticket printer, Rice Lake offers a full line of printers ideally suited for livestock weighing.

The EPSON® TM-U295 ticket printer is a perfect fit for most livestock weighing applications that require ticket printing.



MOBILE/PORTABLE LIVESTOCK SCALES

MULTI-ANIMAL WEIGHING

MAS-P Portable

The MAS-P provides Legal for Trade weights in multiple locations and where the scale may be off level by as much as 6 percent.



MAS-M Mobile

The MAS-M is a dependable Legal for Trade mobile livestock scale that does not require recalibration after relocating the scale.



No Recalibration Needed After Relocation!

The MAS-P and MAS-M multi-animal scales feature an onboard 920i instrumentation weigh center. The 920i weigh center includes an inclinometer board, which eliminates the need to recalibrate the scale after relocation (excluding recalibration as a part of standard annual scale maintenance). This unique feature makes frequent Legal for Trade multi-site scale use easy and efficient.

STATIONARY LIVESTOCK SCALES

MULTI-ANIMAL WEIGHING

MAS-LC Load Cell Based

The MAS-LC Legal for Trade system combines accuracy with heavy-duty construction for consistently reliable weighments.



MAS-LM Mechanical Based

The Legal for Trade MAS-LM is an extreme-duty mechanical pipe lever scale ruggedly built with the assurance of reliable animal weighments.



SINGLE ANIMAL WEIGHING

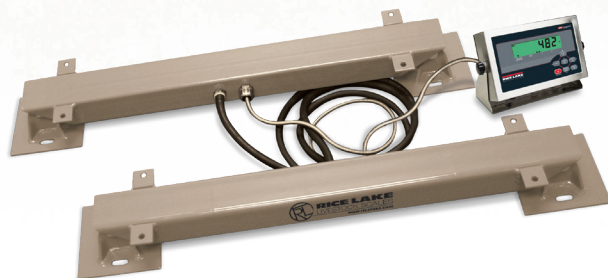
SAS Single Animal

The Legal for Trade SAS stationary single animal scale is built tough and ensures reliable animal weighing with a load containment capacity up to 5,000 pounds.



FARM BARS UNIVERSAL SCALE

Farm Bar load weighing systems are complete universal scales for the farm or ranch. With accurate load cells and standard to specialized platforms, Farm Bar systems are available with or without an indicator and can be designed and constructed to meet your needs.



With the proven reputation of turning investment into profit, Rice Lake livestock scales and instrumentation packages are ruggedly designed to keep safety, quality and performance in the forefront. Visit www.ricelake.com/livestockscales to learn more about Rice Lake's livestock solutions.

Your Rice Lake Weighing Systems distributor is:

RICE LAKE
WEIGHING SYSTEMS

230 W. Coleman St. • Rice Lake, WI 54868 • USA
TEL: 715-234-9171 • FAX: 715-234-6967 • www.ricelake.com

An ISO 9001 registered company • Specifications subject to change without notice.
© 2019 Rice Lake Weighing Systems PN 174414 1/19