



Picture is a representation of actual product

#### Approvals



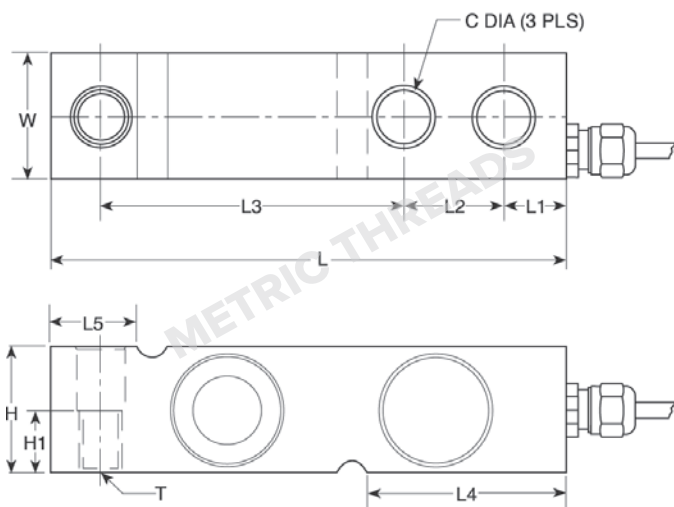
Available  
upon  
request

#### Order Information

Load Rating	Part #	Est. Weight	Price
500 kg	30161	3 lb	Consult
1,000 kg	30162	3 lb	Consult
2,000 kg	30163	3 lb	Consult
5,000 kg	30164	5 lb	Consult

#### Dimensions

Rated Capacity	C	H	H1	L	L1	L2	L3	L4	L5	T	W
kg/mm											
500 to 2,000	13.5	32.0	16.0	130.0	15.8	25.4	76.2	50.5	23.5	M12 × 1.75 Thrd.	32.0
5,000	20.5	48.0	—	171.5	19.0	38.1	95.3	70.0	37.0	—	36.5



#### Interchangeable Products

RICE LAKE WEIGHING SYSTEMS

RLHTO .....page 115

#### Weigh Module Available

RICE LAKE WEIGHING SYSTEMS

RL1700 HE ..... page 29

#### Specifications

##### Full Scale Output:

2.0 mV/V

##### Output Resistance:

350 (± 3) ohm

##### Input Resistance:

380 (± 10) ohm

##### Material/Finish:

Stainless steel

##### Temperature:

Operating:  
0 °F to 150 °F (-18 °C to 65 °C)

##### Seal Type:

Welded-seal, IP68

##### Safe Overload:

150% full scale

##### Safe Sideload:

100% full scale

##### Rated Excitation:

5 to 10 VDC (15 V maximum)

##### Combined Error:

0.02% full scale

##### Insulation Resistance:

2,000 megohm

##### Deflection at Capacity:

0.015 in

##### Cable Length:

5 m

##### Cable Diameter:

5.5 mm  
Polyurethane jacket

##### Cable Color Code:

Blue +Excitation  
Black -Excitation  
White +Signal  
Red -Signal  
Green +Sense  
Gray -Sense

##### Warranty:

One-year limited

##### Approvals:

OIML  
cFMus  
Ex (Available upon request)