

# BenchPro™ BP-S Series

SHIPPING DIGITAL BENCH SCALE



**RICE LAKE**<sup>®</sup>  
WEIGHING SYSTEMS

800-472-6703

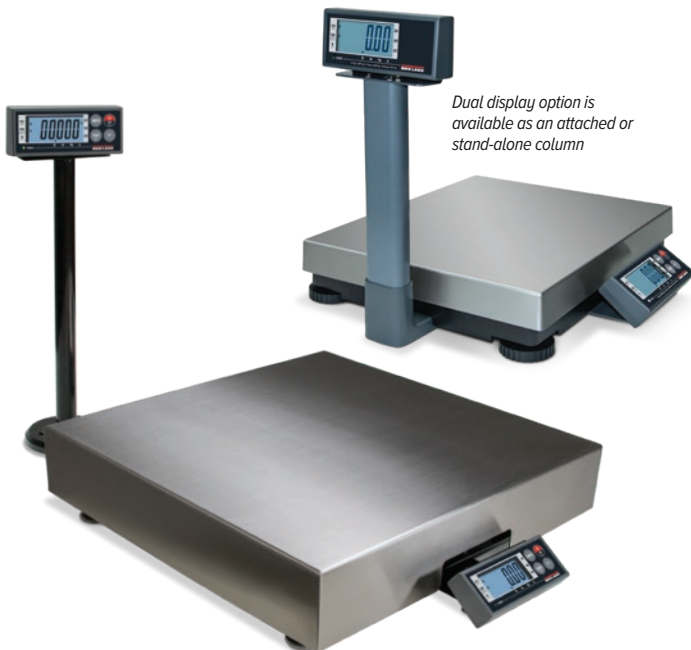
[www.ricelake.com](http://www.ricelake.com)

# Efficiently Weigh Parcels and Packages with the BenchPro BP-S™ Series

The BenchPro™ BP-S shipping digital scale captures package weights, then seamlessly transmits the data to your warehouse management or shipping manifest software. Knowing the weight of your incoming and outgoing product will help you make logistics decisions that save you time and money.

## Durable and Customizable

Available in several standard sizes with capacities up to 300 pounds (150 kilograms), the BP-S is metrologically approved by NTEP and Measurement Canada to be used as a Legal for Trade scale ensuring accurate, repeatable weighments. Choose from the standard stainless steel smooth top, ball top shroud, or roller conveyor model to ease operator handling and warehouse needs. Multiple display mounting arrangements mean the display is easily visible, yet out of harm's way while in use.



*Dual display option is available as an attached or stand-alone column*

*Model BP-S 24 × 24 with optional tabletop display post and second display*

## Install with Ease

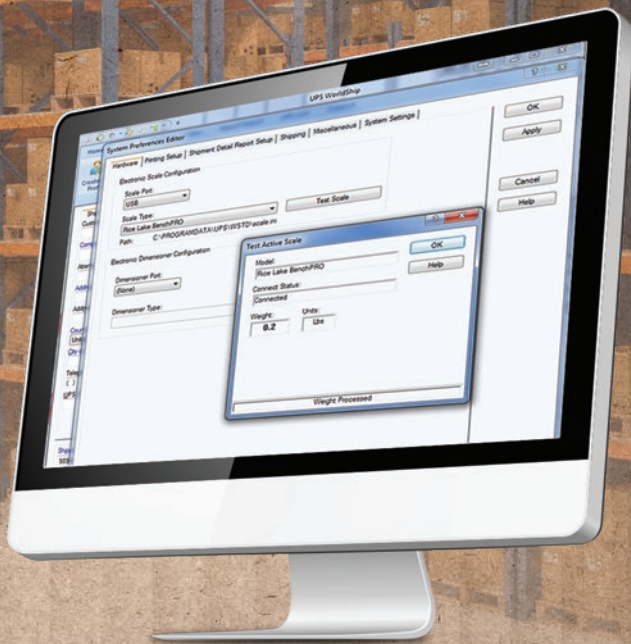
With clearly marked buttons and straightforward setup, operating the BP-S is simple. The scale comes standard with an in-line power supply and the 12 × 14 model can also be powered with four AA alkaline batteries. Equipped with a configurable backlight and auto-shutdown feature, this product can be used in dim areas of the warehouse where power is not easily accessible.

## Double the Display

The BP-S can be equipped with an additional post mount or tabletop display, allowing multiple people to view weight at the same time. A scratch-resistant, tempered glass display will withstand the impact of accidentally dropped packages. This makes it ideal for a fast-paced environment where time is money.



*Model BP-S (18 × 18 or larger)*



## Software Made for Shipping

The BP-S can be connected via a USB-HID connection to shipping programs like UPS WorldShip® and FedEx Ship Manager®. Other third-party software can access weight data through the RS-232 port.



Model BP-SB with ball top shroud



Model BP-SR with roller conveyor

# BenchPro™ BP-S Series

SHIPPING DIGITAL BENCH SCALE



Pair the BenchPro BP-S with painted steel cover with Rice Lake's iDimension® dimensioner to capture accurate cubic dimensions of freight. Dimensioners ensure freight code compliance while deterring revenue loss that can result from miscalculated dimensions. The BenchPro BP-S with painted steel cover is specifically designed to complement the iDimension dimensioner, creating a holistic shipping and logistics operation.



BenchPro BP-S paired with the iDimension Plus

## SPECIFICATIONS

<b>DYNAMIC RESPONSE:</b>	Response time for stable weight: 0 - 1000d, 1000 ms, maximum mean average 1000d+, 1500 ms, maximum mean average
<b>OVERLOAD PROTECTION:</b>	Corner and center overload protection
<b>IN-LINE POWER SUPPLY</b>	Input: 100-240 VAC, +10% -15%, 3-wire w/ground Standard terminated with USA 3-prong plug Output: 12V at .1 Amps DC minimum Frequency: 50/60 Hz +/-3 Hz, standard Approvals: UL, CE, EN, CUL
<b>BATTERY POWER (BP-S 12 x 14 SCALE ONLY):</b>	<b>Battery Type:</b> Four AA alkaline batteries, 6 V, with low battery indication at 4.3 volts (not included) <b>Battery Life:</b> Non-backlight and software control for sleep mode. 50-250 hrs depending on back-light and auto-shutdown settings
<b>DISPLAY:</b>	Minimum key press life of 500,000 cycles, ABS plastic housing with 6 annunciators to indicate Zero, Gross/Brutto, Net, W1/W2/W3 multi-range
<b>DIMENSIONS:</b>	(L x W x D) 5.25 in x 2.21 in x 1.09 in (133.4 mm x 56.1 mm x 27.76 mm)
<b>USB HID:</b>	USB 2.0 full speed; Vendor ID: 1C19; Product ID: 0002
<b>RS-232 CABLE (INCLUDED):</b>	10 ft DB 9-pin male-to-female connection, straight pass through and null modem
<b>USB CABLE (INCLUDED):</b>	46 in (1168.4 mm) A/B type USB cable
<b>APPROVALS:</b>	NTEP COC# 17-002 Canada Weights and Measures: AM - 6050
<b>WARRANTY:</b>	Two-year limited

## APPROVALS



Measurement  
Canada  
Approved