

iDimension[®]

Single and Dual Arm Stands

The Single and Dual arm stands are designed to install dimensioning systems (purchased separately) directly over a conveyor or work table. The heads can be mounted to the universal mount on the horizontal arms of the stands. The heads should be mounted at 79" (2000 mm) or 60.2" (1529 mm) above the platform base (e.g. conveyor or tabletop). Consult with the factory on the mounting height to ensure best performance.

Both stands are adjustable vertically and horizontally to work in conjunction with most conveyor or tabletop applications.

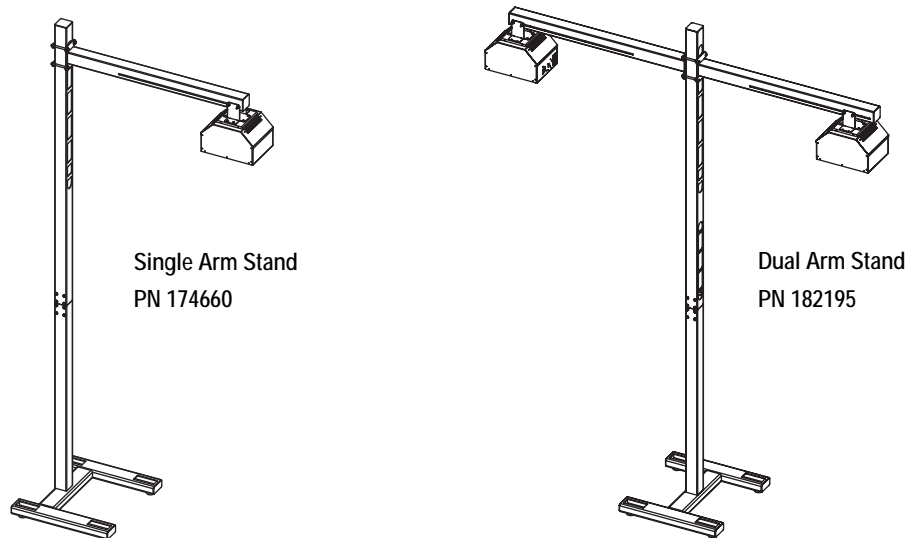


Figure 1. Single and Dual Arm Stands (Heads are not Included with Stands)

Assembly

The following instructions are for the assembly of both the Single and Dual Arm Stands.

1. Unpack and get familiar with the contents of crate. Reference the replacement parts list to confirm that all of the parts are included in the crate.
2. Lay the stand base (1) on the floor and screw in the four adjustable stand feet (3) into the bottom of the stand base. Tip the stand back up.



Note Do not screw in the stand feet if the stand is being bolted to the floor.

3. Level stand base by adjusting the four feet (3) with a flathead screwdriver.
4. Secure the two joint plates (7) to the inside of the upper portion of the stand base tube using four 1/4-20 x 3/4" bolts (8) and four 1/4" washers (9) for each joint plate.

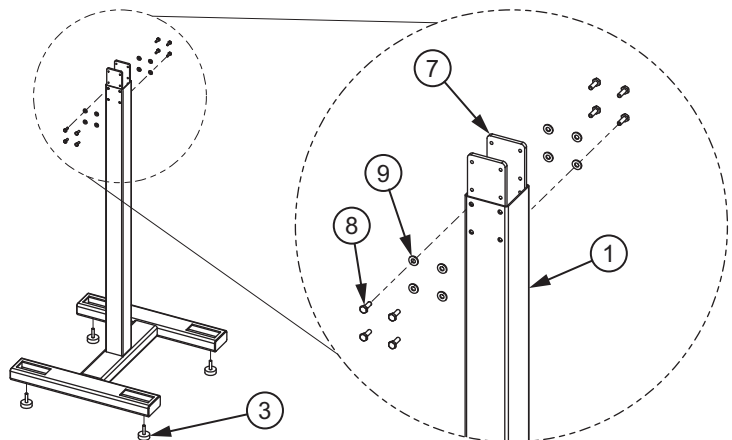


Figure 2. Initial Base Assembly (Dual Arm Stand Displayed)

- Slide the upright tube (2) over the joint plates, such that the bolt holes line up. The upright tube should be resting on the stand base tube (1). Secure the upright tube with eight 1/4-20 x 3/4" bolts (8) and eight 1/4" washers (9).

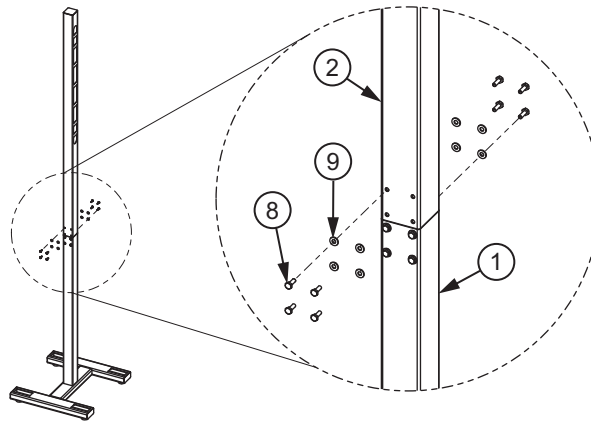


Figure 3. Upright Tube Attachment (Dual Arm Stand Displayed)

- Place the horizontal arm(s) (4) on a flat surface with the open side face up. Attach the head mount(s) (10) using four 1/4-20 x 1" carriage bolts (11), four 1/4" washers (9) and four nuts (12).

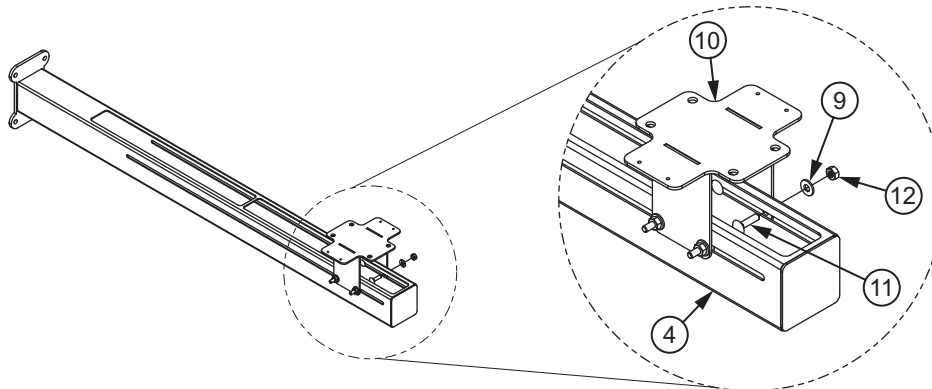


Figure 4. Head Mount Attachment to Horizontal Arms



Note *Attaching the horizontal arm(s) is recommended to be done by two people.*

7. Lay the stand down and attach the horizontal arm (4) to the upright tube with four 3/8-16 x 4" bolts (5), four 3/8" washers (6) and two threaded plates (13) or the second horizontal arm (13).

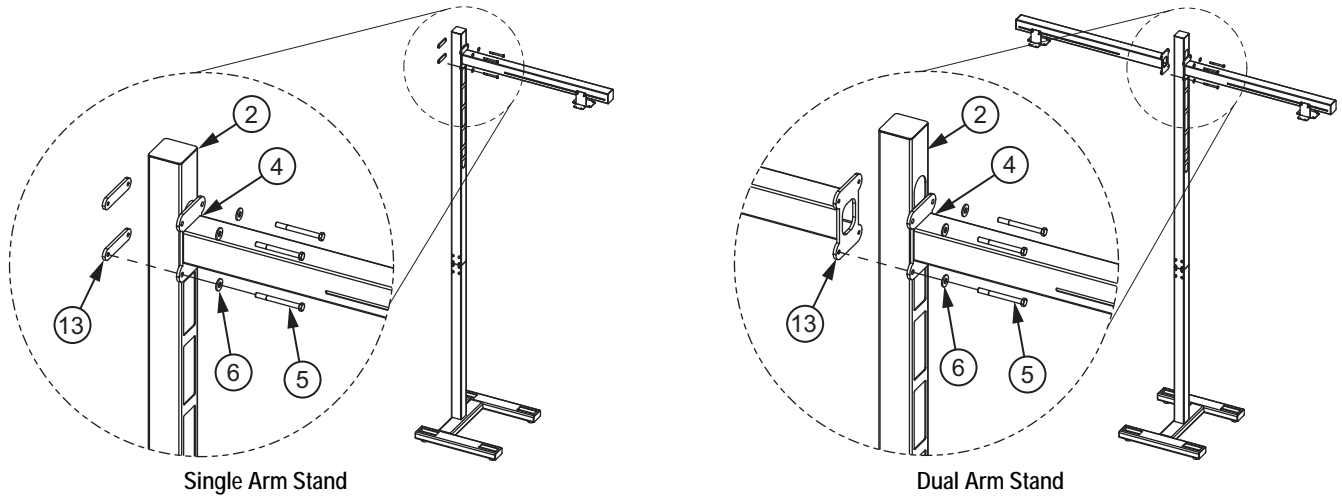


Figure 5. Horizontal Arm(s) Attachment

8. Tilt the stand back up and place in its location.
9. Attach the dimensioning head to camera mount weldment (10). The small holes on the mount are threaded and are to be used with the iDimension 100XL / QubeVu Dimstation XL and the large holes are not threaded and are to be used with the iDimension 300 / QubeVu Industrial.

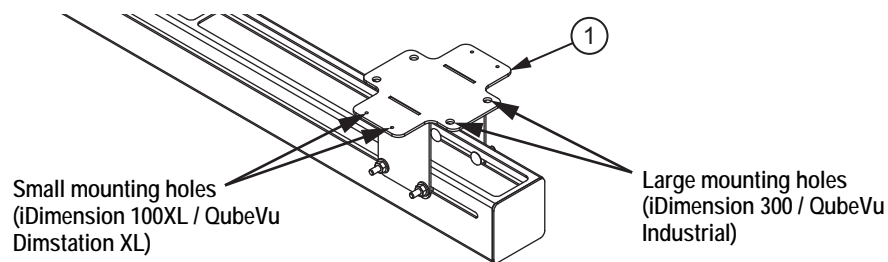


Figure 6. Camera Mount Weldment Mounting Holes

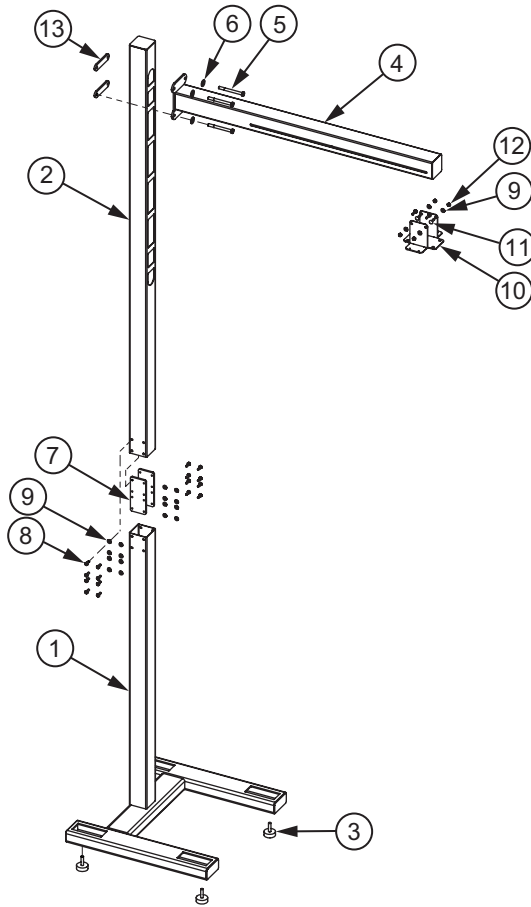


Make any vertical adjustments to horizontal arm(s) and any horizontal adjustments to head mount(s) once stand is in position.

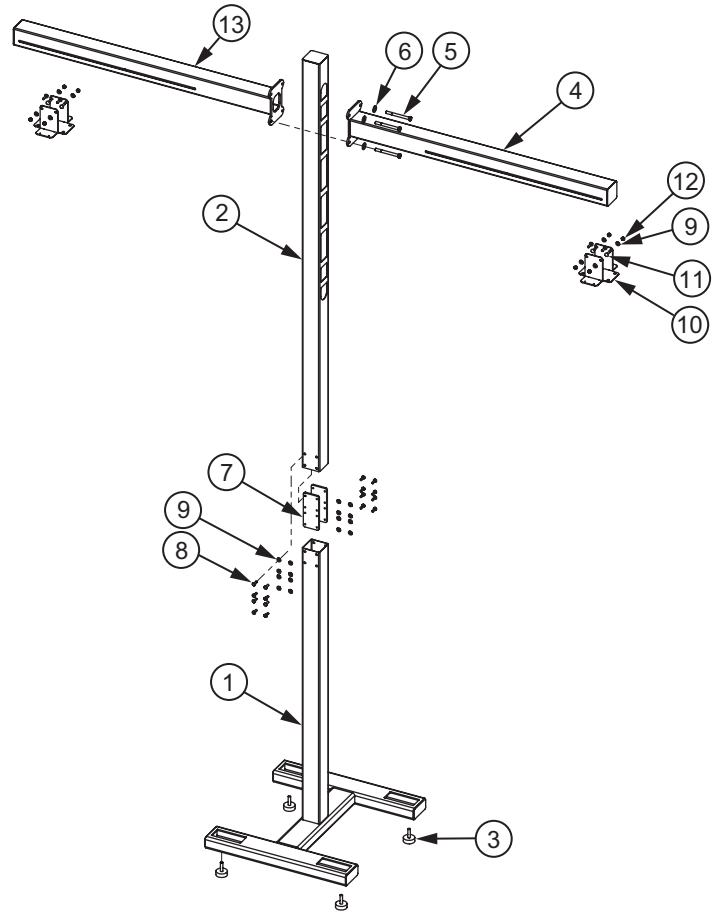
Measure the height of the platform base (e.g. conveyor or tabletop) and add 79" (2000 mm) or 60.2" (1529 mm) to calculate the height of the horizontal arm(s), based on the head height.

Confirm that the stand base is still level and make foot adjustments if needed.

Replacement Parts



Single Arm Stand



Dual Arm Stand

Item No.	Part No.	Description	Qty
1	182269	100XL Stand Base WLDT	1
2	182219	Upright Tube WLDT	1
3	181667	Leveling Foot, 3/8-16	4
4	182188	Horizontal Arm	1
5	127003	3/8-16 x 4, Hex Bolt	4
6	21938	3/8 Type A, Plain Washer	4
7	182193	Joint Plate	2
8	14963	1/4-20 x 3/4, Hex Head Cap Screw	16
9	15145	1/4 Type A, Plain Washer	20
10	182150	Camera Mount WLDT	1
11	132917	1/4-20 x 1, Carriage Bolt	4
12	14641	1/4-20, Steel Hex Nut	4
13	182270	Threaded Plate	2

Table 1. Single Arm Stand (PN 174660)

Item No.	Part No.	Description	Qty
1	182186	100XL Stand Base WLDT	1
2	182219	Upright Tube WLDT	1
3	181667	Leveling Foot, 3/8-16	4
4	182188	Horizontal Arm	1
5	127003	3/8-16 x 4, Hex Bolt	4
6	21938	3/8 Type A, Plain Washer	4
7	182193	Joint Plate	2
8	14963	1/4-20 x 3/4, Hex Head Cap Screw	16
9	15145	1/4 Type A, Plain Washer	24
10	182150	Camera Mount WLDT	2
11	132917	1/4-20 x 1, Carriage Bolt	8
12	14641	1/4-20, Steel Hex Nut	8
13	182189	Horizontal Arm, Threaded	1

Table 2. Dual Arm Stand (PN 182195)

Display Mount Kit Option (PN 184262)

1. Secure the mount plate (1) to the upright tube of stand using two clamp mounts (2), four 1/4-20 x 3.5" cap screws (3), and four lock washers (4). Once positioned at intended height torque to 8 ft/lb.
2. Attach a Ram Mount base (6) to the studs of the mount plate (1) using four 1/4-20 nuts (5) and four lock washers (4).
3. Attach second Ram Mount base (6) to the USB display (not included) using four M4 screws (8) and four flat washers (9).
4. Connect the Ram Mount bases to each other using the Ram Mount arm (7). Position display at intended angle and secure in place by tightening the hand knob on the Ram Mount arm.

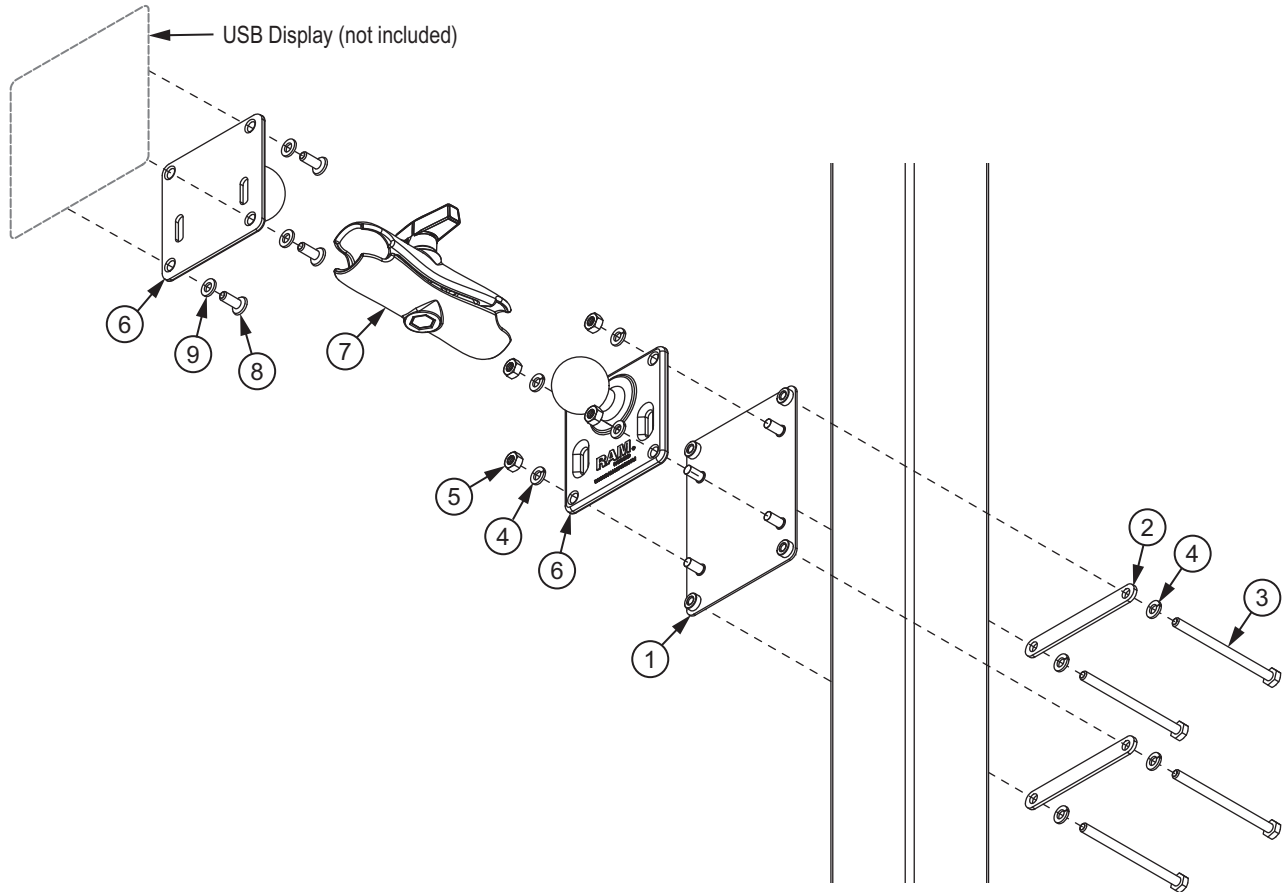


Figure 7. Display Mount Attachment

Item No.	Part No.	Description	Qty
1	184307	Mount Plate	1
2	184325	Clamp Plate	2
3	126933	1/4-20 x 3.5" Hex Head Cap Screw	4
4	15147	1/4" Lock Washer	8
5	14641	1/4-20 Hex Nut	4
6	175508	Ram Mount Base	2
7	175509	Ram Mount Arm	1
8	166216	M4 x 12mm Phillips Pan Head Screw	4
9	179971	M4 x 9mm Flat Washer	4

Table 3. Display Mount Kit



© Rice Lake Weighing Systems Specifications subject to change without notice.
Rice Lake Weighing Systems is an ISO 9001 registered company.

230 W. Coleman St. • Rice Lake, WI 54868 • USA
U.S. 800-472-6703 • Canada/Mexico 800-321-6703 • International 715-234-9171 • Europe +31 (0)26 472 1319