



Picture is a representation of actual product.

Approvals

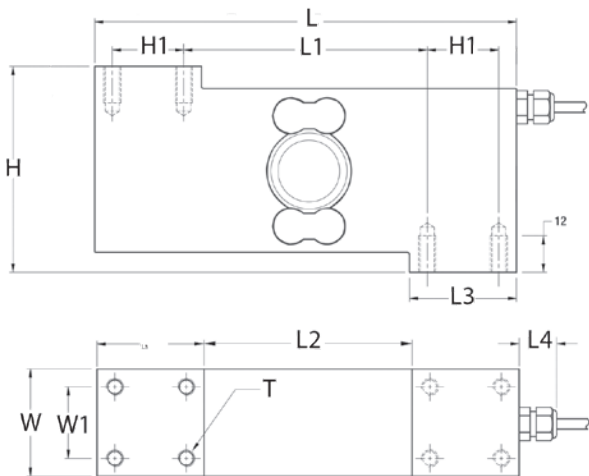


Order Information

| Load Rating | Part # | Est. Weight | Price |
|-------------|--------|-------------|---------|
| 100 kg | 161719 | 6 lb | Consult |
| 250 kg | 161720 | 6 lb | Consult |
| 500 kg | 161721 | 6 lb | Consult |

Dimensions

| Rated Capacity | H | H1 | L | L1 | L2 | L3 | L4 | W | W1 | T |
|----------------|------|------|------|------|------|------|------|------|------|----|
| kg/in | | | | | | | | | | |
| 100 to 500 | 2.88 | 1.00 | 5.91 | 3.41 | 2.92 | 1.50 | 0.63 | 1.50 | 1.00 | M8 |



Interchangeable Products

VPG® TEDEA-HUNTLEIGH®
1510..... page 324

Specifications

- Full Scale Output:**
2 mV/V ±5%
- Output Resistance:**
350 (± 10) ohm
- Input Resistance:**
380 (± 20) ohm
- Material/Finish:**
Stainless steel construction with electro-polished finish
- Temperature:**
Operating:
0 °F to 150 °F (-18 °C to 65 °C)
- Seal Type:**
Hermetically sealed, IP69K
- Safe Overload:**
150% full scale
- Rated Excitation:**
5 to 15 VDC
- Insulation Resistance:**
5,000 megohm
- Cable Length:**
3 m
- Cable Color Code:**
Green +Excitation
Black -Excitation
White +Signal
Red -Signal
Blue +Sense
Brown -Sense
Yellow Shield
- Max Platform Size:**
600 × 600 mm
- Warranty:**
One-year limited
- Approvals:**
OIML

FLINTEC®